



SunLong Biotech Co.,LTD  
Tel: 0086-571- 56623320 Fax:0086-571- 56623318  
E-mail:sales@sunlongbiotech.com  
www.sunlongbiotech.com

## **[KD-Validated] Anti-MAP2K1 Rabbit Monoclonal Antibody**

Cat No.: KD-10569

### **Aliases:**

MAP2K1; Mitogen-Activated Protein Kinase Kinase 1; MEK1; Dual Specificity Mitogen-Activated Protein Kinase Kinase 1; MAPK/ERK Kinase 1; MAPKK1; PRKMK1; MKK1; ERK Activator Kinase 1; MAP Kinase Kinase 1; EC 2.7.12.2; MAPKK 1; MEK 1; Protein Kinase, Mitogen-Activated, Kinase 1 (MAP Kinase Kinase 1); CFC3; MEL

### **Background:**

UniProt Entry: [Q02750](#);NCBI Gene Entry: [5604](#)

### **Application Information**

Molecular Weight: Predicted, 43 kDa, observed, 45 kDa Clonality: Rabbit monoclonal antibody Clone ID: 23GB2940 Species Reactivity: Human, Mouse, Rat Applications Tested: Western Blotting (WB), Flow Cytometry (FCM), Immunocytochemistry (IC)

### **Immunogen**

A synthesized peptide derived from human MEK1

### **Isotype**

Rabbit IgG

### **Storage Buffer**

Supplied in PBS (pH 7.4) containing 50% glycerol, and 0.02% sodium azide.

### Storage

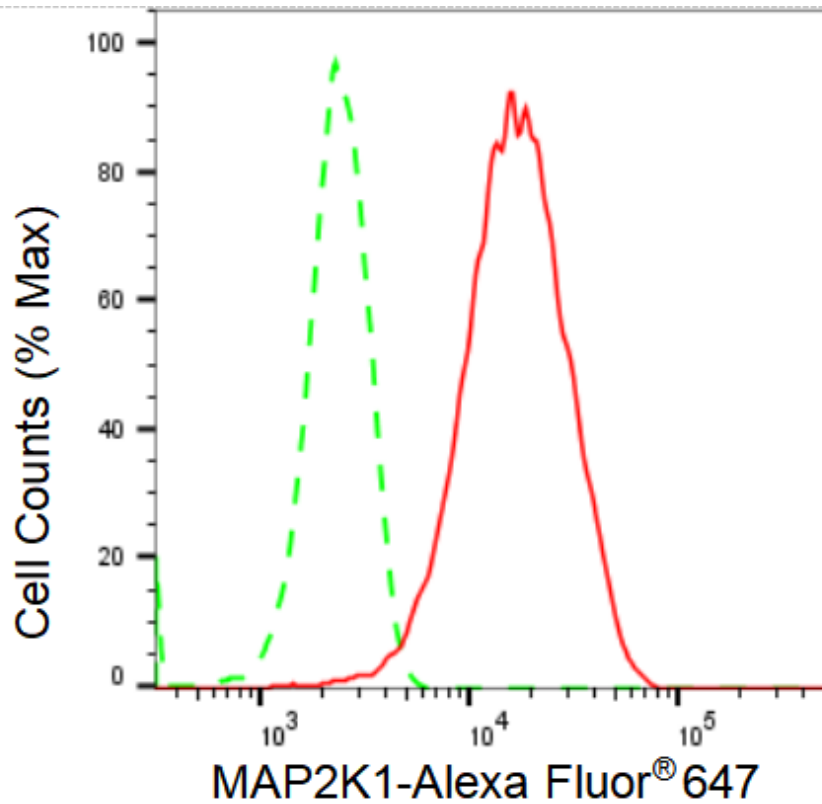
Store at -20 °C for one year.

### Recommended Dilutions

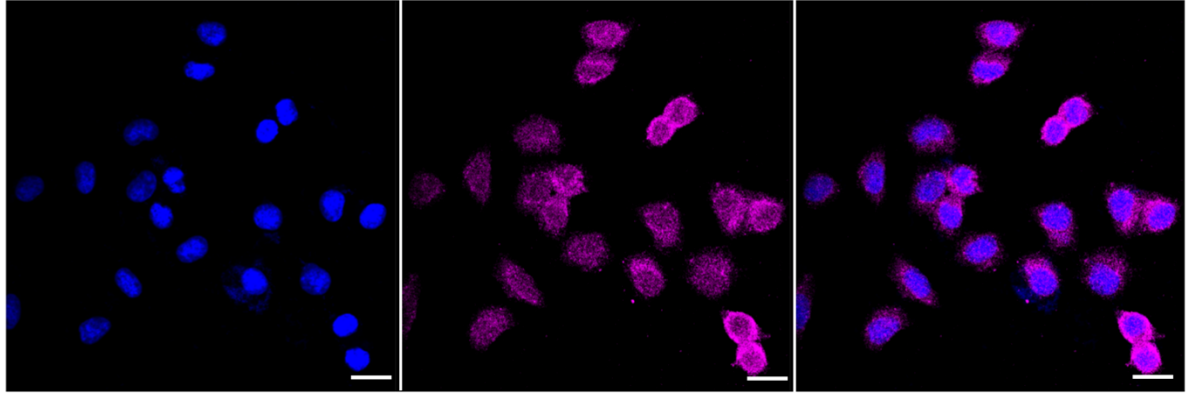
Western Blotting (WB): 1:1,000-1:5,000 Flow Cytometry (FCM): 1:2,000  
Immunocytochemistry (IC): 1:1,000

### Protocols

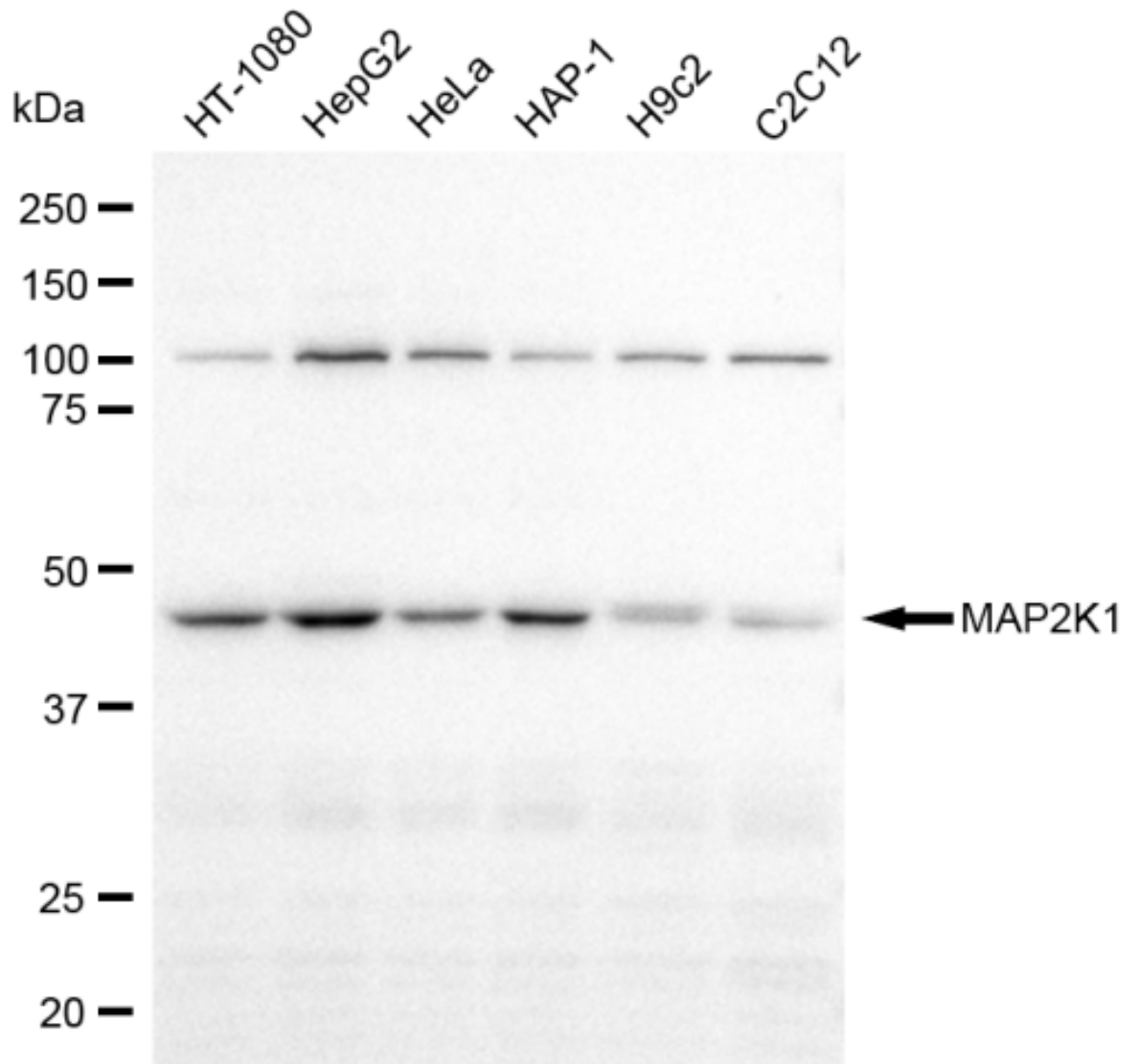
For general and specific antibody protocols please visit our website. Read all instructions before using this product.



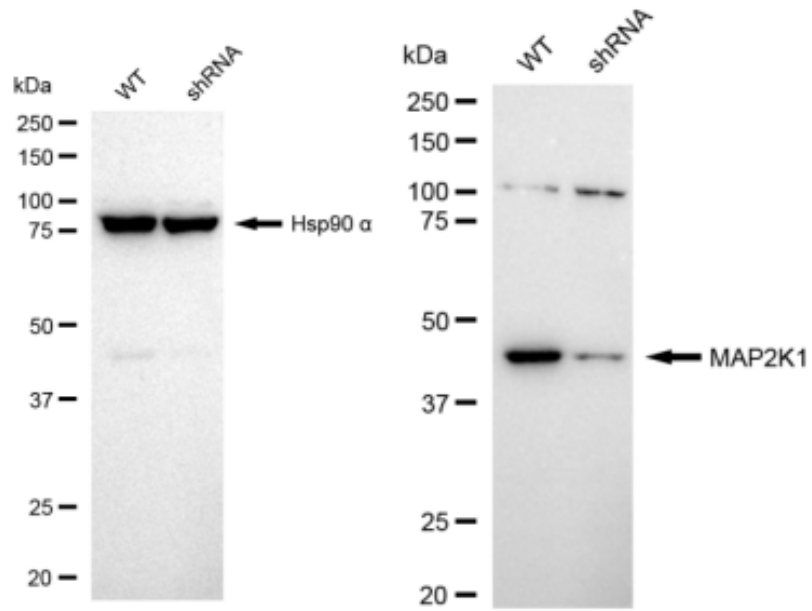
Flow cytometric analysis of MAP2K1 expression in HepG2 cells using MAP2K1 antibody 1:2,000. Green, isotype control; red, MAP2K1.



Immunocytochemical staining of HepG2 cells with MAP2K1 antibody 1:1,000. Nuclei were stained blue with DAPI; MAP2K1 was stained magenta with Alexa Fluor® 647. Images were taken using Leica stellaris 5. Protein abundance based on laser Intensity and smart gain: Medium. Scale bar: 20  $\mu$ m.



Western blotting analysis using anti-MAP2K1 antibody 1:5,000 and HRP-conjugated goat anti-rabbit secondary antibody 1:20,000 respectively. Image was developed using FeQ™ ECL Substrate Kit .



Western blotting analysis using anti-MAP2K1 antibody 1:5,000 and HRP-conjugated goat anti-rabbit secondary antibody 1:20,000 respectively. Image was developed using FeQ™ ECL Substrate Kit .