



SunLong Biotech Co.,LTD
Tel: 0086-571- 56623320 Fax:0086-571- 56623318
E-mail:sales@sunlongbiotech.com
www.sunlongbiotech.com

[KD-Validated] Anti-MAP2K1 Rabbit Monoclonal Antibody

Cat No.: KD-10568

Aliases:

MAP2K1; Mitogen-Activated Protein Kinase Kinase 1; MEK1; Dual Specificity Mitogen-Activated Protein Kinase Kinase 1; MAPK/ERK Kinase 1; MAPKK1; PRKMK1; MKK1; ERK Activator Kinase 1; MAP Kinase Kinase 1; EC 2.7.12.2; MAPKK 1; MEK 1; Protein Kinase, Mitogen-Activated, Kinase 1 (MAP Kinase Kinase 1); CFC3; MEL

Background:

UniProt Entry: [Q02750](#);NCBI Gene Entry: [5604](#)

Application Information

Molecular Weight: Predicted, 43 kDa, observed, 45 kDa Clonality: Rabbit monoclonal antibody Clone ID: 23GB2475 Species Reactivity: Human, Mouse, Rat Applications Tested: Western Blotting (WB), Flow Cytometry (FCM), Immunocytochemistry (IC)

Immunogen

A synthesized peptide derived from human MEK1

Isotype

Rabbit IgG

Storage Buffer

Supplied in PBS (pH 7.4) containing 50% glycerol, and 0.02% sodium azide.

Storage

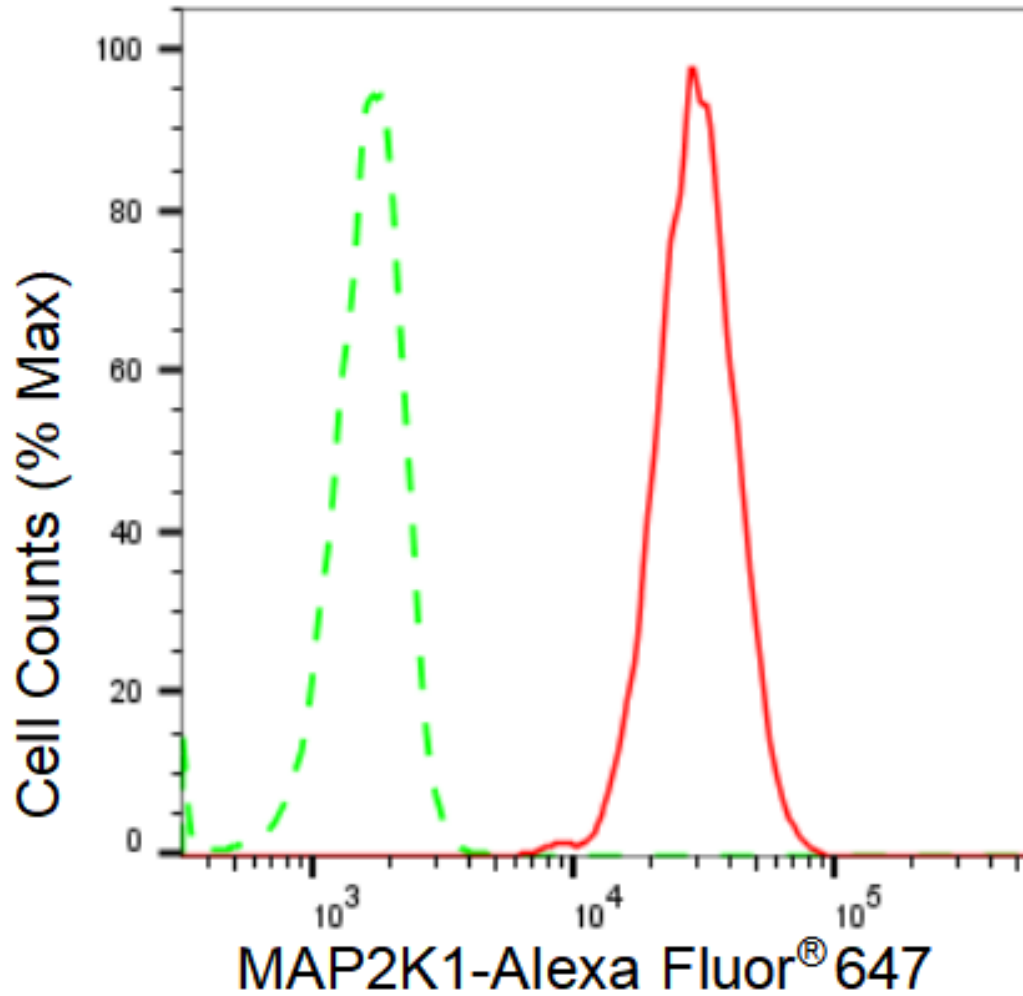
Store at -20 °C for one year.

Recommended Dilutions

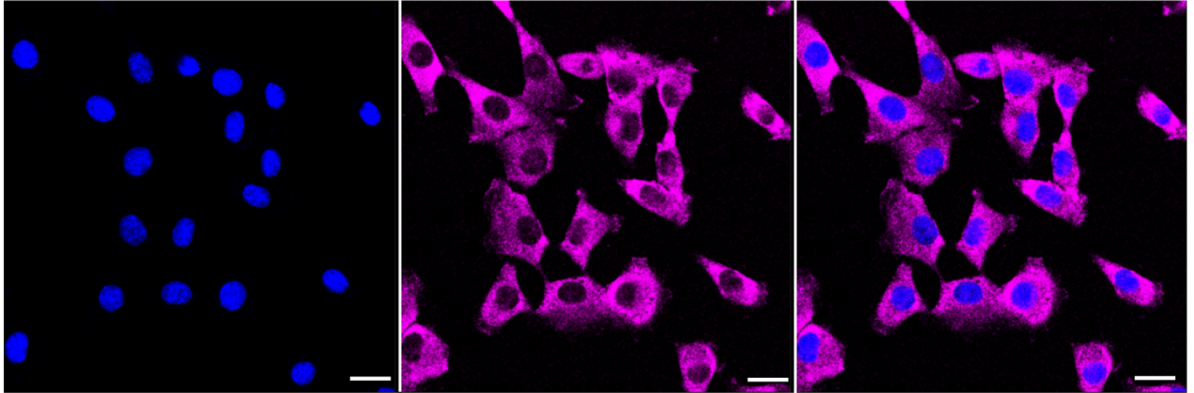
Western Blotting (WB): 1:1,000-1:5,000 Flow Cytometry (FCM): 1:2,000
Immunocytochemistry (IC): 1:1,000

Protocols

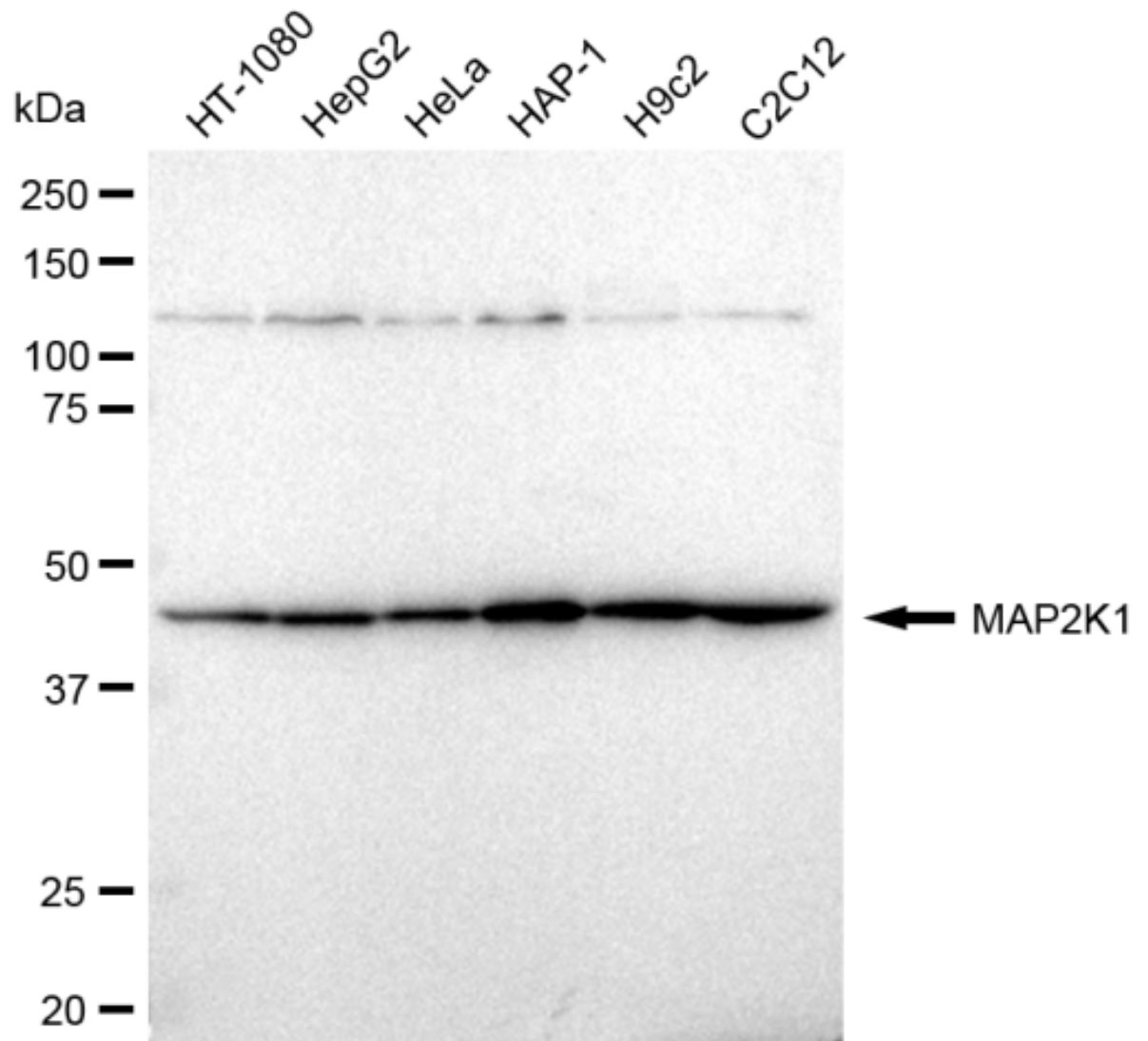
For general and specific antibody protocols please visit our website. Read all instructions before using this product.



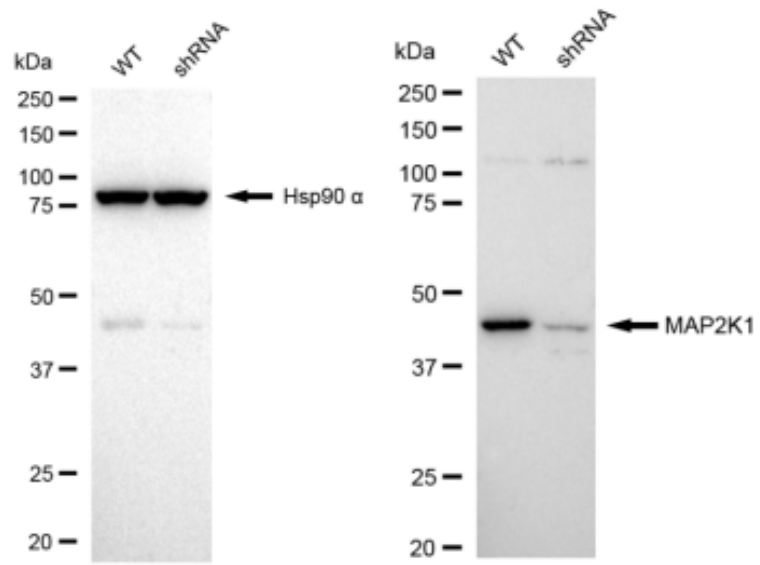
Flow cytometric analysis of MAP2K1 expression in C2C12 cells using MAP2K1 antibody 1:2,000. Green, isotype control; red, MAP2K1.



Immunocytochemical staining of C2C12 cells with MAP2K1 antibody 1:1,000. Nuclei were stained blue with DAPI; MAP2K1 was stained magenta with Alexa Fluor® 647. Images were taken using Leica stellaris 5. Protein abundance based on laser Intensity and smart gain: Medium. Scale bar: 20 μ m.



Western blotting analysis using anti-MAP2K1 antibody 1:5,000 and HRP-conjugated goat anti-rabbit secondary antibody 1:20,000 respectively. Image was developed using FeQ™ ECL Substrate Kit .



Western blotting analysis using anti-MAP2K1 antibody 1:5,000 and HRP-conjugated goat anti-rabbit secondary antibody 1:20,000 respectively. Image was developed using FeQ™ ECL Substrate Kit .