



SunLong Biotech Co.,LTD
Tel: 0086-571- 56623320 Fax:0086-571- 56623318
E-mail:sales@sunlongbiotech.com
www.sunlongbiotech.com

[KD-Validated] Anti-MAP1LC3A Rabbit Monoclonal Antibody

Cat No.: KD-10567

Aliases:

MAP1LC3A; Microtubule Associated Protein 1 Light Chain 3 Alpha; MAP1BLC3; MAP1ALC3; ATG8E; LC3A; LC3; Microtubule-Associated Proteins 1A/1B Light Chain 3A; Autophagy-Related Ubiquitin-Like Modifier LC3 A; MAP1 Light Chain 3-Like Protein 1; MAP1A/MAP1B Light Chain 3 A; MAP1A/MAP1B LC3 A; Microtubule-Associated Protein 1 Light Chain 3 Alpha; Microtubule-Associated Proteins 1A/1B Light Chain 3; Autophagy-Related Protein LC3 A; MAP1A/1B Light Chain 3 A

Background:

UniProt Entry: [Q9H492](#);NCBI Gene Entry: [84557](#)

Application Information

Molecular Weight: Predicted, 14 kDa, observed, 14 kDa Clonality: Rabbit monoclonal antibody Clone ID: 23GB1960 Species Reactivity: Human, Mouse, Rat Applications Tested: Western Blotting (WB), Immunocytochemistry (IC)

Immunogen

A synthesized peptide derived from human MAP1LC3A

Isotype

Rabbit IgG

Storage Buffer

Supplied in PBS (pH 7.4) containing 50% glycerol, and 0.02% sodium azide.

Storage

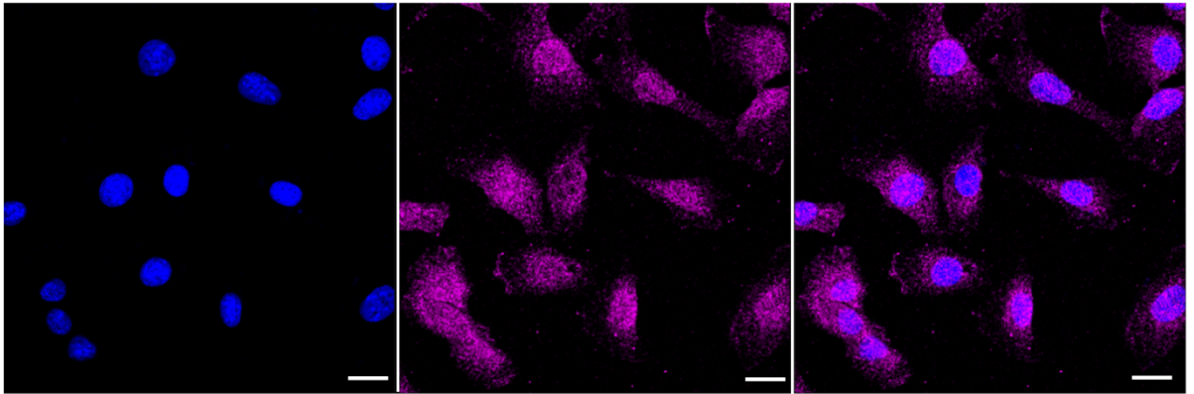
Store at -20 °C for one year.

Recommended Dilutions

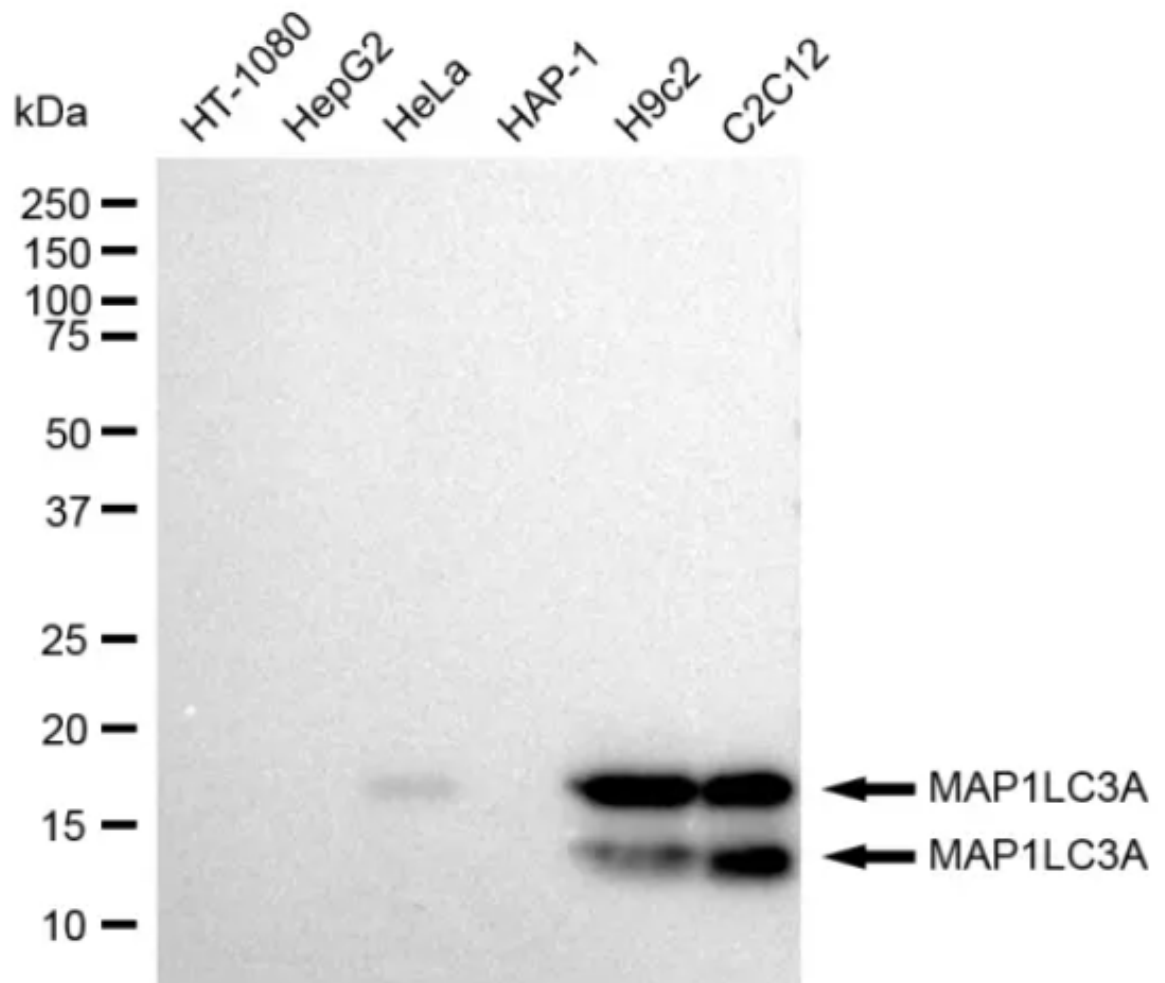
Western Blotting (WB): 1:1,000-1:20,000 Immunocytochemistry (IC): 1:1,000

Protocols

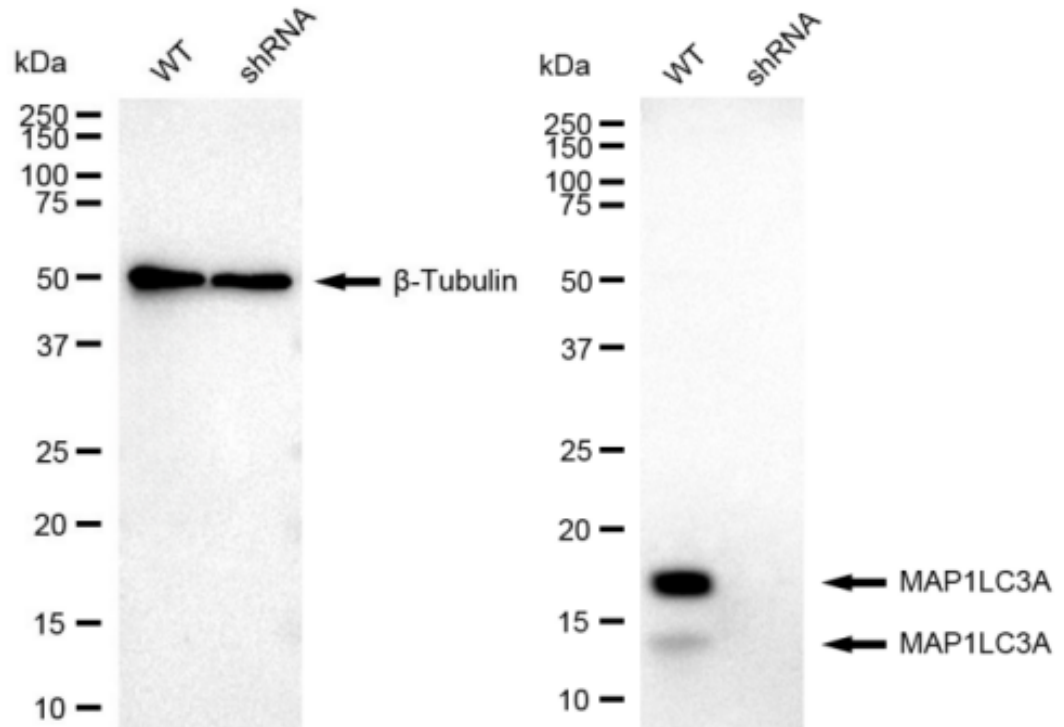
For general and specific antibody protocols please visit our website. Read all instructions before using this product.



Immunocytochemical staining of C2C12 cells with MAP1LC3A antibody 1:1,000. Nuclei were stained blue with DAPI; MAP1LC3A was stained magenta with Alexa Fluor® 647. Images were taken using Leica stellaris 5. Protein abundance based on laser Intensity and smart gain: Medium. Scale bar: 20 µm.



Western blotting analysis using anti-MAP1LC3A antibody 1:20,000 and HRP-conjugated goat anti-rabbit secondary antibody 1:20,000 respectively. Image was developed using FeQ™ ECL Substrate Kit .



Western blotting analysis using anti-MAP1LC3A antibody 1:20,000 and HRP-conjugated goat anti-rabbit secondary antibody 1:20,000 respectively. Image was developed using FeQ™ ECL Substrate Kit .