



SunLong Biotech Co.,LTD  
Tel: 0086-571- 56623320 Fax:0086-571- 56623318  
E-mail:sales@sunlongbiotech.com  
www.sunlongbiotech.com

## **[KD-Validated] Anti-MAP Kinase Activating Death Domain Rabbit Monoclonal Antibody**

Cat No.: KD-10566

### **Aliases:**

MAP Kinase Activating Death Domain; DENN; Differentially Expressed In Normal And Neoplastic Cells; KIAA0358; RAB3GEP; IG20; MAP Kinase-Activating Death Domain Protein; Insuloma-Glucagonoma Protein 20; Insulinoma Glucagonoma Clone 20; Rab3 GDP/GTP Exchange Protein; Rab3 GDP/GTP Exchange Factor; RabGEF; MAP-Kinase Activating Death Domain; NEDDISH; Rab3GEP; DEEAH

### **Background:**

UniProt Entry: [Q8WXG6](#);NCBI Gene Entry: [8567](#)

### **Application Information**

Molecular Weight: Predicted, 183 kDa, observed, 230 kDa Clonality: Rabbit monoclonal antibody Clone ID: 24GB110 Species Reactivity: Human, Mouse, Rat Applications Tested: Western Blotting (WB), Flow Cytometry (FCM), Immunocytochemistry (IC)

### **Immunogen**

A synthesized peptide derived from human DENN

### **Isotype**

Rabbit IgG

### **Storage Buffer**

Supplied in PBS (pH 7.4) containing 50% glycerol, and 0.02% sodium azide.

#### Storage

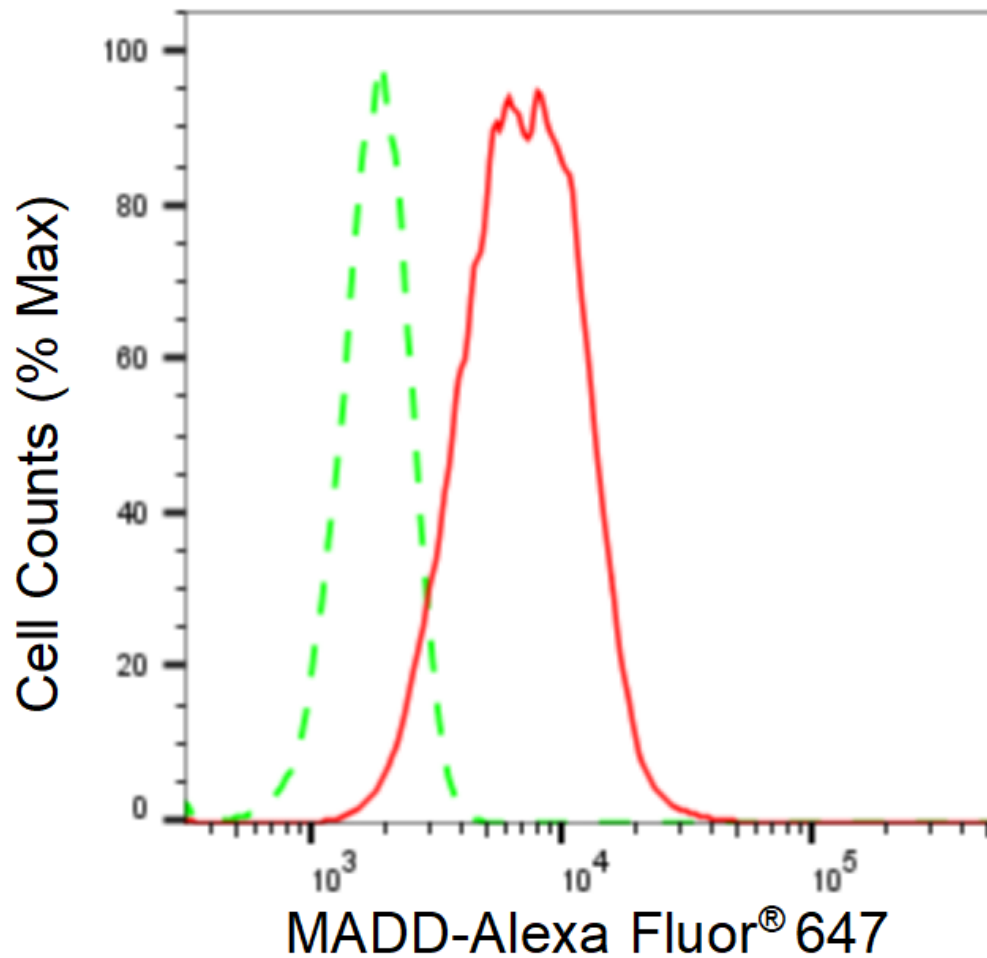
Store at -20 °C for one year.

#### Recommended Dilutions

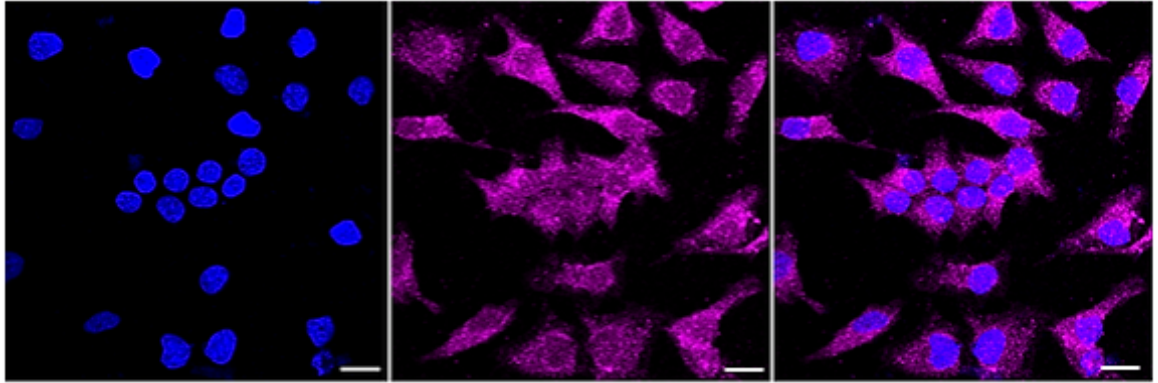
Western Blotting (WB): 1:1,000-1:5,000 Flow Cytometry (FCM): 1:2,000  
Immunocytochemistry (IC): 1:1,000

#### Protocols

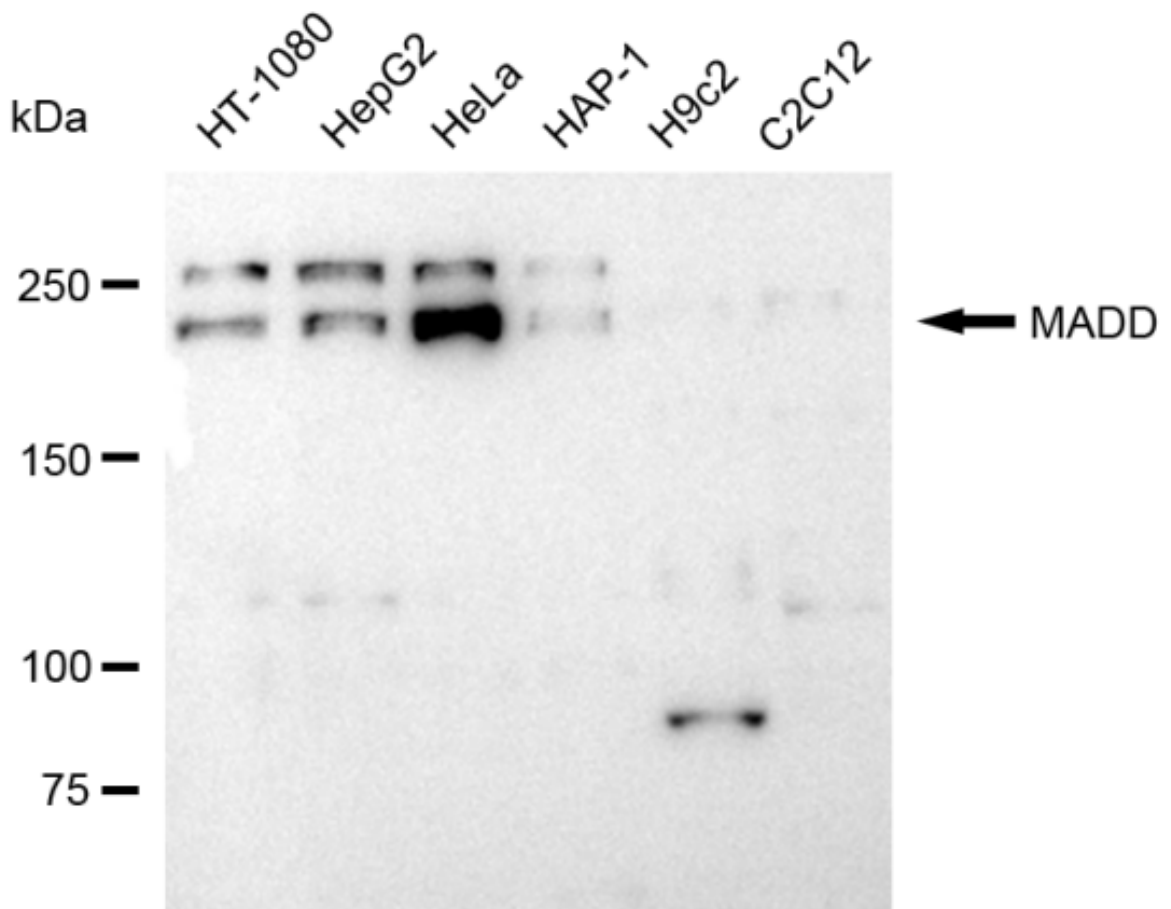
For general and specific antibody protocols please visit our website. Read all instructions before using this product.



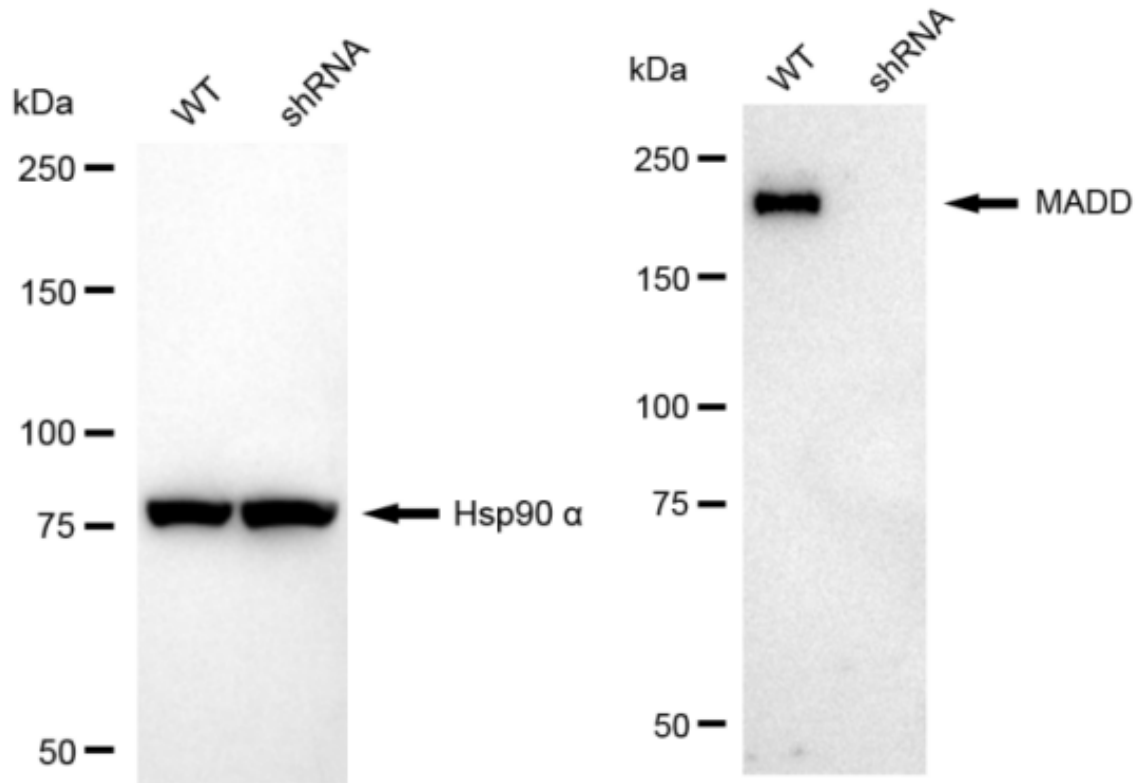
Flow cytometric analysis of MADD expression in HeLa cells using MADD antibody 1:2,000. Green, isotype control; red, MADD.



Immunocytochemical staining of HeLa cells with anti-MADD antibody 1:1,000. Nuclei were stained blue with DAPI; MADD was stained magenta with Alexa Fluor® 647. Images were taken using Leica stellaris 5. Protein abundance based on laser Intensity and smart gain: Medium. Scale bar: 20  $\mu$ m.



Western blotting analysis using anti-MADD antibody 1:5,000 and HRP-conjugated goat anti-rabbit secondary antibody 1:20,000 respectively. Image was developed using FeQ™ ECL Substrate Kit .



Western blotting analysis using anti-MADD antibody 1:5,000 and HRP-conjugated goat anti-rabbit secondary antibody 1:20,000 respectively. Image was developed using NaQ™ ECL Substrate Kit .