



SunLong Biotech Co.,LTD
Tel: 0086-571- 56623320 Fax:0086-571- 56623318
E-mail:sales@sunlongbiotech.com
www.sunlongbiotech.com

[KD-Validated] Anti-Mitotic Arrest Deficient 2 Like 2 Rabbit Monoclonal Antibody

Cat No.: KD-10565

Aliases:

MAD2L2; Mitotic Arrest Deficient 2 Like 2; MAD2B; REV7; POLZ2; FANCV; MAD2 (Mitotic Arrest Deficient, Yeast, Homolog)-Like 2; Polymerase (DNA-Directed), Zeta 2, Accessory Subunit; Mitotic Spindle Assembly Checkpoint Protein MAD2B; Mitotic Arrest Deficient 2-Like Protein 2; Mitotic Arrest Deficient Homolog-Like 2; MAD2-Like Protein 2; REV7 Homolog; HREV7; MAD2 Mitotic Arrest Deficient-Like 2

Background:

UniProt Entry: [Q9UI95](#);NCBI Gene Entry: [10459](#)

Application Information

Molecular Weight: Predicted, 24 kDa, observed, 24 kDa Clonality: Rabbit monoclonal antibody Clone ID: 24GB4950 Species Reactivity: Human Applications Used: Western Blotting (WB), Flow Cytometry (FCM)

Immunogen

A synthesized peptide derived from human Mad2L2

Isotype

Rabbit IgG

Storage Buffer

Supplied in PBS (pH 7.4) containing 50% glycerol, and 0.02% sodium azide.

Storage

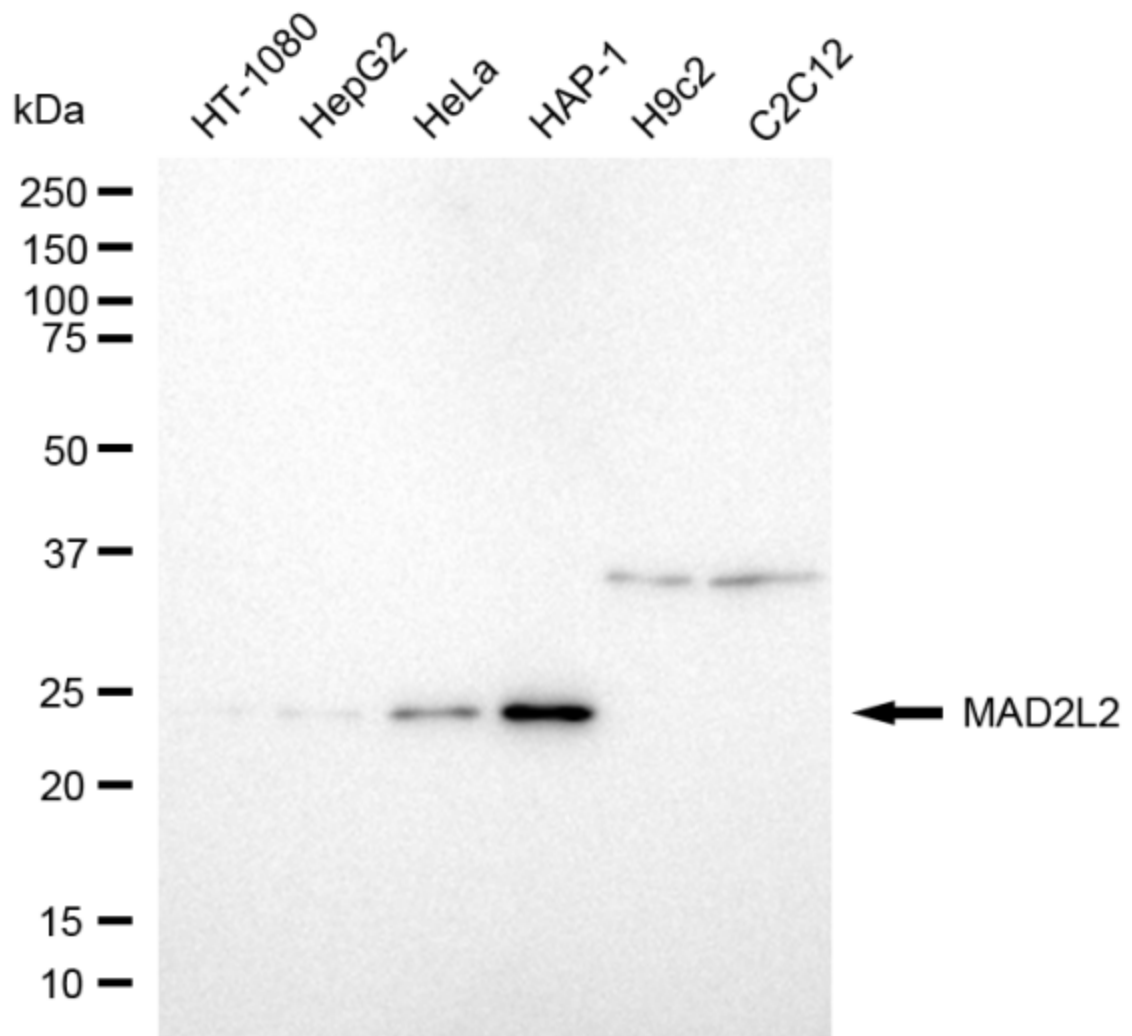
Store at -20 °C for one year.

Recommended Dilutions

Western Blotting (WB): 1:1,000-1:5,000 Flow Cytometry (FCM): 1:2,000

Protocols

For general and specific antibody protocols please visit our website. Read all instructions before using this product.



Western blotting analysis using anti-MAD2L2 antibody 1:5,000 and HRP-conjugated goat anti-rabbit secondary antibody 1:20,000 respectively. Image was developed using NaQ™ ECL Substrate Kit 1:5,000 and HRP-conjugated goat anti-rabbit secondary antibody 1:20,000 respectively. Image was developed using NaQ™ ECL Substrate Kit 1:2,000. Green, isotype control; red, MAD2L2 .