



SunLong Biotech Co.,LTD
Tel: 0086-571- 56623320 Fax:0086-571- 56623318
E-mail:sales@sunlongbiotech.com
www.sunlongbiotech.com

[KD-Validated] Anti-LYN Proto-Oncogene Rabbit Rabbit Monoclonal Antibody

Cat No.: KD-10564

Aliases:

LYN Proto-Oncogene, Src Family Tyrosine Kinase; JTK8; V-Yes-1 Yamaguchi Sarcoma Viral Related Oncogene Homolog; Lck/Yes-Related Novel Protein Tyrosine Kinase; Tyrosine-Protein Kinase Lyn; EC 2.7.10.2; P53Lyn; P56Lyn; EC 2.7.10; SAIDV

Background:

UniProt Entry: [P07948](#);NCBI Gene Entry: [4067](#)

Application Information

Molecular Weight: Predicted, 59 kDa, observed, 56 kDa Clonality: Rabbit monoclonal antibody Clone ID: 24GB720 Species Reactivity: Human, Mouse, Rat Applications Tested: Western Blotting (WB), Flow Cytometry (FCM), Immunocytochemistry (IC)

Immunogen

A synthesized peptide derived from human Lyn

Isotype

Rabbit IgG

Storage Buffer

Supplied in PBS (pH 7.4) containing 50% glycerol, and 0.02% sodium azide.

Storage

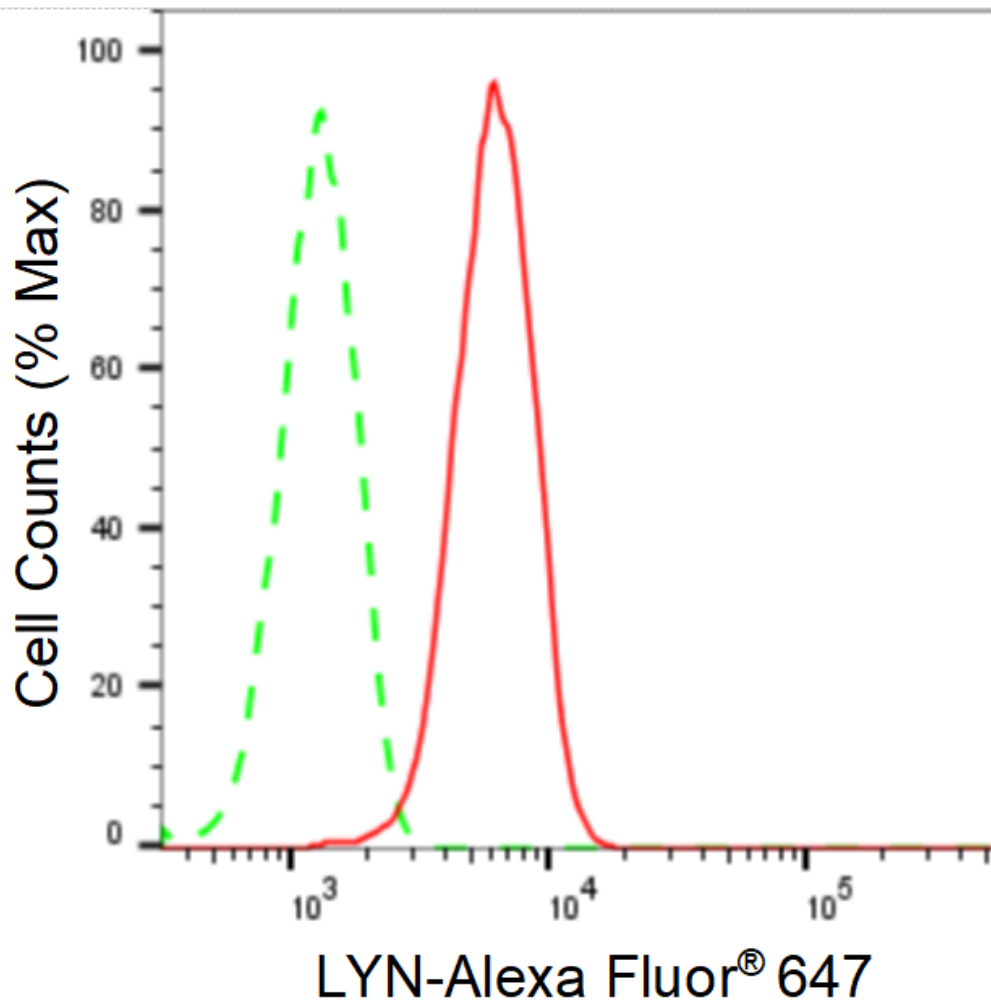
Store at -20 °C for one year.

Recommended Dilutions

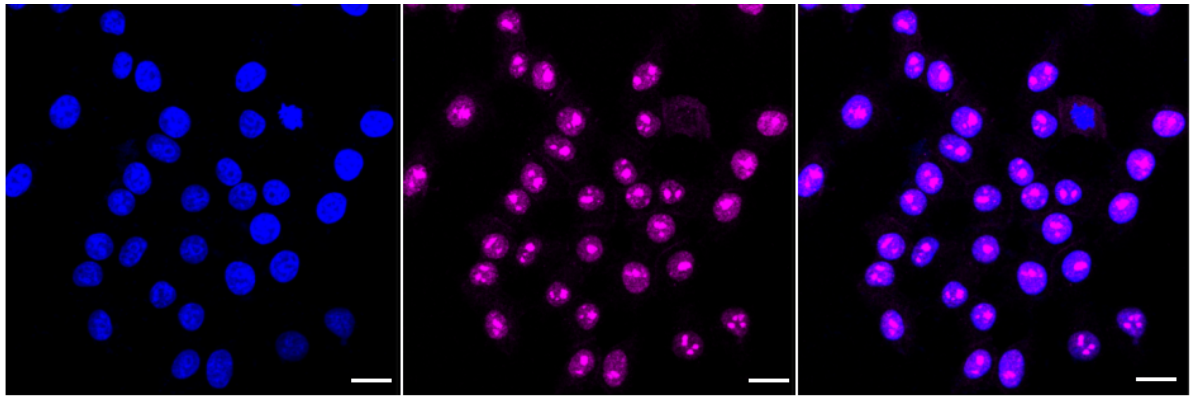
Western Blotting (WB): 1:1,000-1:5,000 Flow Cytometry (FCM): 1:2,000
Immunocytochemistry (IC): 1:1,000

Protocols

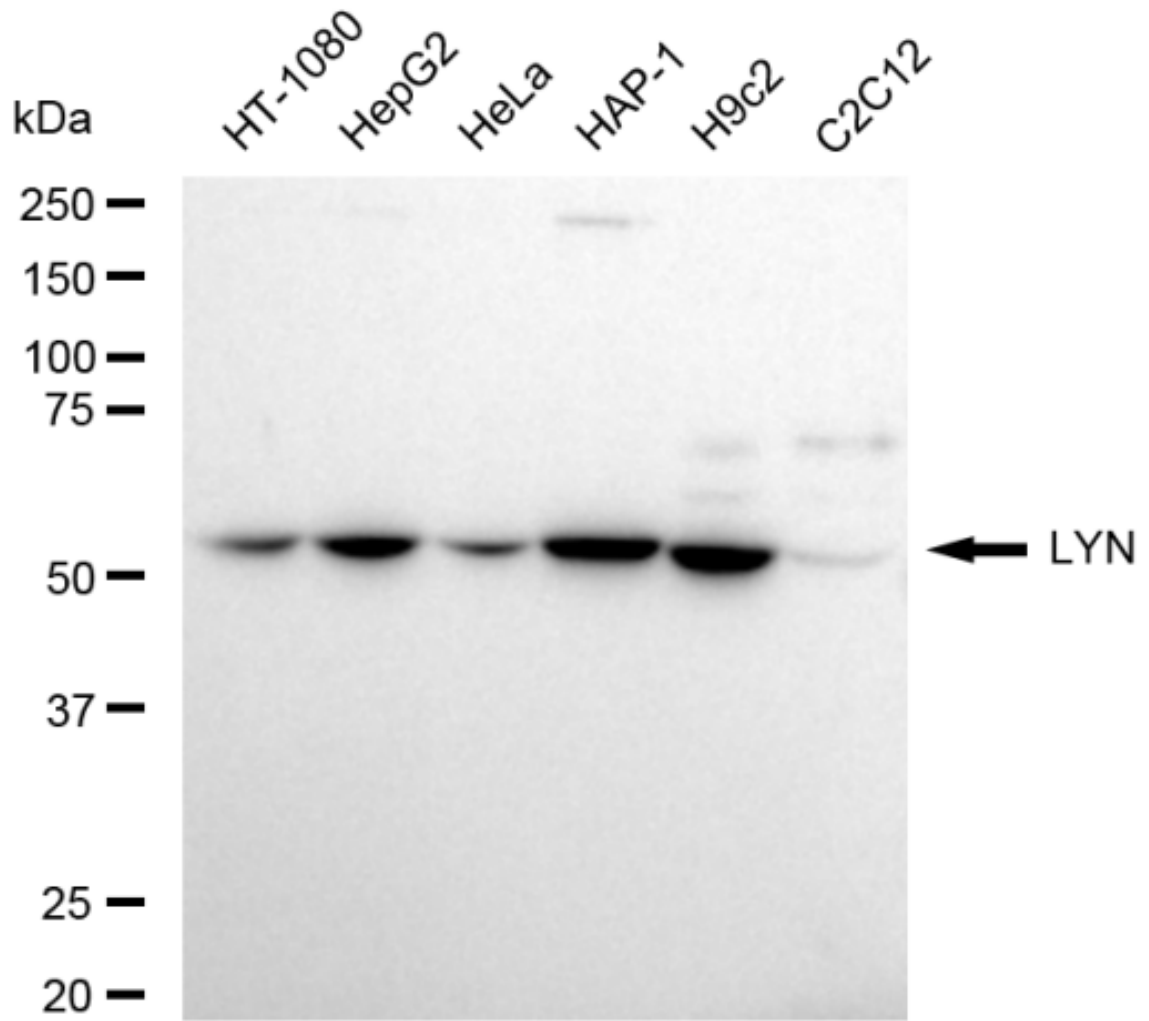
For general and specific antibody protocols please visit our website. Read all instructions before using this product.



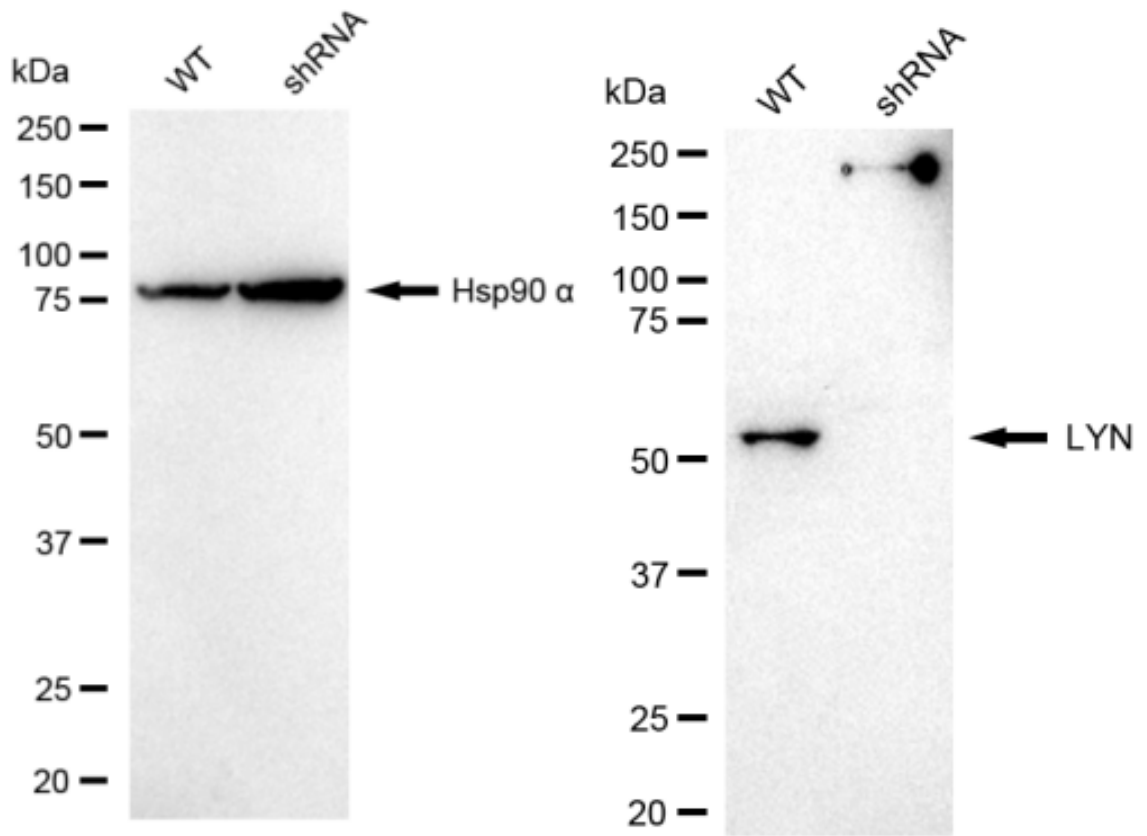
Flow cytometric analysis of LYN expression in HepG2 cells using anti-LYN antibody 1:2,000. Green, isotype control; red, LYN.



Immunocytochemical staining of HepG2 cells with anti-LYN antibody 1:1,000. Nuclei were stained blue with DAPI; LYN was stained magenta with Alexa Fluor® 647. Images were taken using Leica stellaris 5. Protein abundance based on laser Intensity and smart gain: High. Scale bar: 20 μ m.



Western blotting analysis using anti-LYN antibody 1:5,000 and HRP-conjugated goat anti-rabbit secondary antibody 1:20,000 respectively. Image was developed using FeQ™ ECL Substrate Kit .



Western blotting analysis using anti-LYN antibody 1:5,000 and HRP-conjugated goat anti-rabbit secondary antibody 1:20,000 respectively. Image was developed using NaQ™ ECL Substrate Kit .