



SunLong Biotech Co.,LTD
Tel: 0086-571- 56623320 Fax:0086-571- 56623318
E-mail:sales@sunlongbiotech.com
www.sunlongbiotech.com

[KD-Validated] Anti-Leucine Rich Alpha-2-Glycoprotein 1 Rabbit Monoclonal Antibody

Cat No.: KD-10559

Aliases:

Leucine Rich Alpha-2-Glycoprotein 1; LRG; Leucine Rich Alpha 2 Glycoprotein;
Leucine-Rich Alpha-2-Glycoprotein; 1300008B03Rik; 2310031E04Rik; HMFT1766

Background:

UniProt Entry: [P02750](#);NCBI Gene Entry: [116844](#)

Application Information

Molecular Weight: Predicted, 38 kDa, observed, 50 kDa Clonality: Rabbit monoclonal antibody Clone ID: 24GB545 Species Reactivity: Human Applications Used: Western Blotting (WB)

Immunogen

A synthesized peptide derived from human LRG1

Isotype

Rabbit IgG

Storage Buffer

Supplied in PBS (pH 7.4) containing 50% glycerol, and 0.02% sodium azide.

Storage

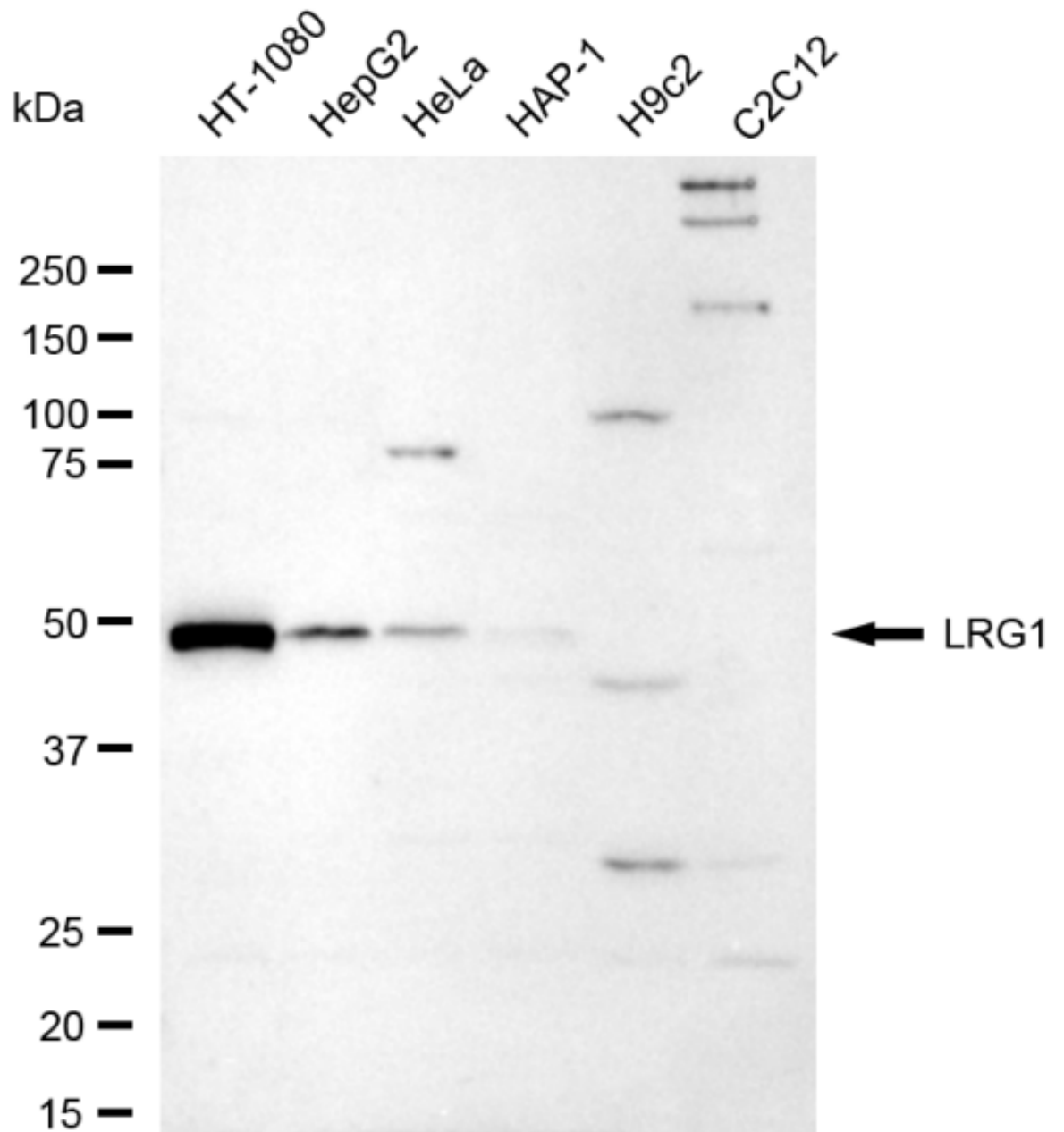
Store at -20 °C for one year.

Recommended Dilutions

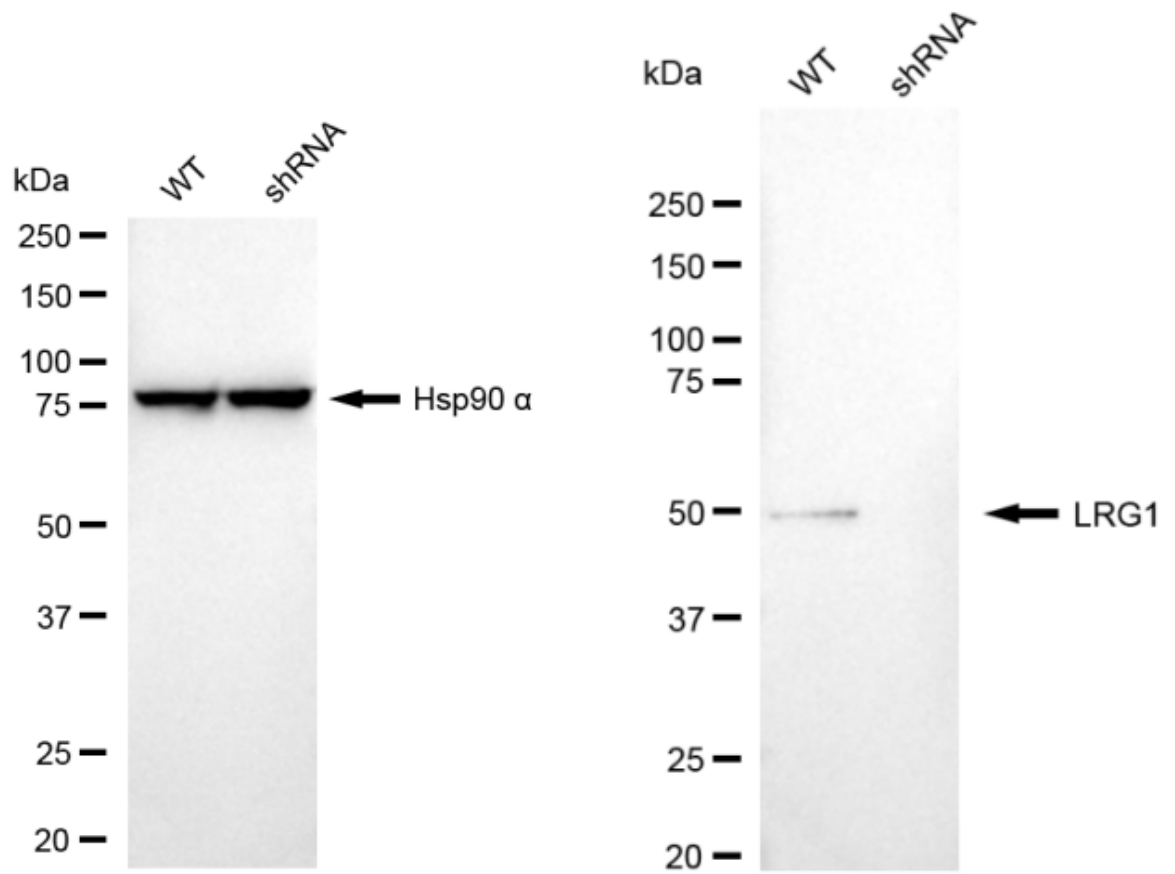
Western Blotting (WB): 1:1,000-1:5,000

Protocols

For general and specific antibody protocols please visit our website. Read all instructions before using this product.



Western blotting analysis using anti-LRG1 antibody 1:5,000 and HRP-conjugated goat anti-rabbit secondary antibody 1:20,000 respectively. Image was developed using FeQ™ ECL Substrate Kit .



Western blotting analysis using anti-LRG1 antibody 1:5,000 and HRP-conjugated goat anti-rabbit secondary antibody 1:20,000 respectively. Image was developed using NaQ™ ECL Substrate Kit .