



SunLong Biotech Co.,LTD
Tel: 0086-571- 56623320 Fax:0086-571- 56623318
E-mail:sales@sunlongbiotech.com
www.sunlongbiotech.com

[KD-Validated] Anti-Lysyl oxidase like 2 Rabbit Monoclonal Antibody

Cat No.: KD-10557

Aliases:

LOXL2; Lysyl Oxidase Like 2; WS9-14; LOR; Lysyl Oxidase-Related Protein WS9-14; Lysyl Oxidase-Related Protein 2; Lysyl Oxidase-Like Protein 2; Lysyl Oxidase Homolog 2; Lysyl Oxidase-Like 2 Delta E13; Lysyl Oxidase-Like 2 Protein; Lysyl Oxidase Related 2; Lysyl Oxidase-Like 2; EC 1.4.3.13; EC 1.4.3; LOR2

Background:

UniProt Entry: [Q9Y4K0](#);NCBI Gene Entry: [4017](#)

Application Information

Molecular Weight: Predicted, 87 kDa, observed, 53,106 kDa Clonality: Rabbit monoclonal antibody Clone ID: 23GB2610 Species Reactivity: Human, Mouse, Rat Applications Tested: Western Blotting (WB), Flow Cytometry (FCM), Immunocytochemistry (IC)

Immunogen

A synthesized peptide derived from human LOXL2

Isotype

Rabbit IgG

Storage Buffer

Supplied in PBS (pH 7.4) containing 50% glycerol, and 0.02% sodium azide.

Storage

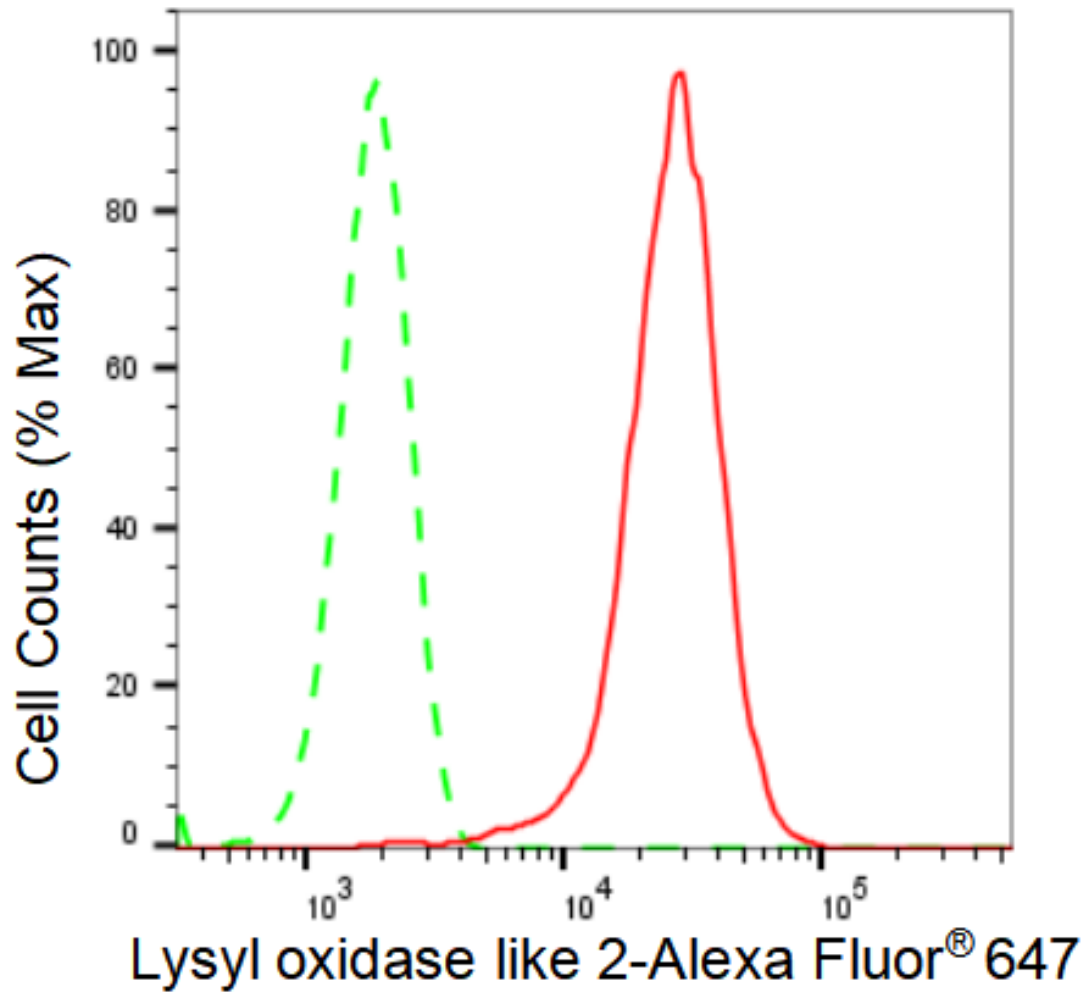
Store at -20 °C for one year.

Recommended Dilutions

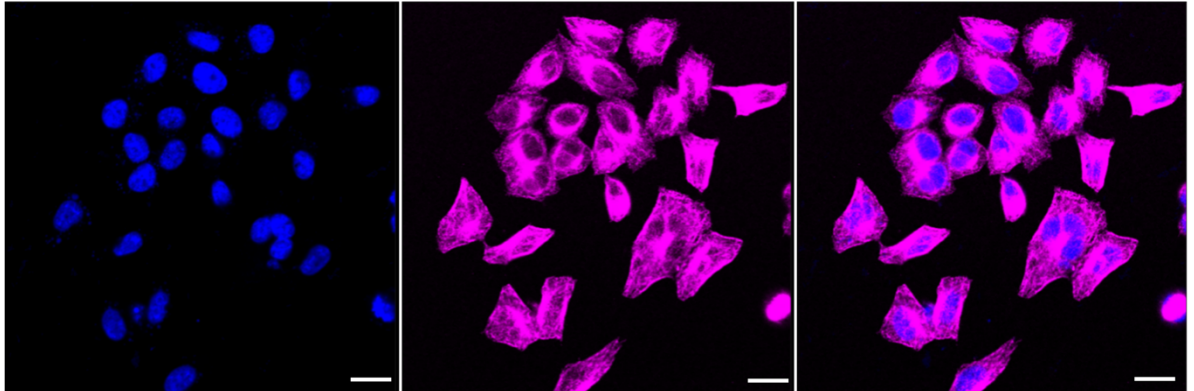
Western Blotting (WB): 1:1,000-1:5,000 Flow Cytometry (FCM): 1:2,000
Immunocytochemistry (IC): 1:1,000

Protocols

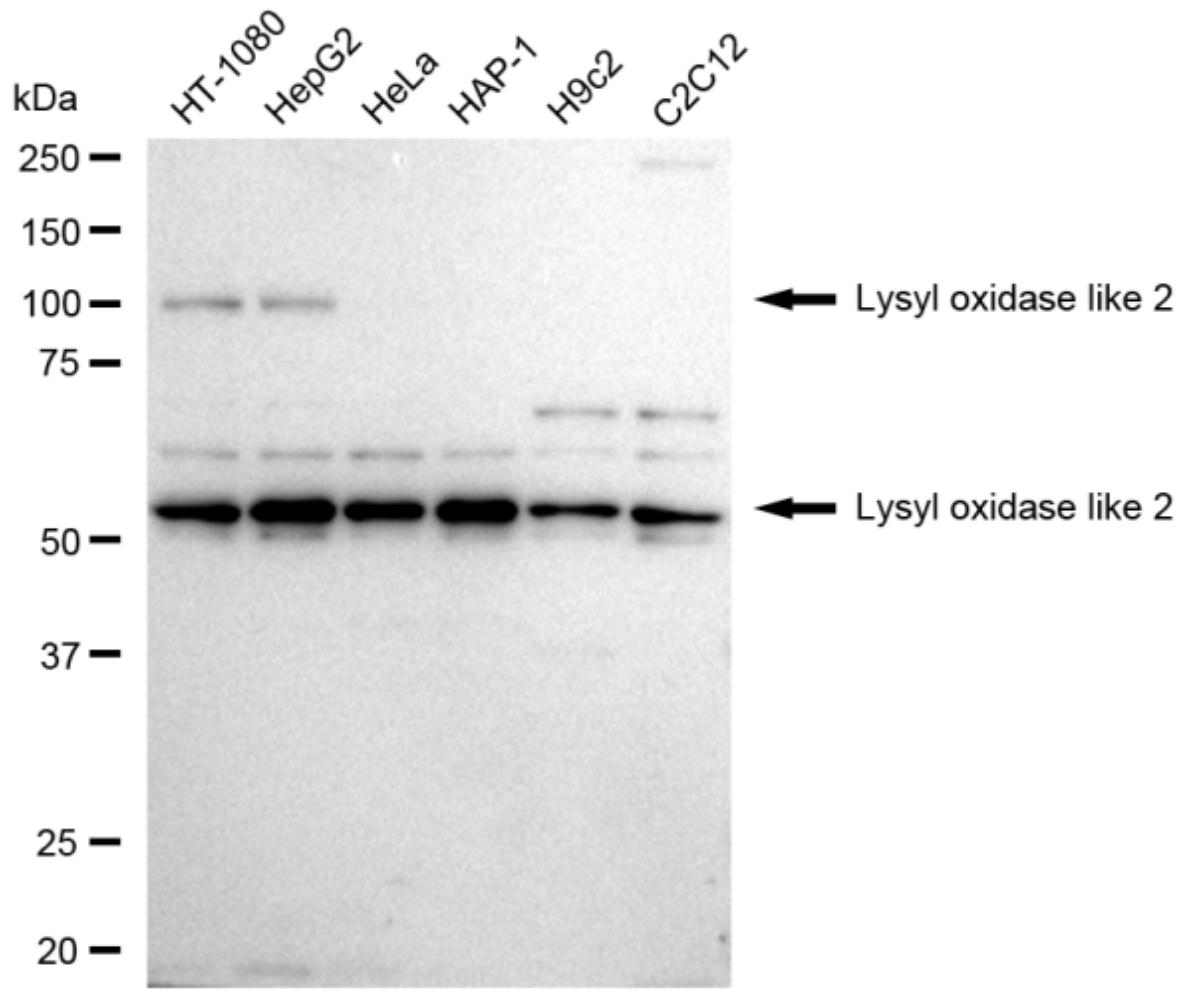
For general and specific antibody protocols please visit our website. Read all instructions before using this product.



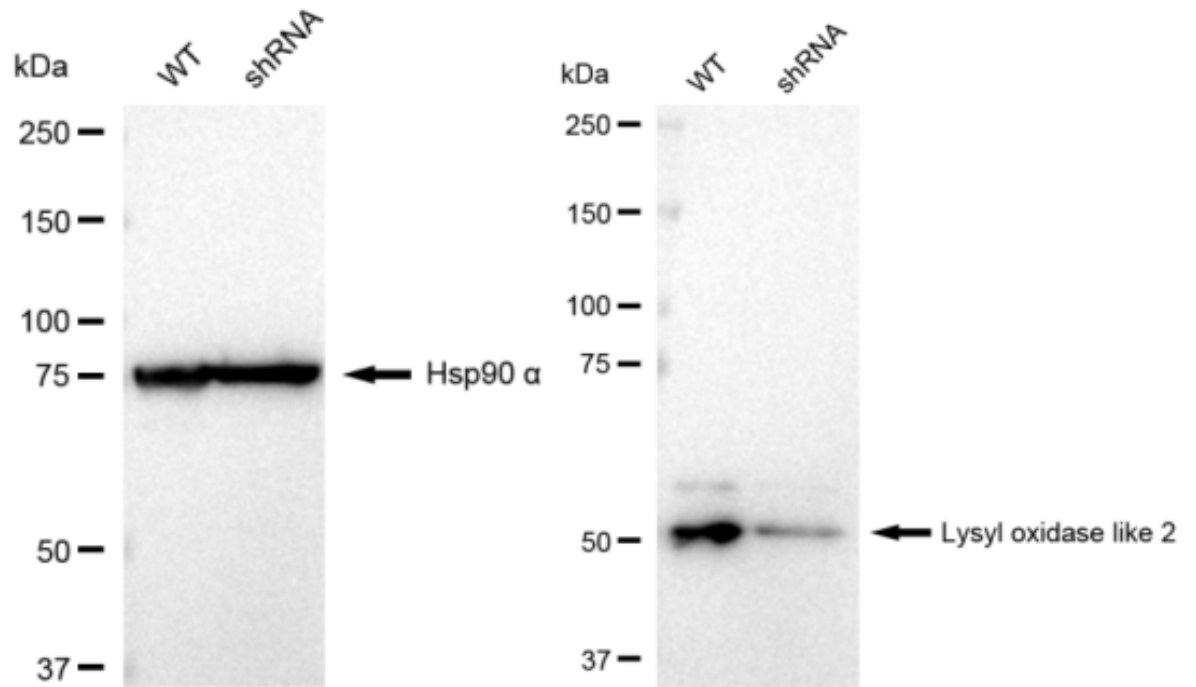
Flow cytometric analysis of Lysyl oxidase like 2 expression in HepG2 cells using Lysyl oxidase like 2 antibody 1:2,000. Green, isotype control; red, Lysyl oxidase like 2.



Immunocytochemical staining of HepG2 cells with Lysyl oxidase like 2 antibody 1:1,000. Nuclei were stained blue with DAPI; Lysyl oxidase like 2 was stained magenta with Alexa Fluor® 647. Images were taken using Leica stellaris 5. Protein abundance based on laser Intensity and smart gain: Medium. Scale bar: 20 μ m.



Western blotting analysis using anti-Lysyl oxidase like 2 antibody 1:5,000 and HRP-conjugated goat anti-rabbit secondary antibody 1:20,000 respectively. Image was developed using FeQ™ ECL Substrate Kit .



Western blotting analysis using anti-Lysyl oxidase like 2 antibody 1:5,000 and HRP-conjugated goat anti-rabbit secondary antibody 1:20,000 respectively. Image was developed using FeQ™ ECL Substrate Kit .