



SunLong Biotech Co.,LTD  
Tel: 0086-571- 56623320 Fax:0086-571- 56623318  
E-mail:sales@sunlongbiotech.com  
www.sunlongbiotech.com

## **[KD-Validated] Anti-Lamin B2 Rabbit Monoclonal Antibody**

Cat No.: KD-10556

### **Aliases:**

LMNB2; Lamin B2; LMN2; Lamin-B2; Epididymis Secretory Sperm Binding Protein; Lamin B3; MCPH27; LAMB2; EPM9

### **Background:**

UniProt Entry: [Q03252](#);NCBI Gene Entry: [84823](#)

### **Application Information**

Molecular Weight: Predicted, 68 kDa, observed, 68 kDa Clonality: Rabbit monoclonal antibody Clone ID: 23GB2605 Species Reaceivity: Human, Mouse Applicseions Tsted: Western Blotting (WB), Flow Cytometry (FCM), Immunocytochemistry (IC)

### **Immunogen**

A synthesized peptide derived from human Lamin B2

### **Isotype**

Rabbit IgG

### **Storage Buffer**

Supplied in PBS (pH 7.4) containing 50% glycerol, and 0.02% sodium azide.

### **Storage**

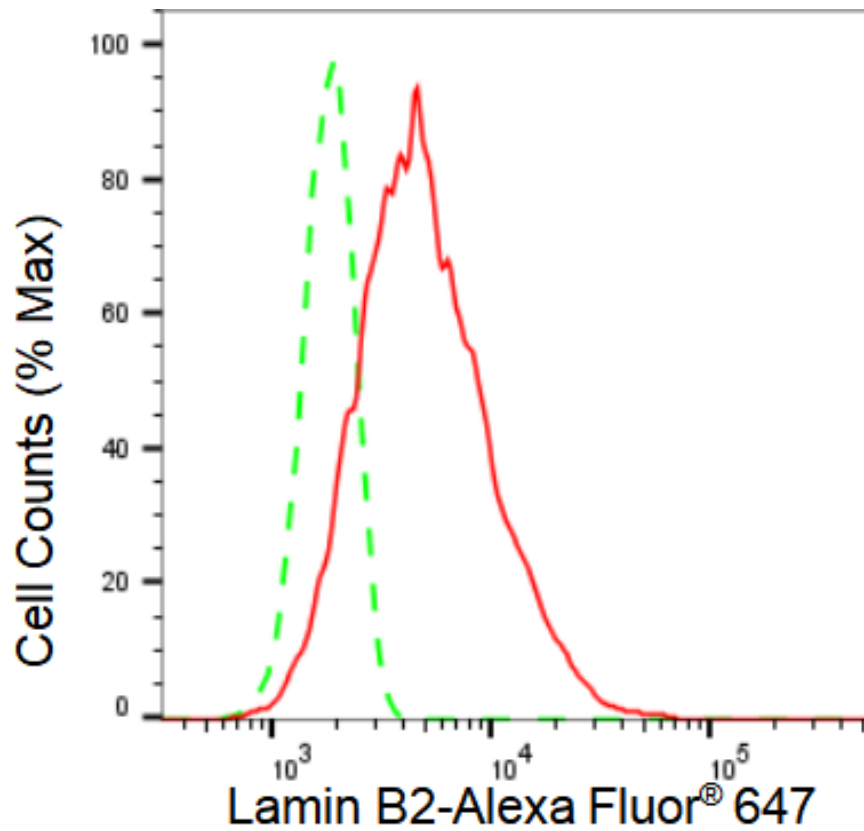
Store at -20 °C for one year.

#### Recommended Dilutions

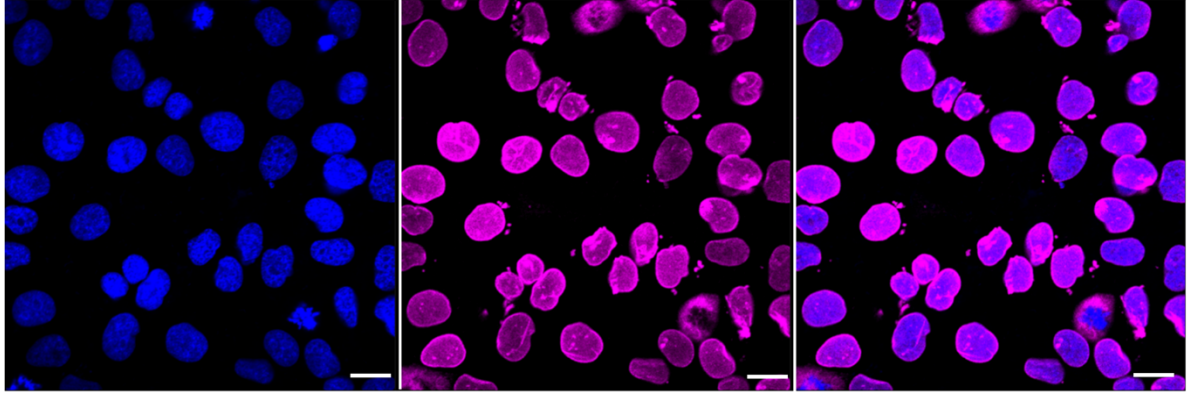
Western Blotting (WB): 1:1,000-1:5,000 Flow Cytometry (FCM): 1:2,000  
Immunocytochemistry (IC): 1:1,000

#### Protocols

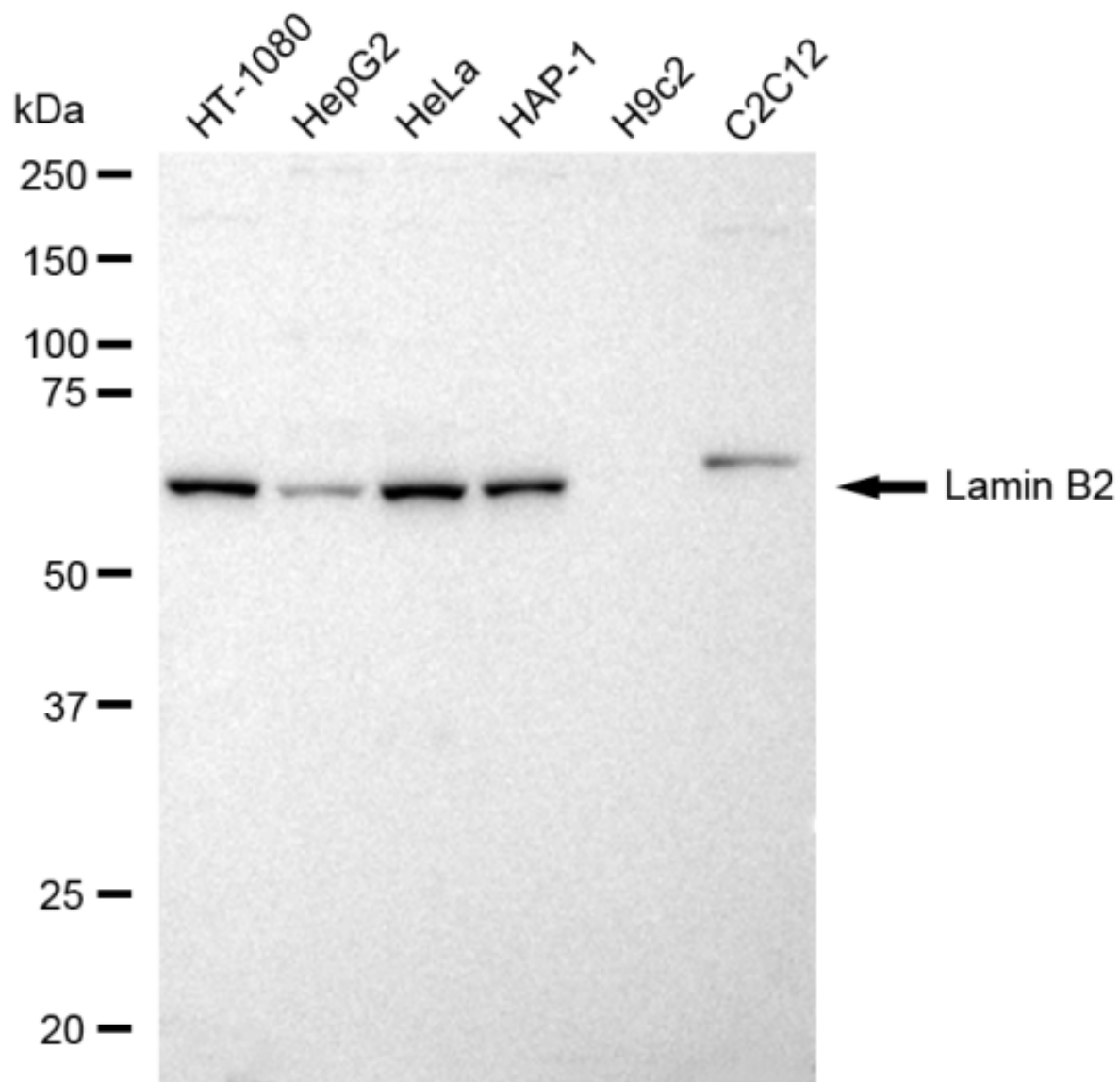
For general and specific antibody protocols please visit our website. Read all instructions before using this product.



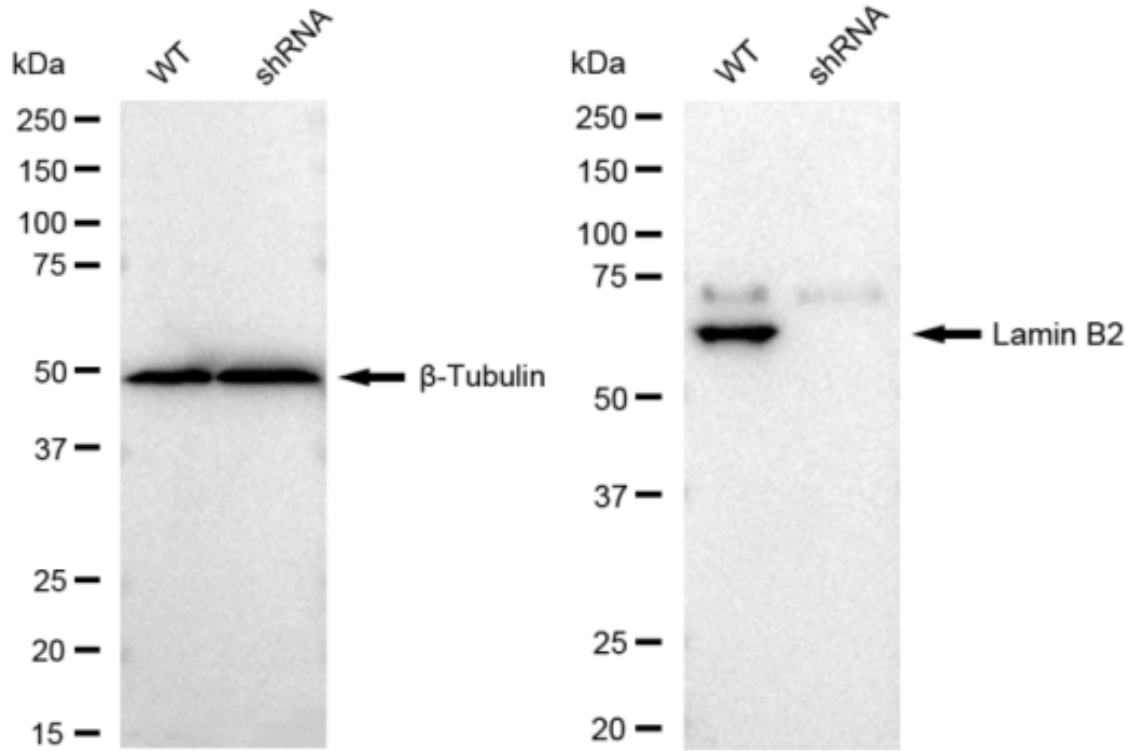
Flow cytometric analysis of Lamin B2 expression in HT-1080 cells using Lamin B2 antibody 1:2,000. Green, isotype control; red, Lamin B2.



Immunocytochemical staining of HT-1080 cells with Lamin B2 antibody 1:1,000 . Nuclei were stained blue with DAPI; Lamin B2 was stained magenta with Alexa Fluor® 647. Images were taken using Leica stellaris 5. Protein abundance based on laser Intensity and smart gain: Medium. Scale bar: 20  $\mu$ m.



Western blotting analysis using anti-Lamin B2 antibody 1:5,000 and HRP-conjugated goat anti-rabbit secondary antibody 1:20,000 respectively. Image was developed using FeQ™ ECL Substrate Kit .



Western blotting analysis using anti-Lamin B2 antibody 1:5000 and HRP-conjugated goat anti-rabbit secondary antibody 1:20000 respectively. Image was developed using FeQ™ ECL Substrate Kit .