



SunLong Biotech Co.,LTD
Tel: 0086-571- 56623320 Fax:0086-571- 56623318
E-mail:sales@sunlongbiotech.com
www.sunlongbiotech.com

[KD-Validated] Anti-LMAN1 Rabbit Monoclonal Antibody

Cat No.: KD-10555

Aliases:

LMAN1; Lectin, Mannose Binding; ERGIC53; ERGIC-53; MCFD1; FMFD1; F5F8D; MR60; Gp58; Endoplasmic Reticulum-Golgi Intermediate Compartment Protein; ER-Golgi Intermediate Compartment 53 KDa Protein; Intracellular Mannose-Specific Lectin MR60; Protein ERGIC-53; Coagulation Factor V-Factor VIII Combined Deficiency; Lectin, Mannose-Binding; Lectin Mannose-Binding; GP58

Background:

UniProt Entry: [P49257](#);NCBI Gene Entry: [3998](#)

Application Information

Molecular Weight: Predicted, 58 kDa, observed, 55 kDa Clonality: Rabbit monoclonal antibody Clone ID: 23GB4750 Species Reactivity: Human, Mouse, Rat Applications Tested: Western Blotting (WB)

Immunogen

A synthesized peptide derived from human LMAN1

Isotype

Rabbit IgG

Storage Buffer

Supplied in PBS (pH 7.4) containing 50% glycerol, and 0.02% sodium azide.

Storage

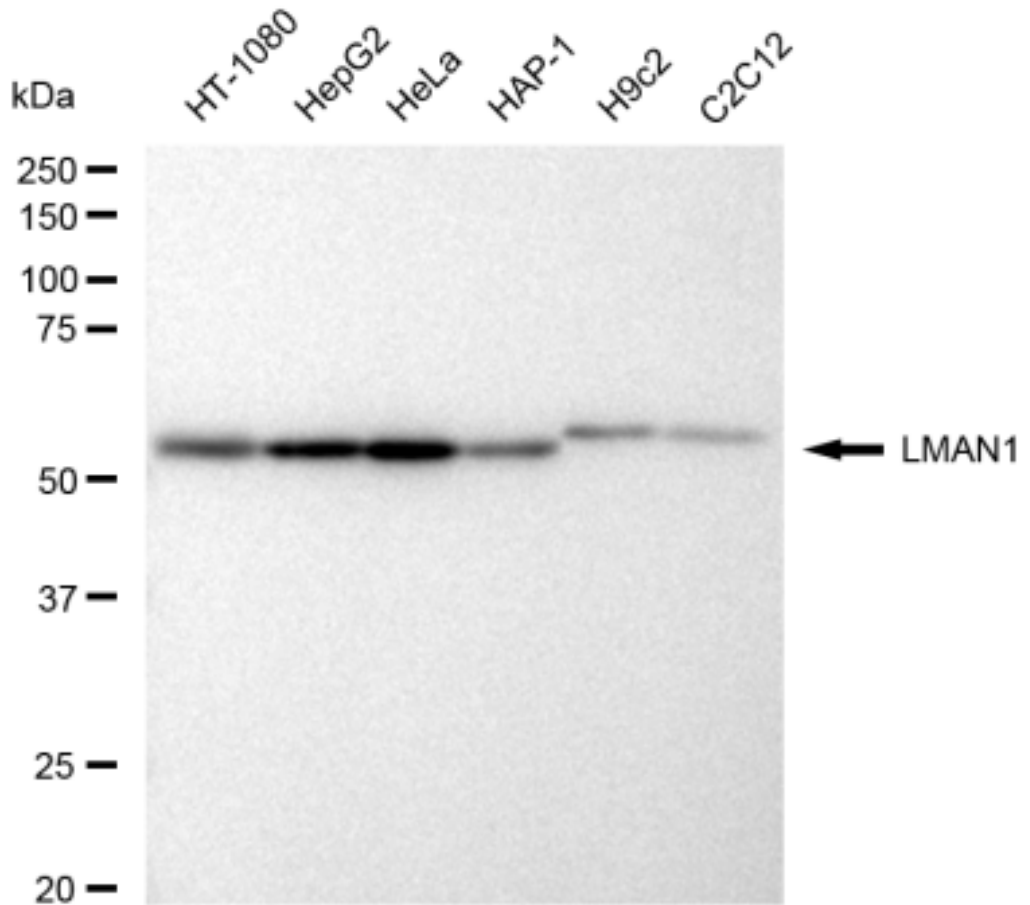
Store at -20 °C for one year.

Recommended Dilutions

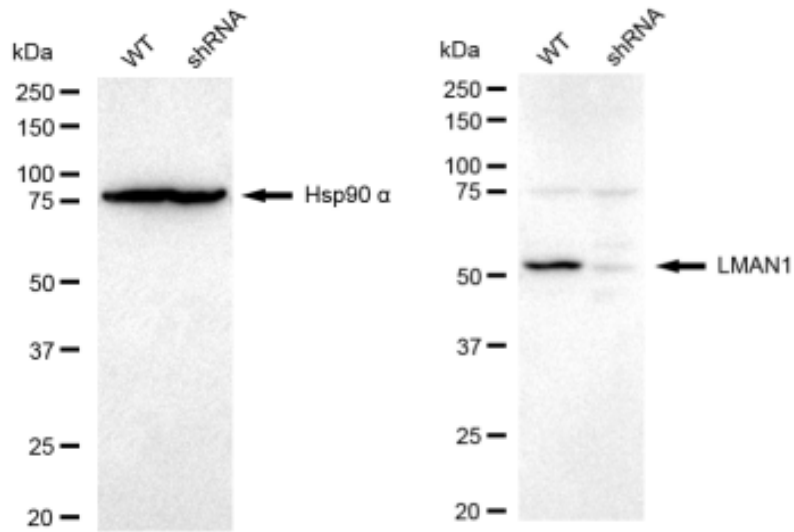
Western Blotting (WB): 1:1,000-1:5,000

Protocols

For general and specific antibody protocols please visit our website. Read all instructions before using this product.



Western blotting analysis using anti-LMAN1 antibody 1:5,000 and HRP-conjugated goat anti-rabbit secondary antibody 1:20,000 respectively. Image was developed using FeQ™ ECL Substrate Kit .



Western blotting analysis using anti-LMAN1 antibody 1:5,000 and HRP-conjugated goat anti-rabbit secondary antibody 1:20,000 respectively. Image was developed using FeQ™ ECL Substrate Kit .