



SunLong Biotech Co.,LTD
Tel: 0086-571- 56623320 Fax:0086-571- 56623318
E-mail:sales@sunlongbiotech.com
www.sunlongbiotech.com

[KD-Validated] Anti-LMAN1 Rabbit Monoclonal Antibody

Cat No.: KD-10554

Aliases:

LMAN1; Lectin, Mannose Binding 1; ERGIC53; ERGIC-53; MCFD1; FMFD1; F5F8D; MR60; Gp58; Endoplasmic Reticulum-Golgi Intermediate Compartment Protein 53; ER-Golgi Intermediate Compartment 53 KDa Protein; Intracellular Mannose-Specific Lectin MR60; Protein ERGIC-53; Coagulation Factor V-Factor VIII Combined Deficiency; Lectin, Mannose-Binding, 1; Lectin Mannose-Binding 1; GP58

Background:

UniProt Entry: [P49257](#);NCBI Gene Entry: [3998](#)

Application Information

Molecular Weight: Predicted, 58 kDa, observed, 53 kDa Clonality: Rabbit monoclonal antibody Clone ID: 23GB2835 Species Reactivity: Human, Mouse, Rat Applications Tested: Western Blotting (WB), Flow Cytometry (FCM), Immunocytochemistry (IC)

Immunogen

A synthesized peptide derived from human LMAN1

Isotype

Rabbit IgG

Storage Buffer

Supplied in PBS (pH 7.4) containing 50% glycerol, and 0.02% sodium azide.

Storage

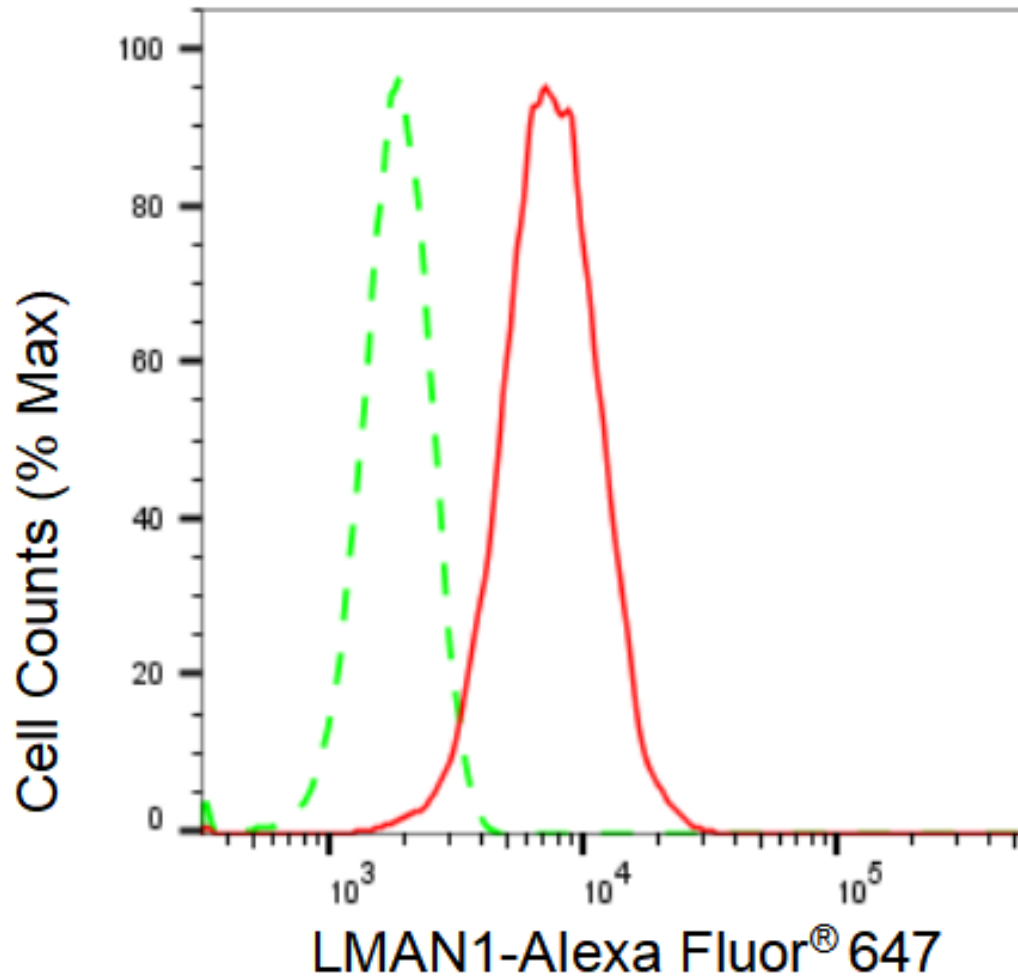
Store at -20 °C for one year.

Recommended Dilutions

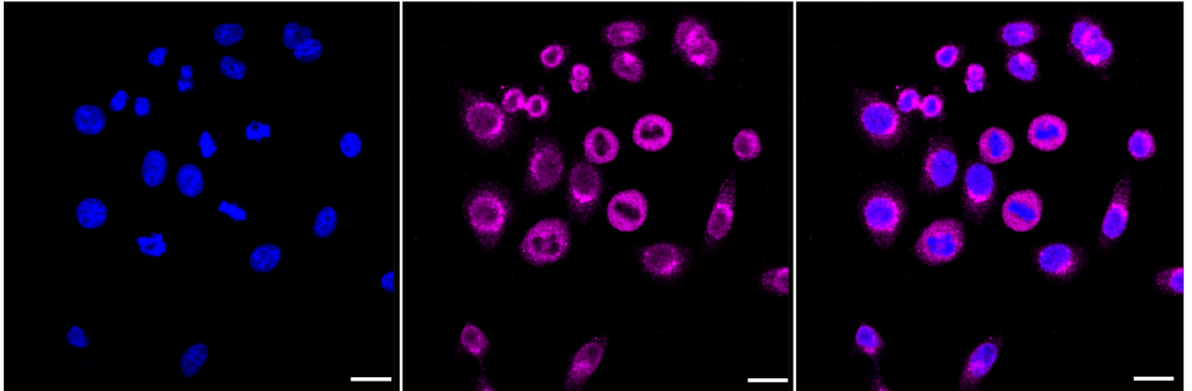
Western Blotting (WB): 1:1,000-1:5,000 Flow Cytometry (FCM): 1:2,000
Immunocytochemistry (IC): 1:1,000

Protocols

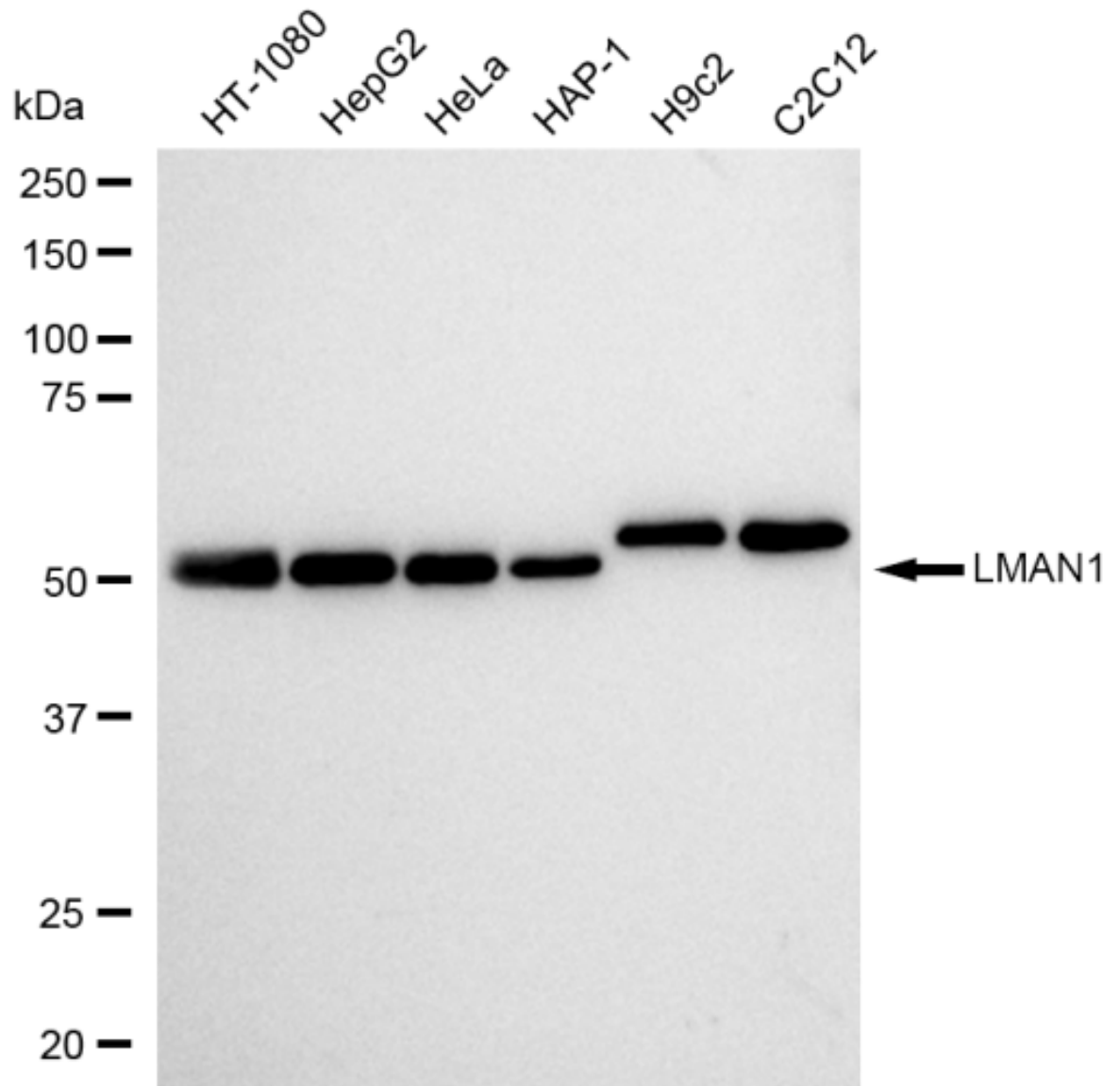
For general and specific antibody protocols please visit our website. Read all instructions before using this product.



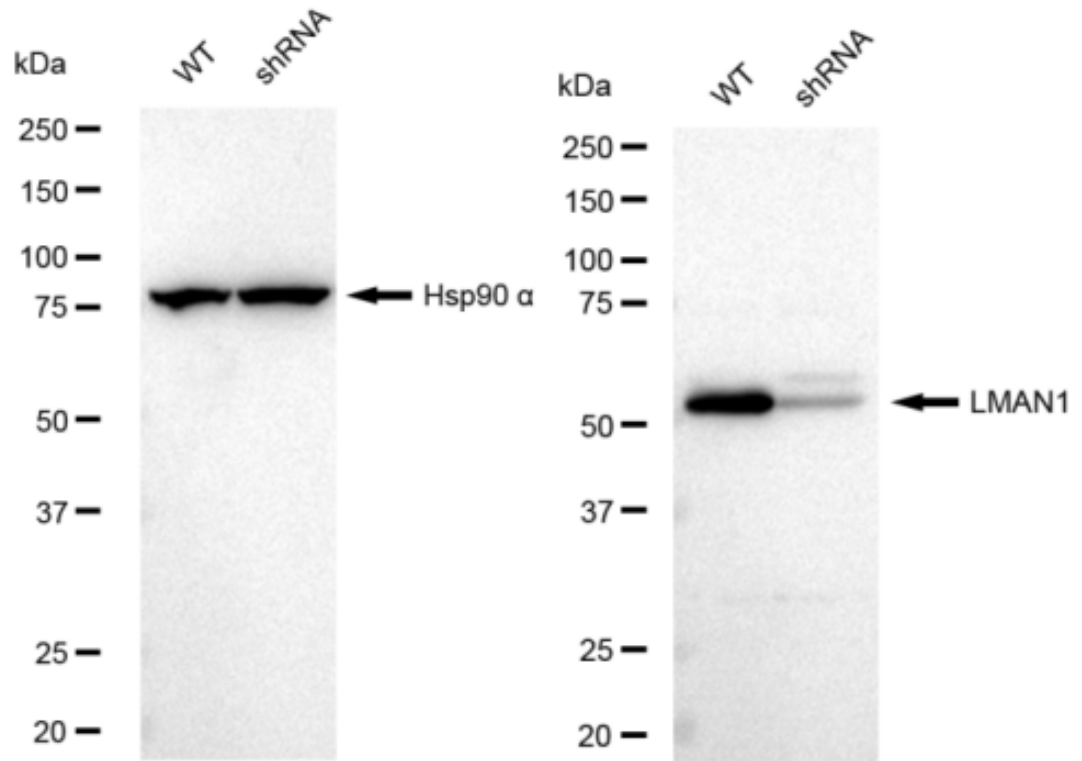
Flow cytometric analysis of LMAN1 expression in HepG2 cells using LMAN1 antibody 1:2,000. Green, isotype control; red, LMAN1.



Immunocytochemical staining of HepG2 cells with LMAN1 antibody 1:1,000. Nuclei were stained blue with DAPI; LMAN1 was stained magenta with Alexa Fluor® 647. Images were taken using Leica stellaris 5. Protein abundance based on laser Intensity and smart gain: Medium. Scale bar: 20 μm .



Western blotting analysis using anti-LMAN1 antibody 1:5,000 and HRP-conjugated goat anti-rabbit secondary antibody 1:20,000 respectively. Image was developed using FeQ™ ECL Substrate Kit .



Western blotting analysis using anti-LMAN1 antibody 1:5,000 and HRP-conjugated goat anti-rabbit secondary antibody 1:20,000 respectively. Image was developed using FeQ™ ECL Substrate Kit .