



SunLong Biotech Co.,LTD
Tel: 0086-571- 56623320 Fax:0086-571- 56623318
E-mail:sales@sunlongbiotech.com
www.sunlongbiotech.com

[KD-Validated] Anti-DNA ligase 4 Rabbit Monoclonal Antibody

Cat No.: KD-10553

Aliases:

LIG4; DNA Ligase 4; Polydeoxyribonucleotide Synthase [ATP] 4; DNA Ligase IV; Ligase IV, DNA, ATP-Dependent; Polynucleotide Ligase; DNA Repair Enzyme; DNA Joinase; EC 6.5.1.1; Sealase; LIG4S

Background:

UniProt Entry: [P49917](#);NCBI Gene Entry: [3981](#)

Application Information

Molecular Weight: Predicted, 104 kDa, observed, 103 kDa Clonality: Rabbit monoclonal antibody Clone ID: 23GB2515 Species Reactivity: Human Applications: Western Blotting (WB), Flow Cytometry (FCM), Immunocytochemistry (IC)

Immunogen

A synthesized peptide derived from human DNA Ligase IV

Isotype

Rabbit IgG

Storage Buffer

Supplied in PBS (pH 7.4) containing 50% glycerol, and 0.02% sodium azide.

Storage

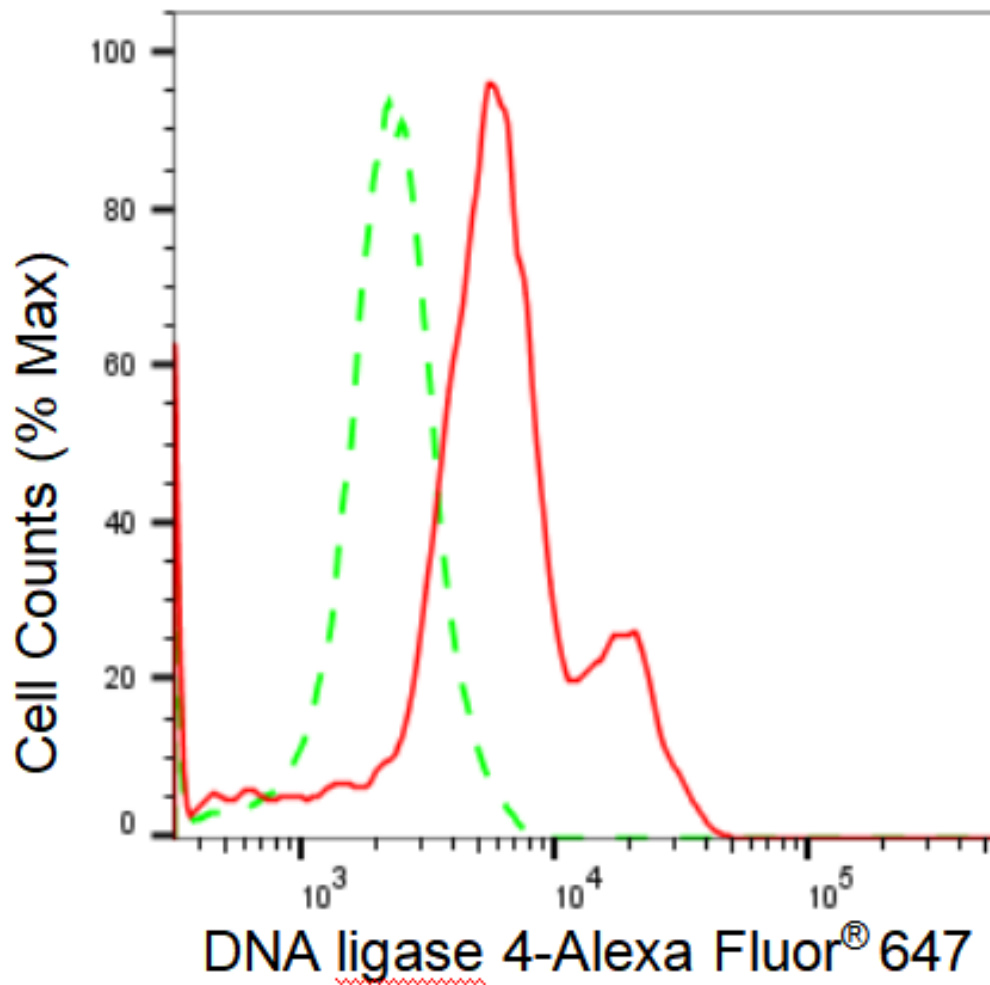
Store at -20 °C for one year.

Recommended Dilutions

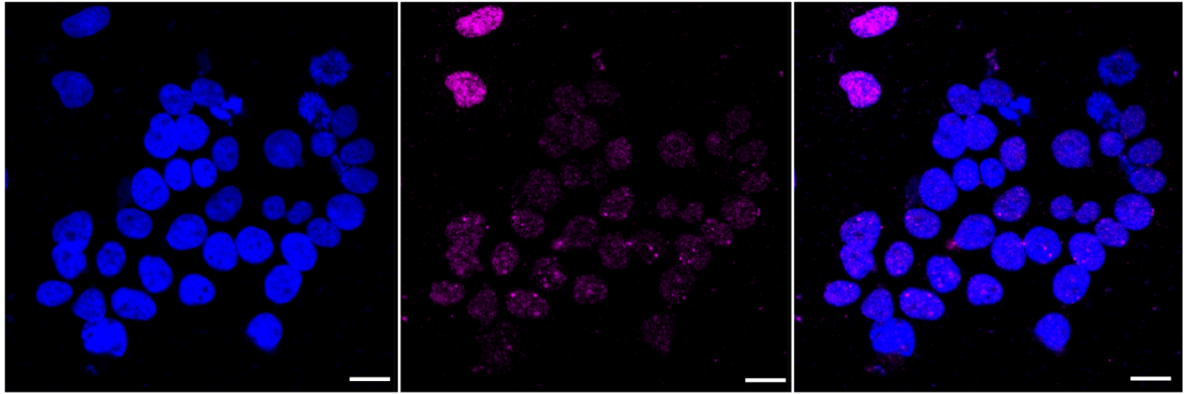
Western Blotting (WB): 1:1,000-1:5,000 Flow Cytometry (FCM): 1:2,000
Immunocytochemistry (IC): 1:1,000

Protocols

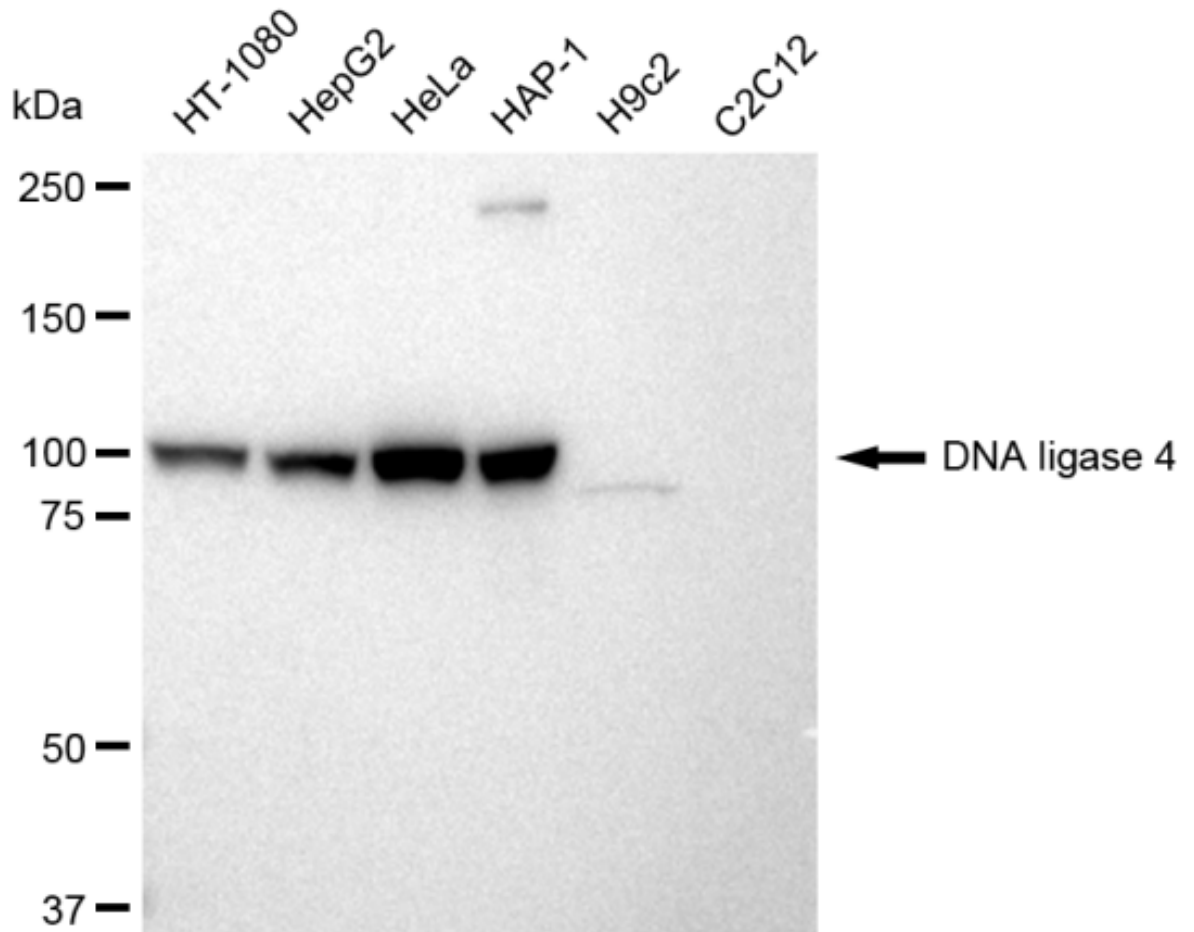
For general and specific antibody protocols please visit our website. Read all instructions before using this product.



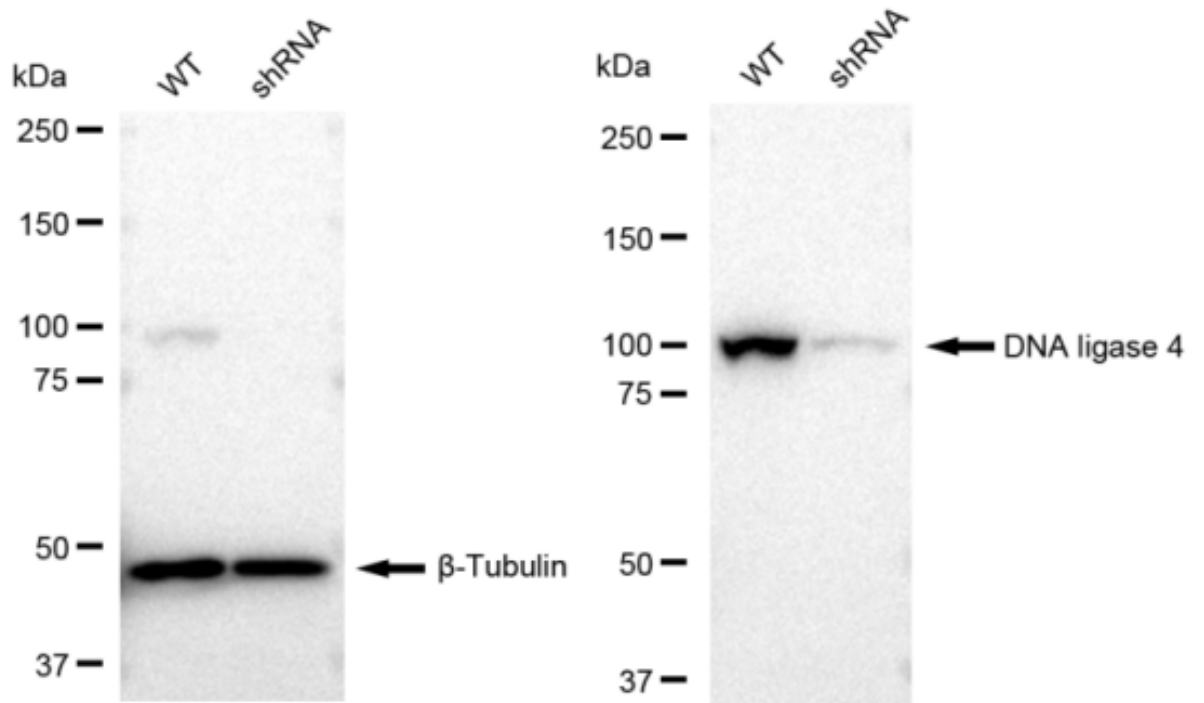
Flow cytometric analysis of DNA ligase 4 expression in HeLa cells using DNA ligase 4 antibody 1:2,000. Green, isotype control; red, DNA ligase 4.



Immunocytochemical staining of HeLa cells with DNA ligase 4 antibody 1:1,000. Nuclei were stained blue with DAPI; DNA ligase 4 was stained magenta with Alexa Fluor® 647. Images were taken using Leica stellaris 5. Protein abundance based on laser Intensity and smart gain: Low. Scale bar: 20 μ m.



Western blotting analysis using anti-DNA ligase 4 antibody 1:5,000 and HRP-conjugated goat anti-rabbit secondary antibody 1:20,000 respectively. Image was developed using FeQ™ ECL Substrate Kit .



Western blotting analysis using anti-DNA ligase 4 antibody 1:5,000 and HRP-conjugated goat anti-rabbit secondary antibody 1:20,000 respectively. Image was developed using FeQ™ ECL Substrate Kit .