



SunLong Biotech Co.,LTD  
Tel: 0086-571- 56623320 Fax:0086-571- 56623318  
E-mail:sales@sunlongbiotech.com  
www.sunlongbiotech.com

## [KD-Validated] Anti-Legumain Rabbit Monoclonal Antibody

Cat No.: KD-10552

### Aliases:

LGMN; Legumain; LGMN1; PRSC1; Protease, Cysteine, 1 (Legumain) ; Asparaginyl Endopeptidase; Protease, Cysteine 1; EC 3.4.22.34; Cysteine Protease 1; AEP

### Background:

UniProt Entry: [Q99538](#);NCBI Gene Entry: [5641](#)

### Application Information

Molecular Weight: Predicted, 49 kDa, observed, 36,57 kDa Clonality: Rabbit monoclonal antibody Clone ID: 23GB2095 Spncies Reactivity: Human, Rat Applications Tested: Western Blotting (WB), Flow Cytometry (FCM)

### Immunogen

A synthesized peptide derived from human Legumain

### Isotype

Rabbit IgG

### Storage Buffer

Supplied in PBS (pH 7.4) containing 50% glycerol, and 0.02% sodium azide.

### Storage

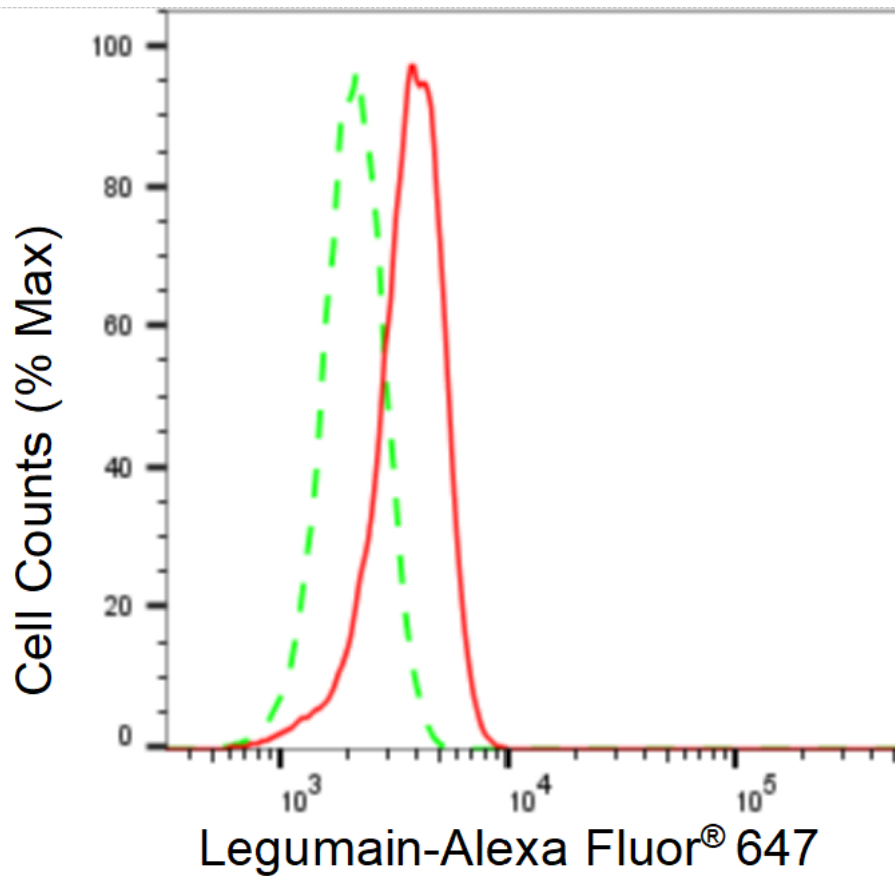
Store at -20 °C for one year.

#### Recommended Dilutions

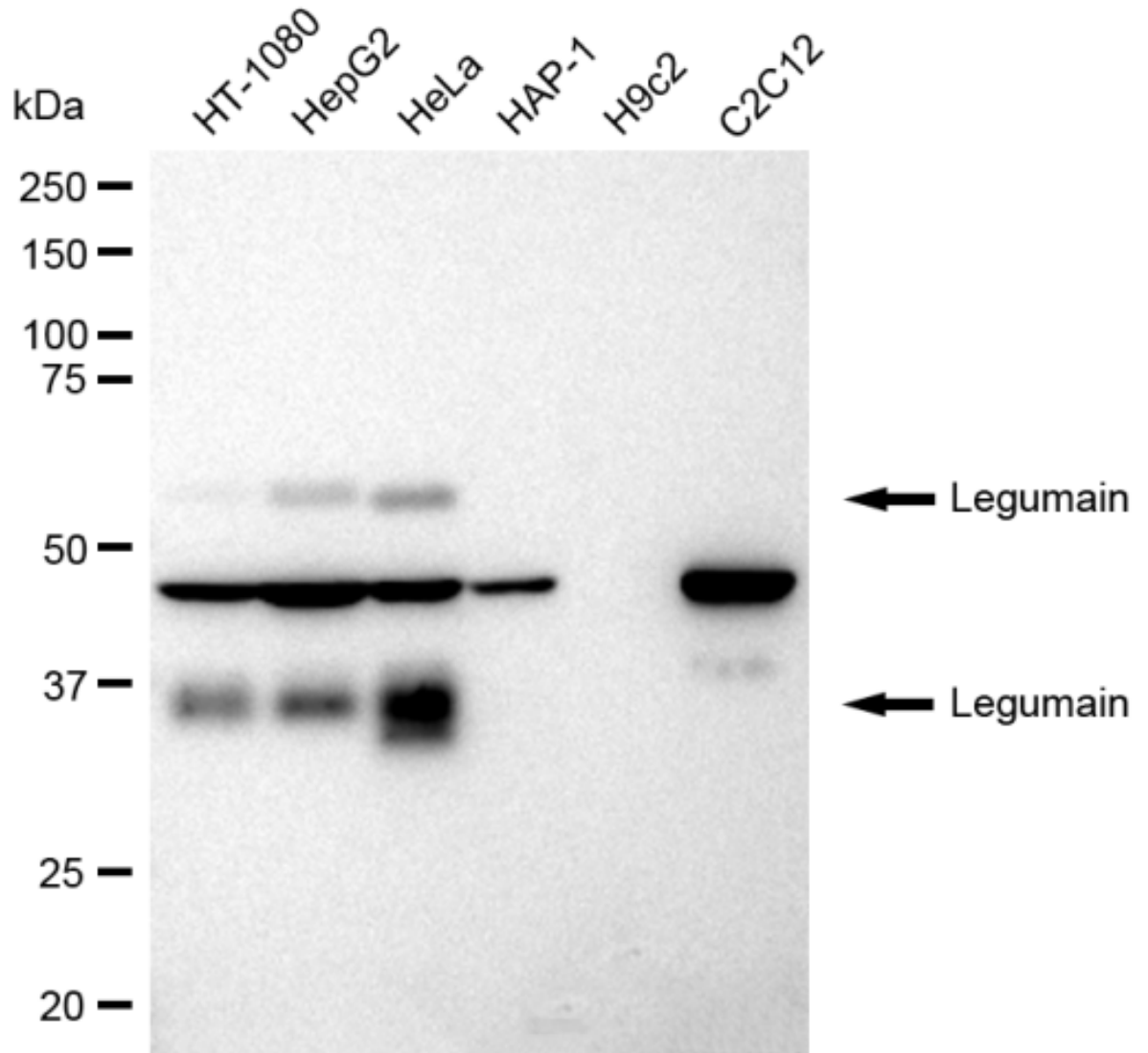
Western Blotting (WB): 1:1,000-1:5,000 Flow Cytometry (FCM): 1:2,000

#### Protocols

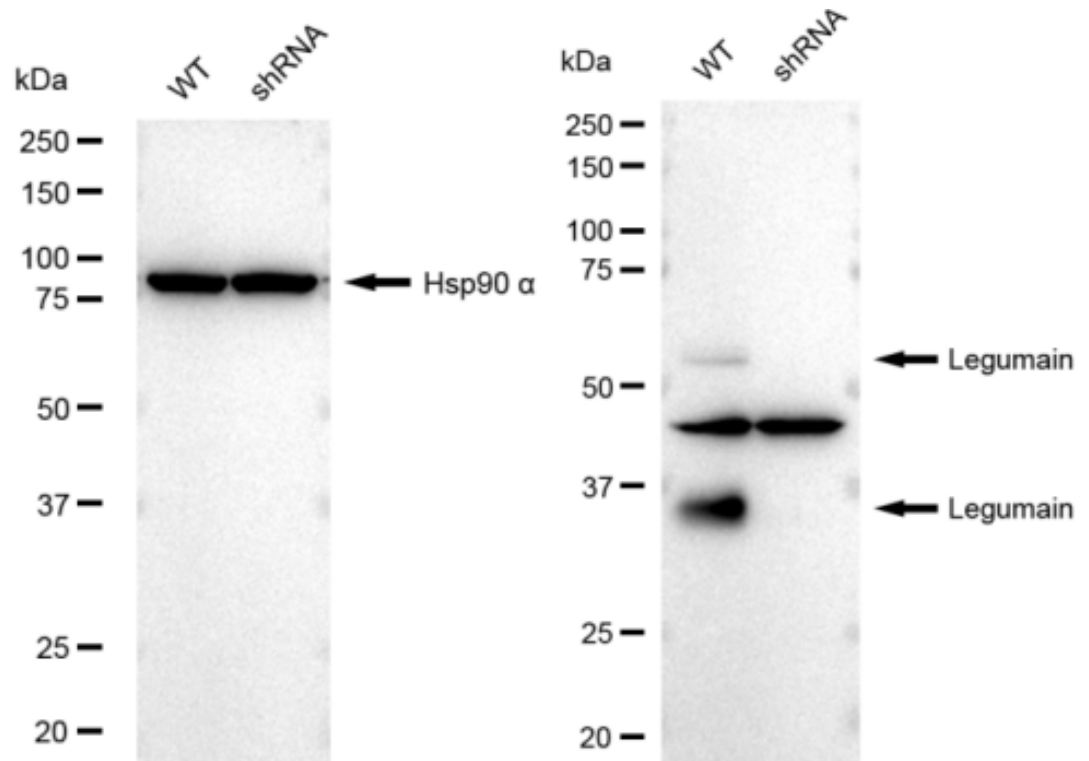
For general and specific antibody protocols please visit our website. Read all instructions before using this product.



Flow cytometric analysis of Legumain expression in HeLa cells using Legumain antibody 1:2,000. Green, isotype control; red, Legumain.



Western blotting analysis using anti-Legumain antibody 1:5,000 and HRP-conjugated goat anti-rabbit secondary antibody 1:20,000 respectively. Image was developed using FeQ™ ECL Substrate Kit .



Western blotting analysis using anti-Legumain antibody 1:5,000 and HRP-conjugated goat anti-rabbit secondary antibody 1:20,000 respectively. Image was developed using FeQ™ ECL Substrate Kit .