



SunLong Biotech Co.,LTD
Tel: 0086-571- 56623320 Fax:0086-571- 56623318
E-mail:sales@sunlongbiotech.com
www.sunlongbiotech.com

[KD-Validated] Anti-Galectin 1 Rabbit Monoclonal Antibody

Cat No.: KD-10548

Aliases:

LGALS1; Galectin 1; GBP; Lectin, Galactoside-Binding, Soluble, 1; Beta-Galactoside-Binding Lectin L-14-I; Putative MAPK-Activating Protein PM12; 14 KDa Laminin-Binding Protein; Lactose-Binding Lectin 1; S-Lac Lectin 1; 14 KDa Lectin; Galectin-1; Galaptin; HLBP14; Gal-1; HBL; HPL; Epididymis Secretory Sperm Binding Protein; Beta-Galactoside-Binding Protein 14kDa; Lectin Galactoside-Binding Soluble 1; GAL1

Background:

UniProt Entry: [P09382](#);NCBI Gene Entry: [3956](#)

Application Information

Molecular Weight: Predicted, 15 kDa, observed, 15 kDa Clonality: Rabbit monoclonal antibody Clone ID: 23GB6280 Species Reactivity: Human, Mouse, Rat Applications Tested: Western Blotting (WB), Flow Cytometry (FCM)

Immunogen

A synthesized peptide derived from human Galectin 1

Isotype

Rabbit IgG

Storage Buffer

Supplied in PBS (pH 7.4) containing 50% glycerol, and 0.02% sodium azide.

Storage

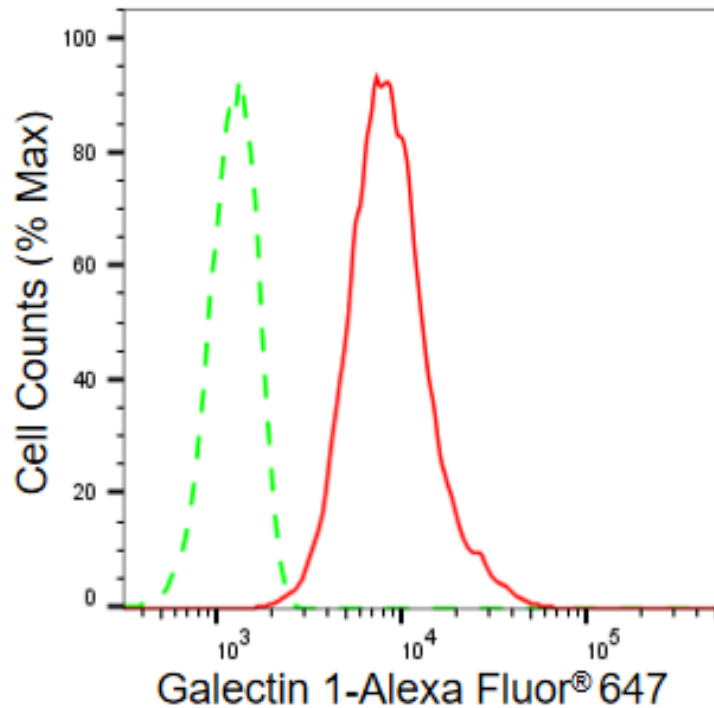
Store at -20 °C for one year.

Recommended Dilutions

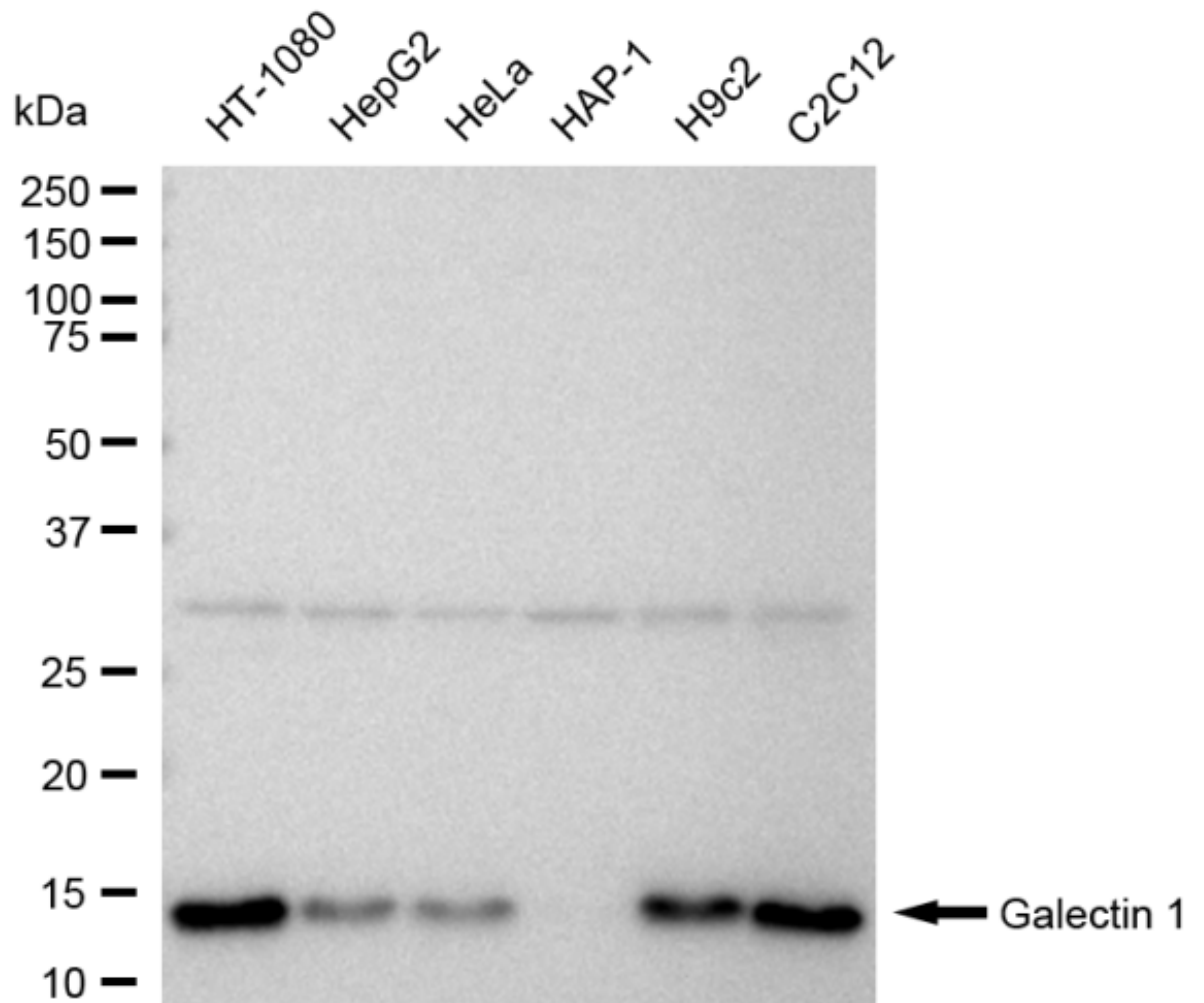
Western Blotting (WB): 1:1,000-1:5,000 Flow Cytometry (FCM): 1:2,000

Protocols

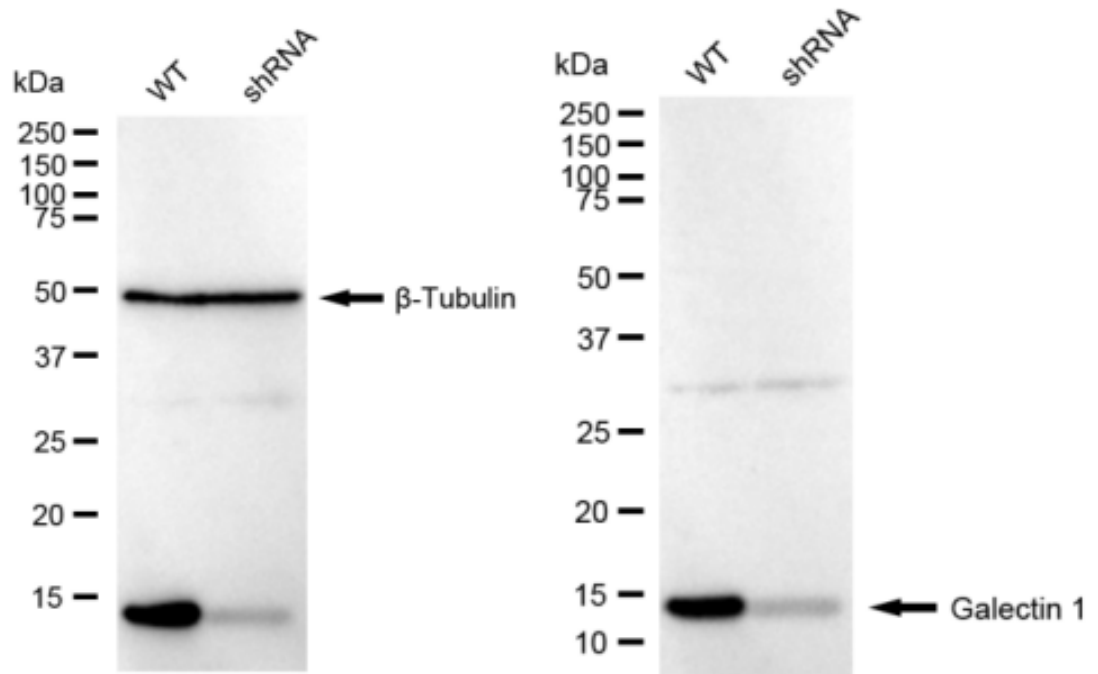
For general and specific antibody protocols please visit our website. Read all instructions before using this product.



Flow cytometric analysis of Galectin 1 expression in C2C12 cells using Galectin 1 antibody 1:2,000. Green, isotype control; red, Galectin 1.



Western blotting analysis using anti-Galectin 1 antibody 1:5,000 and HRP-conjugated goat anti-rabbit secondary antibody 1:20,000 respectively. Image was developed using FeQ™ ECL Substrate Kit .



Western blotting analysis using anti-Galectin 1 antibody 1:5,000 and HRP-conjugated goat anti-rabbit secondary antibody 1:20,000 respectively. Image was developed using FeQ™ ECL Substrate Kit .