



SunLong Biotech Co.,LTD
Tel: 0086-571- 56623320 Fax:0086-571- 56623318
E-mail:sales@sunlongbiotech.com
www.sunlongbiotech.com

[KD-Validated] Anti-LEFTY1 + LEFTY2 Rabbit Monoclonal Antibody

Cat No.: KD-10546

Aliases:

LEFTY2; Left-Right Determination Factor 2; LEFTYA; LEFTA; TGFB4; EBAF; Endometrial Bleeding-Associated Factor; Left-Right Determination Factor A; Transforming Growth Factor Beta-4; Protein Lefty-2; Protein Lefty-A; TGF-Beta-4; Endometrial Bleeding Associated Factor (Left-Right Determination, Factor A; Transforming Growth Factor Beta Superfamily); Transforming Growth Factor, Beta-4 (Endometrial Bleeding-Associated Factor; LEFTY A)

Background:

UniProt Entry: [O00292](#);NCBI Gene Entry: [7044](#)

Application Information

Molecular Weight: Predicted, 41 kDa, observed, 34 kDa Clonality: Rabbit monoclonal antibody Clone ID: 24GB6115 Species Reactivity: Human, Mouse, Rat Applications Tested: Western Blotting (WB), Immunocytochemistry (IC)

Immunogen

A synthesized peptide derived from human LEFTY1 + LEFTY2

Isotype

Rabbit IgG

Storage Buffer

Supplied in PBS (pH 7.4) containing 50% glycerol, and 0.02% sodium azide.

Storage

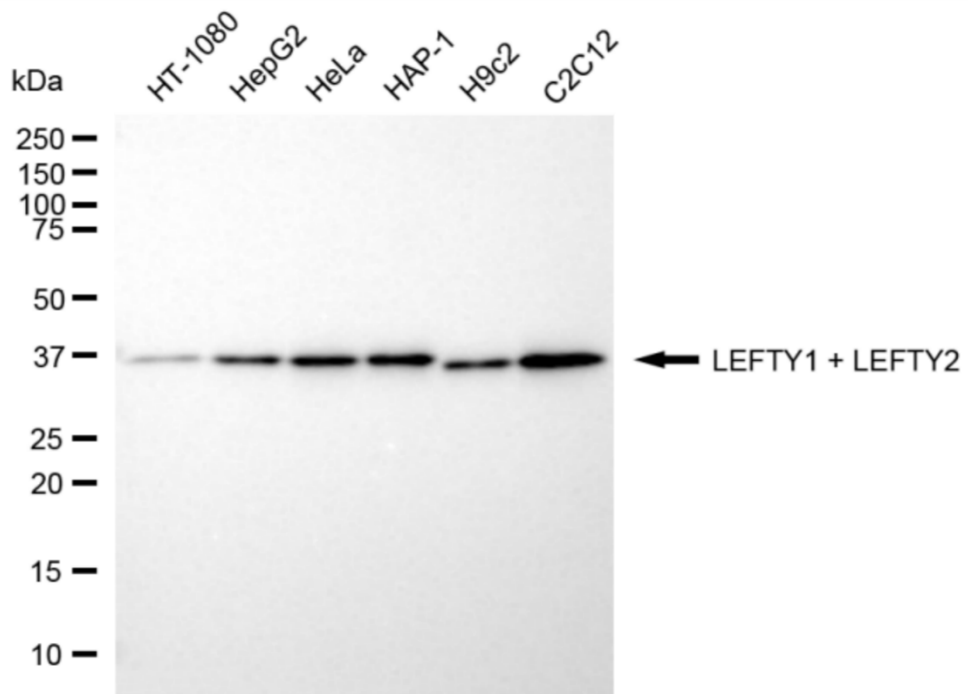
Store at -20 °C for one year.

Recommended Dilutions

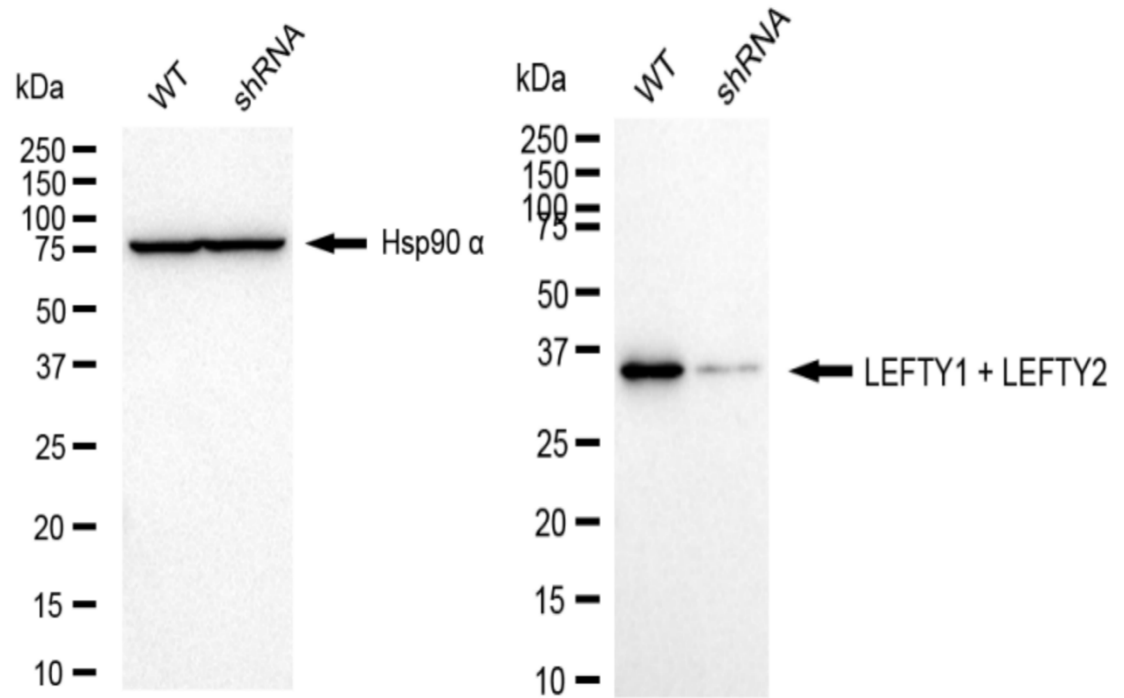
Western Blotting (WB): 1:1,000-1:5,000 Immunocytochemistry (IC): 1:1,000

Protocols

For general and specific antibody protocols please visit our website. Read all instructions before using this product.



Western blotting analysis using anti-LEFTY1 + LEFTY2 antibody 1:5,000 and HRP-conjugated goat anti-rabbit secondary antibody 1:20,000 respectively. Image was developed using FeQTM ECL Substrate Kit .



Western blotting analysis using anti-LEFTY1 + LEFTY2 antibody 1:5,000 and HRP-conjugated goat anti-rabbit secondary antibody 1:20,000 respectively. Image was developed using NaQTM ECL Substrate Kit 1:1,000. Nuclei were stained blue with DAPI; LEFTY1 + LEFTY2 was stained magenta with Alexa Fluor® 647. Images were taken using Leica stellaris 5. Protein abundance based on laser Intensity and smart gain: Low. Scale bar: 20 μ m.