



SunLong Biotech Co.,LTD  
Tel: 0086-571- 56623320 Fax:0086-571- 56623318  
E-mail:sales@sunlongbiotech.com  
www.sunlongbiotech.com

## **[KD-Validated] Anti-Linker For Activation Of T Cells Rabbit Monoclonal Antibody**

Cat No.: KD-10545

### **Aliases:**

LAT; Linker For Activation Of T Cells; LAT1; Linker For Activation Of T Cells,Transmembrane Adaptor; Linker For Activation Of T-Cells Family Member 1; 36 KDa Phosphotyrosine Adapter Protein; P36-38; Pp36; 36 KDa Phospho-Tyrosine Adapter Protein; 36 KDa Phospho-Tyrosine Adaptor Protein; IMD52

### **Background:**

UniProt Entry: [O43561](#);NCBI Gene Entry: [27040](#)

### **Application Information**

Molecular Weight: Predicted, 28 kDa, observed, 36 kDa Clonality: Rabbit monoclonal antibody Clone ID: 24GB4940 Species Reacnivity: Human Applctanions Tsed: Western Blotting (WB), Flow Cytometry (FCM)

### **Immunogen**

A synthesized peptide derived from human LAT

### **Isotype**

Rabbit IgG

### **Storage Buffer**

Supplied in PBS (pH 7.4) containing 50% glycerol, and 0.02% sodium azide.

### Storage

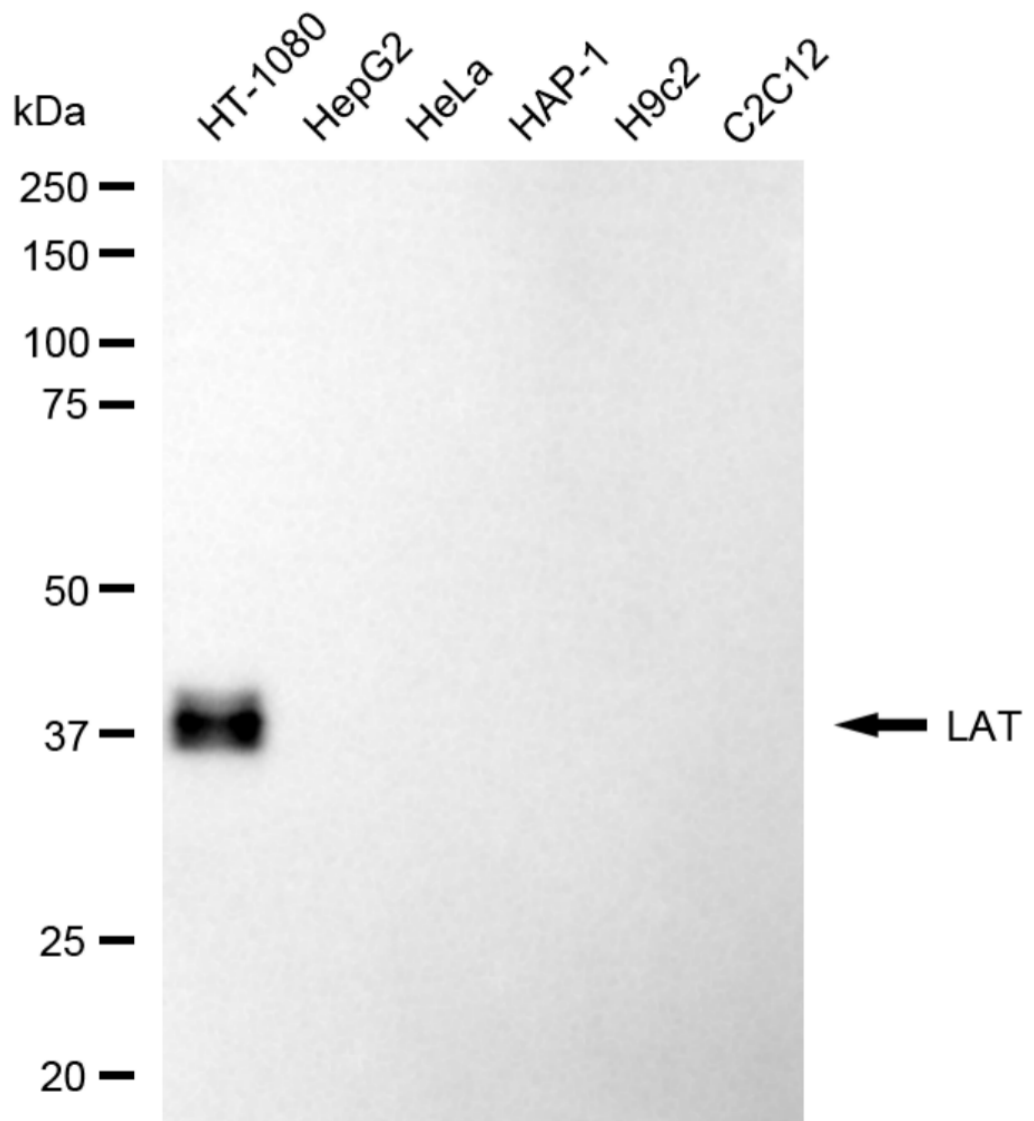
Store at -20 °C for one year.

### Recommended Dilutions

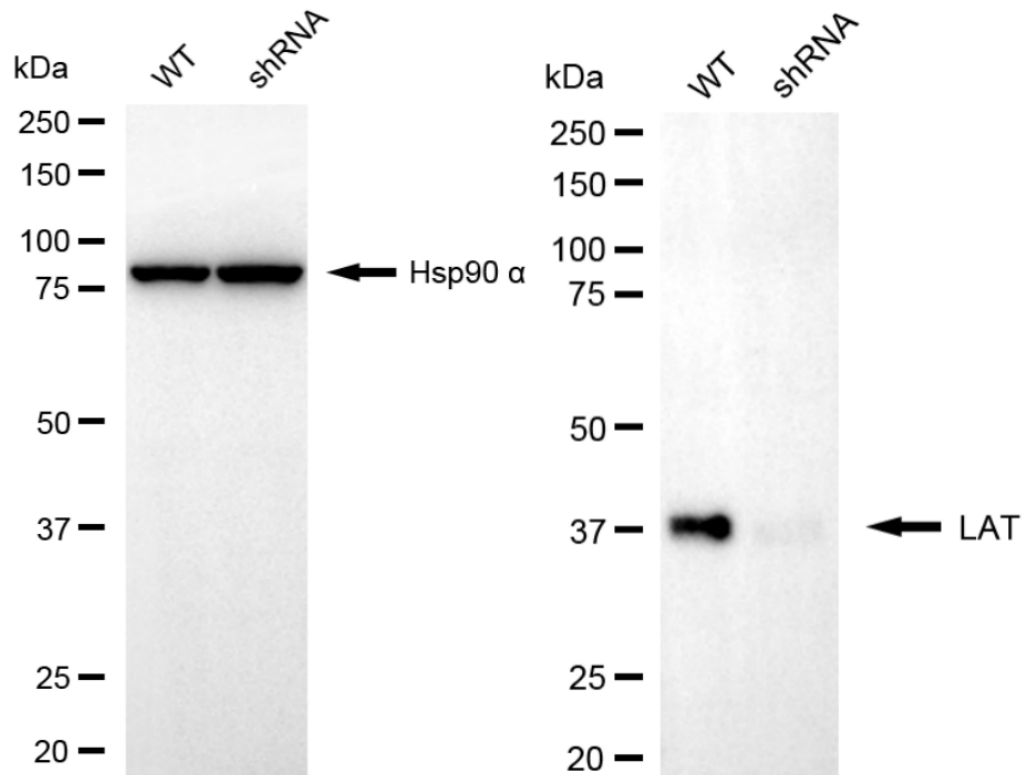
Western Blotting (WB): 1:1,000-1:5,000 Flow Cytometry (FCM): 1:2,000

### Protocols

For general and specific antibody protocols please visit our website. Read all instructions before using this product.



Western blotting analysis using anti-LAT antibody 1:5,000 and HRP-conjugated goat anti-rabbit secondary antibody 1:20,000 respectively. Image was developed using FeQ™ ECL Substrate Kit . LAT, linker for activation of T cells.



Western blotting analysis using anti-LAT antibody 1:5,000 and HRP-conjugated goat anti-rabbit secondary antibody 1:20,000 respectively. Image was developed using NaQ™ ECL Substrate Kit 1:2,000. Green, isotype control; red, LAT.