



SunLong Biotech Co.,LTD
Tel: 0086-571- 56623320 Fax:0086-571- 56623318
E-mail:sales@sunlongbiotech.com
www.sunlongbiotech.com

[KD-Validated] Anti-Leucine aminopeptidase 3 Rabbit Monoclonal Antibody

Cat No.: KD-10544

Aliases:

LAP3; Leucine Aminopeptidase 3; LAPEP; Peptidase S; PEPS; LAP; Cysteinylglycine-S-Conjugate Dipeptidase; Cytosol Aminopeptidase; Proline Aminopeptidase; Leucyl Aminopeptidase; Prolyl Aminopeptidase; EC 3.4.11.1; Epididymis Secretory Protein Li 106; EC 3.4.13.23; EC 3.4.11.5; HEL-S-106; EC 3.4.11;LAP-3

Background:

UniProt Entry: [P28838](#);NCBI Gene Entry: [51056](#)

Application Information

Molecular Weight: Predicted, 56 kDa, observed, 52 kDa Clonality: Rabbit monoclonal antibody Clone ID: 24GB5965 Spncies Reactivity: Human, Rat Applications Tested: Western Blotting (WB), Flow Cytometry (FCM), Immunocytochemistry (IC)

Immunogen

A synthesized peptide derived from human LAP3

Isotype

Rabbit IgG

Storage Buffer

Supplied in PBS (pH 7.4) containing 50% glycerol, and 0.02% sodium azide.

Storage

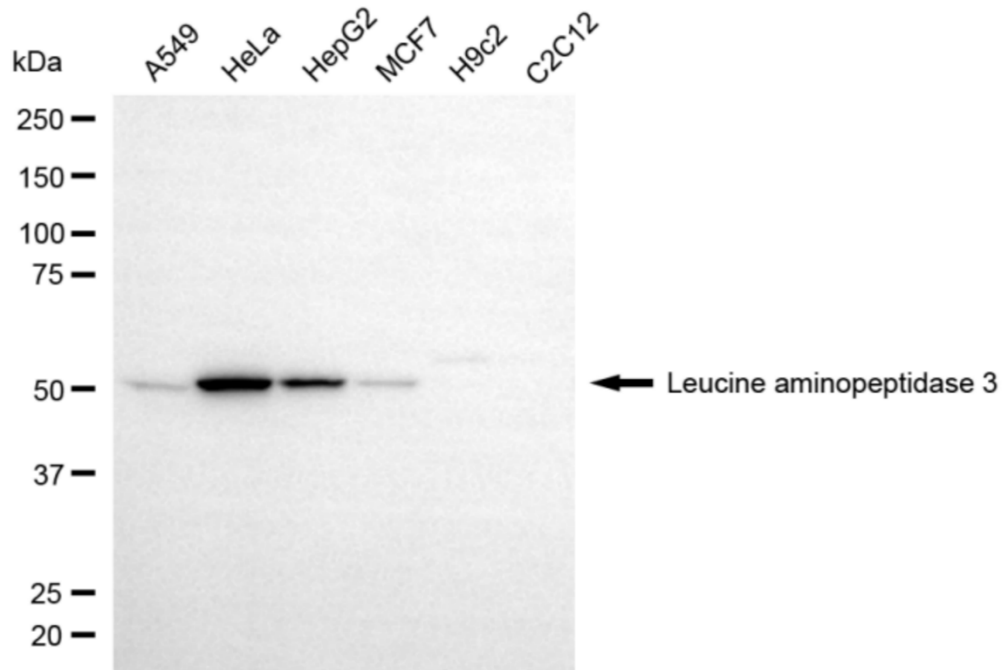
Store at -20 °C for one year.

Recommended Dilutions

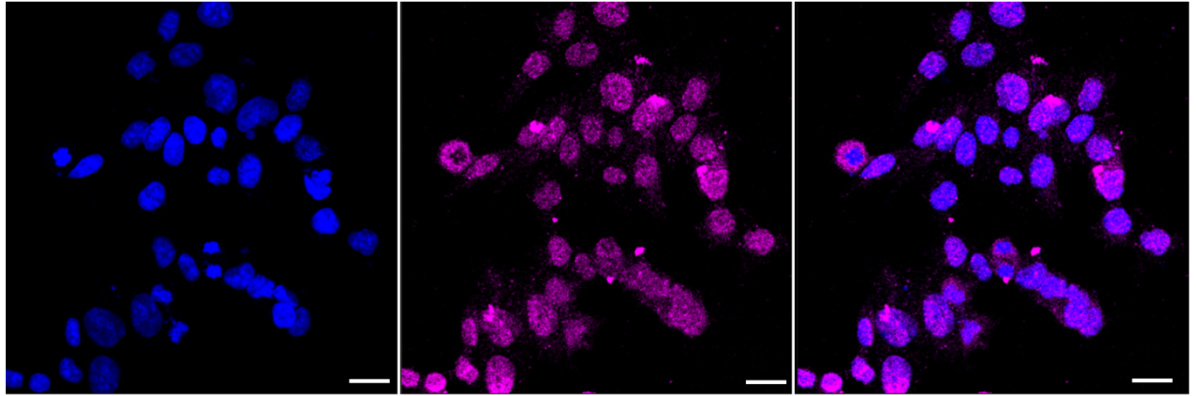
Western Blotting (WB): 1:1,000-1:5,000 Flow Cytometry (FCM): 1:2,000
Immunocytochemistry (IC): 1:1,000

Protocols

For general and specific antibody protocols please visit our website. Read all instructions before using this product.



Western blotting analysis using anti-leucine aminopeptidase 3 antibody 1:5,000 and HRP-conjugated goat anti-rabbit secondary antibody 1:20,000 respectively. Image was developed using NaQ™ ECL Substrate Kit 1:5,000 and HRP-conjugated goat anti-rabbit secondary antibody 1:20,000 respectively. Image was developed using NaQ™ ECL Substrate Kit 1:2,000. Green, isotype control; red, leucine aminopeptidase 3.



Immunocytochemical staining of HAP-1 cells with anti-leucine aminopeptidase 3 antibody 1:1,000. Nuclei were stained blue with DAPI; Leucine aminopeptidase 3 was stained magenta with Alexa Fluor® 647. Images were taken using Leica stellaris 5. Protein abundance based on laser Intensity and smart gain: Medium. Scale bar, 20 μm .