



SunLong Biotech Co.,LTD
Tel: 0086-571- 56623320 Fax:0086-571- 56623318
E-mail:sales@sunlongbiotech.com
www.sunlongbiotech.com

[KD-Validated] Anti-LAMP2 Rabbit Monoclonal Antibody

Cat No.: KD-10543

Aliases:

LAMP2; Lysosomal Associated Membrane Protein 2; Lysosome-Associated Membrane Glycoprotein; CD107 Antigen-Like Family Member B; CD107b; LAMP-2; LGP-96; Lysosomal-Associated Membrane Protein 2; Lysosome-Associated Membrane Protein 2; CD107b Antigen; LGP110; CD107B; LAMPB; DND

Background:

UniProt Entry: [P13473](#);NCBI Gene Entry: [3920](#)

Application Information

Molecular Weight: Predicted, 45 kDa, observed, 120 kDa Clonality: Rabbit monoclonal antibody Clone ID: 23GB4040 Species Reactivity: Human, Mouse, Rat Applications Tested: Western Blotting (WB), Flow Cytometry (FCM), Immunocytochemistry (IC)

Immunogen

A synthesized peptide derived from human LAMP2

Isotype

Rabbit IgG

Storage Buffer

Supplied in PBS (pH 7.4) containing 50% glycerol, and 0.02% sodium azide.

Storage

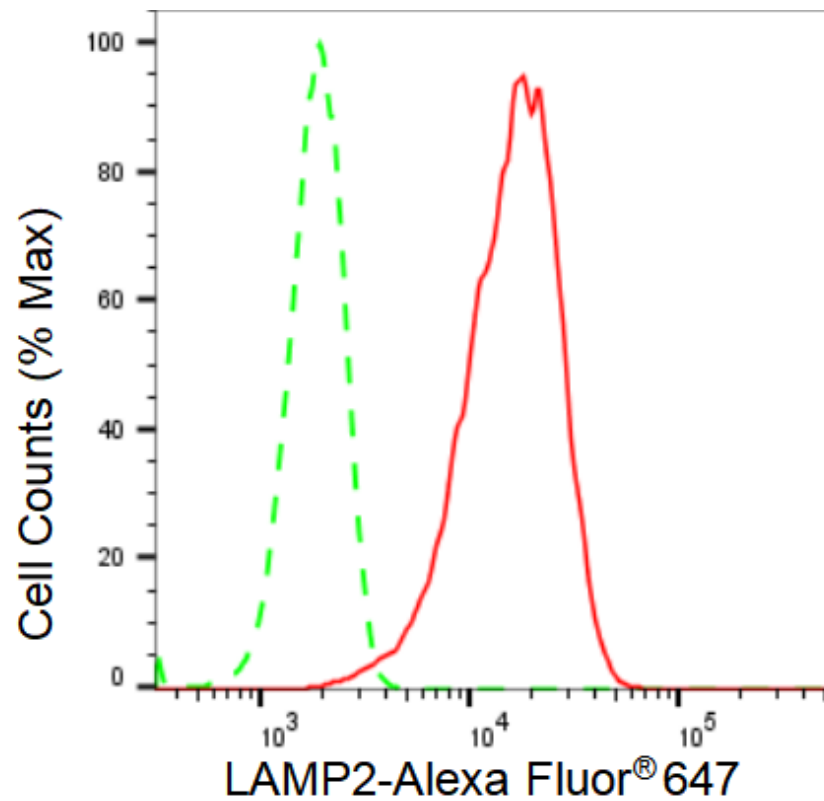
Store at -20 °C for one year.

Recommended Dilutions

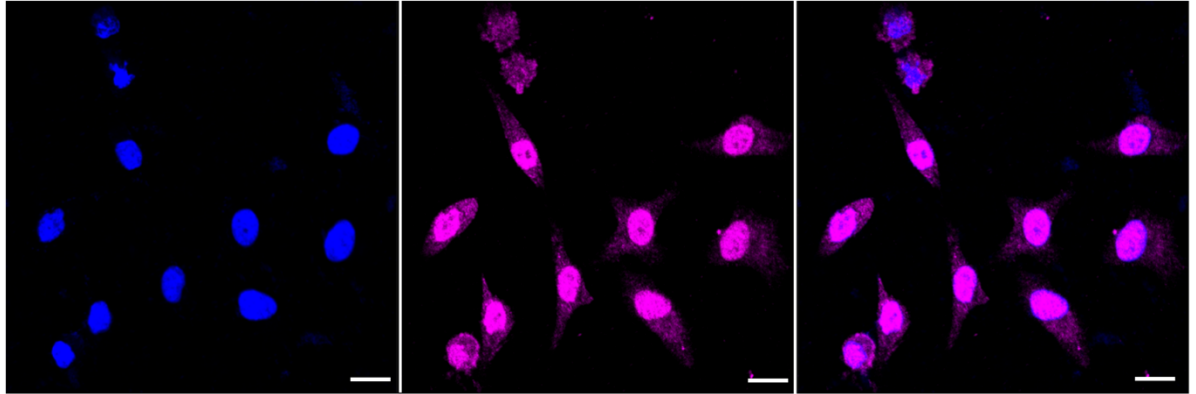
Western Blotting (WB): 1:1,000-1:5,000 Flow Cytometry (FCM): 1:2,000
Immunocytochemistry (IC): 1:1,000

Protocols

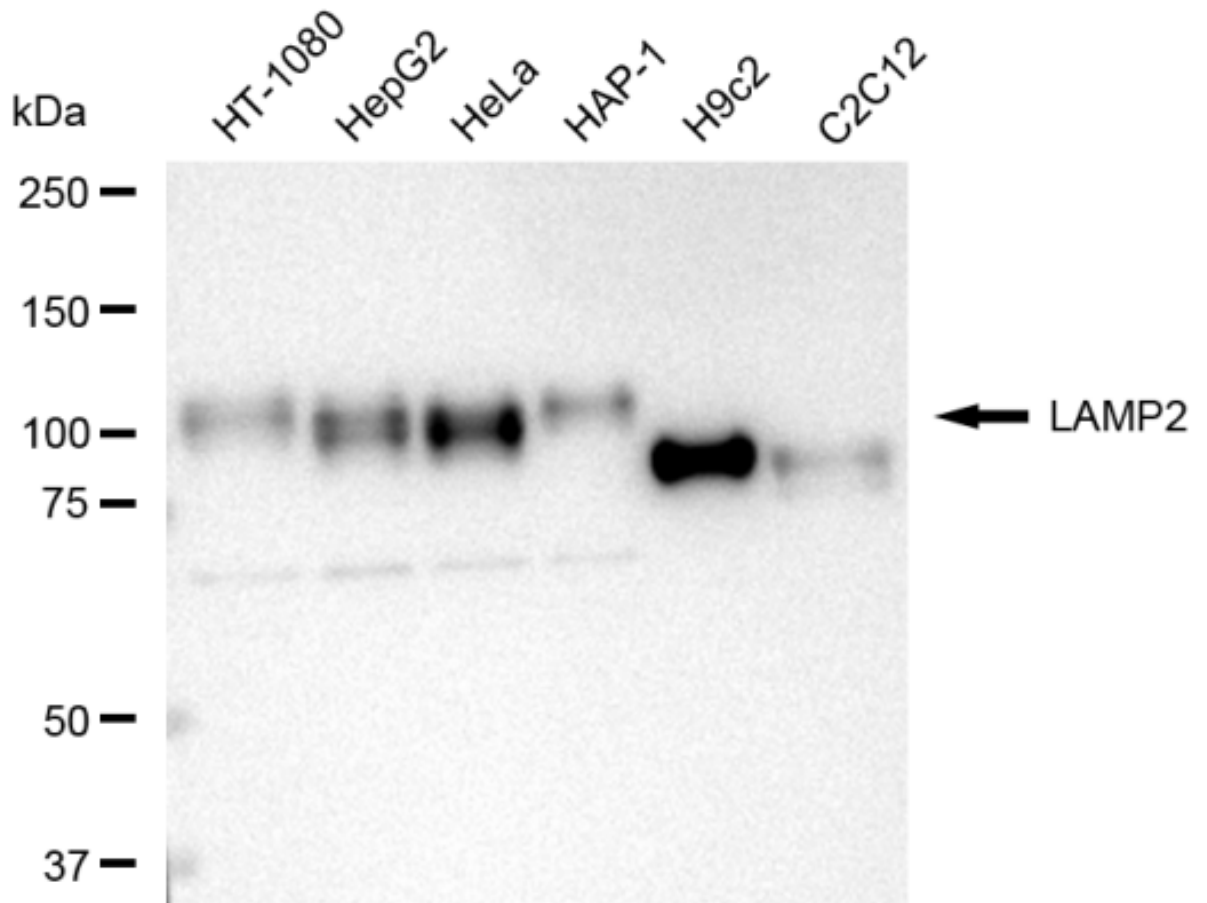
For general and specific antibody protocols please visit our website. Read all instructions before using this product.



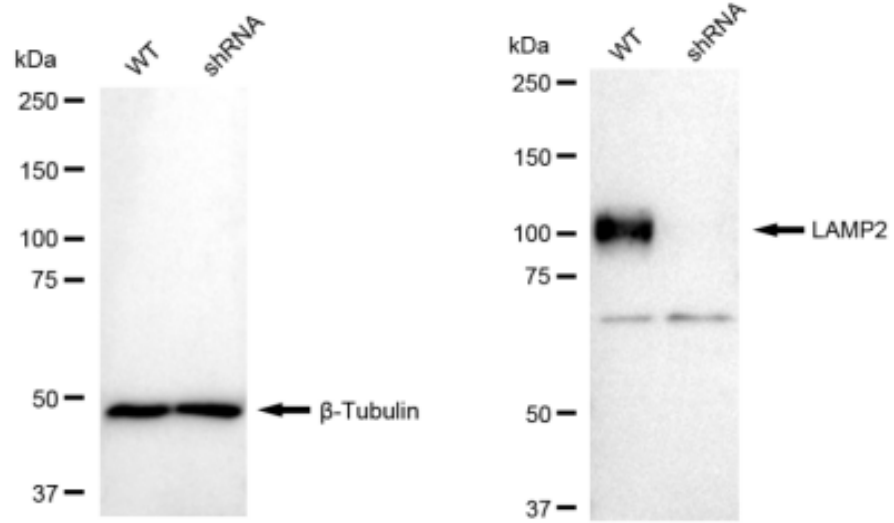
Flow cytometric analysis of LAMP2 expression in HeLa cells using LAMP2 antibody 1:2,000. Green, isotype control; red, LAMP2.



Immunocytochemical staining of HeLa cells with LAMP2 antibody 1:1,000. Nuclei were stained blue with DAPI; LAMP2 was stained magenta with Alexa Fluor® 647. Images were taken using Leica stellaris 5. Protein abundance based on laser Intensity and smart gain: Medium. Scale bar: 20 μ m.



Western blotting analysis using anti-LAMP2 antibody 1:5,000 and HRP-conjugated goat anti-rabbit secondary antibody 1:20,000 respectively. Image was developed using FeQ™ ECL Substrate Kit .



Western blotting analysis using anti-LAMP2 antibody 1:5,000 and HRP-conjugated goat anti-rabbit secondary antibody 1:20,000 respectively. Image was developed using FeQ™ ECL Substrate Kit .