



SunLong Biotech Co.,LTD  
Tel: 0086-571- 56623320 Fax:0086-571- 56623318  
E-mail:sales@sunlongbiotech.com  
www.sunlongbiotech.com

## **[KD-Validated] Anti-LAMP1 /CD107a Rabbit Monoclonal Antibody**

Cat No.: KD-10542

### **Aliases:**

CD107a; Lysosome-Associated Membrane Glycoprotein 1; Lysosome-Associated Membrane Protein 1; CD107 Antigen-Like Family Member A; LAMP-1; Lysosomal-Associated Membrane Protein 1; CD107a Antigen; LGP120; LAMPA

### **Background:**

UniProt Entry: [P11279](#);NCBI Gene Entry: [3916](#)

### **Application Information**

Molecular Weight: Predicted, 45 kDa, observed, 120 kDa Clonality: Rabbit monoclonal antibody Clone ID: 23GB760 Species Reactivity: Human Applications Used: Western Blotting (WB), Immunocytochemistry (IC)

### **Immunogen**

A synthesized peptide derived from human LAMP1

### **Isotype**

Rabbit IgG

### **Storage Buffer**

Supplied in PBS (pH 7.4) containing 50% glycerol, and 0.02% sodium azide.

### Storage

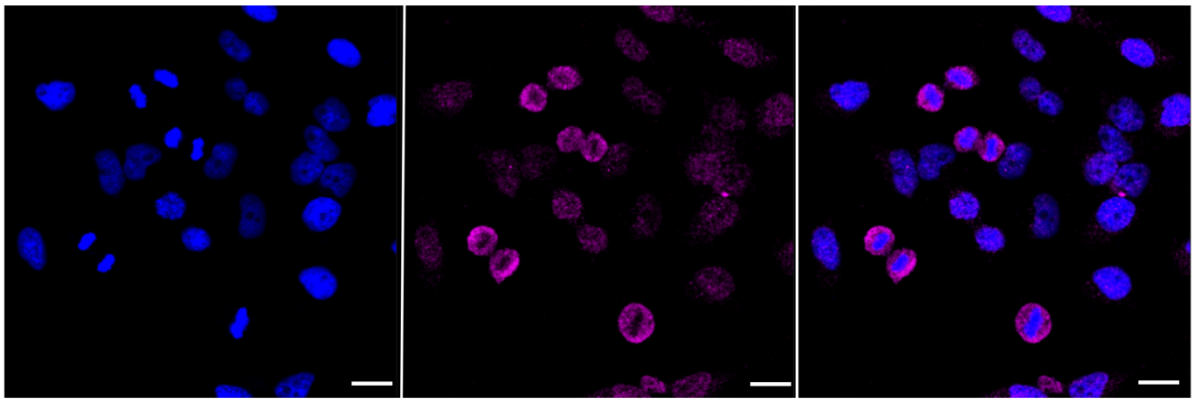
Store at -20 °C for one year.

### Recommended Dilutions

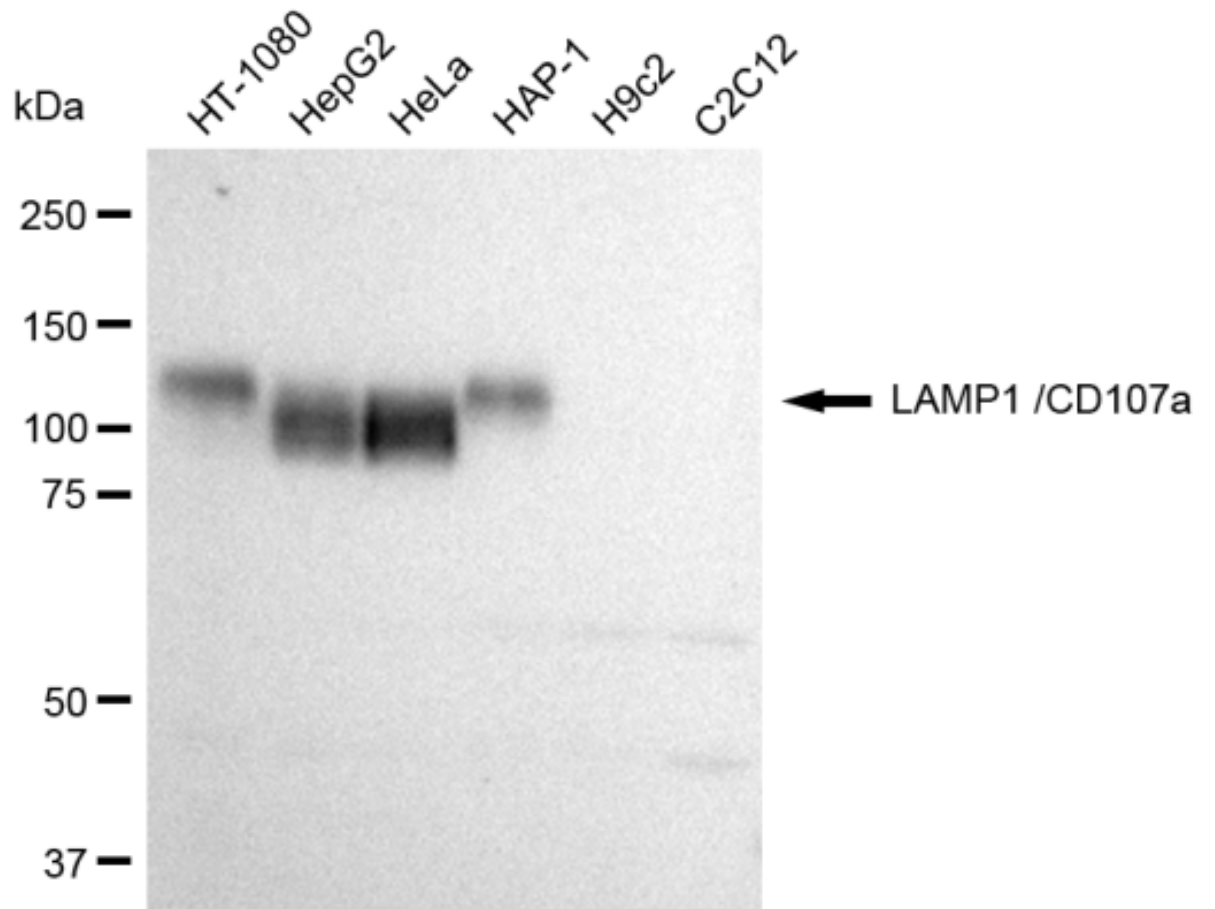
Western Blotting (WB): 1:1,000-1:5,000 Immunocytochemistry (IC): 1:1,000

### Protocols

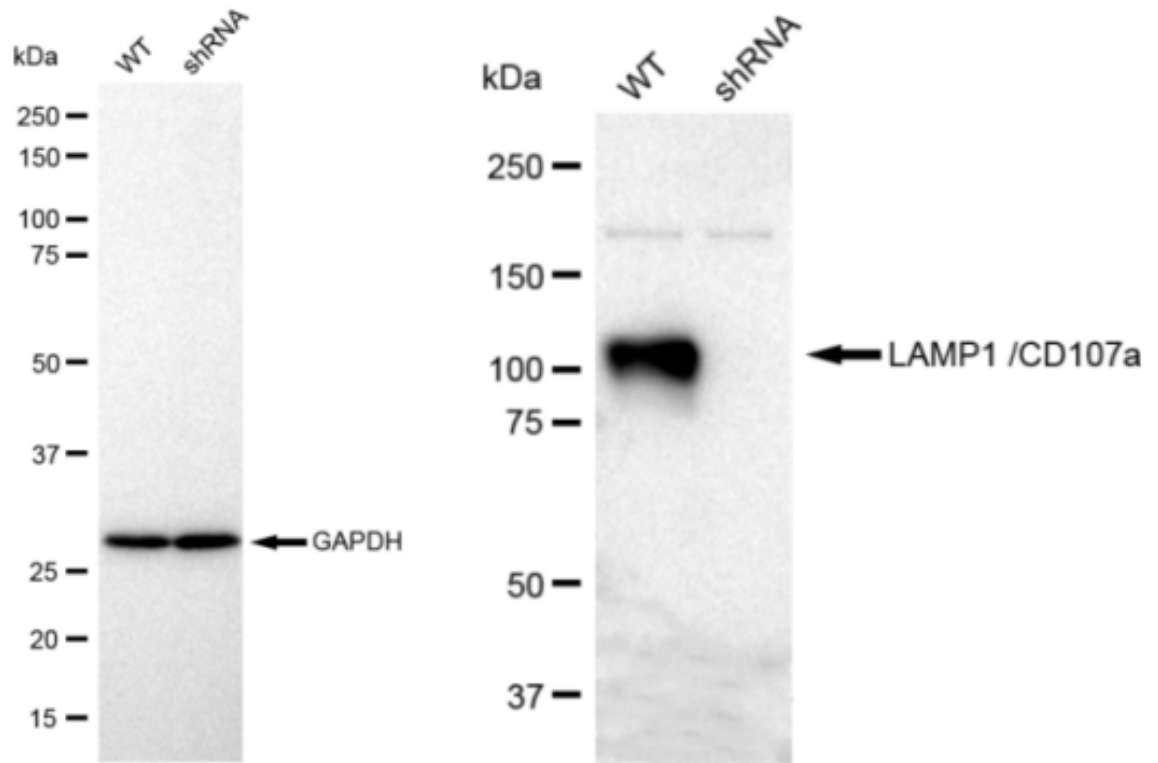
For general and specific antibody protocols please visit our website. Read all instructions before using this product.



Immunocytochemical staining of HeLa cells with LAMP1 /CD107a antibody 1:1,000. Nuclei were stained blue with DAPI; LAMP1 /CD107a was stained magenta with Alexa Fluor® 647. Images were taken using Leica stellaris 5. Protein abundance based on laser Intensity and smart gain: Low. Scale bar: 20  $\mu$ m.



Western blotting analysis using anti-LAMP1 /CD107a antibody 1:5,000 and HRP-conjugated goat anti-rabbit secondary antibody 1:20,000 respectively. Image was developed using FeQ™ ECL Substrate Kit .



Western blotting analysis using anti-LAMP1 /CD107a antibody 1:5,000 and HRP-conjugated goat anti-rabbit secondary antibody 1:50,000 respectively. Image was developed using FeQ™ ECL Substrate Kit .