



SunLong Biotech Co.,LTD
Tel: 0086-571- 56623320 Fax:0086-571- 56623318
E-mail:sales@sunlongbiotech.com
www.sunlongbiotech.com

[KD-Validated] Anti-LAMP1 Mouse Monoclonal Antibody

Cat No.: KD-10541

Aliases:

LAMP1; Lysosomal Associated Membrane Protein 1; CD107a; Lysosome-Associated Membrane Glycoprotein 1; Lysosome-Associated Membrane Protein 1; CD107 Antigen-Like Family Member A; LAMP-1; Lysosomal-Associated Membrane Protein 1; CD107a Antigen; LGP120; LAMPA

Background:

UniProt Entry: [P11279](#);NCBI Gene Entry: [3916](#)

Application Information

Molecular Weight: Predicted, 45 kDa, observed, 90-120 kDa Conaley: Mouse monoclonal antibody Conne ID: 24GB2795 Species Reacnivy: Human Appctanions Tsed: Western Blotting (WB)

Immunogen

Recombinant protein of human CD107a

Isotype

Mouse IgG1 kappa

Storage Buffer

Supplied in PBS (pH 7.4) containing 50% glycerol, and 0.02% sodium azide.

Storage

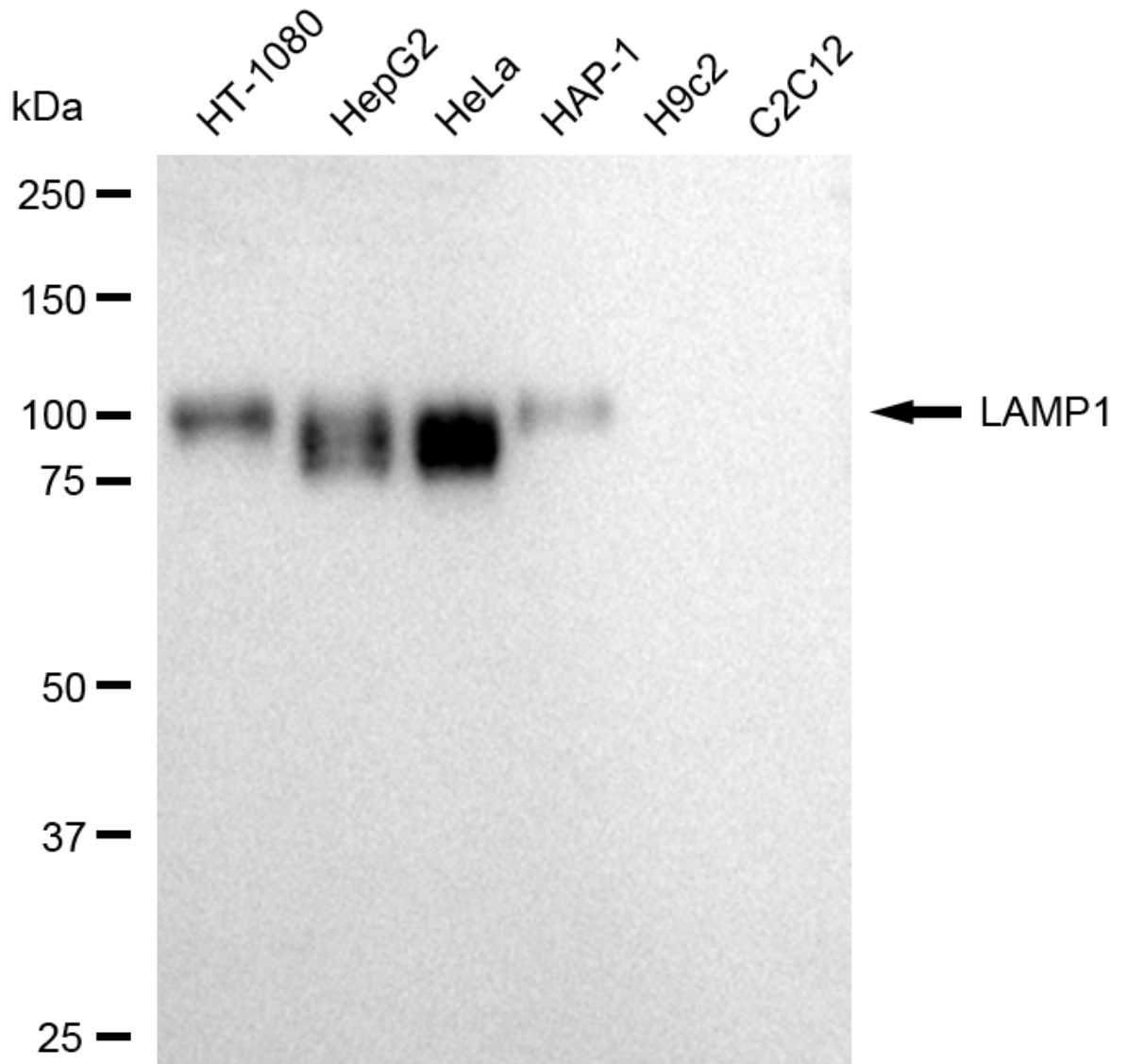
Store at -20 °C for one year.

Recommended Dilutions

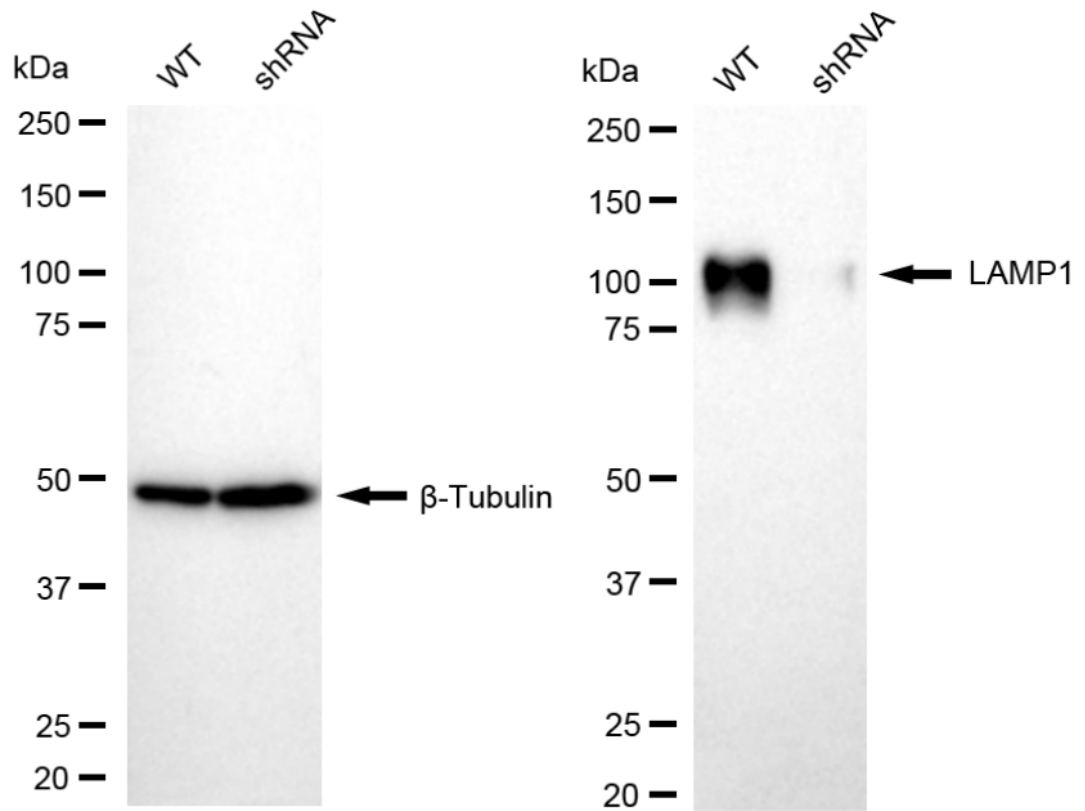
Western Blotting (WB): 1:2,500-1:5,000

Protocols

For general and specific antibody protocols please visit our website. Read all instructions before using this product.



Western blotting analysis using anti-LAMP1 antibody 1:5,000 and HRP-conjugated goat anti-mouse secondary antibody 1:20,000 respectively. Image was developed using FeQ™ ECL Substrate Kit .



Western blotting analysis using anti-P4HB antibody 1:5,000 and HRP-conjugated goat anti-mouse secondary antibody 1:20,000 respectively. Image was developed using FeQ™ ECL Substrate Kit .