



SunLong Biotech Co.,LTD
Tel: 0086-571- 56623320 Fax:0086-571- 56623318
E-mail:sales@sunlongbiotech.com
www.sunlongbiotech.com

[KD-Validated] Anti-Laminin gamma 1 Rabbit Monoclonal Antibody

Cat No.: KD-10539

Aliases:

LAMC1; Laminin Subunit Gamma 1; Laminin B2 Chain; LAMB2; Laminin, Gamma 1 (Formerly LAMB2); Laminin-10 Subunit Gamma; Laminin-11 Subunit Gamma; Laminin Subunit Gamma-1; S-Laminin Subunit Gamma; Laminin-2 Subunit Gamma; Laminin-3 Subunit Gamma; Laminin-4 Subunit Gamma; Laminin-6 Subunit Gamma; Laminin-7 Subunit Gamma; Laminin-8 Subunit Gamma; Laminin-9 Subunit Gamma; S-LAM Gamma; Laminin-1 Subunit Gamma

Background:

UniProt Entry: [P11047](#);NCBI Gene Entry: [3915](#)

Application Information

Molecular Weight: Predicted, 178 kDa, observed, 220-250 kDa Clonality: Rabbit monoclonal antibody Clone ID: 24GB5925 Species Reactivity: Human Applctanions Tsed: Western Blotting (WB), Flow Cytometry (FCM)

Immunogen

A synthesized peptide derived from human Laminin gamma 1

Isotype

Rabbit IgG

Storage Buffer

Supplied in PBS (pH 7.4) containing 50% glycerol, and 0.02% sodium azide.

Storage

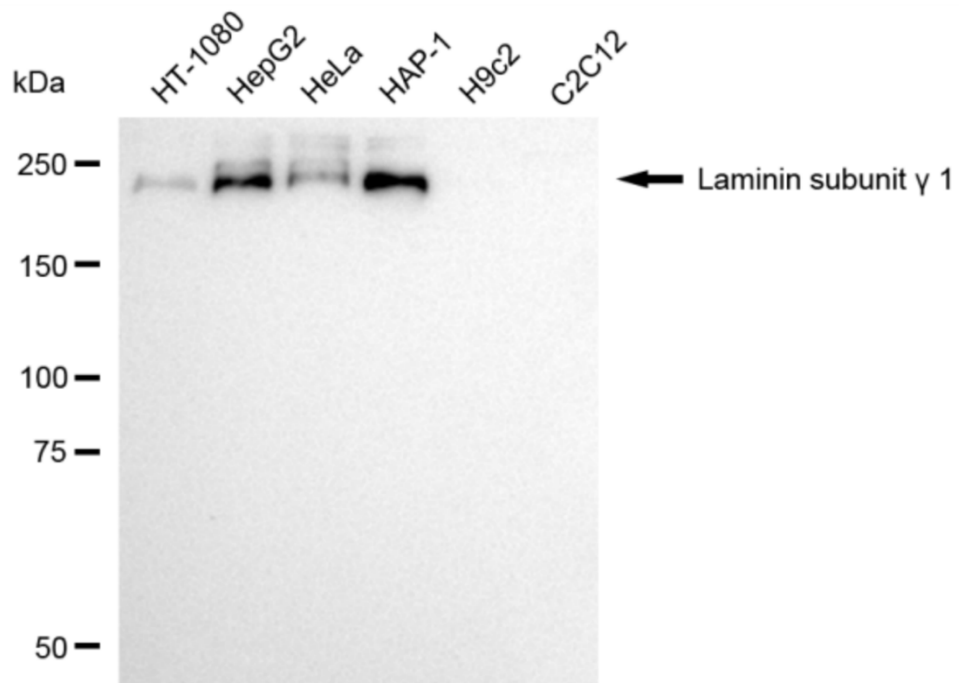
Store at -20 °C for one year.

Recommended Dilutions

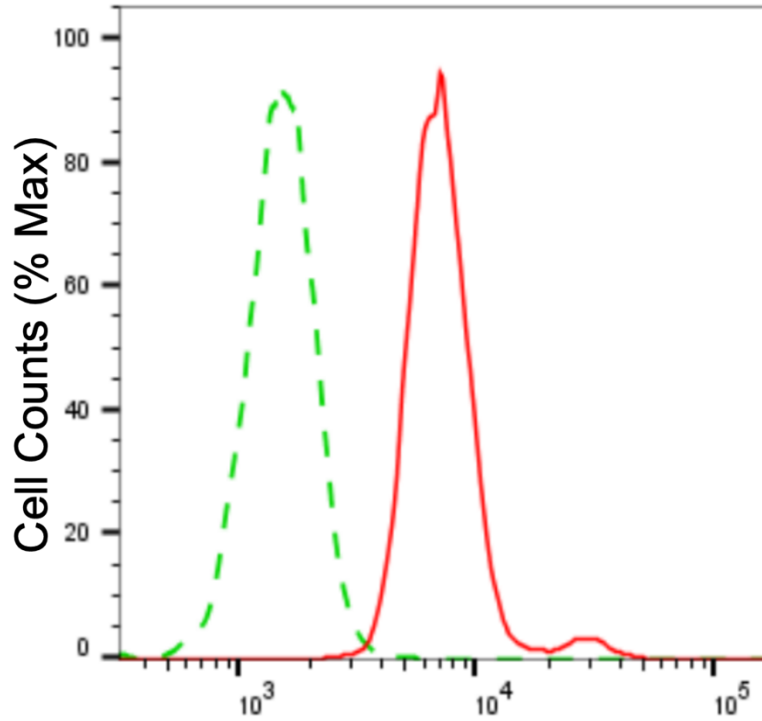
Western Blotting (WB): 1:1,000-1:5,000 Flow Cytometry (FCM): 1:2,000

Protocols

For general and specific antibody protocols please visit our website. Read all instructions before using this product.



Western blotting analysis using anti-laminin subunit gamma 1 antibody 1:5,000 and HRP-conjugated goat anti-rabbit secondary antibody 1:20,000 respectively. Image was developed using NaQ™ ECL Substrate Kit 1:5,000 and HRP-conjugated goat anti-rabbit secondary antibody 1:20,000 respectively. Image was developed using NaQ™ ECL Substrate Kit 1:1,000. Nuclei were stained blue with DAPI; Laminin subunit gamma 1 was stained magenta with Alexa Fluor® 647. Images were taken using Leica stellaris 5. Protein abundance based on laser Intensity and smart gain: Medium. Scale bar: 20 µm.



Laminin subunit gamma 1-Alexa Fluor[®] 647

Flow cytometric analysis of laminin subunit gamma 1 expression in HAP-1 cells using anti-laminin subunit gamma 1 antibody 1:2,000. Green, isotype control; red, laminin subunit gamma 1.