



SunLong Biotech Co.,LTD  
Tel: 0086-571- 56623320 Fax:0086-571- 56623318  
E-mail:sales@sunlongbiotech.com  
www.sunlongbiotech.com

## **[KD-Validated] Anti-Keratin 7 Rabbit Monoclonal Antibody**

Cat No.: KD-10537

### **Aliases:**

Keratin 7; CK-7; SCL; K7; Keratin, Type II Cytoskeletal 7; Sarcolectin 2; K2C7 2; CK7 2; Keratin, 55K Type II; Cytoskeletal; Type-II Keratin Kb7; Keratin 7, Type II; Cytokeratin 7; Keratin, Simple Epithelial Type I, K7; Type II Mesothelial Keratin K7; Cytokeratin-7; Keratin-7

### **Background:**

UniProt Entry: [P08729](#);NCBI Gene Entry: [3855](#)

### **Application Information**

Molecular Weight: Predicted, 54 kDa, observed, 51 kDa Clonality: Rabbit monoclonal antibody Clone ID: 23GB2915 Species Reactivity: Human Applications Used: Western Blotting (WB), Flow Cytometry (FCM), Immunocytochemistry (IC)

### **Immunogen**

A synthesized peptide derived from human Cytokeratin 7

### **Isotype**

Rabbit IgG

### **Storage Buffer**

Supplied in PBS (pH 7.4) containing 50% glycerol, and 0.02% sodium azide.

### Storage

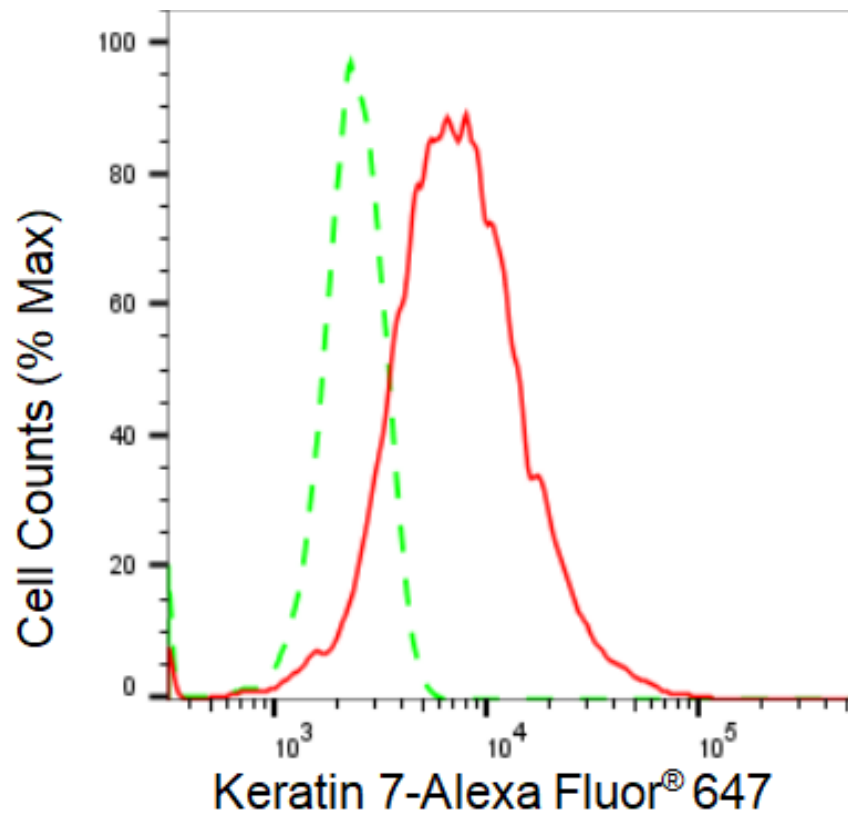
Store at -20 °C for one year.

### Recommended Dilutions

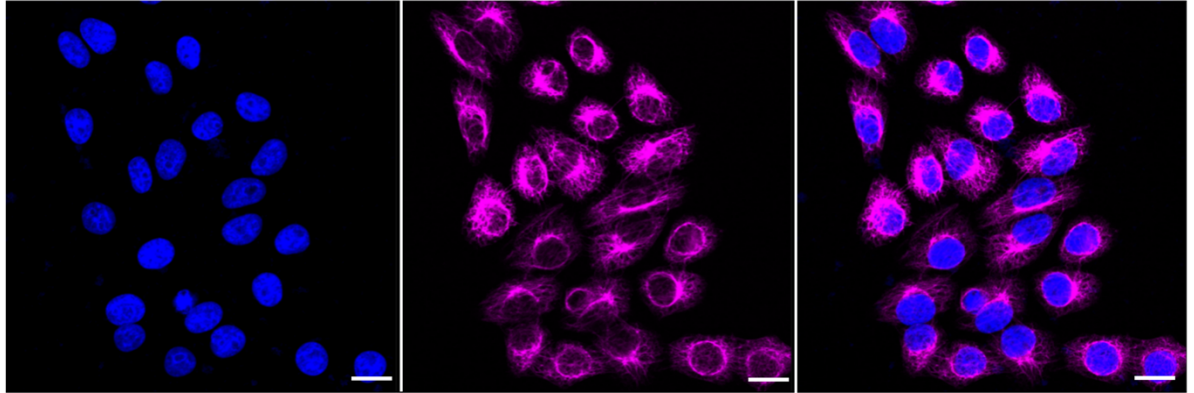
Western Blotting (WB): 1:1,000-1:10,000 Flow Cytometry (FCM): 1:2,000  
Immunocytochemistry (IC): 1:1,000

### Protocols

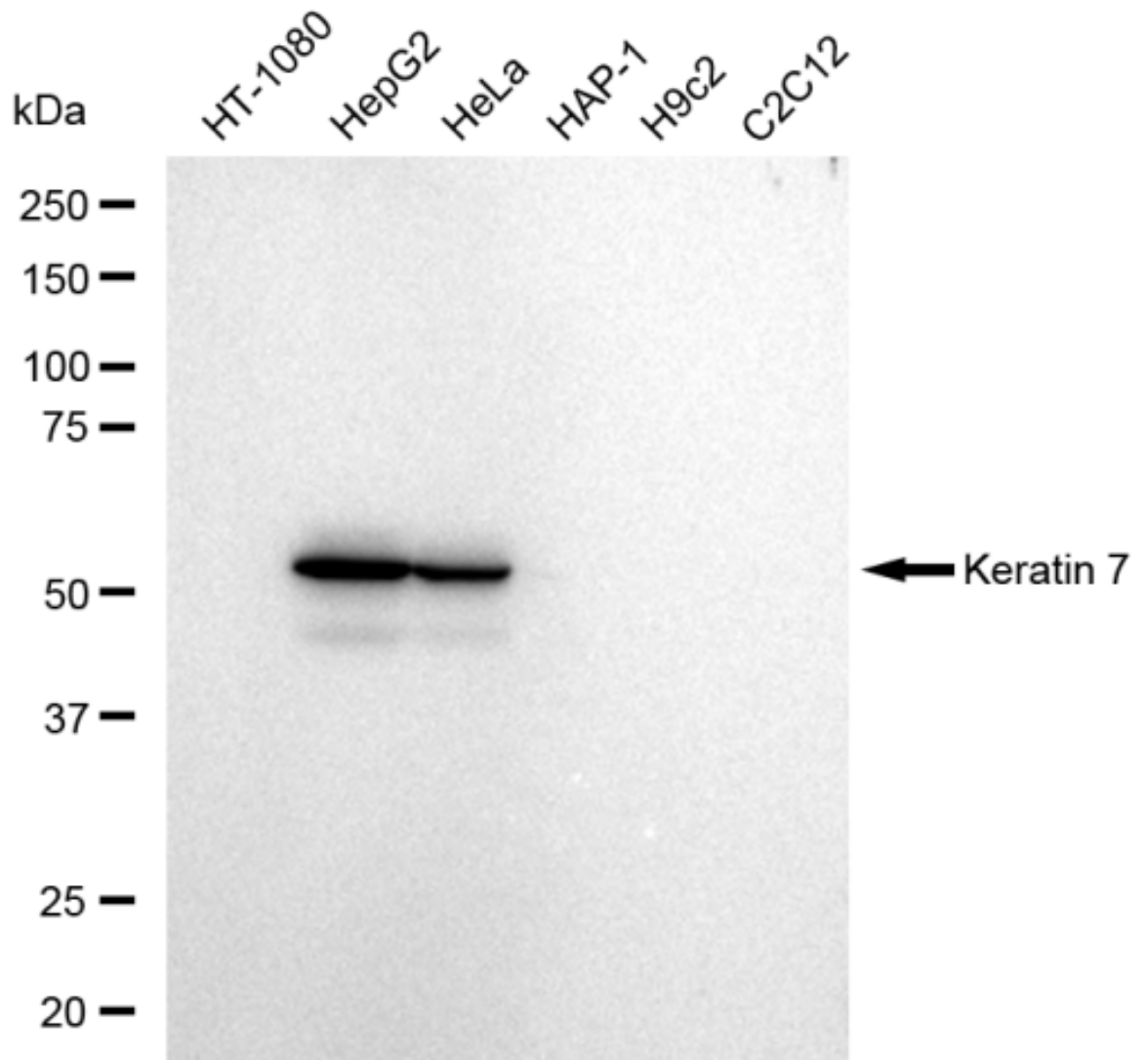
For general and specific antibody protocols please visit our website. Read all instructions before using this product.



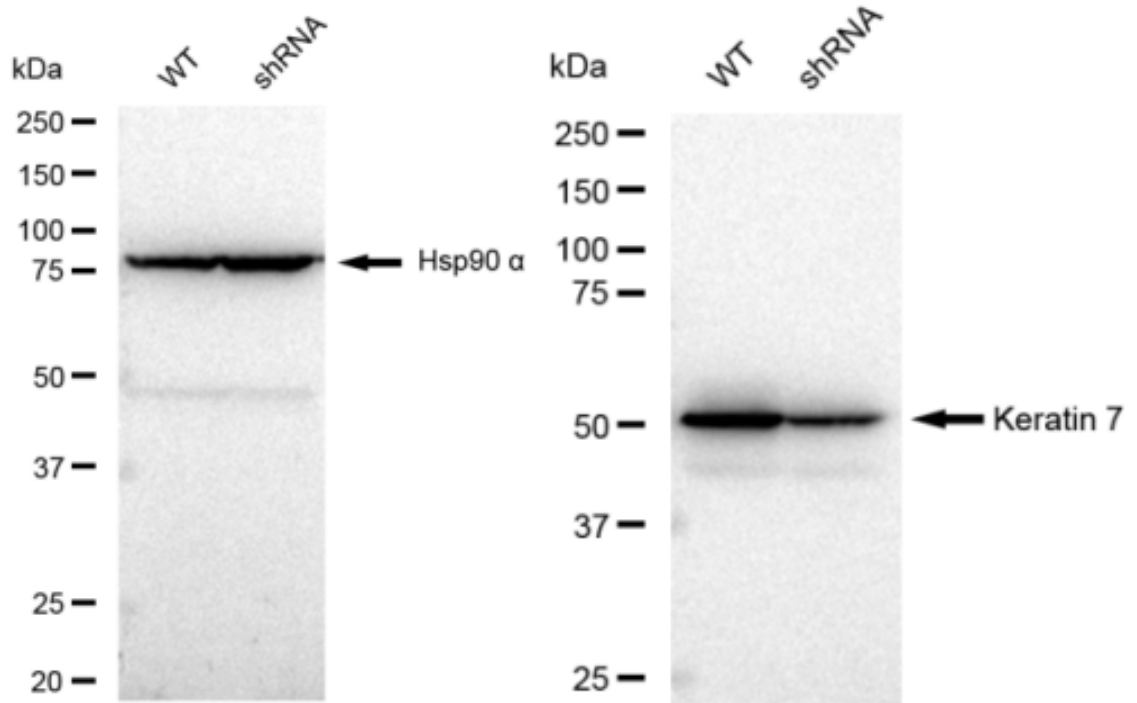
Flow cytometric analysis of Keratin 7 expression in HepG2 cells using Keratin 7 antibody 1:2,000. Green, isotype control; red, Keratin 7.



Immunocytochemical staining of HepG2 cells with Keratin 7 antibody 1:1,000. Nuclei were stained blue with DAPI; Keratin 7 was stained magenta with Alexa Fluor® 647. Images were taken using Leica stellaris 5. Protein abundance based on laser Intensity and smart gain: High. Scale bar: 20  $\mu$ m.



Western blotting analysis using anti-Keratin 7 antibody 1:10,000 and HRP-conjugated goat anti-rabbit secondary antibody 1:20,000 respectively. Image was developed using FeQ™ ECL Substrate Kit .



Western blotting analysis using anti-Keratin 7 antibody 1:5,000 and HRP-conjugated goat anti-rabbit secondary antibody 1:20,000 respectively. Image was developed using FeQ™ ECL Substrate Kit .