



SunLong Biotech Co.,LTD
Tel: 0086-571- 56623320 Fax:0086-571- 56623318
E-mail:sales@sunlongbiotech.com
www.sunlongbiotech.com

[KD-Validated] Anti-Keratin 10 Rabbit Monoclonal Antibody

Cat No.: KD-10534

Aliases:

KRT10; Keratin 10; K10; CK10; KPP; Keratin, Type I Cytoskeletal 10; Keratin 10, Type I; Cytokeratin 10; CK-10; Keratosis Palmaris Et Plantaris; Epidermolytic Hyperkeratosis; Cytokeratin-10; Keratin-10; BCIE; EHK2; BIE; EHK; IHL

Background:

UniProt Entry: [P13645](#);NCBI Gene Entry: [3858](#)

Application Information

Molecular Weight: Predicted, 59 kDa, observed, 60 kDa Clonality: Rabbit monoclonal antibody Clone ID: 23GB6105 Spncies Reactivity: Human, Rat Applications Tested: Western Blotting (WB)

Immunogen

A synthesized peptide derived from human Cytokeratin 10

Isotype

Rabbit IgG

Storage Buffer

Supplied in PBS (pH 7.4) containing 50% glycerol, and 0.02% sodium azide.

Storage

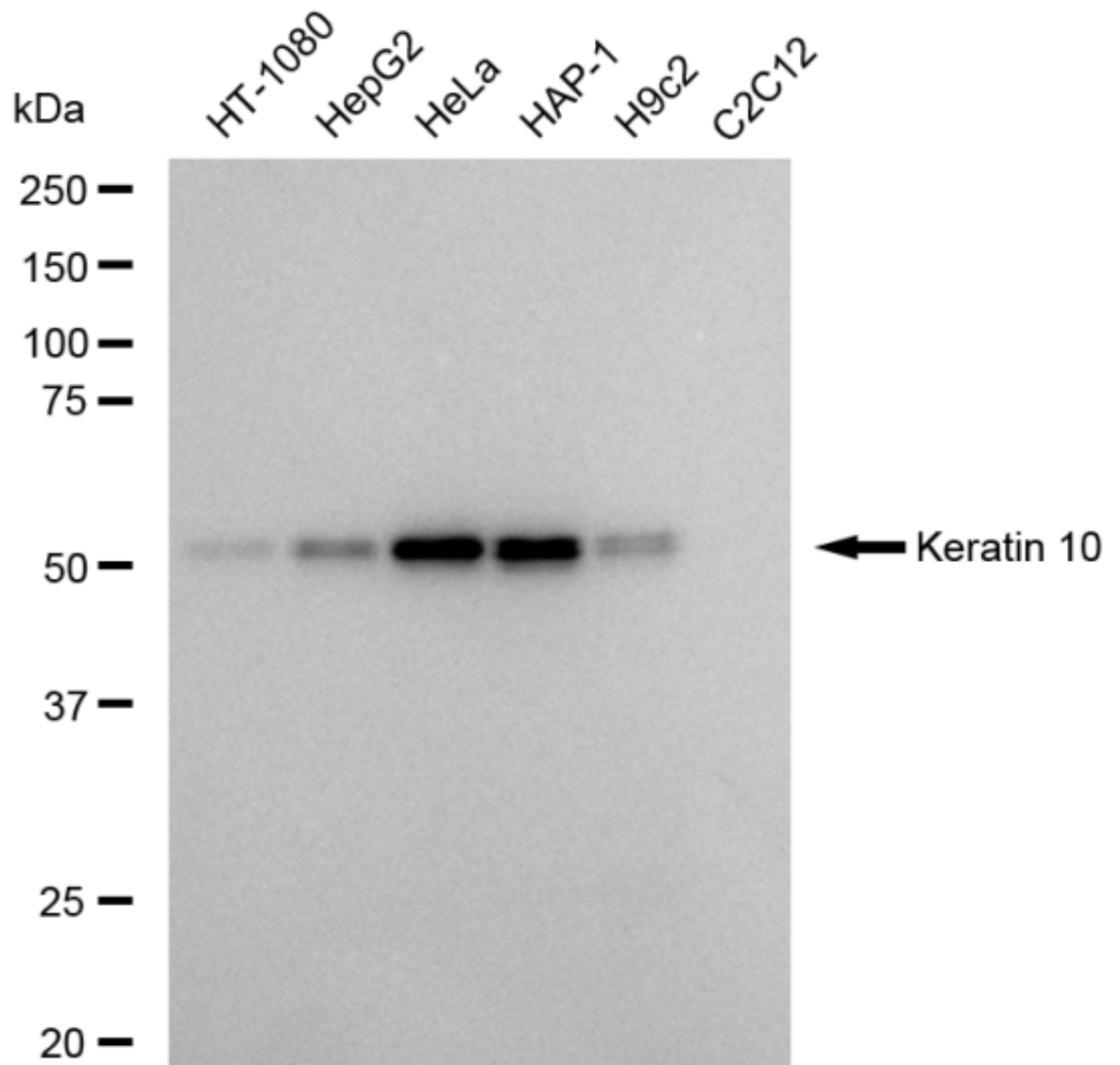
Store at -20 °C for one year.

Recommended Dilutions

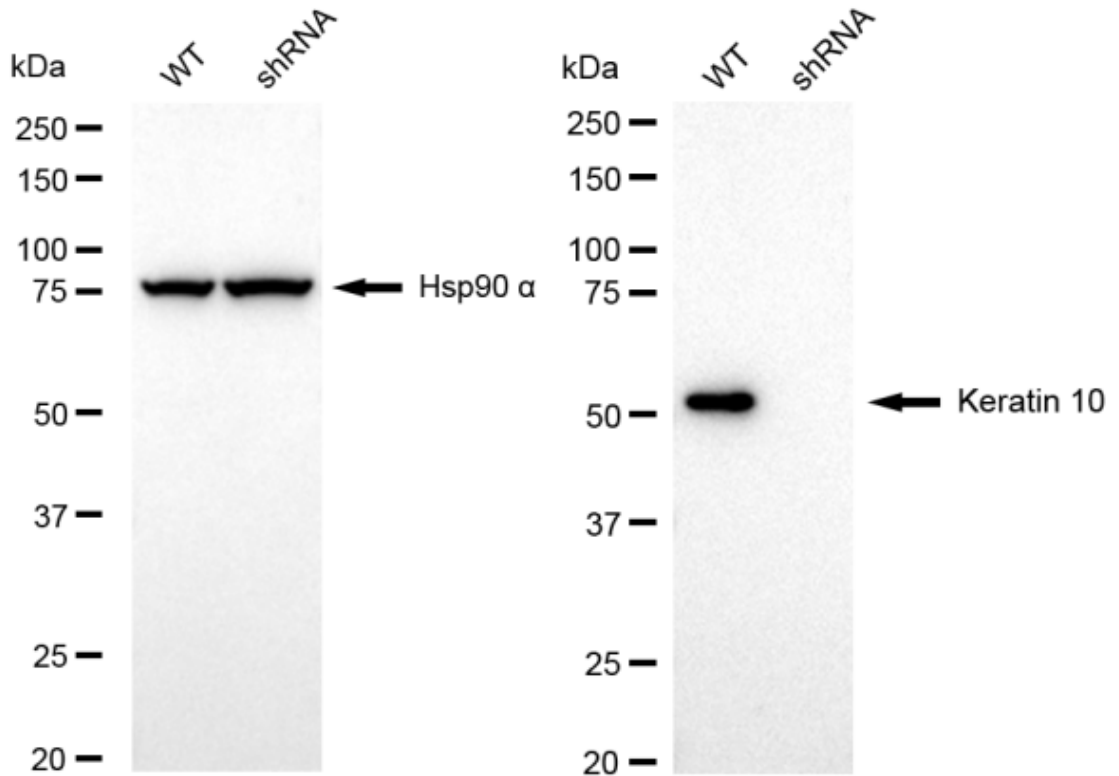
Western Blotting (WB): 1:1,000-1:5,000

Protocols

For general and specific antibody protocols please visit our website. Read all instructions before using this product.



Western blotting analysis using anti-Keratin 10 antibody 1:5,000 and HRP-conjugated goat anti-rabbit secondary antibody 1:20,000 respectively. Image was developed using FeQ™ ECL Substrate Kit .



Western blotting analysis using anti-Keratin 10 antibody 1:5,000 and HRP-conjugated goat anti-rabbit secondary antibody 1:20,000 respectively. Image was developed using NaQ™ ECL Substrate Kit .