



SunLong Biotech Co.,LTD
Tel: 0086-571- 56623320 Fax:0086-571- 56623318
E-mail:sales@sunlongbiotech.com
www.sunlongbiotech.com

[KD-Validated] Anti-Kinesin light chain 1 Rabbit Monoclonal Antibody

Cat No.: KD-10532

Aliases:

KLC1; Kinesin Light Chain 1; KLC; KNS2A; KNS2; Kinesin 2 60/70kDa; HKLC1S;
HKLC1N; HKLC1P; HKLC1G; HKLC1R; HKLC1J; HKLC1B; Medulloblastoma
Antigen MU-MB-2.50; Kinesin 2; KLC

Background:

UniProt Entry: [Q07866](#);NCBI Gene Entry: [3831](#)

Application Information

Molecular Weight: Predicted, 65 kDa, observed, 65 kDa Clonality: Rabbit monoclonal
antibody Clone ID: 24GB6030 Species Reactivity: Human, Mouse, Rat Applications
Tested: Western Blotting (WB), Flow Cytometry (FCM), Immunocytochemistry (IC)

Immunogen

A synthesized peptide derived from human KLC1

Isotype

Rabbit IgG

Storage Buffer

Supplied in PBS (pH 7.4) containing 50% glycerol, and 0.02% sodium azide.

Storage

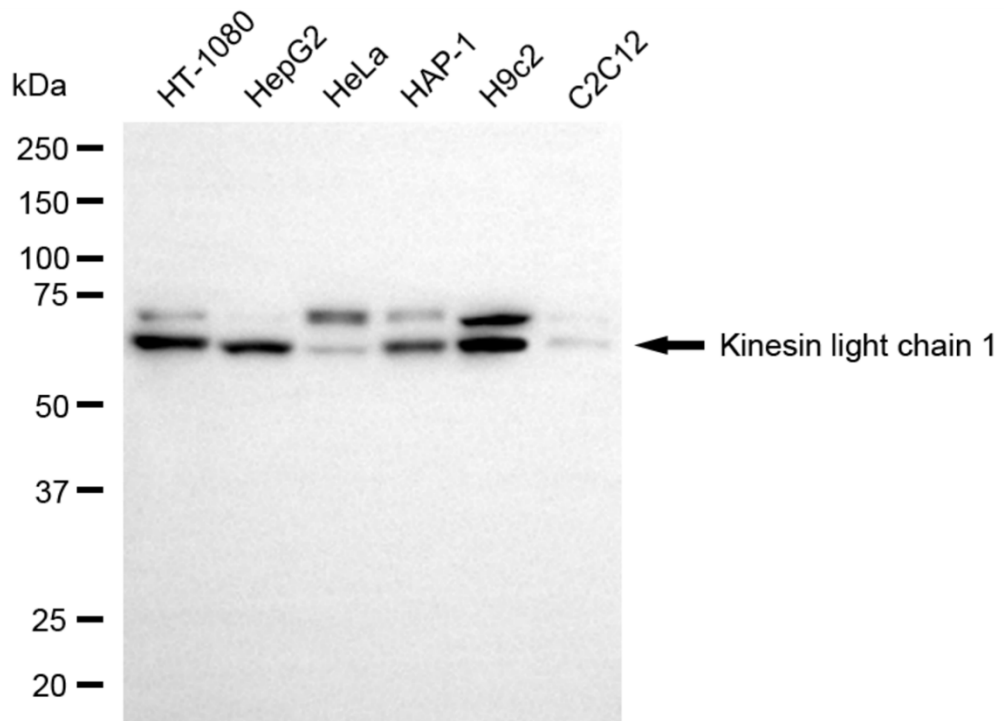
Store at -20 °C for one year.

Recommended Dilutions

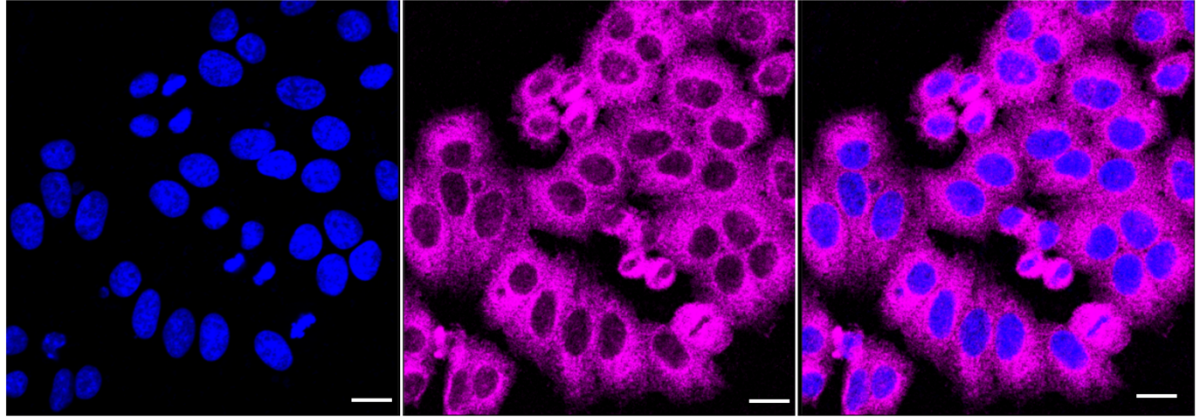
Western Blotting (WB): 1:1,000-1:5,000 Flow Cytometry (FCM): 1:2,000
Immunocytochemistry (IC): 1:1,000

Protocols

For general and specific antibody protocols please visit our website. Read all instructions before using this product.



Western blotting analysis using anti-kinesin light chain 1 antibody 1:5,000 and HRP-conjugated goat anti-rabbit secondary antibody 1:20,000 respectively. Image was developed using NaQ™ ECL Substrate Kit 1:5,000 and HRP-conjugated goat anti-rabbit secondary antibody 1:20,000 respectively. Image was developed using NaQ™ ECL Substrate Kit 1:2,000. Green, isotype control; red, kinesin light chain 1.



Immunocytochemical staining of HepG2 cells with anti-kinesin light chain 1 antibody 1:1,000. Nuclei were stained blue with DAPI; Kinesin light chain 1 was stained magenta with Alexa Fluor® 647. Images were taken using Leica stellaris 5. Protein abundance based on laser Intensity and smart gain: Medium. Scale bar: 20 μm .