



SunLong Biotech Co.,LTD  
Tel: 0086-571- 56623320 Fax:0086-571- 56623318  
E-mail:sales@sunlongbiotech.com  
www.sunlongbiotech.com

## **[KD-Validated] Anti-Kinesin family member 4A Rabbit Monoclonal Antibody**

Cat No.: KD-10530

### **Aliases:**

KIF4A; Kinesin Family Member 4A; KIF4; MRX100; Chromosome-Associated Kinesin KIF4A; Chromokinesin KIF4A; Chromokinesin-A; HSA271784; FLJ12530; FLJ12655; FLJ14204; FLJ20631; KIF4-G1; XLID100; KIF4G1; TMDI

### **Background:**

UniProt Entry: [O95239](#);NCBI Gene Entry: [24137](#)

### **Application Information**

Molecular Weight: Predicted, 140 kDa, observed, 150 kDa Clonality: Rabbit monoclonal antibody Clone ID: 24GB6025 Species Reactivity: Human, Mouse, Rat Applications Tested: Western Blotting (WB), Flow Cytometry (FCM), Immunocytochemistry (IC)

### **Immunogen**

A synthesized peptide derived from human KIF4A

### **Isotype**

Rabbit IgG

### **Storage Buffer**

Supplied in PBS (pH 7.4) containing 50% glycerol, and 0.02% sodium azide.

### Storage

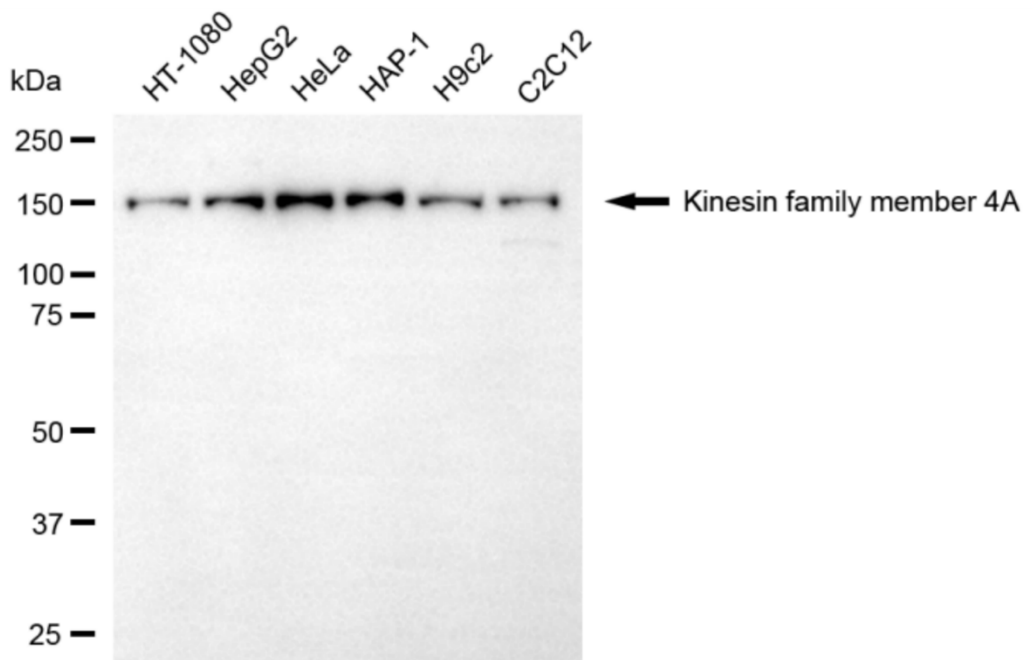
Store at -20 °C for one year.

### Recommended Dilutions

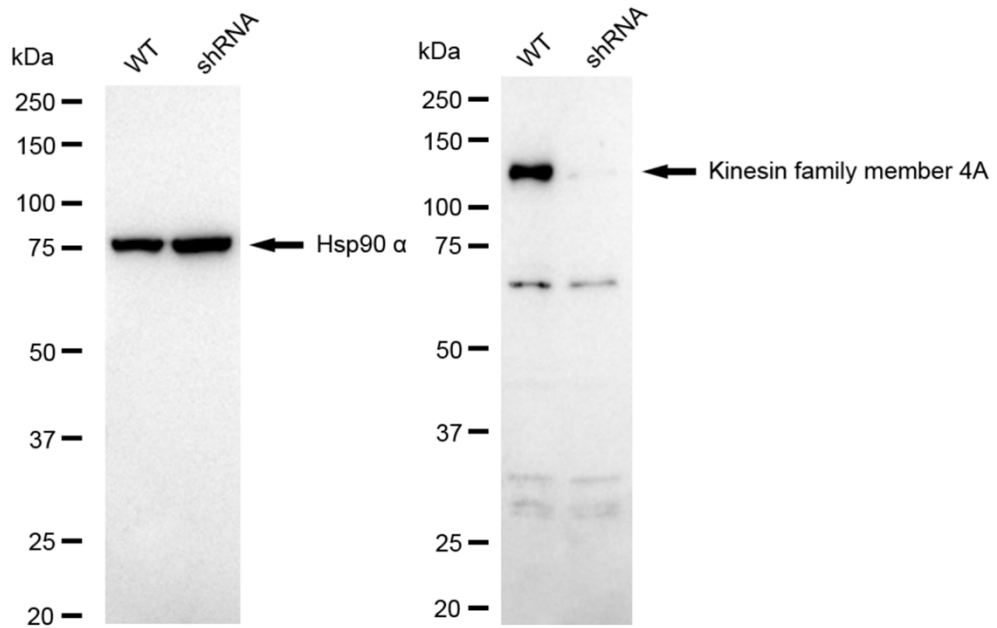
Western Blotting (WB): 1:1,000-1:5,000 Flow Cytometry (FCM): 1:2,000  
Immunocytochemistry (IC): 1:1,000

### Protocols

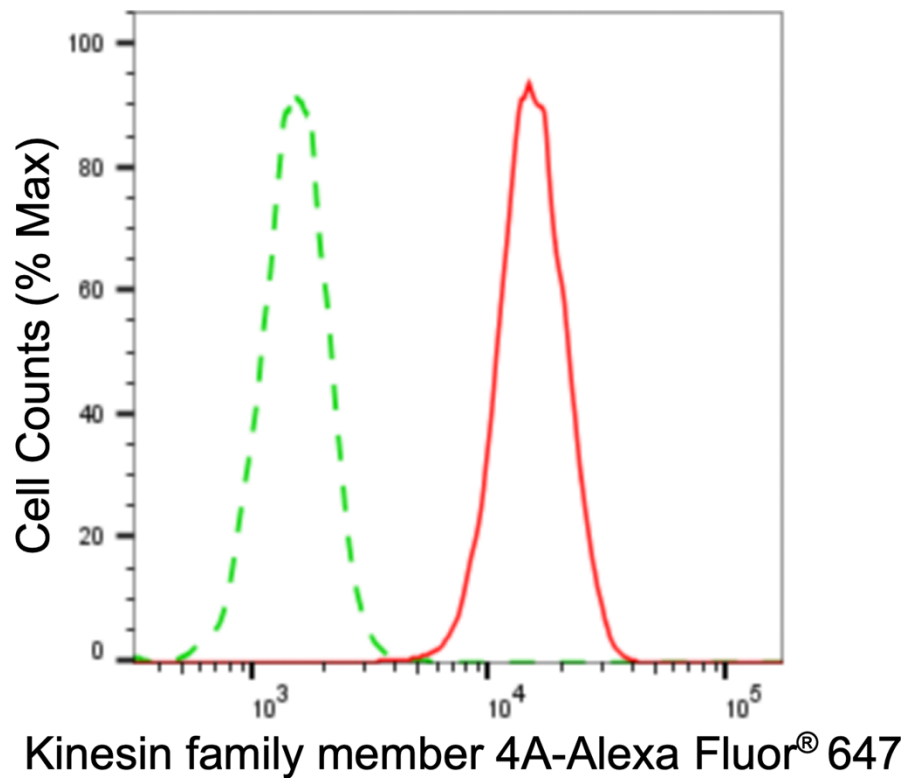
For general and specific antibody protocols please visit our website. Read all instructions before using this product.



Western blotting analysis using anti-kinesin family member 4A antibody 1:5,000 and HRP-conjugated goat anti-rabbit secondary antibody 1:20,000 respectively. Image was developed using FeQTM ECL Substrate Kit .



Western blotting analysis using anti-kinesin family member 4A antibody 1:5,000 and HRP-conjugated goat anti-rabbit secondary antibody 1:20,000 respectively. Image was developed using NaQ™ ECL Substrate Kit 1:1,000. Nuclei were stained blue with DAPI; Kinesin family member 4A was stained magenta with Alexa Fluor® 647. Images were taken using Leica stellaris 5. Protein abundance based on laser Intensity and smart gain: Medium. Scale bar: 20  $\mu$ m.



Flow cytometric analysis of kinesin family member 4A expression in HAP-1 cells using anti-kinesin family member 4A antibody 1:2,000. Green, isotype control; red, kinesin family member 4A.