



SunLong Biotech Co.,LTD
Tel: 0086-571- 56623320 Fax:0086-571- 56623318
E-mail:sales@sunlongbiotech.com
www.sunlongbiotech.com

[KD-Validated] Anti-Kinesin Family Member 2C Rabbit Monoclonal Antibody

Cat No.: KD-10529

Aliases:

KIF2C; Kinesin Family Member 2C; MCAK; CT139; KNSL6; Mitotic Centromere-Associated Kinesin; Kinesin-Like Protein KIF2C; Kinesin-Like Protein 6; Kinesin-Like 6 (Mitotic Centromere-Associated Kinesin); Testis Tissue Sperm-Binding Protein Li 68n

Background:

UniProt Entry: [Q99661](#);NCBI Gene Entry: [11004](#)

Application Information

Molecular Weight: Predicted, 81 kDa, observed, 75 kDa Clonality: Rabbit monoclonal antibody Clone ID: 24GB4930 Species Reactivity: Human Applications Tested: Western Blotting (WB), Flow Cytometry (FCM)

Immunogen

A synthesized peptide derived from human MCAK

Isotype

Rabbit IgG

Storage Buffer

Supplied in PBS (pH 7.4) containing 50% glycerol, and 0.02% sodium azide.

Storage

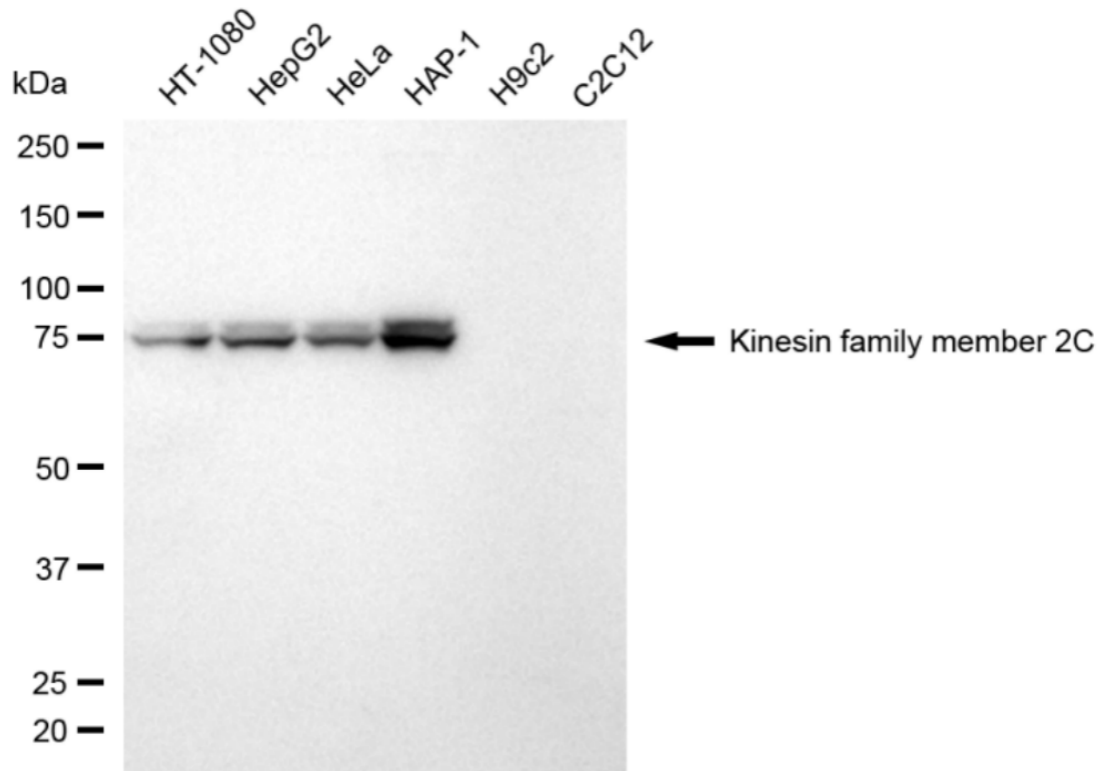
Store at -20 °C for one year.

Recommended Dilutions

Western Blotting (WB): 1:1,000-1:5,000 Flow Cytometry (FCM): 1:2,000

Protocols

For general and specific antibody protocols please visit our website. Read all instructions before using this product.



Western blotting analysis using anti-kinesin family member 2C antibody 1:5,000 and HRP-conjugated goat anti-rabbit secondary antibody 1:20,000 respectively. Image was developed using NaQ™ ECL Substrate Kit 1:5,000 and HRP-conjugated goat anti-rabbit secondary antibody 1:20,000 respectively. Image was developed using NaQ™ ECL Substrate Kit 1:2,000. Green, isotype control; red, kinesin family member 2C.