



SunLong Biotech Co.,LTD
Tel: 0086-571- 56623320 Fax:0086-571- 56623318
E-mail:sales@sunlongbiotech.com
www.sunlongbiotech.com

[KD-Validated] Anti-Kinesin family member 23 Rabbit Monoclonal Antibody

Cat No.: KD-10528

Aliases:

KIF23; Kinesin Family Member 23; MKLP1; MKLP-1; KNLSL5; Kinesin-Like 5 (Mitotic Kinesin-Like Protein 1); Kinesin-Like Protein KIF23; Congenital Dyserythropoietic Anemia, Type III; Mitotic Kinesin-Like Protein 1; Kinesin-Like Protein 5; CDAIII; CDAN3A; CDAN3; CDA3; CHO1

Background:

UniProt Entry: [Q02241](#);NCBI Gene Entry: [9493](#)

Application Information

Molecular Weight: Predicted, 110 kDa, observed, 98 kDa Clonality: Rabbit monoclonal antibody Clone ID: 23GB4035 Species Reactivity: Human, Mouse, Rat Applications Tested: Western Blotting (WB), Flow Cytometry (FCM), Immunocytochemistry (IC)

Immunogen

A synthesized peptide derived from human MKLP1

Isotype

Rabbit IgG

Storage Buffer

Supplied in PBS (pH 7.4) containing 50% glycerol, and 0.02% sodium azide.

Storage

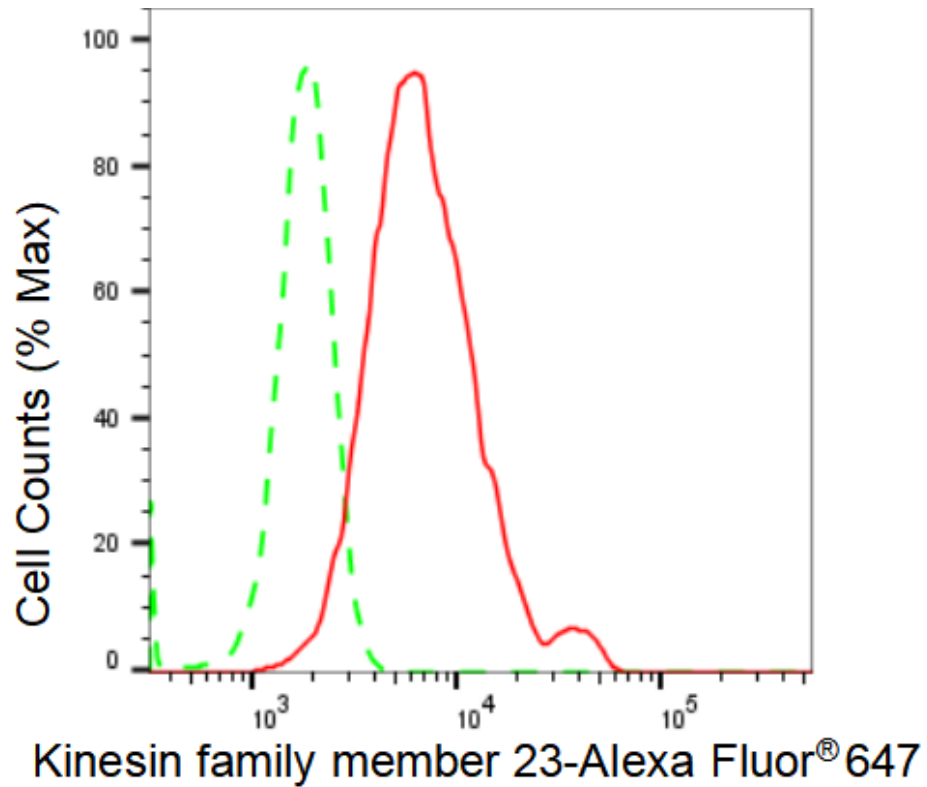
Store at -20 °C for one year.

Recommended Dilutions

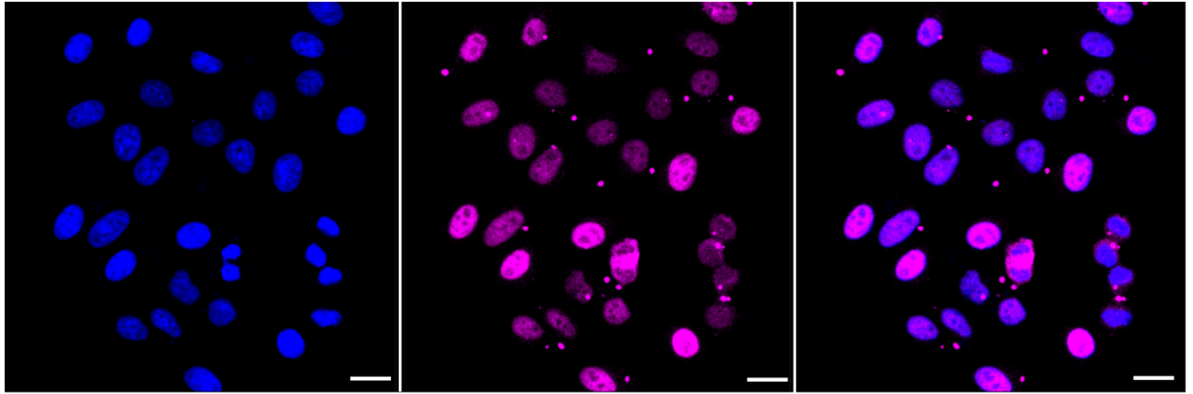
Western Blotting (WB): 1:1,000-1:5,000 Flow Cytometry (FCM): 1:2,000
Immunocytochemistry (IC): 1:1,000

Protocols

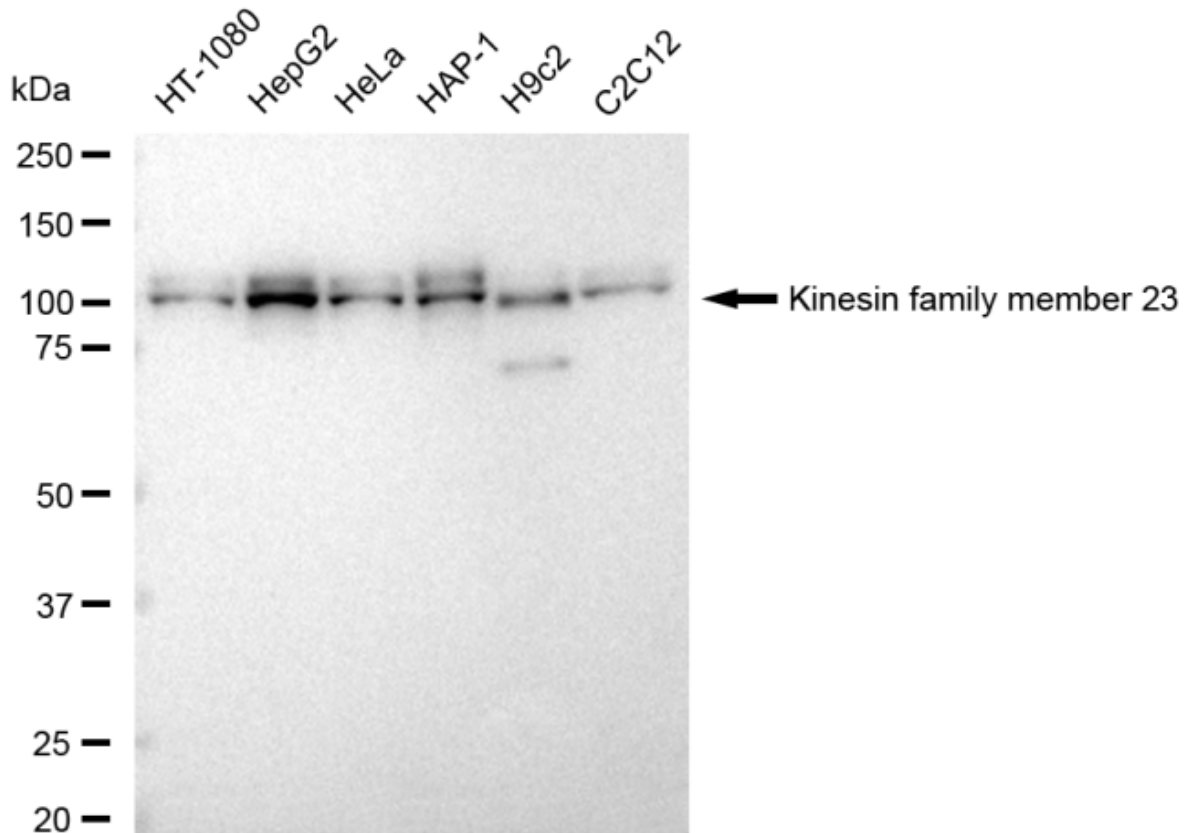
For general and specific antibody protocols please visit our website. Read all instructions before using this product.



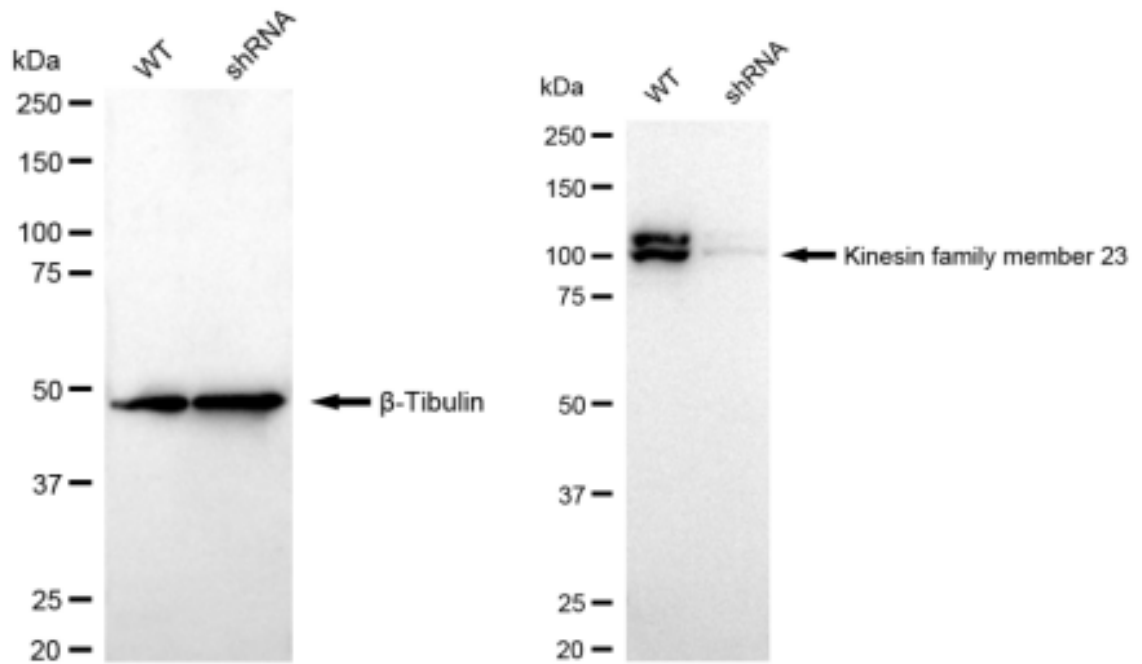
Flow cytometric analysis of Kinesin family member 23 expression in HepG2 cells using Kinesin family member 23 antibody 1:2,000. Green, isotype control; red, Kinesin family member 23.



Immunocytochemical staining of HepG2 cells with Kinesin family member 23 antibody 1:1,000. Nuclei were stained blue with DAPI; Kinesin family member 23 was stained magenta with Alexa Fluor® 647. Images were taken using Leica stellaris 5. Protein abundance based on laser Intensity and smart gain: High. Scale bar: 20 μ m.



Western blotting analysis using anti-Kinesin family member 23 antibody 1:5,000 and HRP-conjugated goat anti-rabbit secondary antibody 1:20,000 respectively. Image was developed using FeQ™ ECL Substrate Kit .



Western blotting analysis using anti-Kinesin family member 23 antibody 1:5,000 and HRP-conjugated goat anti-rabbit secondary antibody 1:20,000 respectively. Image was developed using FeQ™ ECL Substrate Kit .