



SunLong Biotech Co.,LTD  
Tel: 0086-571- 56623320 Fax:0086-571- 56623318  
E-mail:sales@sunlongbiotech.com  
www.sunlongbiotech.com

## [KD-Validated] Anti-Lysine demethylase 1B Rabbit Monoclonal Antibody

Cat No.: KD-10525

### Aliases:

KDM1B; Lysine Demethylase 1B; LSD2; AOF1; Flavin-Containing Amine Oxidase Domain-Containing Protein 1; Lysine-Specific Histone Demethylase 1B; Lysine-Specific Histone Demethylase; Lysine (K)-Specific Demethylase 1B; DJ298J15.2; BA204B7.3; FLJ34109; FLJ33898; FLJ43328; C6orf193; Amine Oxidase (Flavin Containing) Domain 1; Chromosome 6 Open Reading Frame 193; Amine Oxidase, Flavin Containing 1; EC 1.14.99.66; C6ORF193

### Background:

UniProt Entry: [Q8NB78](#);NCBI Gene Entry: [221656](#)

### Application Information

Molecular Weight: Predicted, 92 kDa, observed, 75 kDa Clonality: Rabbit monoclonal antibody Clone ID: 23GB6265 Spncies Reactivity: Human, Rat Applications Tested: Western Blotting (WB), Flow Cytometry (FCM), Immunocytochemistry (IC)

### Immunogen

A synthesized peptide derived from human LSD2 / AOF1

### Isotype

Rabbit IgG

### Storage Buffer

Supplied in PBS (pH 7.4) containing 50% glycerol, and 0.02% sodium azide.

**Storage**

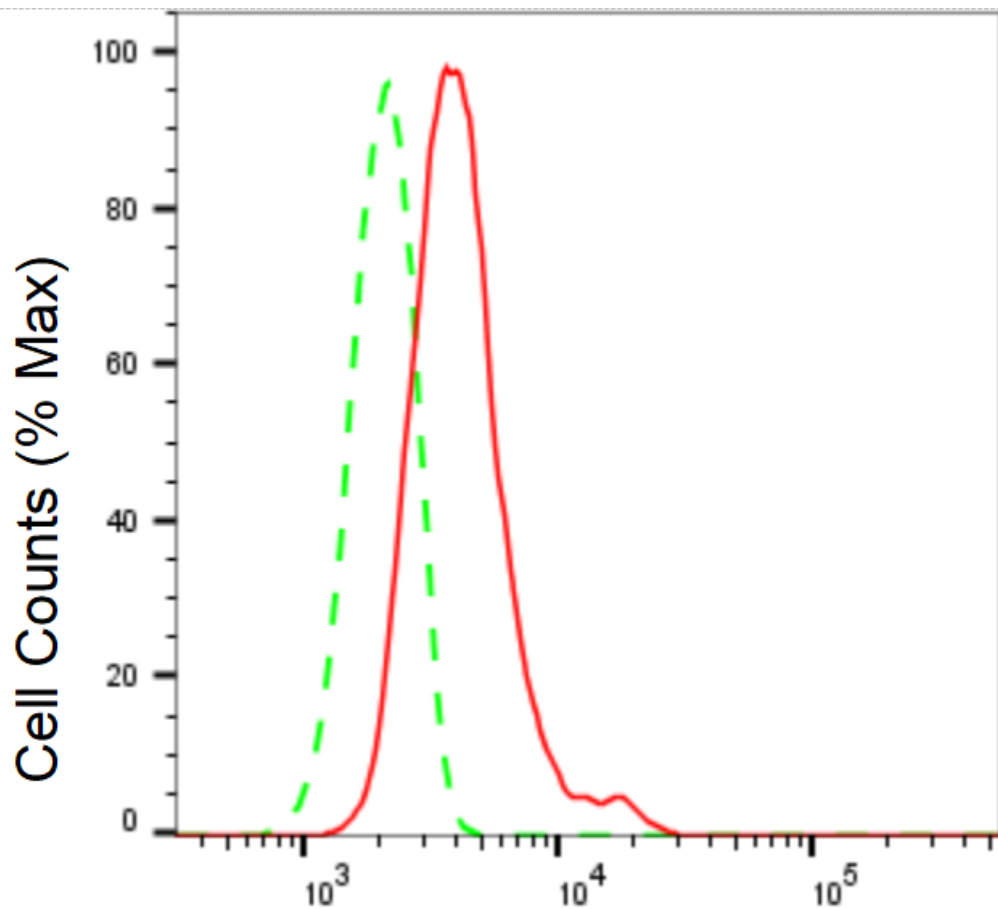
Store at -20 °C for one year.

**Recommended Dilutions**

Western Blotting (WB): 1:1,000-1:5,000 Flow Cytometry (FCM): 1:2,000  
Immunocytochemistry (IC): 1:1,000

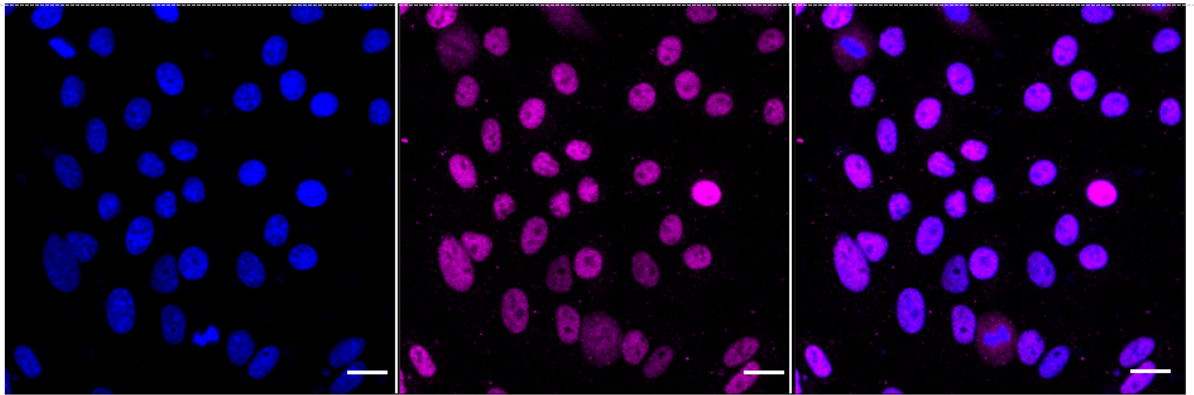
**Protocols**

For general and specific antibody protocols please visit our website. Read all instructions before using this product.

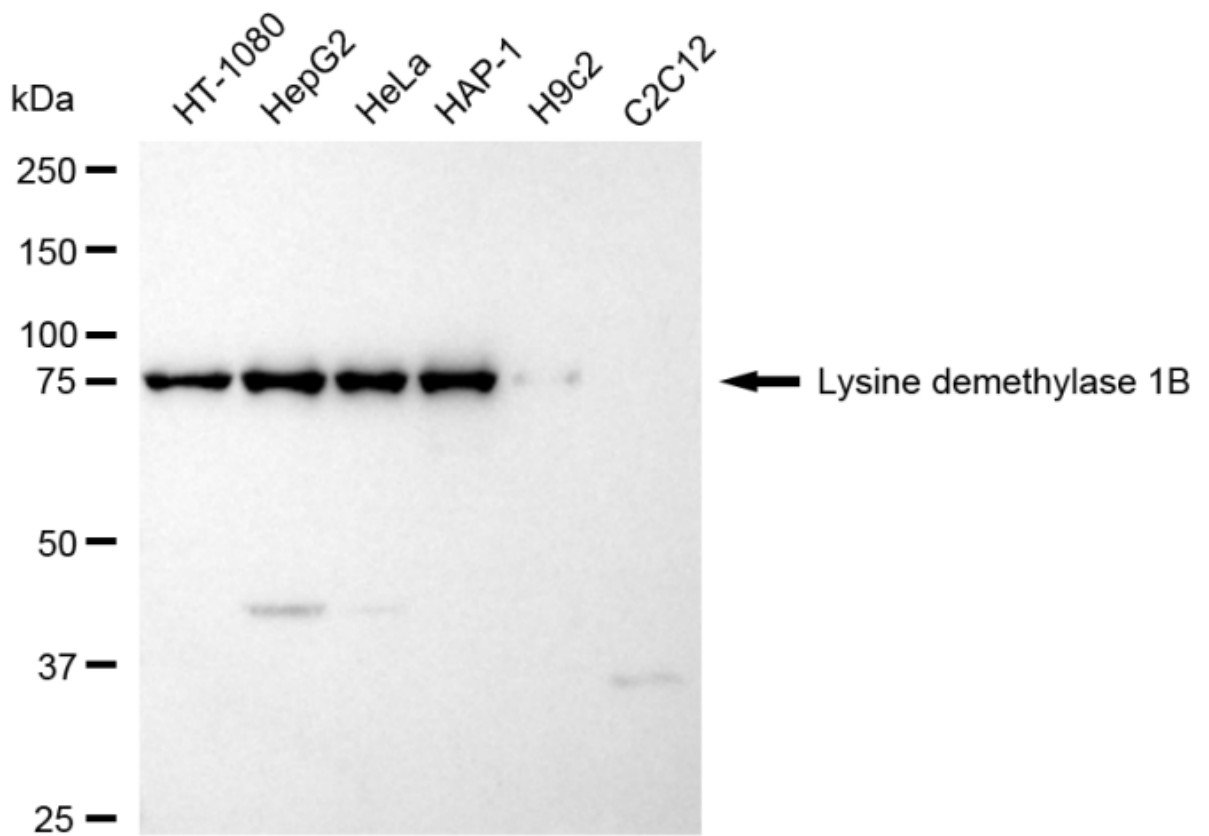


Lysine demethylase 1B-Alexa Fluor<sup>®</sup> 647

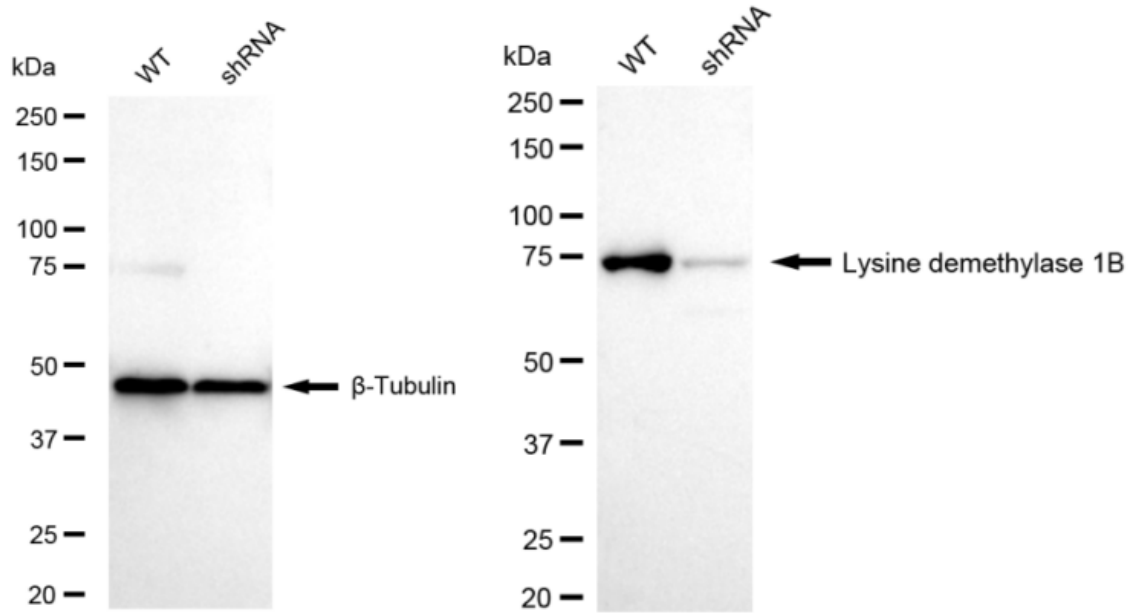
Flow cytometric analysis of Lysine demethylase 1B expression in HepG2 cells using Lysine demethylase 1B antibody 1:2,000. Green, isotype control; red, Lysine demethylase 1B.



Immunocytochemical staining of HepG2 cells with anti-Lysine demethylase 1B antibody 1:1,000. Nuclei were stained blue with DAPI; Lysine demethylase 1B was stained magenta with Alexa Fluor® 647. Images were taken using Leica stellaris 5. Protein abundance based on laser Intensity and smart gain: Medium. Scale bar: 20  $\mu$ m.



Western blotting analysis using anti-Lysine demethylase 1B antibody 1:5,000 and HRP-conjugated goat anti-rabbit secondary antibody 1:20,000 respectively. Image was developed using FeQ™ ECL Substrate Kit .



Western blotting analysis using anti-Lysine demethylase 1B antibody 1:5,000 and HRP-conjugated goat anti-rabbit secondary antibody 1:20,000 respectively. Image was developed using FeQ™ ECL Substrate Kit .