



SunLong Biotech Co.,LTD
Tel: 0086-571- 56623320 Fax:0086-571- 56623318
E-mail:sales@sunlongbiotech.com
www.sunlongbiotech.com

[KD-Validated] Anti-Katanin catalytic subunit A1 Rabbit Monoclonal Antibody

Cat No.: KD-10524

Aliases:

KATNA1; Katanin Catalytic Subunit A1; Katanin P60 (ATPase Containing) Subunit A 1; Katanin P60 ATPase-Containing Subunit A1; Katanin P60 Subunit A1; P60 Katanin; Katanin P60 (ATPase-Containing) Subunit A 1; EC 5.6.1.1; EC 3.6.4.3

Background:

UniProt Entry: [O75449](#);NCBI Gene Entry: [11104](#)

Application Information

Molecular Weight: Predicted, 56 kDa, observed, 49 kDa Clonality: Rabbit monoclonal antibody Clone ID: 23GB4765 Species Reactivity: Human Applications Tested: Western Blotting (WB), Flow Cytometry (FCM)

Immunogen

A synthesized peptide derived from human p60 katanin

Isotype

Rabbit IgG

Storage Buffer

Supplied in PBS (pH 7.4) containing 50% glycerol, and 0.02% sodium azide.

Storage

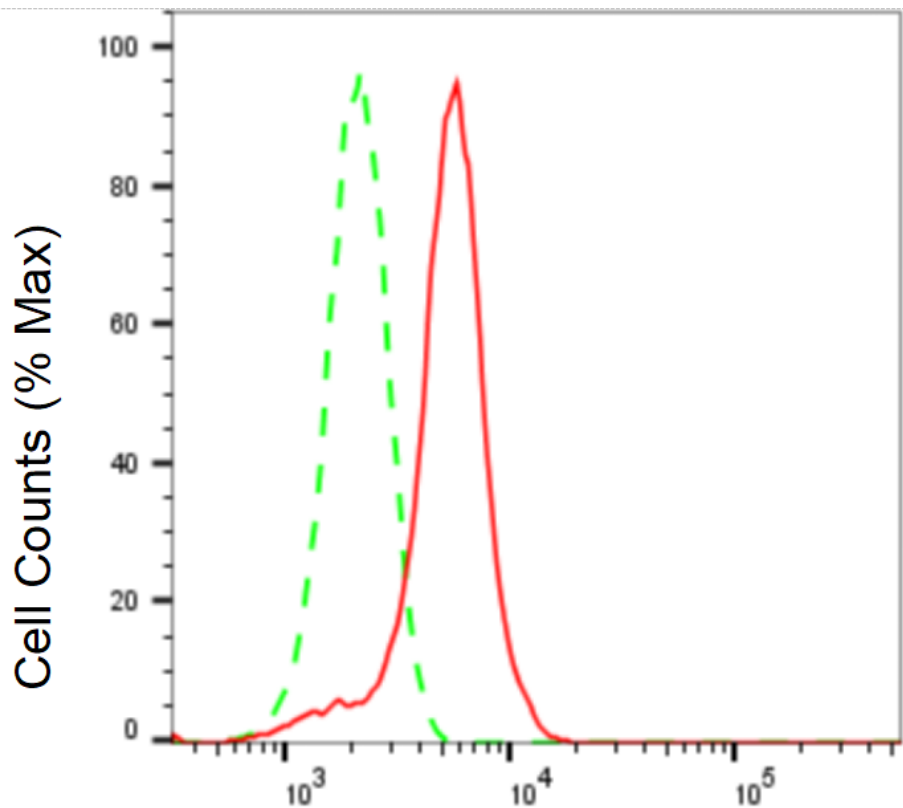
Store at -20 °C for one year.

Recommended Dilutions

Western Blotting (WB): 1:1,000-1:5,000 Flow Cytometry (FCM): 1:2,000

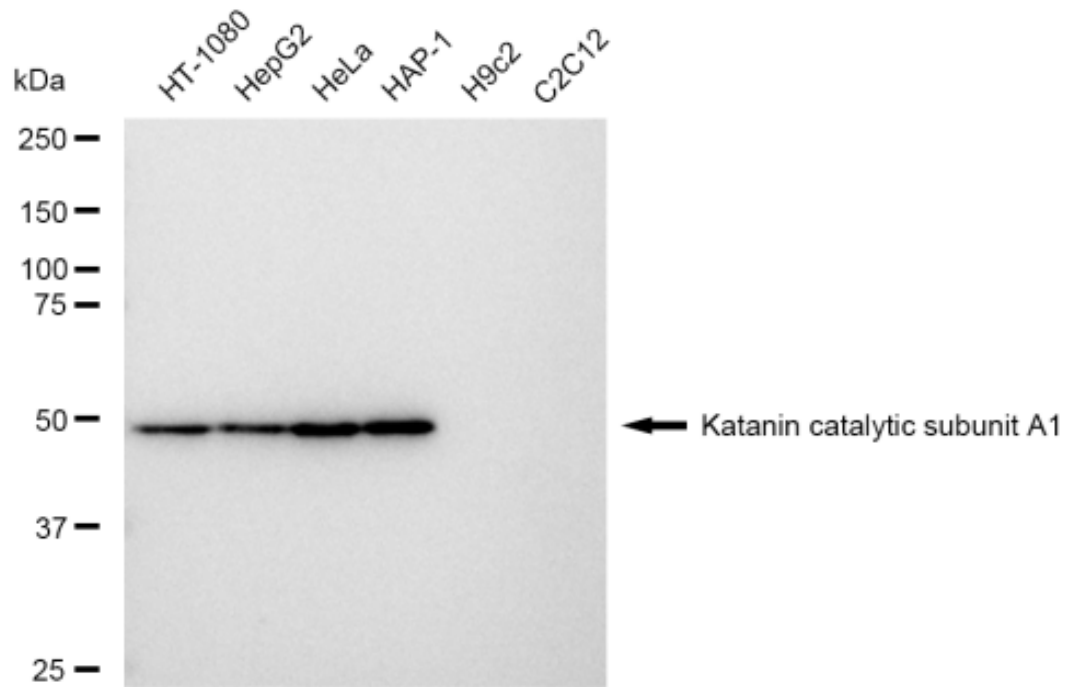
Protocols

For general and specific antibody protocols please visit our website. Read all instructions before using this product.

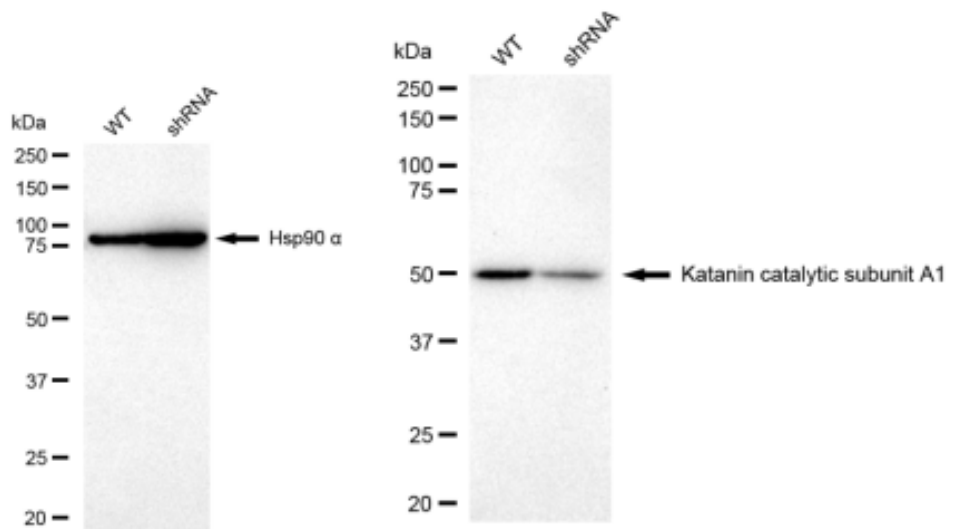


Katanin catalytic subunit A1-Alexa Fluor[®] 647

Flow cytometric analysis of Katanin catalytic subunit A1 expression in HeLa cells using Katanin catalytic subunit A1 antibody 1:2,000. Green, isotype control; red, Katanin catalytic subunit A1.



Western blotting analysis using anti-Katanin catalytic subunit A1 antibody 1:5,000 and HRP-conjugated goat anti-rabbit secondary antibody 1:20,000 respectively. Image was developed using FeQ™ ECL Substrate Kit .



Western blotting analysis using anti-Katanin catalytic subunit A1 antibody 1:5,000 and HRP-conjugated goat anti-rabbit secondary antibody 1:20,000 respectively. Image was developed using FeQ™ ECL Substrate Kit .