



SunLong Biotech Co.,LTD
Tel: 0086-571- 56623320 Fax:0086-571- 56623318
E-mail:sales@sunlongbiotech.com
www.sunlongbiotech.com

[KD-Validated] Anti-Lysine acetyltransferase 7 Rabbit Monoclonal Antibody

Cat No.: KD-10523

Aliases:

KAT7; Lysine Acetyltransferase 7; HBO1; Histone Acetyltransferase Binding To ORC1; ZC2HC7; MYST2; HBOA; MOZ, YBF2/SAS3, SAS2 And TIP60 Protein; MYST Histone Acetyltransferase 2; Histone Acetyltransferase KAT7; K(Lysine) Acetyltransferase 7; Histone Acetyltransferase MYST2; EC 2.3.1.48; MYST-2; HBOa

Background:

UniProt Entry: [O95251](#);NCBI Gene Entry: [11143](#)

Application Information

Molecular Weight: Predicted, 71 kDa, observed, 75 kDa Clonality: Rabbit monoclonal antibody Clone ID: 23GB2390 Species Reactivity: Human, Mouse, Rat Applications Tested: Western Blotting (WB), Flow Cytometry (FCM), Immunocytochemistry (IC)

Immunogen

A synthesized peptide derived from human KAT7 / HBO1 / MYST2

Isotype

Rabbit IgG

Storage Buffer

Supplied in PBS (pH 7.4) containing 50% glycerol, and 0.02% sodium azide.

Storage

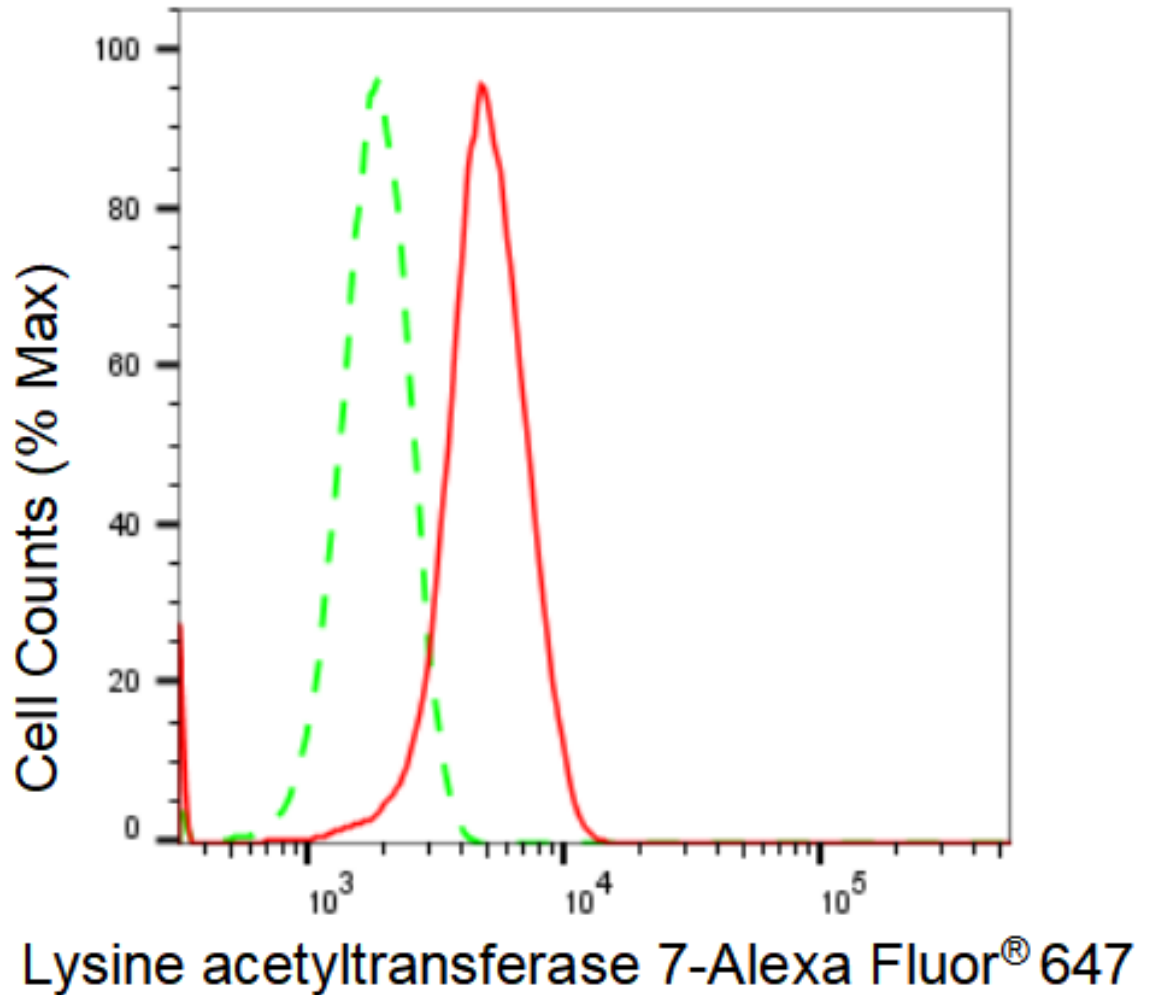
Store at -20 °C for one year.

Recommended Dilutions

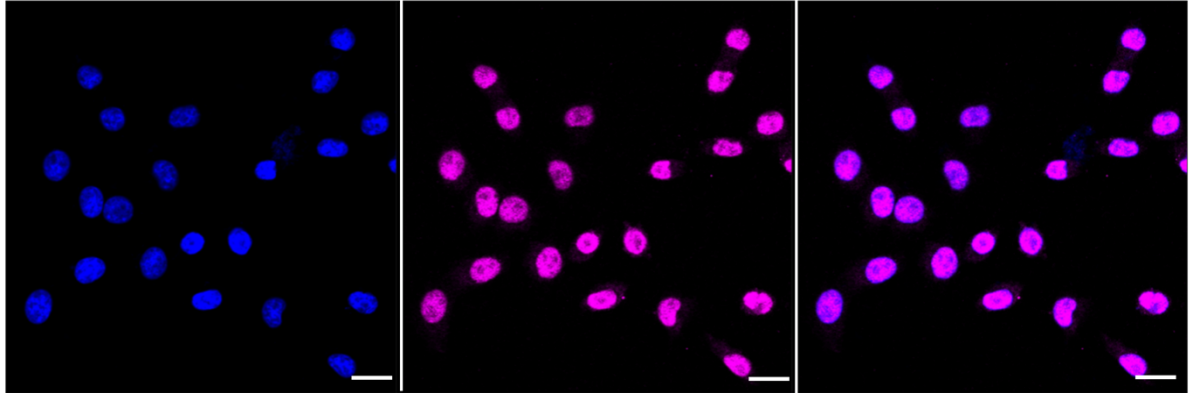
Western Blotting (WB): 1:1,000-1:5,000 Flow Cytometry (FCM): 1:2,000
Immunocytochemistry (IC): 1:1,000

Protocols

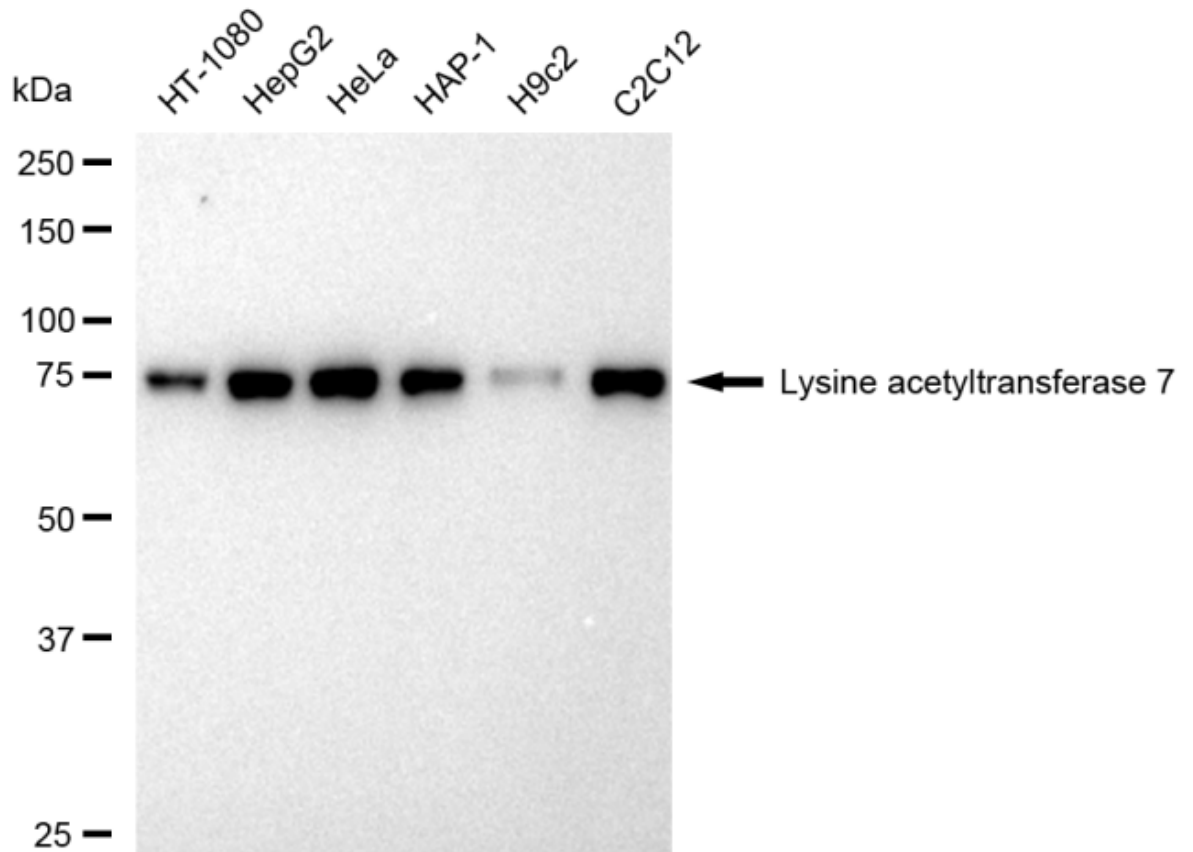
For general and specific antibody protocols please visit our website. Read all instructions before using this product.



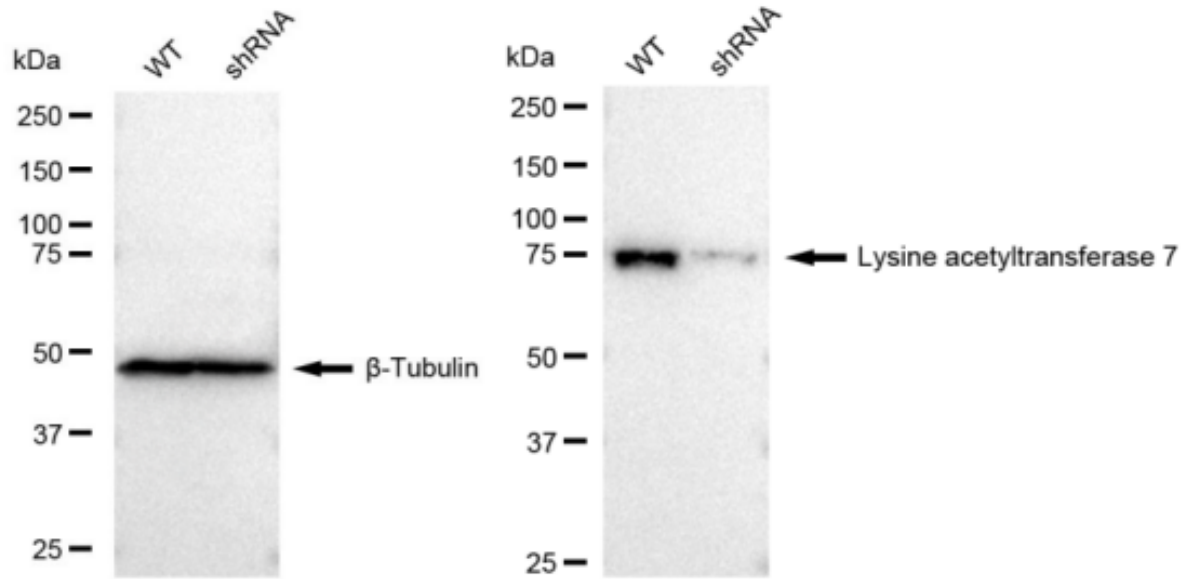
Flow cytometric analysis of Lysine acetyltransferase 7 expression in HepG2 cells using Lysine acetyltransferase 7 antibody 1:2,000. Green, isotype control; red, Lysine acetyltransferase 7.



Immunocytochemical staining of HepG2 cells with Lysine acetyltransferase 7 antibody 1:1,000. Nuclei were stained blue with DAPI; Lysine acetyltransferase 7 was stained magenta with Alexa Fluor® 647. Images were taken using Leica stellaris 5. Protein abundance based on laser Intensity and smart gain: Medium. Scale bar: 20 µm.



Western blotting analysis using anti-Lysine acetyltransferase 7 antibody 1:5,000 and HRP-conjugated goat anti-rabbit secondary antibody 1:20,000 respectively. Image was developed using FeQ™ ECL Substrate Kit .



Western blotting analysis using anti-Lysine acetyltransferase 7 antibody 1:5,000 and HRP-conjugated goat anti-rabbit secondary antibody 1:20,000 respectively. Image was developed using FeQ™ ECL Substrate Kit .