



SunLong Biotech Co.,LTD  
Tel: 0086-571- 56623320 Fax:0086-571- 56623318  
E-mail:sales@sunlongbiotech.com  
www.sunlongbiotech.com

## [KD-Validated] Anti-PCAF Rabbit Monoclonal Antibody

Cat No.: KD-10522

### Aliases:

Lysine Acetyltransferase 2B; P/CAF; P300/CBP-Associated Factor; PCAF; Spermidine Acetyltransferase KAT2B; Histone Acetyltransferase KAT2B; K(Lysine) Acetyltransferase 2B; Histone Acetyltransferase PCAF; Histone Acetylase PCAF; EC 2.3.1.48; GCN5L; GCN5; CREBBP-Associated Factor; EC 2.3.1.57; CAF

### Background:

UniProt Entry: [Q92831](#);NCBI Gene Entry: [8850](#)

### Application Information

Molecular Weight: Predicted, 93 kDa, observed, 93 kDa Clonality: Rabbit monoclonal antibody Clone ID: 23GB910 Species Reactivity: Human Applications Used: Western Blotting (WB), Flow Cytometry (FCM), Immunocytochemistry (IC)

### Immunogen

A synthesized peptide derived from human PCAF

### Isotype

Rabbit IgG

### Storage Buffer

Supplied in PBS (pH 7.4) containing 50% glycerol, and 0.02% sodium azide.

### Storage

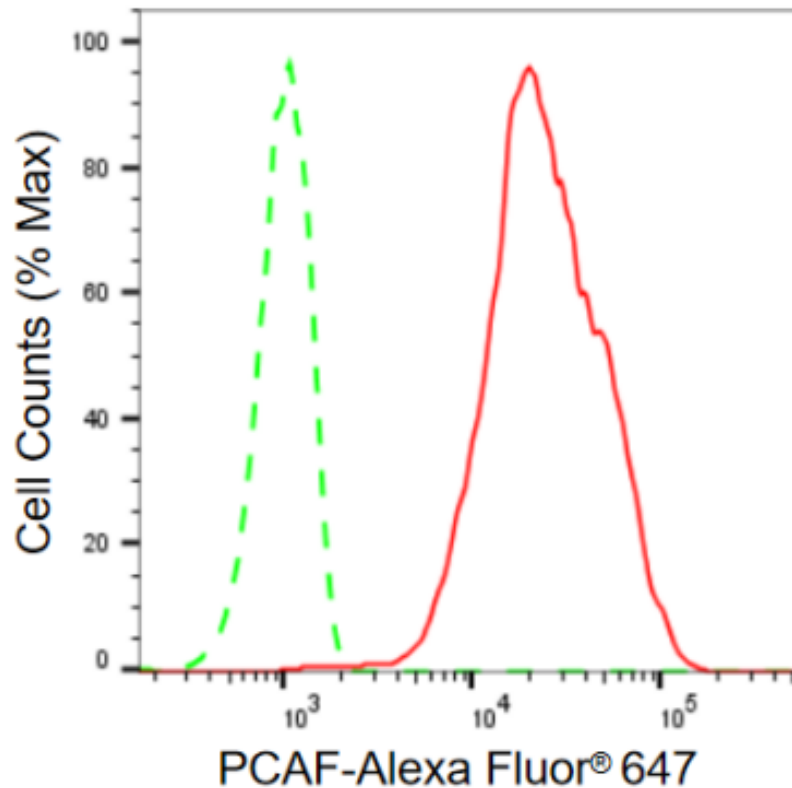
Store at -20 °C for one year.

### Recommended Dilutions

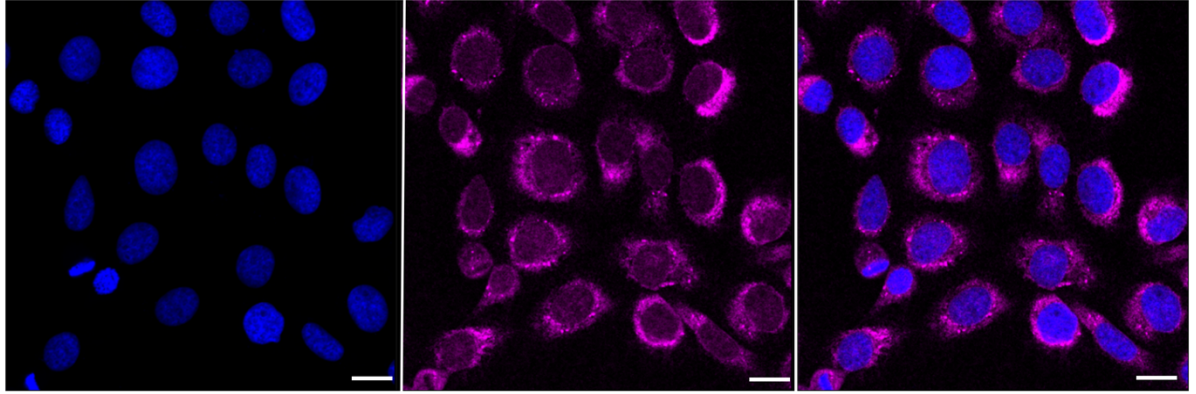
Western Blotting (WB): 1:1,000-1:5,000 Flow Cytometry (FCM): 1:2,000  
Immunocytochemistry (IC): 1:1,000

### Protocols

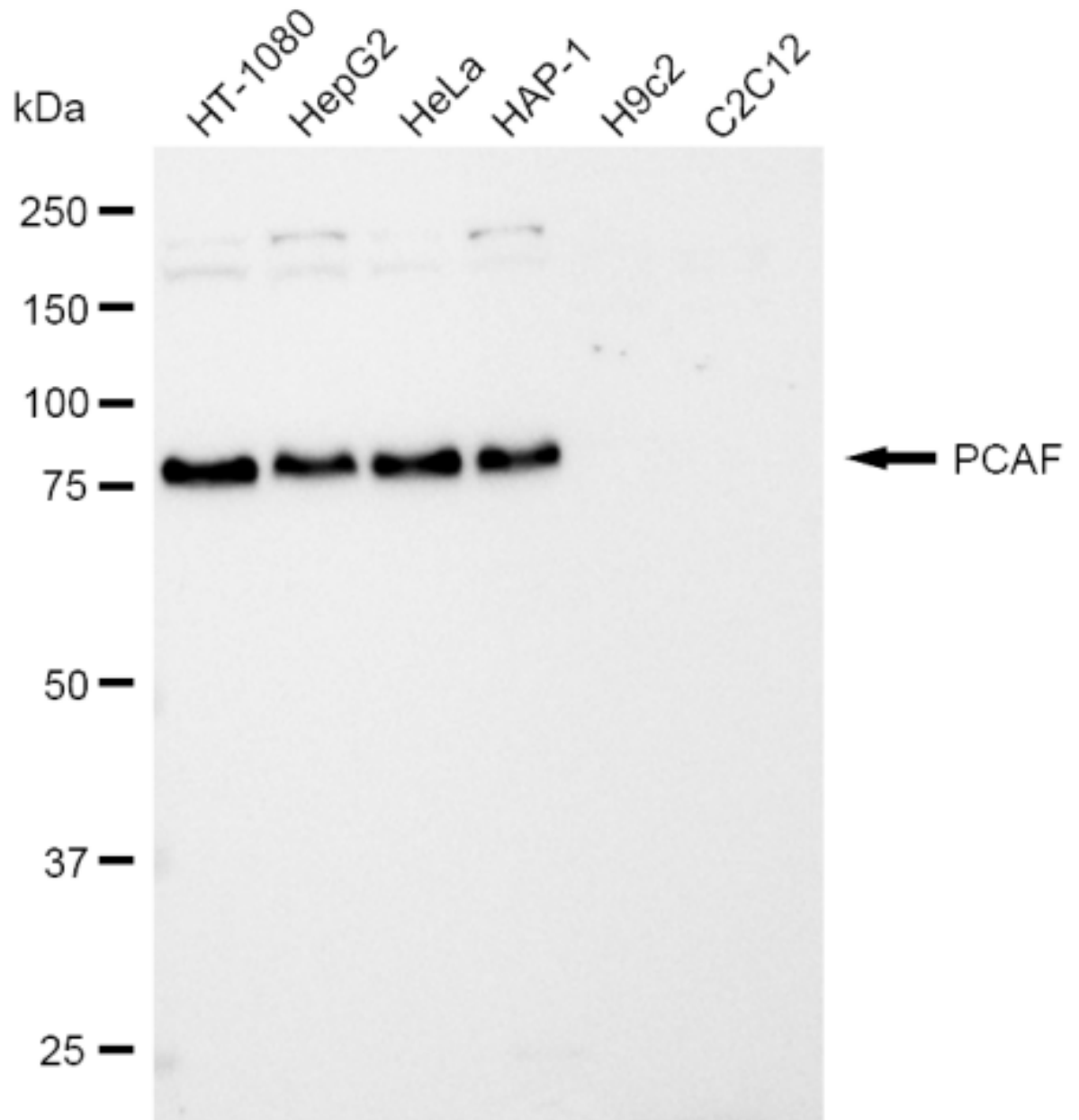
For general and specific antibody protocols please visit our website. Read all instructions before using this product.



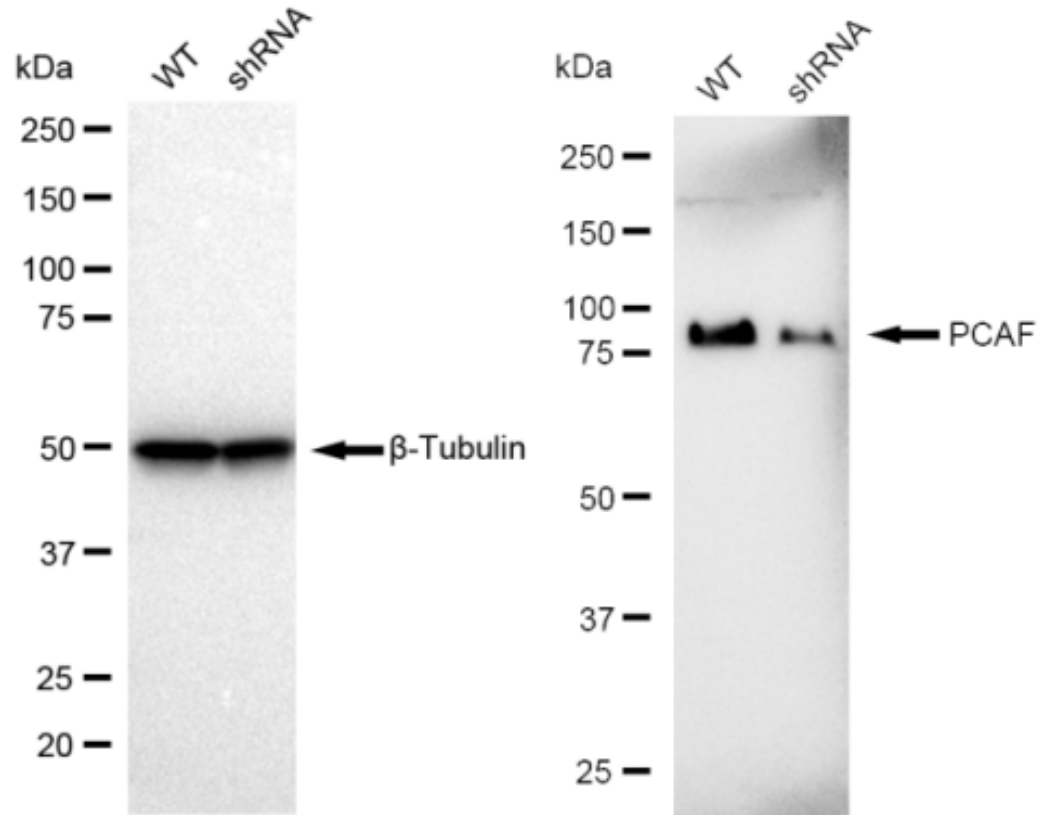
Flow cytometric analysis of PCAF expression in HT-1080 cells using PCAF antibody 1:2,000. Green, isotype control; red, PCAF.



Immunocytochemical staining of HT-1080 cells with PCAF antibody 1:1,000. Nuclei were stained blue with DAPI; PCAF was stained magenta with Alexa Fluor® 647. Images were taken using Leica stellaris 5. Protein abundance based on laser Intensity and smart gain: Medium. Scale bar: 20  $\mu\text{m}$ .



Western blotting analysis using anti-PCAF antibody 1:5,000 and HRP-conjugated goat anti-rabbit secondary antibody 1:50,000 respectively. Image was developed using FeQ™ ECL Substrate Kit .



Western blotting analysis using anti-PCAF antibody 1:5,000 and HRP-conjugated goat anti-rabbit secondary antibody 1:20,000 respectively. Image was developed using FeQ™ ECL Substrate Kit .