



SunLong Biotech Co.,LTD  
Tel: 0086-571- 56623320 Fax:0086-571- 56623318  
E-mail:sales@sunlongbiotech.com  
www.sunlongbiotech.com

## **[KD-Validated] Anti-Lysyl-tRNA synthetase 1 Rabbit Monoclonal Antibody**

Cat No.: KD-10521

### **Aliases:**

KARS1; Lysyl-TRNA Synthetase 1; KARS2; KARS; Lysyl-TRNA Synthetase; Lysine--TRNA Ligase; Lysine TRNA Ligase; EC 6.1.1.6; DFNB89; LysRS; Deafness, Autosomal Recessive 89; EC 2.7.7.-; KIAA0070; EC 6.1.1; CMTRIB; DEAPLE; LEPID; KRS

### **Background:**

UniProt Entry: [Q15046](#);NCBI Gene Entry: [3735](#)

### **Application Information**

Molecular Weight: Predicted, 68 kDa, observed, 73 kDa Clonality: Rabbit monoclonal antibody Clone ID: 24GB6130 Species Reactivity: Human, Mouse, Rat Applications Tested: Western Blotting (WB), Flow Cytometry (FCM), Immunocytochemistry (IC)

### **Immunogen**

A synthesized peptide derived from human LysRS

### **Isotype**

Rabbit IgG

### **Storage Buffer**

Supplied in PBS (pH 7.4) containing 50% glycerol, and 0.02% sodium azide.

## Storage

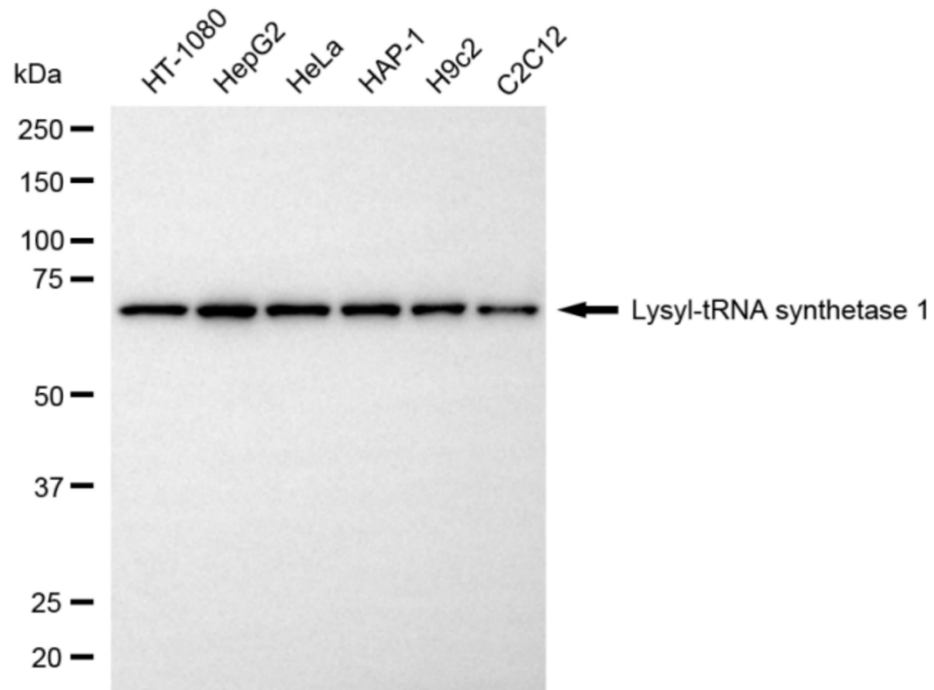
Store at -20 °C for one year.

## Recommended Dilutions

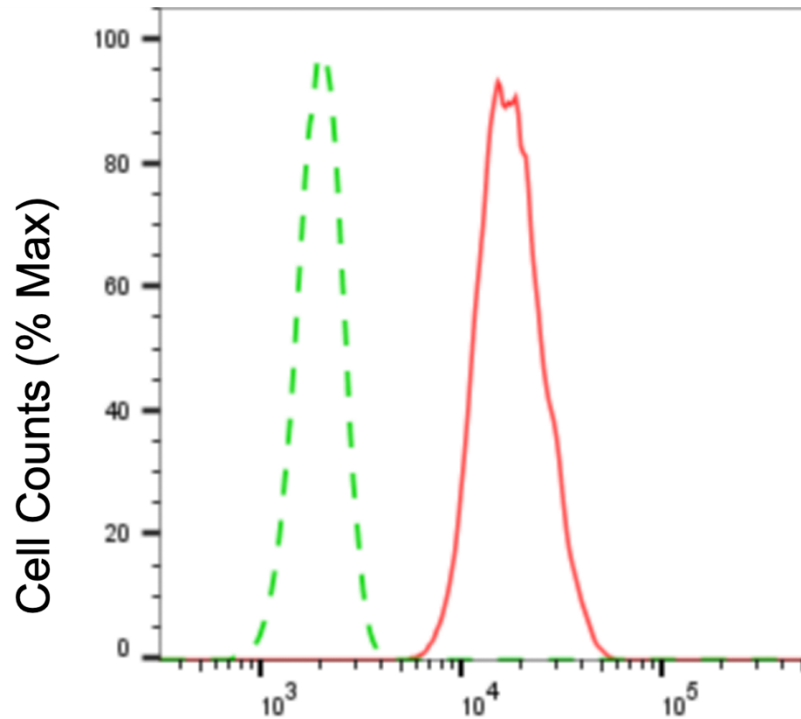
Western Blotting (WB): 1:1,000-1:5,000 Flow Cytometry (FCM): 1:2,000  
Immunocytochemistry (IC): 1:1,000

## Protocols

For general and specific antibody protocols please visit our website. Read all instructions before using this product.



Western blotting analysis using anti-lysyl-tRNA synthetase 1 antibody 1:5,000 and HRP-conjugated goat anti-rabbit secondary antibody 1:20,000 respectively. Image was developed using NaQ™ ECL Substrate Kit 1:5,000 and HRP-conjugated goat anti-rabbit secondary antibody 1:20,000 respectively. Image was developed using NaQ™ ECL Substrate Kit 1:1,000. Nuclei were stained blue with DAPI; Lysyl-tRNA synthetase 1 was stained magenta with Alexa Fluor® 647. Images were taken using Leica stellaris 5. Protein abundance based on laser Intensity and smart gain: High. Scale bar: 20 µm.



### Lysyl-tRNA synthetase 1-Alexa Fluor® 647

Flow cytometric analysis of lysyl-tRNA synthetase 1 expression in HepG2 cells using lysyl-tRNA synthetase 1 antibody (KD-10521, 1:2,000). Green, isotype control; red, lysyl-tRNA synthetase 1.