



SunLong Biotech Co.,LTD
Tel: 0086-571- 56623320 Fax:0086-571- 56623318
E-mail:sales@sunlongbiotech.com
www.sunlongbiotech.com

[KD-Validated] Anti-JUP Rabbit Monoclonal Antibody

Cat No.: KD-10520

Aliases:

JUP; Junction Plakoglobin; DP3; DPIII; CTNNG; PDGB; PKGB; PG; Catenin (Cadherin-Associated Protein), Gamma 80kDa; Desmosomal Protein 3; Desmoplakin III; Desmoplakin-3; Catenin Gamma

Background:

UniProt Entry: [P14923](#);NCBI Gene Entry: [3728](#)

Application Information

Molecular Weight: Predicted, 82 kDa, observed, 75 kDa Clonality: Rabbit monoclonal antibody Clone ID: 24GB6055 Species Reaceivity: Human, Mouse Applicseions Tsted: Western Blotting (WB), Flow Cytometry (FCM), Immunocytochemistry (IC)

Immunogen

A synthesized peptide derived from human Catenin gamma

Isotype

Rabbit IgG

Storage Buffer

Supplied in PBS (pH 7.4) containing 50% glycerol, and 0.02% sodium azide.

Storage

Store at -20 °C for one year.

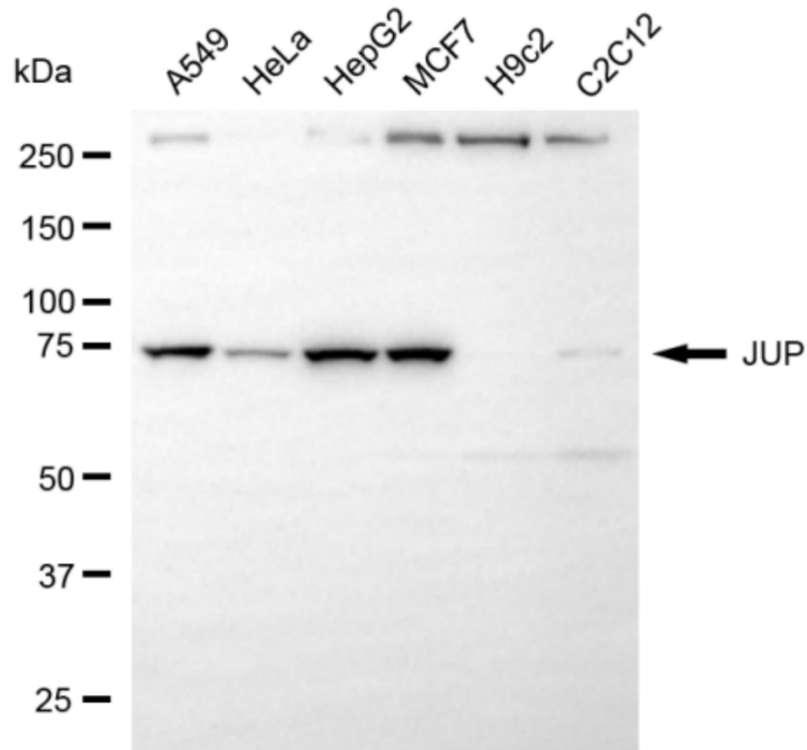
Recommended Dilutions

Western Blotting (WB): 1:1,000-1:5,000 Flow Cytometry (FCM): 1:2,000

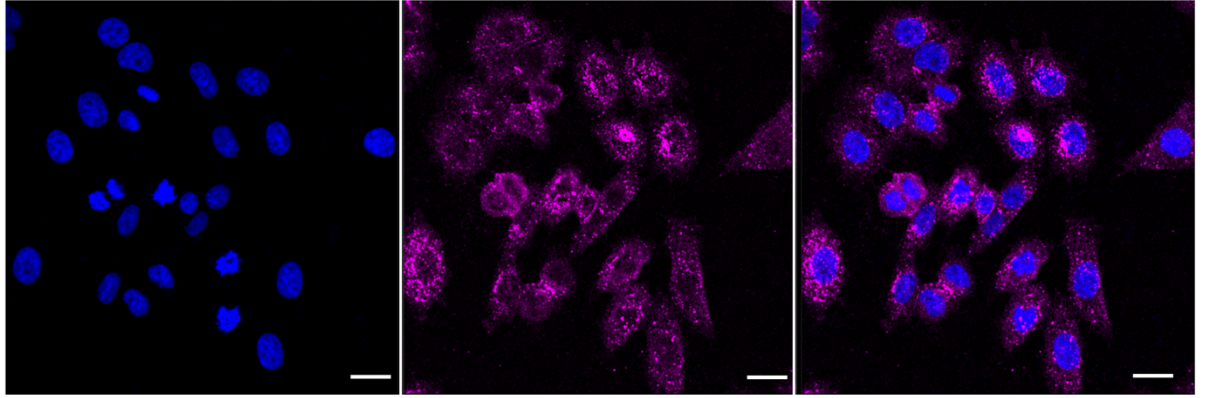
Immunocytochemistry (IC): 1:1,000

Protocols

For general and specific antibody protocols please visit our website. Read all instructions before using this product.



Western blotting analysis using anti-JUP antibody 1:5,000 and HRP-conjugated goat anti-rabbit secondary antibody 1:20,000 respectively. Image was developed using NaQ™ ECL Substrate Kit 1:5,000 and HRP-conjugated goat anti-rabbit secondary antibody 1:20,000 respectively. Image was developed using NaQ™ ECL Substrate Kit 1:2,000. Green, isotype control; red, JUP.



Immunocytochemical staining of HepG2 cells with anti-JUP antibody 1:1,000. Nuclei were stained blue with DAPI; JUP was stained magenta with Alexa Fluor® 647. Images were taken using Leica stellaris 5. Protein abundance based on laser Intensity and smart gain: Medium. Scale bar: 20 μ m.