



SunLong Biotech Co.,LTD
Tel: 0086-571- 56623320 Fax:0086-571- 56623318
E-mail:sales@sunlongbiotech.com
www.sunlongbiotech.com

[KD-Validated] Anti-JunD Rabbit Monoclonal Antibody

Cat No.: KD-10519

Aliases:

JUND; JunD Proto-Oncogene, AP-1 Transcription Factor Subunit; AP-1; Transcription Factor AP-1 Subunit JunD; Transcription Factor Jun-D; Transcription Factor JunD; Activator Protein 1; Jun D Proto-Oncogene; JunD-FL Isoform

Background:

UniProt Entry: [P17535](#);NCBI Gene Entry: [3727](#)

Application Information

Molecular Weight: Predicted, 35 kDa, observed, 38,42 kDa Clonality: Rabbit monoclonal antibody Clone ID: 23GB6560 Species Reactivity: Human, Mouse, Rat Applications Tested: Western Blotting (WB), Flow Cytometry (FCM), Immunocytochemistry (IC)

Immunogen

A synthesized peptide derived from human JunD

Isotype

Rabbit IgG

Storage Buffer

Supplied in PBS (pH 7.4) containing 50% glycerol, and 0.02% sodium azide.

Storage

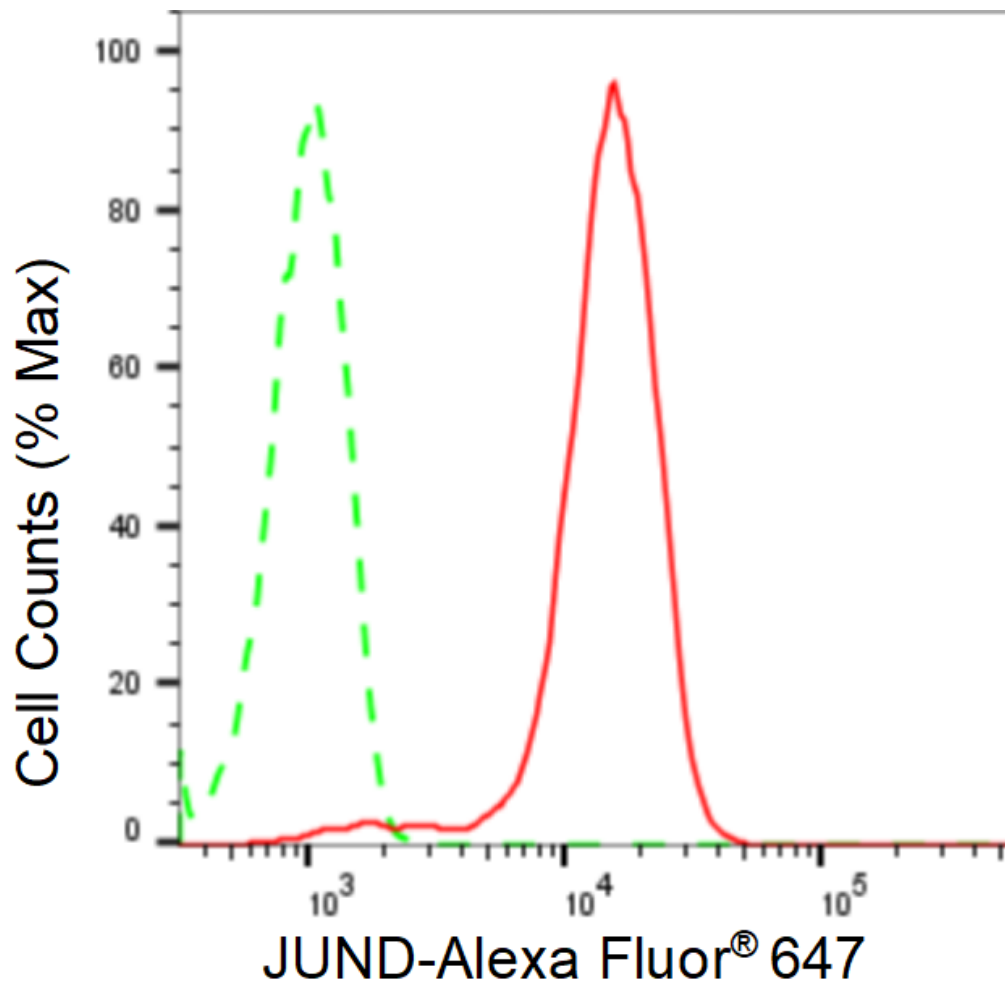
Store at -20 °C for one year.

Recommended Dilutions

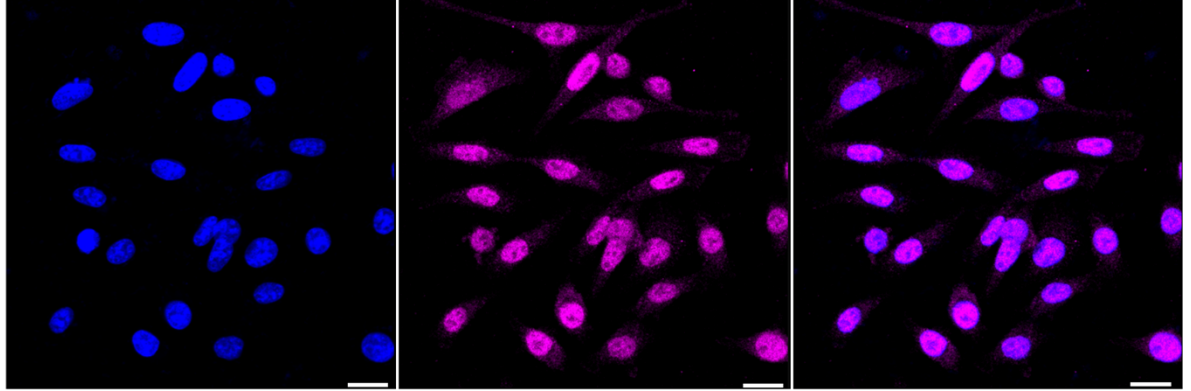
Western Blotting (WB): 1:1,000-1:5,000 Flow Cytometry (FCM): 1:2,000
Immunocytochemistry (IC): 1:1,000

Protocols

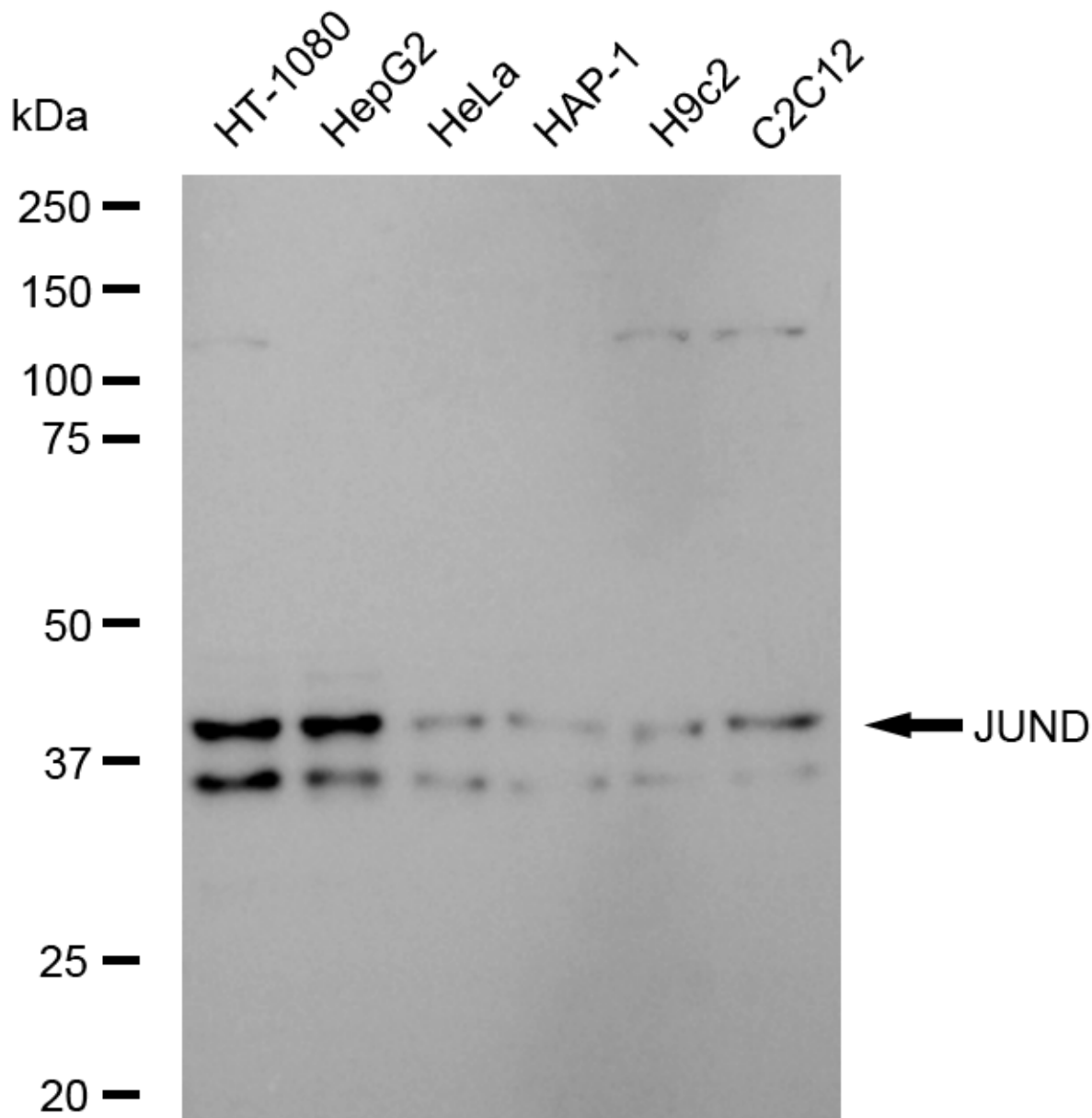
For general and specific antibody protocols please visit our website. Read all instructions before using this product.



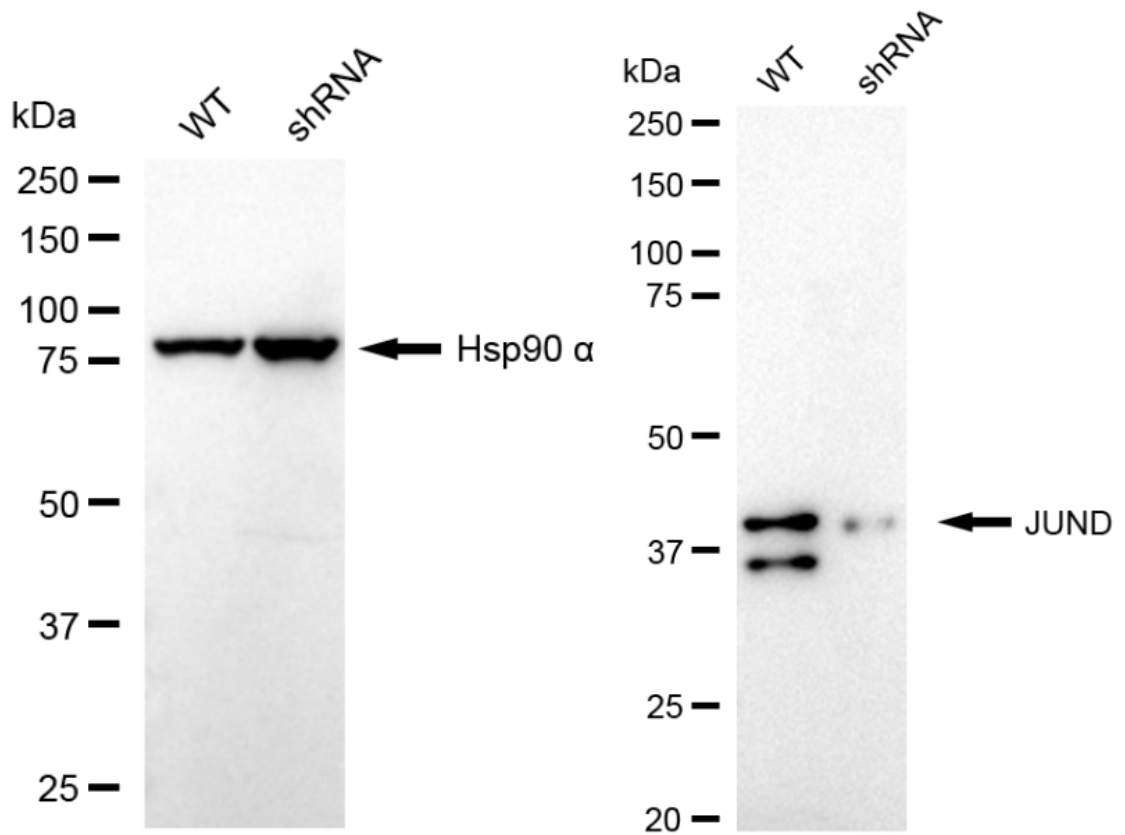
Flow cytometric analysis of JUND expression in HepG2 cells using JUND antibody 1:2,000. Green, isotype control; red, JUND.



Immunocytochemical staining of HepG2 cells with anti-JUND antibody 1:1,000. Nuclei were stained blue with DAPI; JUND was stained magenta with Alexa Fluor® 647. Images were taken using Leica stellaris 5. Protein abundance based on laser Intensity and smart gain: Medium. Scale bar: 20 μ m.



Western blotting analysis using anti-JUND antibody 1:5,000 and HRP-conjugated goat anti-rabbit secondary antibody 1:20,000 respectively. Image was developed using FeQ™ ECL Substrate Kit .



Western blotting analysis using anti-JunD antibody 1:5,000 and HRP-conjugated goat anti-rabbit secondary antibody 1:20,000 respectively. Image was developed using NaQ™ ECL Substrate Kit .