



SunLong Biotech Co.,LTD  
Tel: 0086-571- 56623320 Fax:0086-571- 56623318  
E-mail:sales@sunlongbiotech.com  
www.sunlongbiotech.com

## [KD-Validated] Anti-ITPK1 Rabbit Monoclonal Antibody

Cat No.: KD-10511

### Aliases:

ITPK1; Inositol-Tetrakisphosphate 1-Kinase; Inositol 1,3,4-Trisphosphate 5/6-Kinase; Ins(1,3,4)P(3) 5/6-Kinase; Inositol 1,3,4-Triphosphate 5/6 Kinase; Inositol-Triphosphate 5/6-Kinase; EC 2.7.1.134; EC 2.7.1.159; ITRPK1

### Background:

UniProt Entry: [Q13572](#);NCBI Gene Entry: [3705](#)

### Application Information

Molecular Weight: Predicted, 46 kDa, observed, 42 kDa Clonality: Rabbit monoclonal antibody Clone ID: 24GB6020 Species Reactivity: Human Applications Tested: Western Blotting (WB), Flow Cytometry (FCM), Immunocytochemistry (IC)

### Immunogen

A synthesized peptide derived from human ITPK1

### Isotype

Rabbit IgG

### Storage Buffer

Supplied in PBS (pH 7.4) containing 50% glycerol, and 0.02% sodium azide.

## Storage

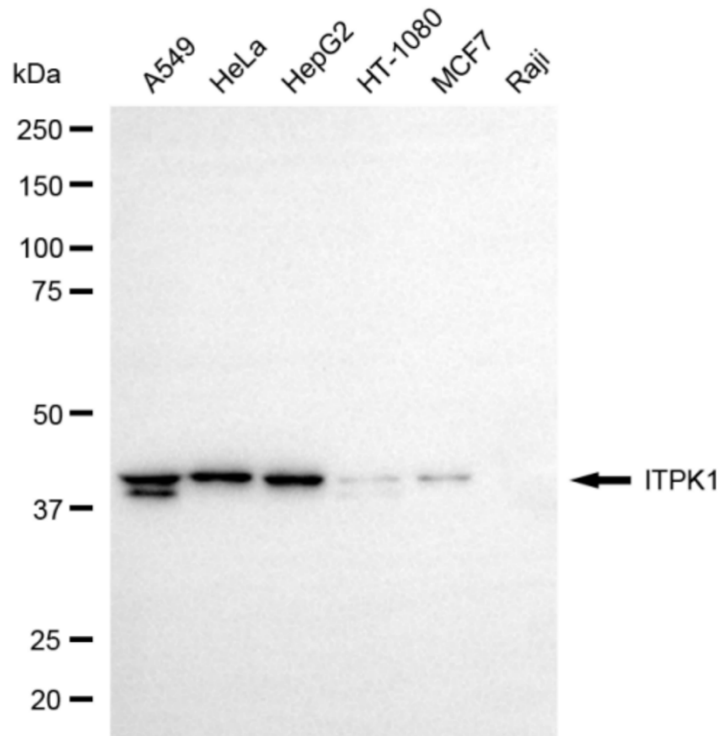
Store at -20 °C for one year.

## Recommended Dilutions

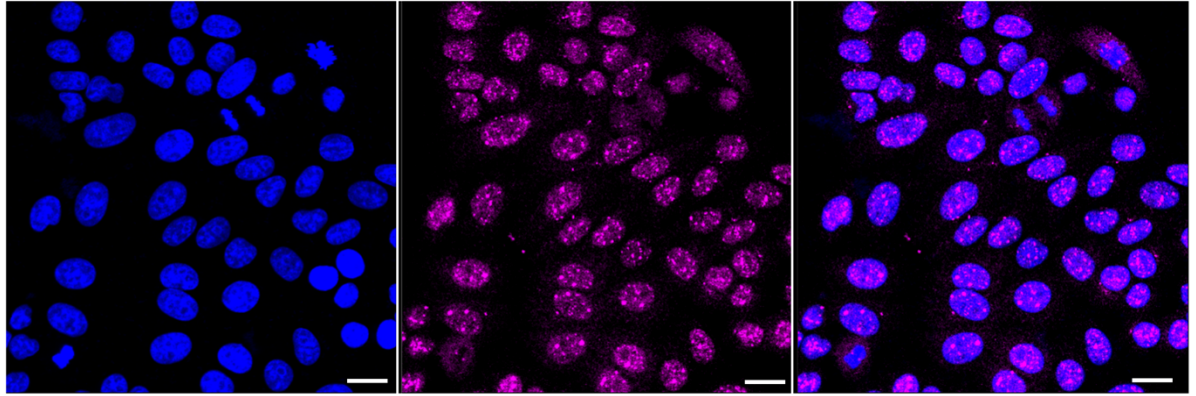
Western Blotting (WB): 1:1,000-1:5,000 Flow Cytometry (FCM): 1:2,000  
Immunocytochemistry (IC): 1:1,000

## Protocols

For general and specific antibody protocols please visit our website. Read all instructions before using this product.



Western blotting analysis using anti-ITPK1 antibody 1:5,000 and HRP-conjugated goat anti-rabbit secondary antibody 1:20,000 respectively. Image was developed using NaQ™ ECL Substrate Kit 1:5,000 and HRP-conjugated goat anti-rabbit secondary antibody 1:20,000 respectively. Image was developed using NaQ™ ECL Substrate Kit 1:2,000. Green, isotype control; red, ITPK1.



Immunocytochemical staining of HepG2 cells with anti-ITPK1 antibody 1:1,000. Nuclei were stained blue with DAPI; ITPK1 was stained magenta with Alexa Fluor® 647. Images were taken using Leica stellaris 5. Protein abundance based on laser Intensity and smart gain: Medium. Scale bar: 20  $\mu\text{m}$ .