



SunLong Biotech Co.,LTD  
Tel: 0086-571- 56623320 Fax:0086-571- 56623318  
E-mail:sales@sunlongbiotech.com  
www.sunlongbiotech.com

## [KD-Validated] Anti-Integrin beta 3 Rabbit Monoclonal Antibody

Cat No.: KD-10510

### Aliases:

Integrin Subunit Beta 3; GPIIIa; CD61; GP3A; Integrin, Beta 3 (Platelet Glycoprotein IIIa, Antigen CD61); Platelet Membrane Glycoprotein IIIa; Integrin Beta-3; Antigen CD61; Integrin Beta Chain, Beta 3; Platelet Glycoprotein IIIa; Integrin Beta 3; CD61 Antigen; BDPLT16; BDPLT24; BDPLT2; GT2; GT

### Background:

UniProt Entry: [P05106](#);NCBI Gene Entry: [3690](#)

### Application Information

Molecular Weight: Predicted, 87 kDa, observed, 103 kDa Clonality: Rabbit monoclonal antibody Clone ID: 23GB900 Species Reaceivity: Mouse Appltseions Tsed: Western Blotting (WB), Flow Cytometry (FCM)

### Immunogen

A synthesized peptide derived from human Integrin beta 3

### Isotype

Rabbit IgG

### Storage Buffer

Supplied in PBS (pH 7.4) containing 50% glycerol, and 0.02% sodium azide.

### Storage

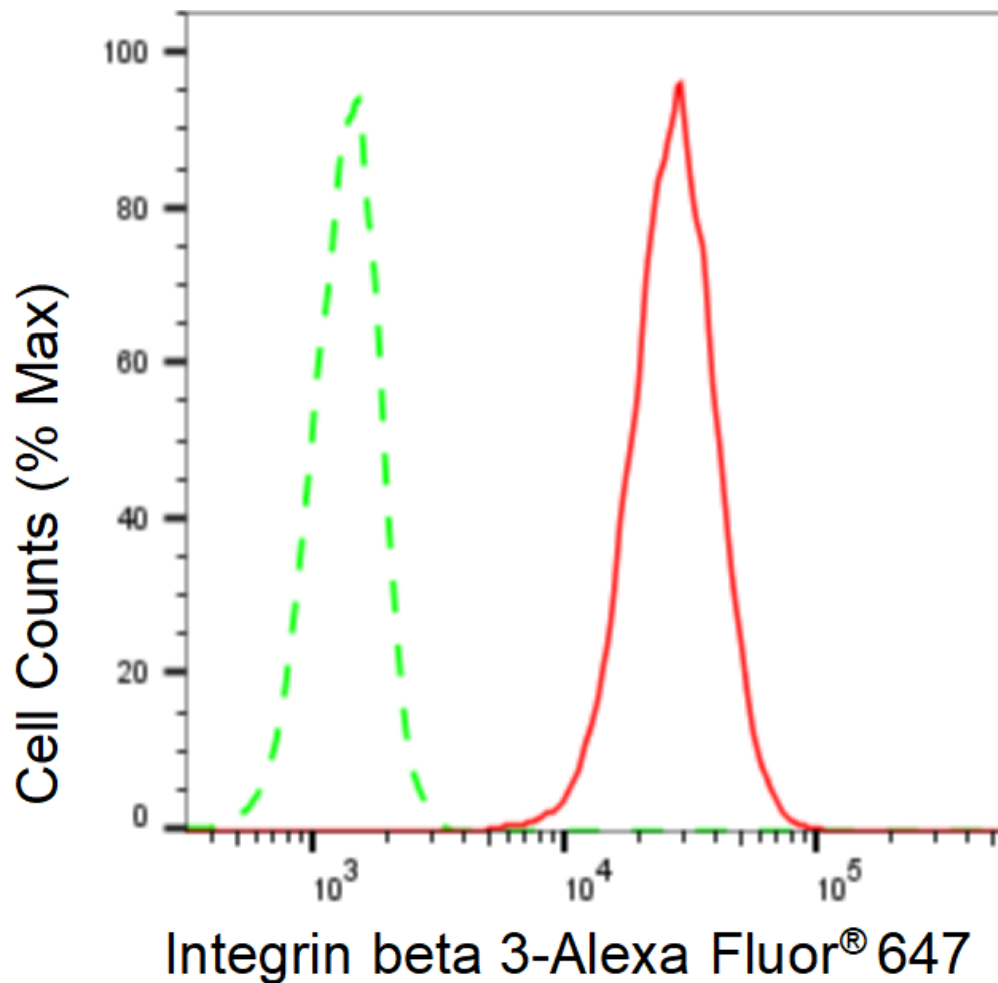
Store at -20 °C for one year.

### Recommended Dilutions

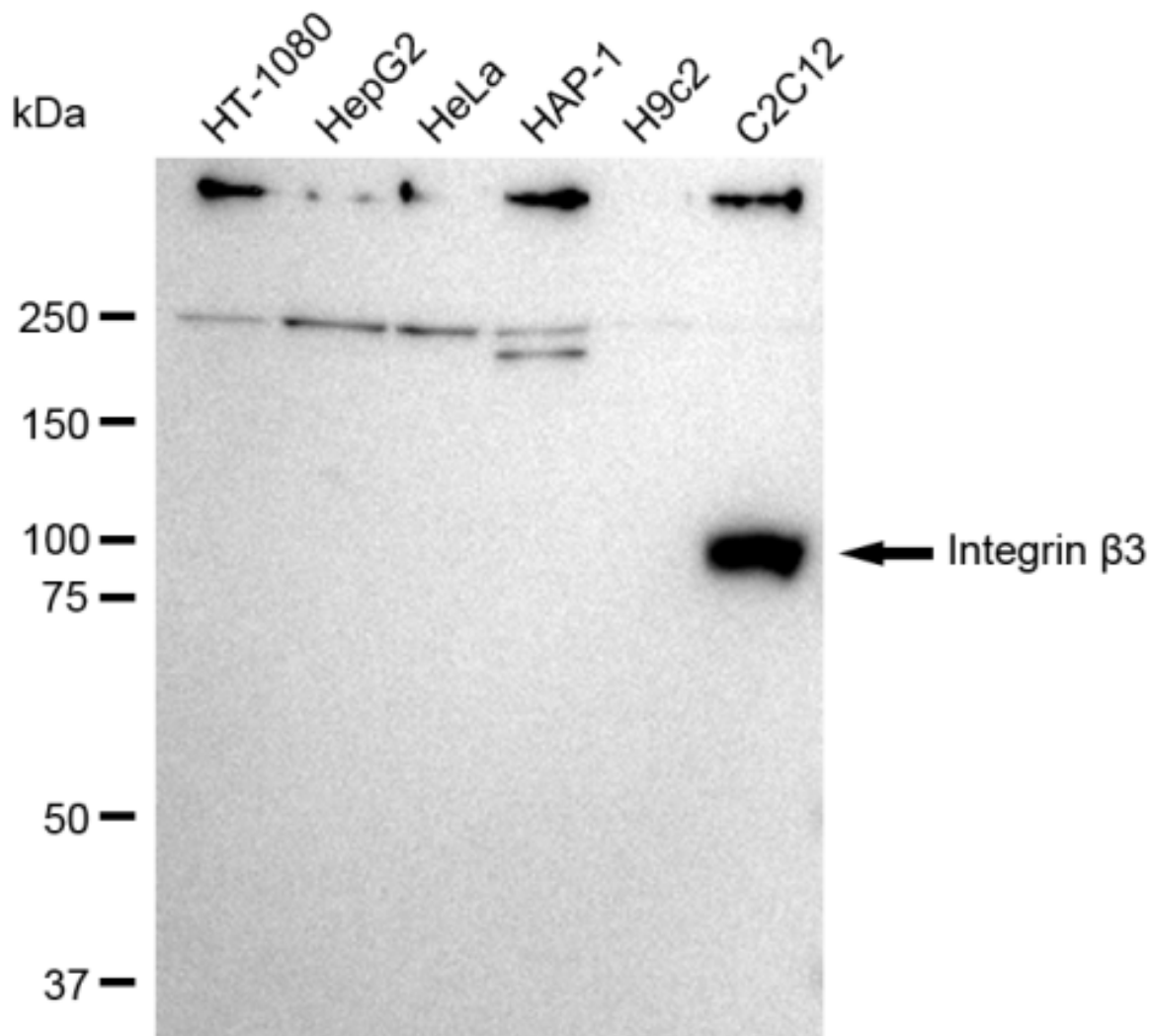
Western Blotting (WB): 1:1,000-1:5,000 Flow Cytometry (FCM): 1:2,000

### Protocols

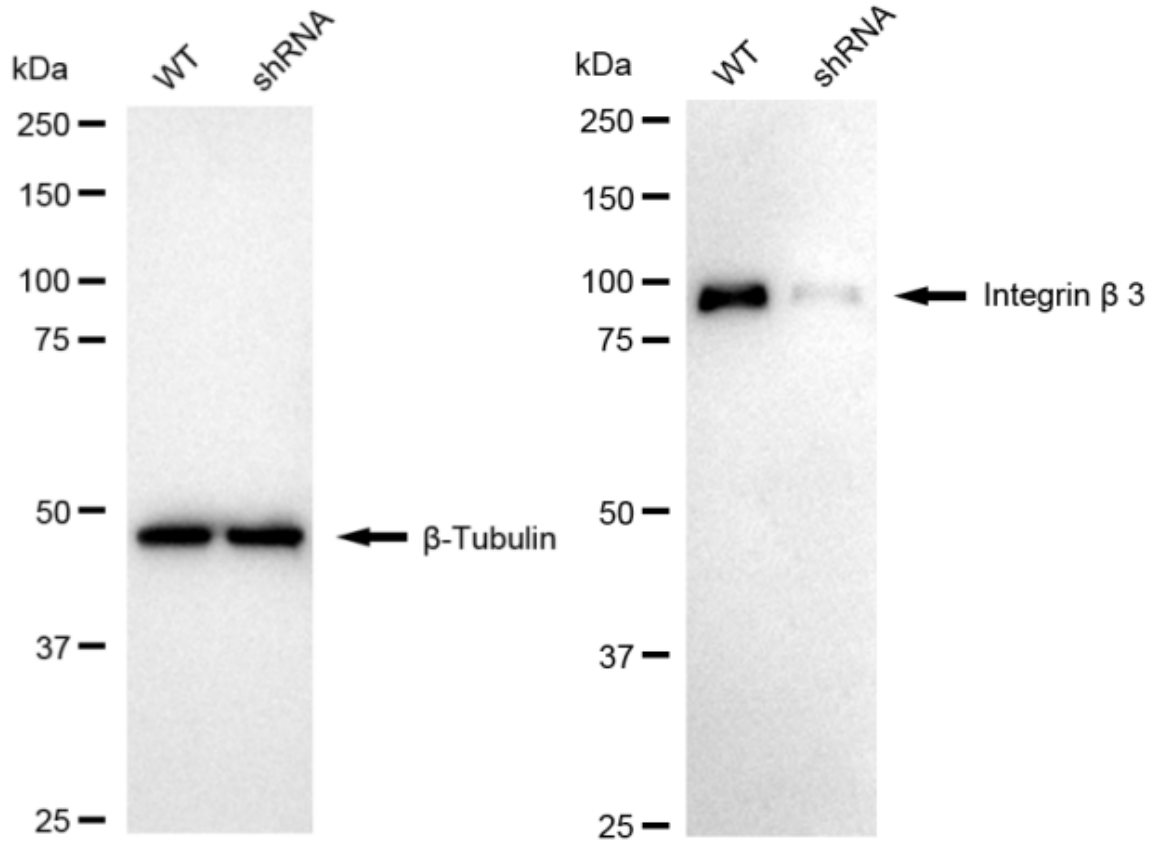
For general and specific antibody protocols please visit our website. Read all instructions before using this product.



Flow cytometric analysis of Integrin beta 3 expression in C2C12 cells using Integrin beta 3 antibody 1:2,000. Green, isotype control; red, Integrin beta 3.



Western blotting analysis using anti-Integrin  $\beta 3$  antibody 1:5,000 and HRP-conjugated goat anti-rabbit secondary antibody 1:20,000 respectively. Image was developed using FeQ™ ECL Substrate Kit .



Western blotting analysis using anti-integrin beta 3 antibody 1:5,000 and HRP-conjugated goat anti-rabbit secondary antibody 1:20,000 respectively. Image was developed using NaQ™ ECL Substrate Kit .