



SunLong Biotech Co.,LTD
Tel: 0086-571- 56623320 Fax:0086-571- 56623318
E-mail:sales@sunlongbiotech.com
www.sunlongbiotech.com

[KD-Validated] Anti-Integrin β 1/CD29 Rabbit Monoclonal Antibody

Cat No.: KD-10509

Aliases:

GPIIA; MSK12; CD29; FN1; FN2; Integrin, Beta 1 (Fibronectin Receptor, Beta Polypeptide, Antigen CD29 Includes MDF2, MSK12); Glycoprotein IIA; Integrin Beta-1; Very Late Activation Protein, Beta Polypeptide; Fibronectin Receptor Subunit Beta; Integrin VLA-4 Beta Subunit; VLA-4 Subunit Beta; Integrin Beta 1; CD29 Antigen; VLA-BETA; VLAB

Background:

UniProt Entry: [P05556](#);NCBI Gene Entry: [3688](#)

Application Information

Molecular Weight: Predicted, 88 kDa, observed, 115/135 kDa Clonality: Rabbit monoclonal antibody Clone ID: 23GB885 Species Reactivity: Human Applications Used: Western Blotting (WB), Flow Cytometry (FCM), Immunocytochemistry (IC)

Immunogen

A synthesized peptide derived from human integrin beta-1/CD29

Isotype

Rabbit IgG

Storage Buffer

Supplied in PBS (pH 7.4) containing 50% glycerol, and 0.02% sodium azide.

Storage

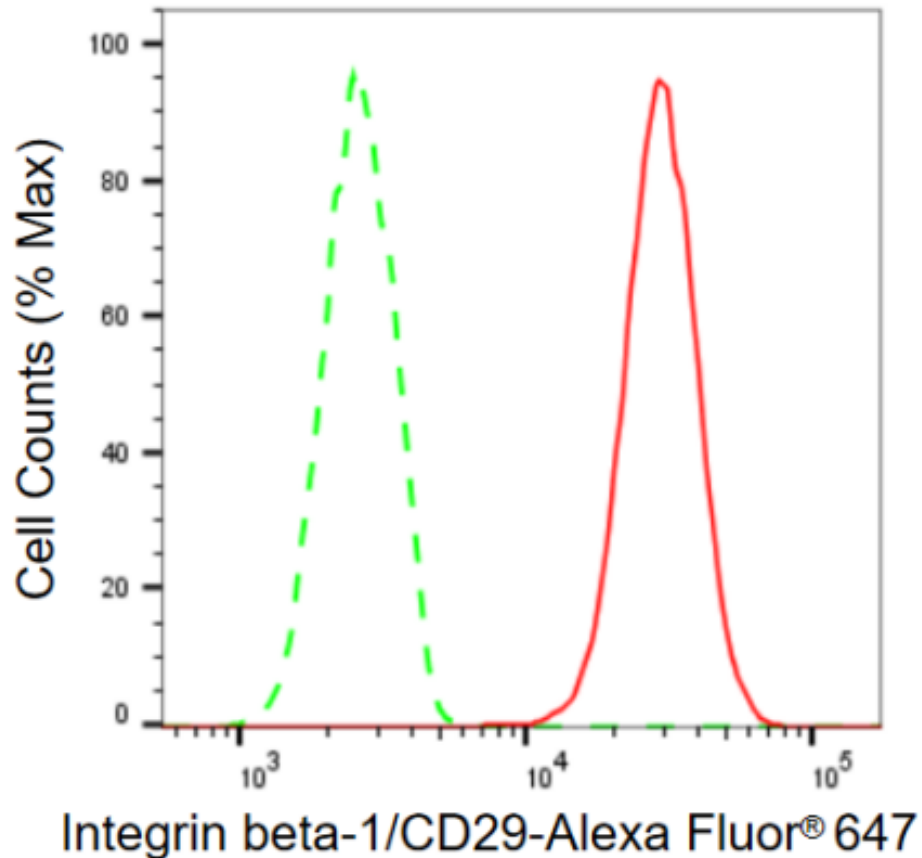
Store at -20 °C for one year.

Recommended Dilutions

Western Blotting (WB): 1:1,000-1:5,000 Flow Cytometry (FCM): 1:2,000
Immunocytochemistry (IC): 1:1,000

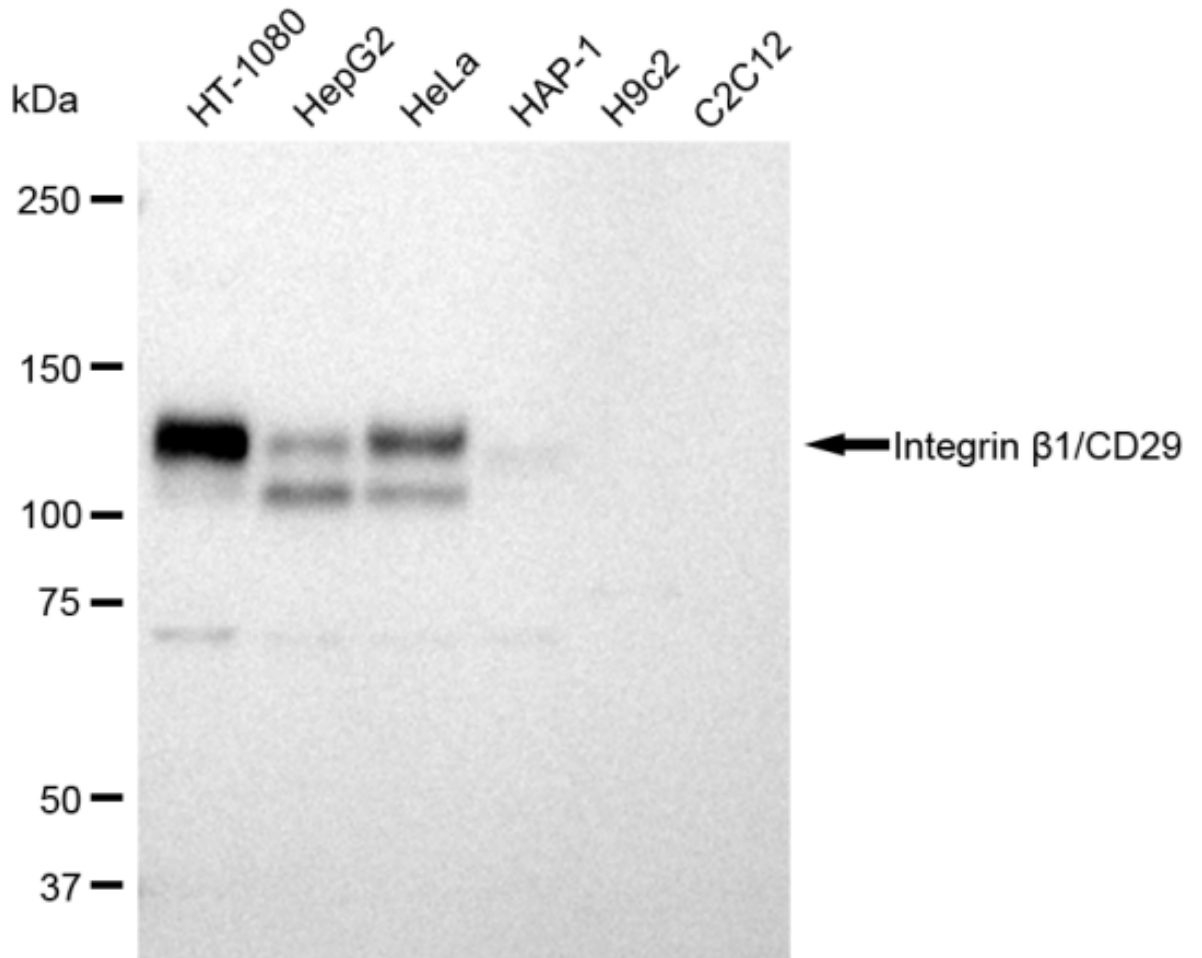
Protocols

For general and specific antibody protocols please visit our website. Read all instructions before using this product.

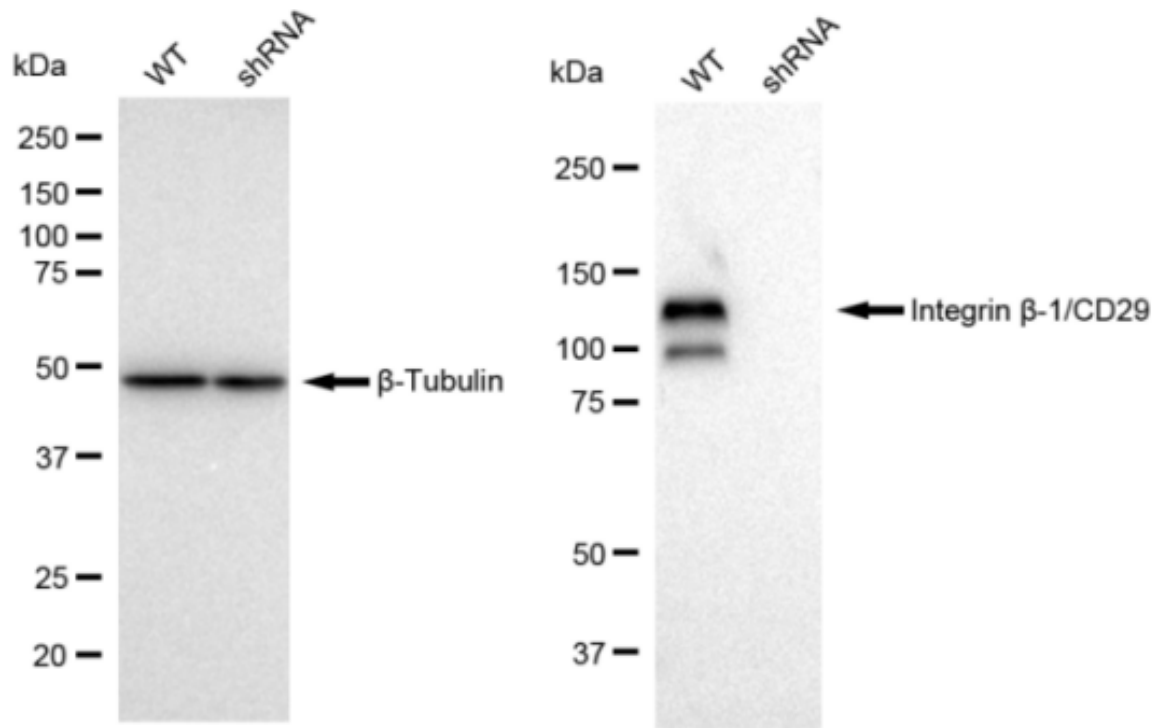


Flow cytometric analysis of Integrin beta-1/CD29 expression in HT-1080 cells using Integrin beta-1/CD29 antibody 1:1,000. Nuclei were stained blue with DAPI; Integrin beta-1/CD29 was stained magenta with Alexa Fluor® 647. Images were taken using

Leica stellaris 5. Protein abundance based on laser Intensity and smart gain: Medium.
Scale bar: 20 μm .



Western blotting analysis using anti-Integrin β 1/CD29 antibody . Total cell lysates (30 μg) from various cell lines were loaded and separated by SDS-PAGE. The blot was incubated with anti-Integrin β 1/CD29 antibody and HRP-conjugated goat anti rabbit secondary antibody respectively. Image was developed using FeQTM ECL Substrate Kit .



Western blotting analysis using anti-Integrin beta-1/CD29 antibody . Integrin beta-1/CD29 expression in wild type (WT) and Integrin beta-1/CD29 shRNA knockdown (KD) HeLa cells with 30 μ g of total cell lysates. β -Tubulin serves as a loading control. The blot was incubated with anti-Integrin beta-1/CD29 antibody and HRP-conjugated goat anti rabbit secondary antibody respectively. Image was developed using FeQTM ECL Substrate Kit .