



SunLong Biotech Co.,LTD
Tel: 0086-571- 56623320 Fax:0086-571- 56623318
E-mail:sales@sunlongbiotech.com
www.sunlongbiotech.com

[KD-Validated] Anti-Integrin β 1 Rabbit Monoclonal Antibody

Cat No.: KD-10508

Aliases:

Integrin Subunit Beta 1; GPIIA; MSK12; CD29; FN1B; MDF2; Integrin, Beta 1 (Fibronectin Receptor, Beta Polypeptide, Antigen CD29 Includes MDF2, MSK12); Glycoprotein Ila; Integrin Beta-1; Very Late Activation Protein, Beta Polypeptide; Fibronectin Receptor Subunit Beta; Integrin VLA-4 Beta Subunit; VLA-4 Subunit Beta; Integrin Beta 1; CD29 Antigen; VLA-BETA; VLAB

Background:

UniProt Entry: [P05556](#);NCBI Gene Entry: [3688](#)

Application Information

Molecular Weight: Predicted, 88 kDa, observed, 130-150 kDa Clonality: Rabbit monoclonal antibody Clone ID: 23GB895 Species Reactivity: Human, Mouse, Rat Applications Tested: Western Blotting (WB), Flow Cytometry (FCM), Immunocytochemistry (IC)

Immunogen

A synthesized peptide derived from human Integrin beta 1

Isotype

Rabbit IgG

Storage Buffer

Supplied in PBS (pH 7.4) containing 50% glycerol, and 0.02% sodium azide.

Storage

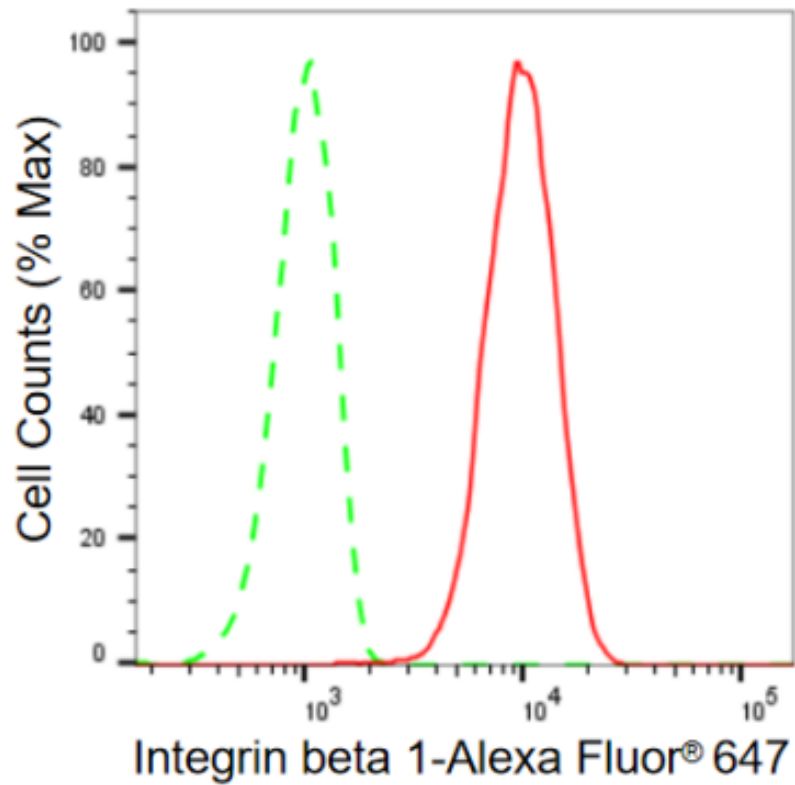
Store at -20 °C for one year.

Recommended Dilutions

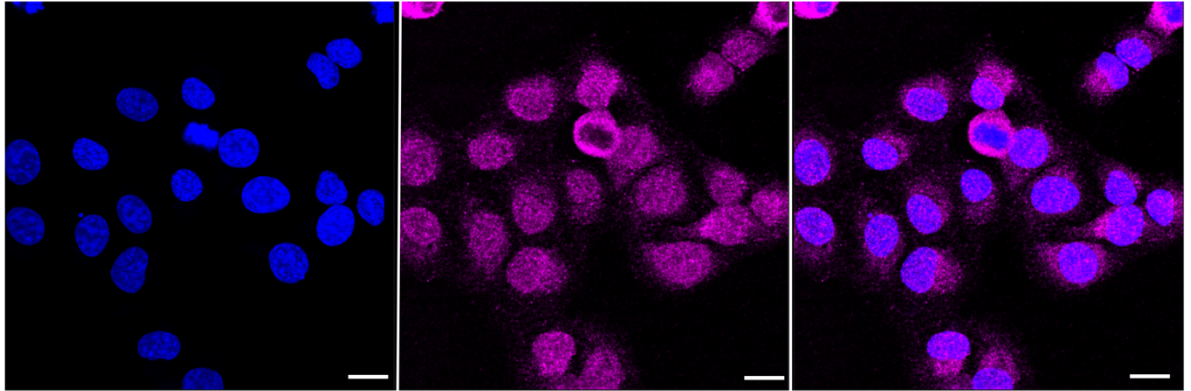
Western Blotting (WB): 1:1,000-1:5,000 Flow Cytometry (FCM): 1:2,000
Immunocytochemistry (IC): 1:1,000

Protocols

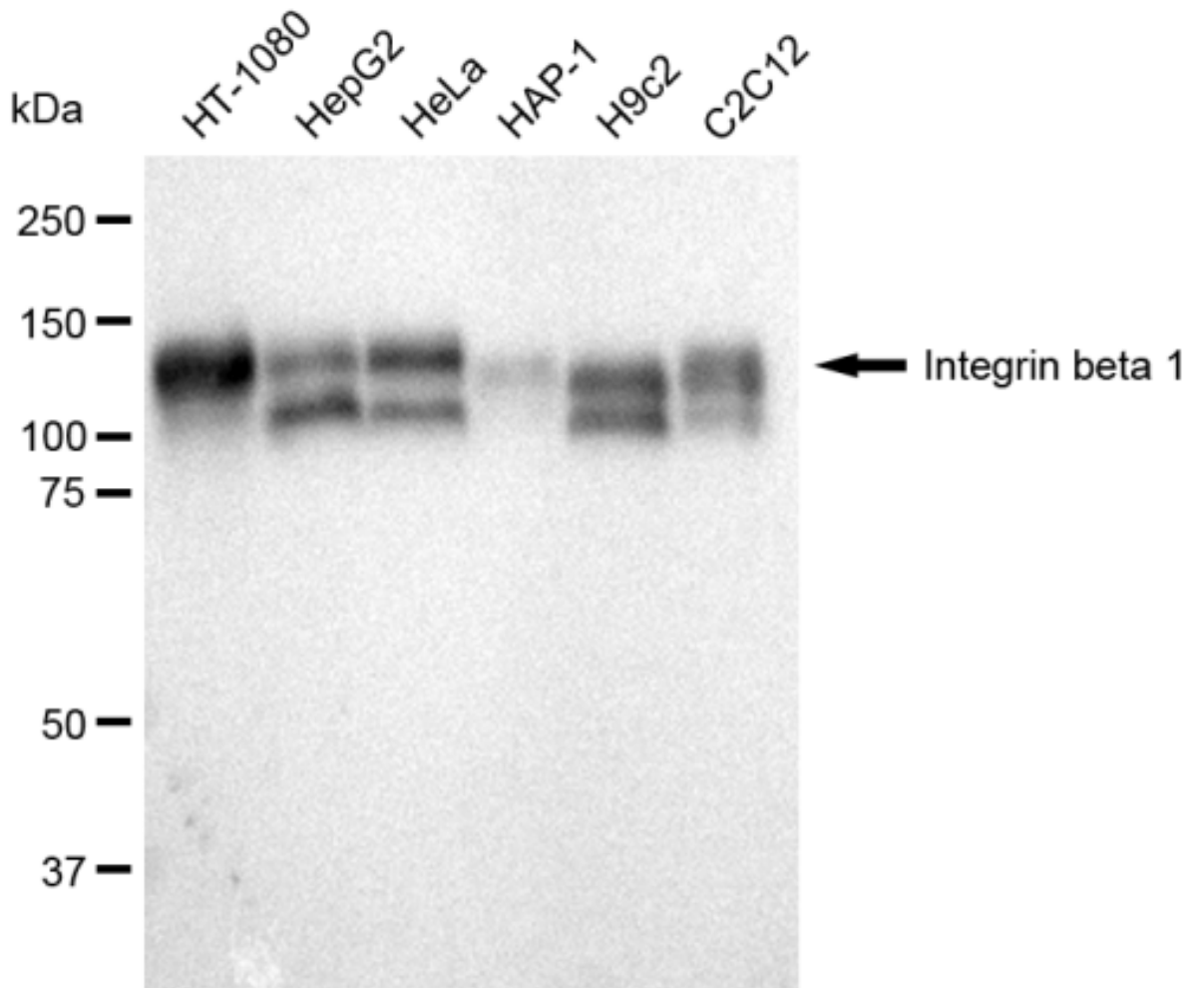
For general and specific antibody protocols please visit our website. Read all instructions before using this product.



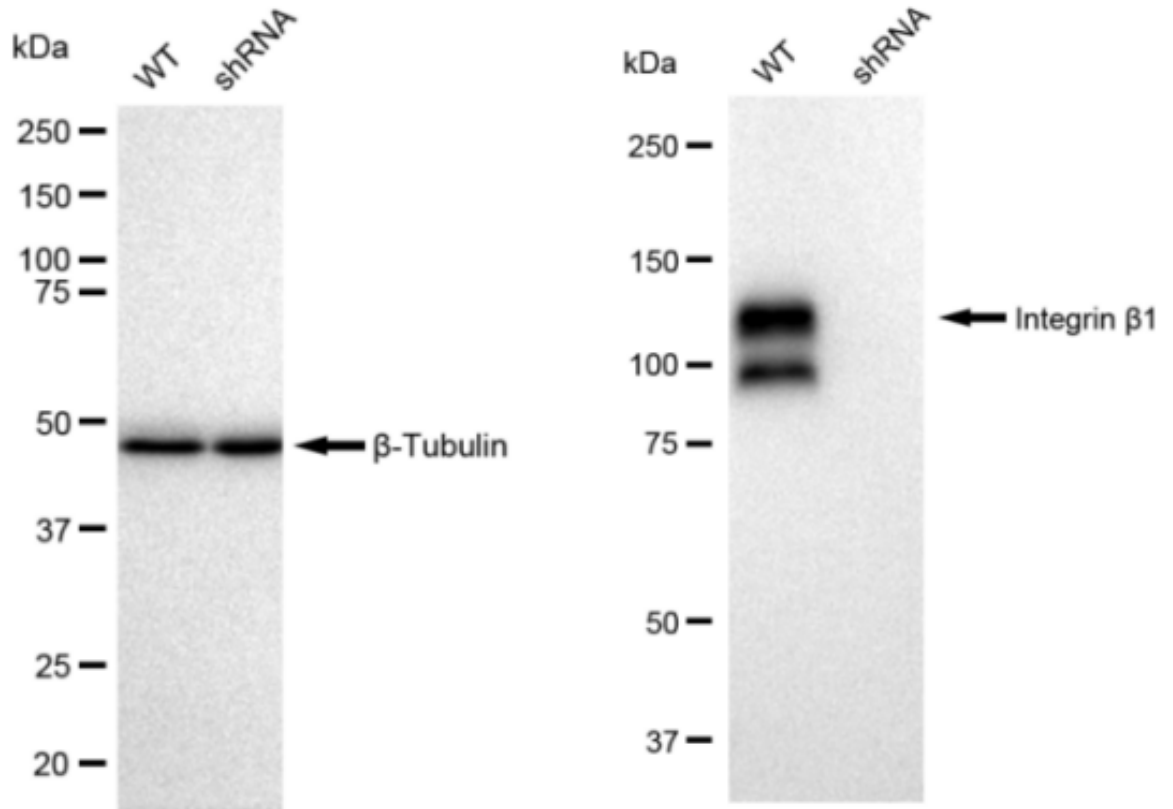
Flow cytometric analysis of Integrin beta 1 expression in HT-1080 cells using Integrin beta 1 antibody 1:2,000. Green, isotype control; red, Integrin beta 1.



Immunocytochemical staining of HT-1080 cells with Integrin beta 1 antibody 1:1,000. Nuclei were stained blue with DAPI; Integrin beta 1 was stained magenta with Alexa Fluor® 647. Images were taken using Leica stellaris 5. Protein abundance based on laser Intensity and smart gain: Low. Scale bar: 20 μ m.



Western blotting analysis using anti-Integrin β 1 antibody . Total cell lysates (30 μ g) from various cell lines were loaded and separated by SDS-PAGE. The blot was incubated with anti-Integrin β 1 antibody and HRP-conjugated goat anti rabbit secondary antibody respectively. Image was developed using FeQ™ ECL Substrate Kit .



Western blotting analysis using anti-Integrin beta 1 antibody . Integrin beta 1 expression in wild type (WT) and Integrin beta 1 shRNA knockdown (KD) HeLa cells with 30 μ g of total cell lysates. β -Tubulin serves as a loading control. The blot was incubated with anti-Integrin beta 1 antibody and HRP-conjugated goat anti rabbit secondary antibody respectively. Image was developed using FeQ™ ECL Substrate Kit .