



SunLong Biotech Co.,LTD  
Tel: 0086-571- 56623320 Fax:0086-571- 56623318  
E-mail:sales@sunlongbiotech.com  
www.sunlongbiotech.com

## **[KD-Validated] Anti-Integrin $\beta$ 1 Rabbit Monoclonal Antibody**

Cat No.: KD-10507

### **Aliases:**

GPIIA; MSK12; CD29; FN1; FNRB; MDF2; Integrin, Beta 1 (Fibronectin Receptor, Beta Polypeptide, Antigen CD29 Includes MDF2, MSK12); Glycoprotein IIA; Integrin Beta-1; Very Late Activation Protein, Beta Polypeptide; Fibronectin Receptor Subunit Beta; Integrin VLA-4 Beta Subunit; VLA-4 Subunit Beta; Integrin Beta 1; CD29 Antigen; VLA-BETA; VLAB

### **Background:**

UniProt Entry: [P05556](#);NCBI Gene Entry: [3688](#)

### **Application Information**

Molecular Weight: Predicted, 88 kDa, observed, 115/135 kDa Clonality: Rabbit monoclonal antibody Clone ID: 23GB890 Species Reactivity: Human Applications Used: Western Blotting (WB), Immunocytochemistry (IC)

### **Immunogen**

A synthesized peptide derived from human Integrin beta 1

### **Isotype**

Rabbit IgG

### **Storage Buffer**

Supplied in PBS (pH 7.4) containing 50% glycerol, and 0.02% sodium azide.

#### **Storage**

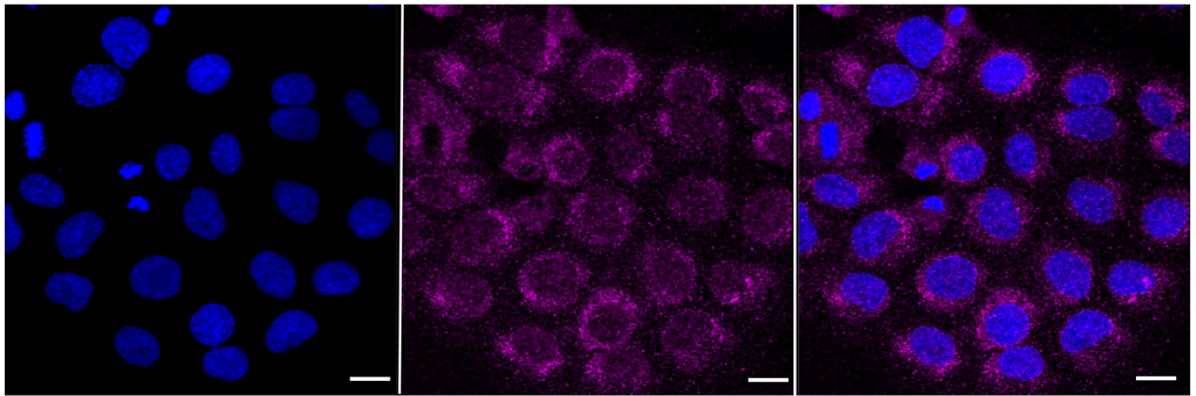
Store at -20 °C for one year.

#### **Recommended Dilutions**

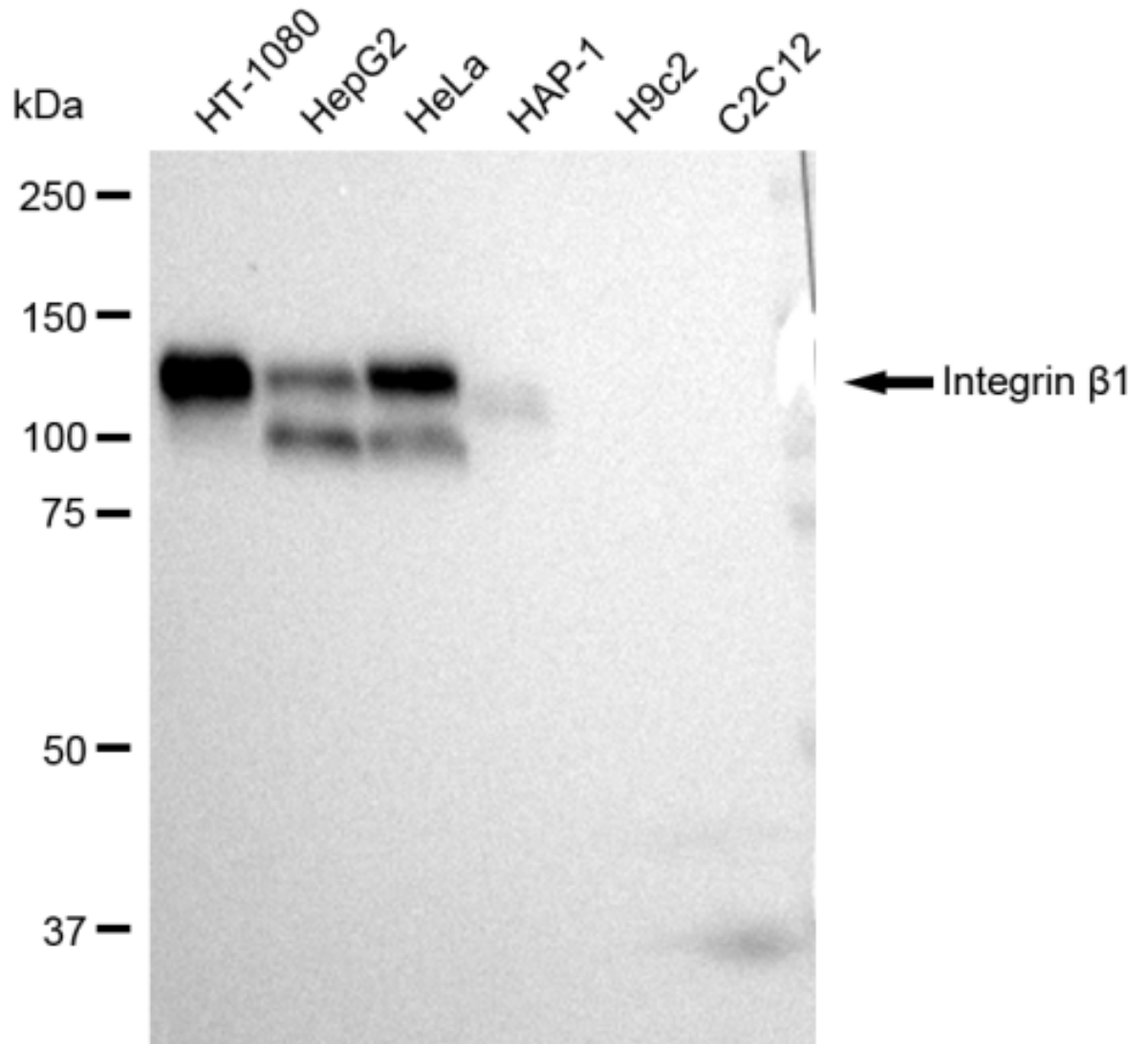
Western Blotting (WB): 1:1,000-1:5,000 Immunocytochemistry (IC): 1:1,000

#### **Protocols**

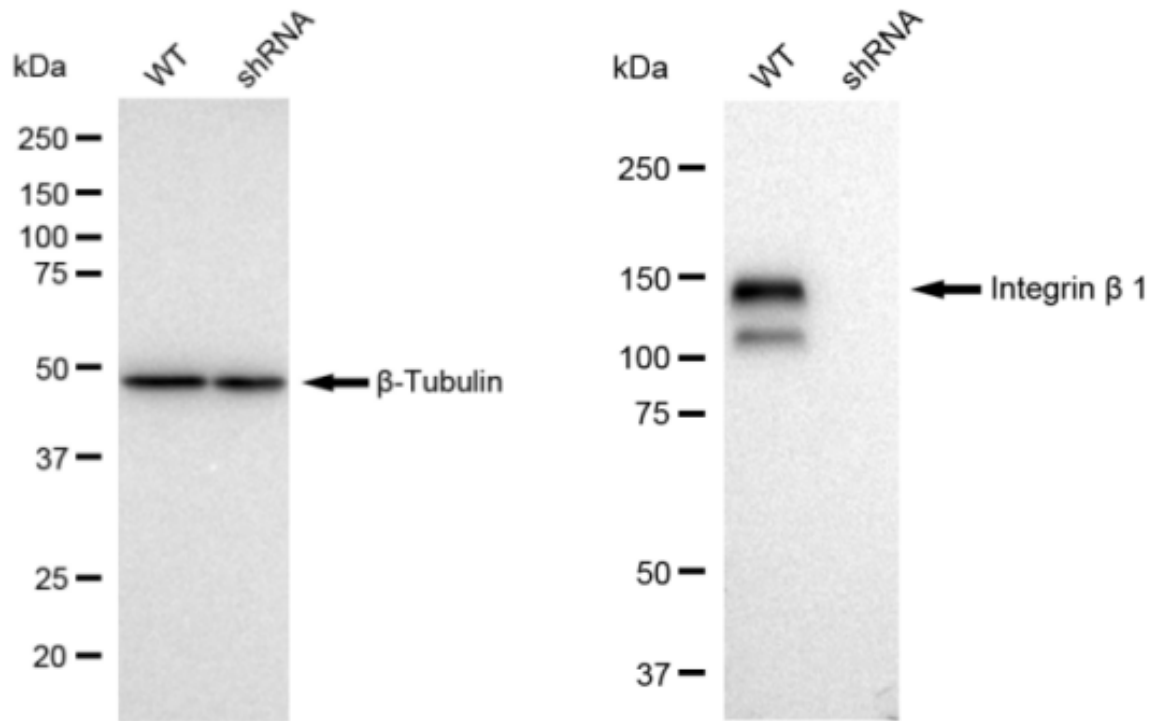
For general and specific antibody protocols please visit our website. Read all instructions before using this product.



Immunocytochemical staining of HT-1080 cells with Integrin beta 1 antibody 1:1,000. Nuclei were stained blue with DAPI; Integrin beta 1 was stained magenta with Alexa Fluor® 647. Images were taken using Leica stellaris 5. Protein abundance based on laser Intensity and smart gain: Medium. Scale bar: 20 µm.



Western blotting analysis using anti-Integrin  $\beta 1$  antibody . Total cell lysates (30  $\mu$ g) from various cell lines were loaded and separated by SDS-PAGE. The blot was incubated with anti-Integrin  $\beta 1$  antibody and HRP-conjugated goat anti rabbit secondary antibody respectively. Image was developed using FeQ<sup>TM</sup> ECL Substrate Kit .



Western blotting analysis using anti-Integrin beta 1 antibody . Integrin beta 1 expression in wild type (WT) and Integrin beta 1 shRNA knockdown (KD) HeLa cells with 30  $\mu$ g of total cell lysates.  $\beta$ -Tubulin serves as a loading control. The blot was incubated with anti-Integrin beta 1 antibody and HRP-conjugated goat anti rabbit secondary antibody respectively. Image was developed using FeQ™ ECL Substrate Kit .