



SunLong Biotech Co.,LTD  
Tel: 0086-571- 56623320 Fax:0086-571- 56623318  
E-mail:sales@sunlongbiotech.com  
www.sunlongbiotech.com

## **[KD-Validated] Anti-Integrin alpha 5 Rabbit Monoclonal Antibody**

Cat No.: KD-10502

### **Aliases:**

Integrin; Alpha 5 (Fibronectin Receptor,Alpha Polypeptide); VLA5A FNRA; CD49e; Fibronectin Receptor Subunit Alpha; Fibronectin Receptor Alpha Subunit; Integrin Alpha-F; Integrin Alpha-5; VLA-5; Very Late Activation Protein 5; Alpha Subunit; CD49 Antigen-Like Family Member E; CD49e Antigen

### **Background:**

UniProt Entry: [P08648](#);NCBI Gene Entry: [3678](#)

### **Application Information**

Molecular Weight: Predicted, 115 kDa, observed, 150 kDa Clonality: Rabbit monoclonal antibody Clone ID: 23GB1050 Species Reactivity: Human, Mouse, Rat Applications Tested: Western Blotting (WB), Flow Cytometry (FCM), Immunocytochemistry (IC)

### **Immunogen**

A synthesized peptide derived from human Integrin alpha 5

### **Isotype**

Rabbit IgG

### **Storage Buffer**

Supplied in PBS (pH 7.4) containing 50% glycerol, and 0.02% sodium azide.

### Storage

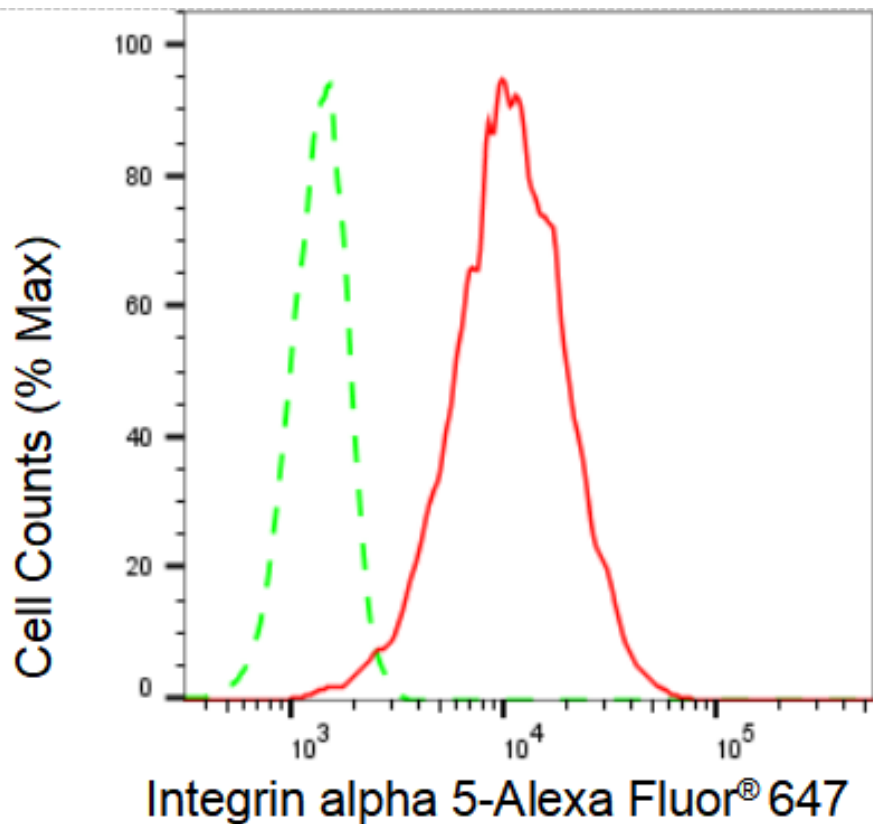
Store at -20 °C for one year.

### Recommended Dilutions

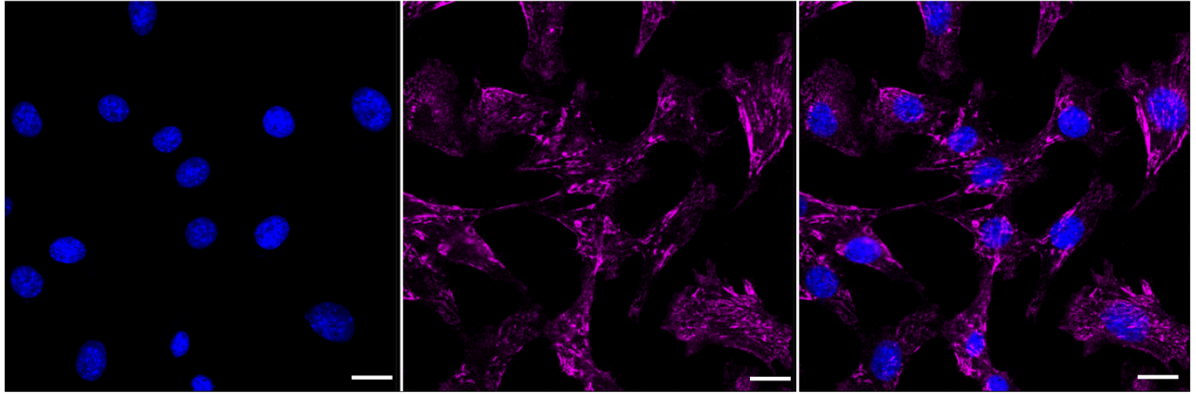
Western Blotting (WB): 1:1,000-1:5,000 Flow Cytometry (FCM): 1:2,000  
Immunocytochemistry (IC): 1:1,000

### Protocols

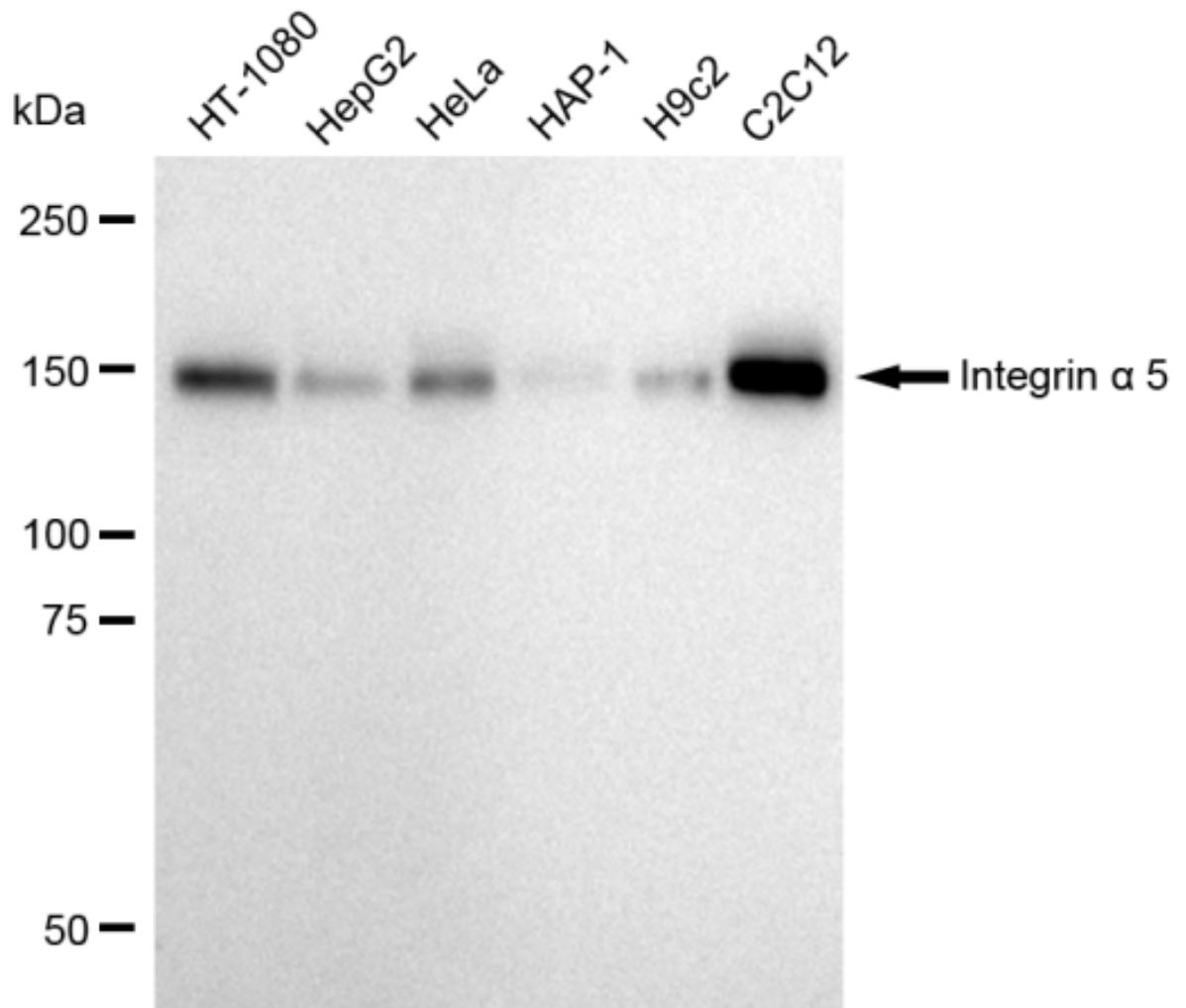
For general and specific antibody protocols please visit our website. Read all instructions before using this product.



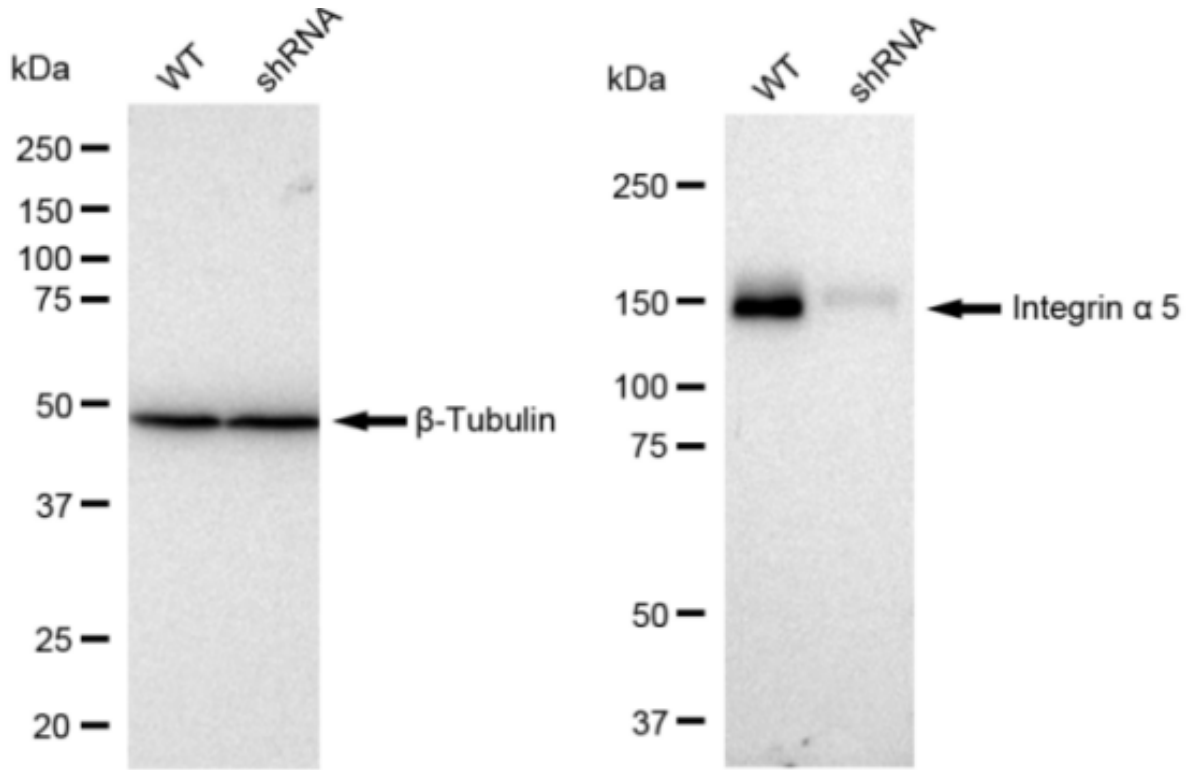
Flow cytometric analysis of Integrin alpha 5 expression in C2C12 cells using Integrin alpha 5 antibody 1:2,000. Green, isotype control; red, Integrin alpha 5.



Immunocytochemical staining of C2C12 cells with Integrin alpha 5 antibody 1:1,000. Nuclei were stained blue with DAPI; Integrin alpha 5 was stained magenta with Alexa Fluor® 647. Images were taken using Leica stellaris 5. Protein abundance based on laser Intensity and smart gain: High. Scale bar: 20  $\mu$ m.



Western blotting analysis using anti-Integrin alpha 5 antibody 1:5,000 and HRP-conjugated goat anti-rabbit secondary antibody 1:50,000 respectively. Image was developed using FeQ™ ECL Substrate Kit .



Western blotting analysis using anti-Integrin alpha 5 antibody 1:5,000 and HRP-conjugated goat anti-rabbit secondary antibody 1:20,000 respectively. Image was developed using FeQ™ ECL Substrate Kit .