



SunLong Biotech Co.,LTD
Tel: 0086-571- 56623320 Fax:0086-571- 56623318
E-mail:sales@sunlongbiotech.com
www.sunlongbiotech.com

[KD-Validated] Anti-Integrin alpha 5 Rabbit Monoclonal Antibody

Cat No.: KD-10501

Aliases:

CD49e; FNRA; Integrin, Alpha 5 (Fibronectin Receptor, Alpha Polypeptide); Fibronectin Receptor, Alpha Polypeptide; Fibronectin Receptor Subunit Alpha; CD49 Antigen-Like Family Member E; Integrin Alpha-5; Integrin Alpha-F; VLA-5; Very Late Activation Protein 5, Alpha Subunit; Fibronectin Receptor, Alpha Subunit; ITGA5/SLC9B1 Fusion; CD49e Antigen; VLA5A

Background:

UniProt Entry: [P08648](#);NCBI Gene Entry: [3678](#)

Application Information

Molecular Weight: Predicted, 115 kDa, observed, 150 kDa Clonality: Rabbit monoclonal antibody Clone ID: 23GB880 Species Reactivity: Human, Mouse, Rat Applications Tested: Western Blotting (WB), Flow Cytometry (FCM), Immunocytochemistry (IC)

Immunogen

A synthesized peptide derived from human integrin alpha 5

Isotype

Rabbit IgG

Storage Buffer

Supplied in PBS (pH 7.4) containing 50% glycerol, and 0.02% sodium azide.

Storage

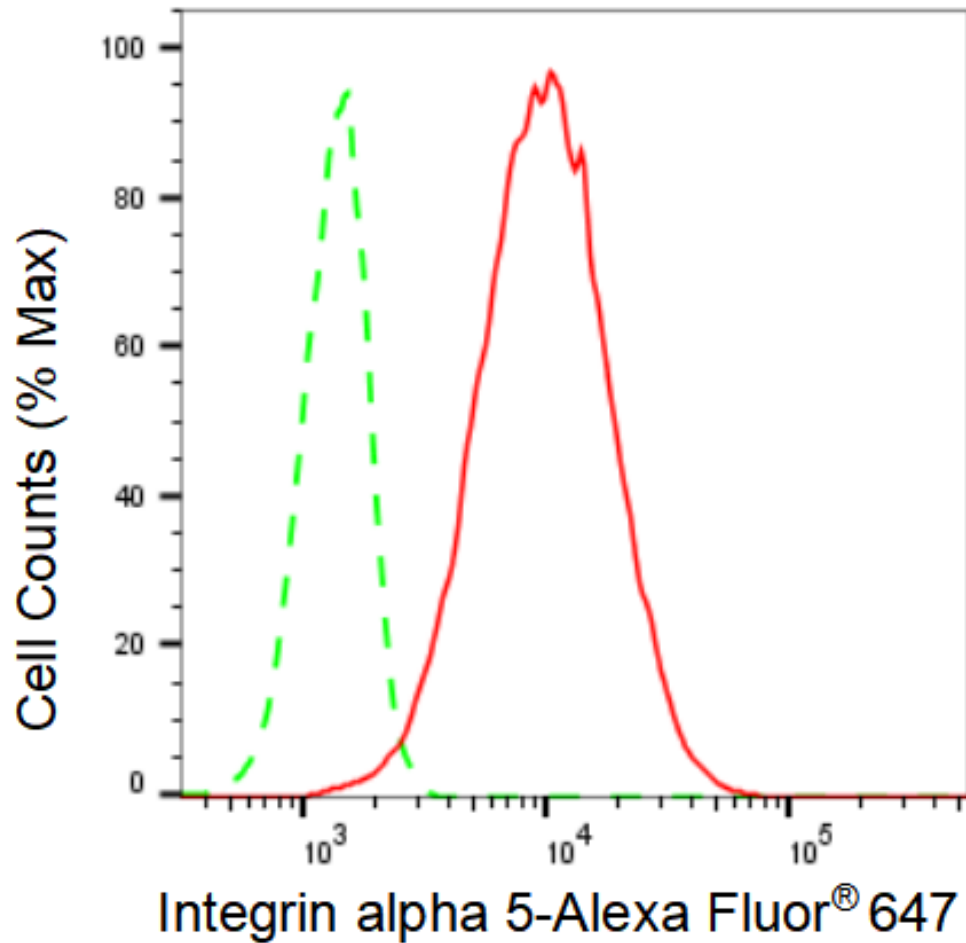
Store at -20 °C for one year.

Recommended Dilutions

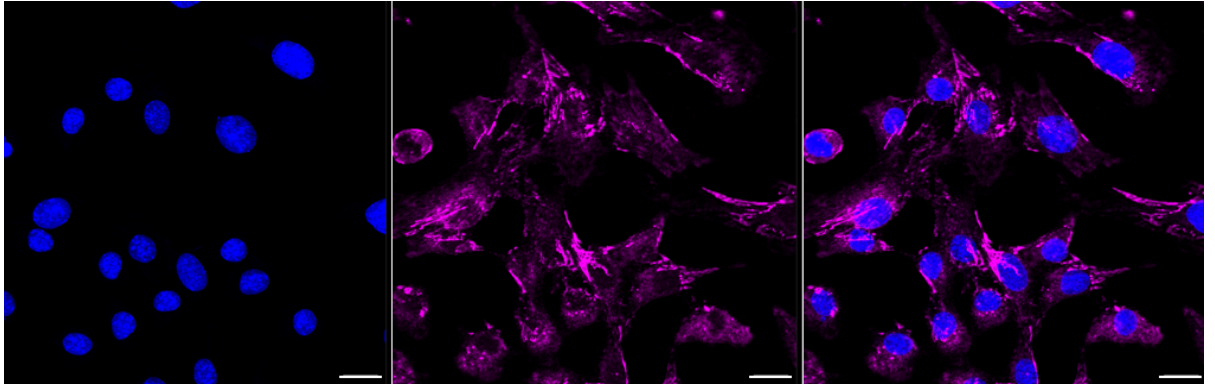
Western Blotting (WB): 1:1,000-1:5,000 Flow Cytometry (FCM): 1:2,000
Immunocytochemistry (IC): 1:1,000

Protocols

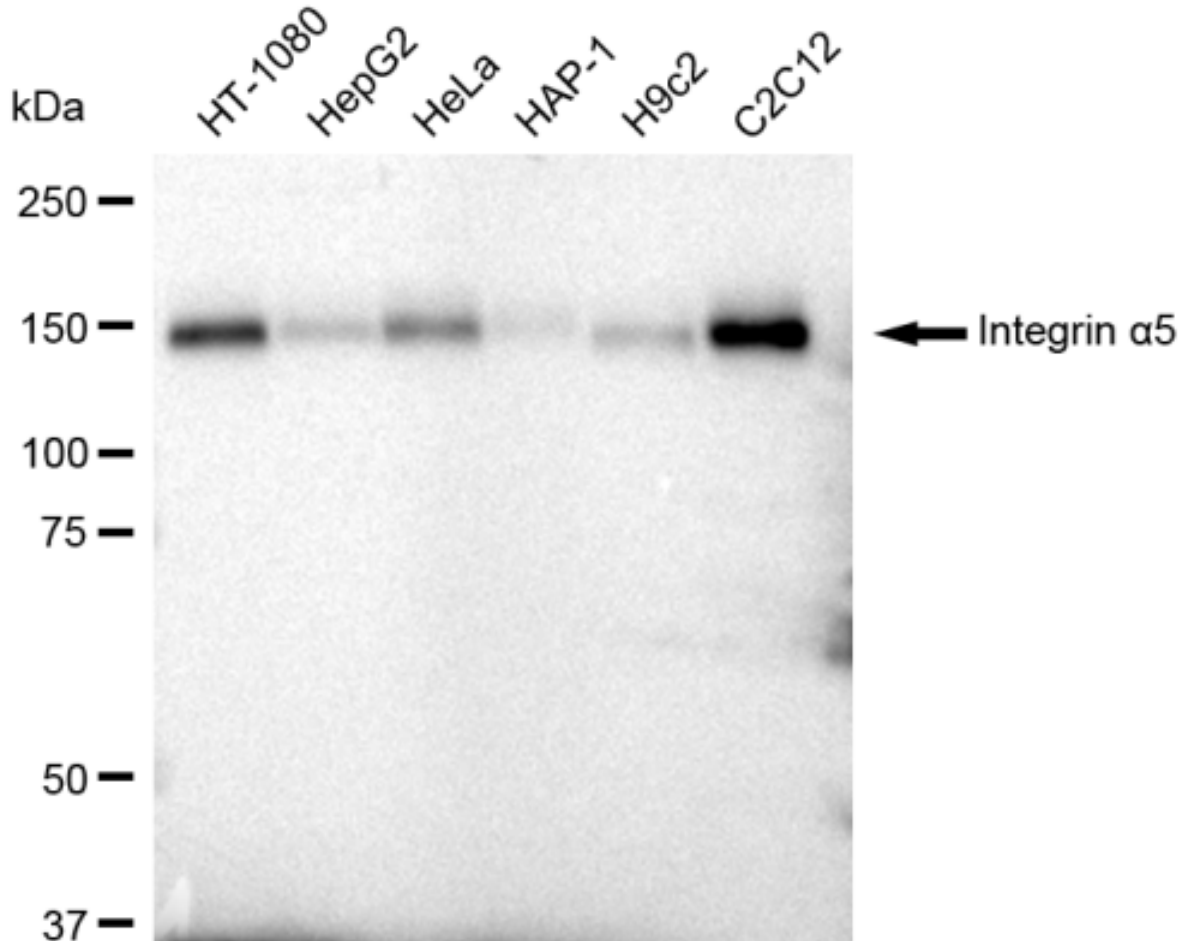
For general and specific antibody protocols please visit our website. Read all instructions before using this product.



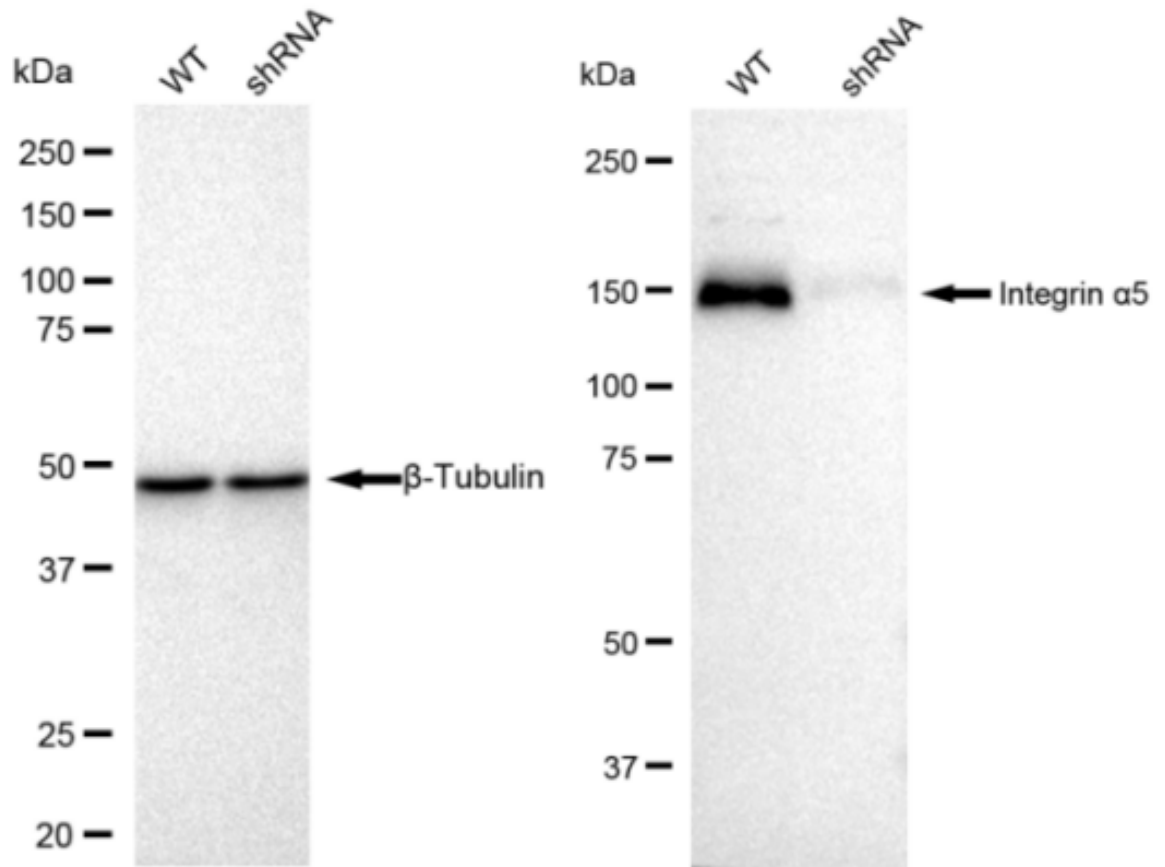
Flow cytometric analysis of Integrin alpha 5 expression in C2C12 cells using Integrin alpha 5 antibody 1:2,000. Green, isotype control; red, Integrin alpha 5.



Immunocytochemical staining of C2C12 cells with Integrin alpha 5 antibody 1:1,000. Nuclei were stained blue with DAPI; Integrin alpha 5 was stained magenta with Alexa Fluor® 647. Images were taken using Leica stellaris 5. Protein abundance based on laser Intensity and smart gain: Medium. Scale bar: 20 μ m.



Western blotting analysis using anti-Integrin α 5 antibody 1:5,000 and HRP-conjugated goat anti rabbit secondary antibody 1:50,000 respectively. Image was developed using FeQ™ ECL Substrate Kit .



Western blotting analysis using anti-Integrin alpha 5 antibody 1:5,000 and HRP-conjugated goat anti rabbit secondary antibody 1:50,000 respectively. Image was developed using FeQ™ ECL Substrate Kit .