



SunLong Biotech Co.,LTD
Tel: 0086-571- 56623320 Fax:0086-571- 56623318
E-mail:sales@sunlongbiotech.com
www.sunlongbiotech.com

[KD-Validated] Anti-Integrin Subunit Alpha 5 Rabbit Polyclonal Antibody

Cat No.: KD-10500

Aliases:

ITGA5; Integrin Subunit Alpha 5; CD49e; FNRA; Integrin, Alpha 5 (Fibronectin Receptor, Alpha Polypeptide); Fibronectin Receptor, Alpha Polypeptide; Fibronectin Receptor Subunit Alpha; CD49 Antigen-Like Family Member E; Integrin Alpha-5; Integrin Alpha-F; VLA-5; Very Late Activation Protein 5, Alpha Subunit; Fibronectin Receptor, Alpha Subunit; ITGA5/SLC9B1 Fusion; CD49e Antigen; VLA5A

Background:

UniProt Entry: [P08648](#);NCBI Gene Entry: [3678](#)

Application Information

Molecular Weight: Predicted, 115 kDa, observed, 18 kDa Clonality: Rabbit polyclonal antibody Clone ID: N/A Species Reactivity: Human Applications Tested: Western Blotting (WB)

Immunogen

A synthesized peptide derived from human CD49e LC

Isotype

Rabbit IgG

Storage Buffer

Supplied in PBS (pH 7.4) containing 50% glycerol, and 0.02% sodium azide.

Storage

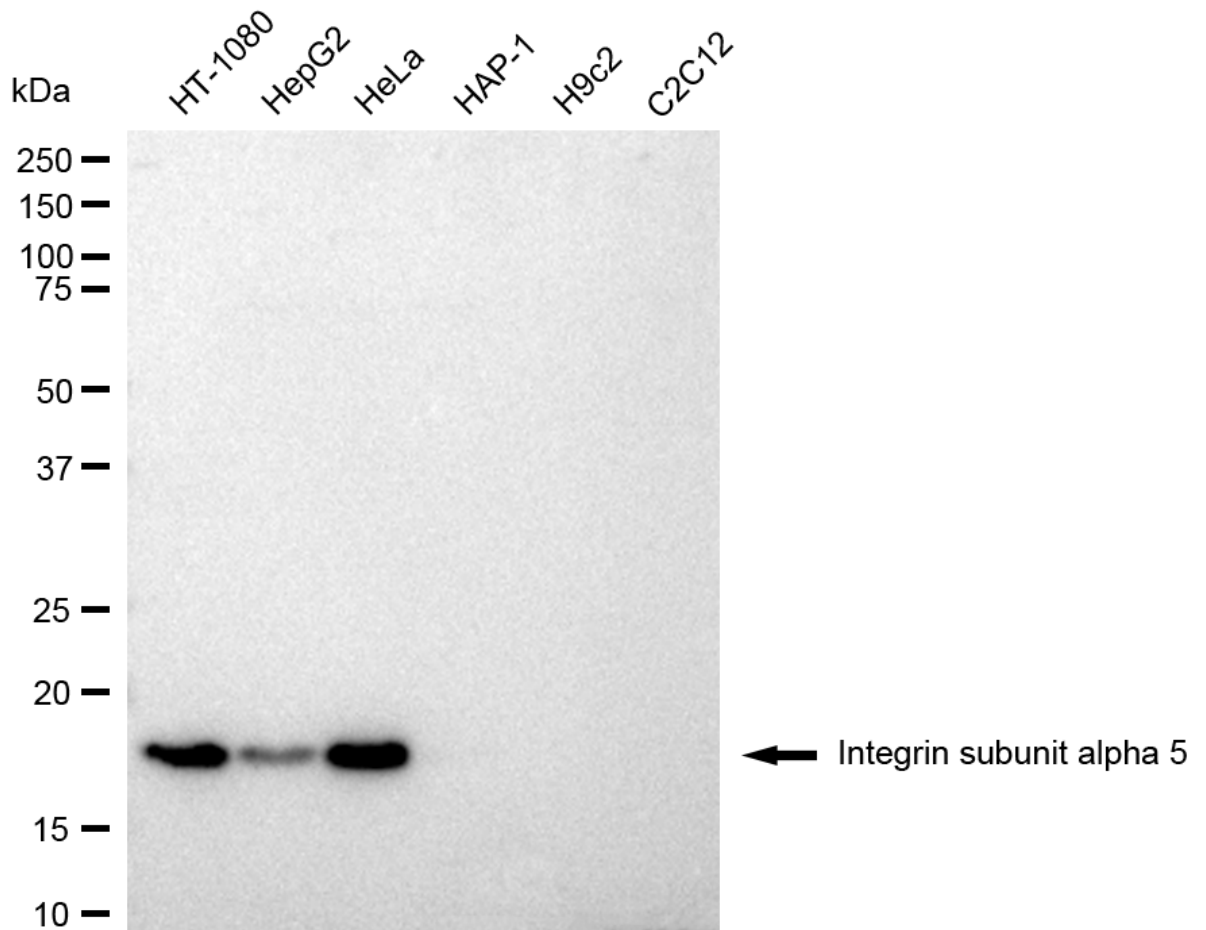
Store at -20 °C for one year.

Recommended Dilutions

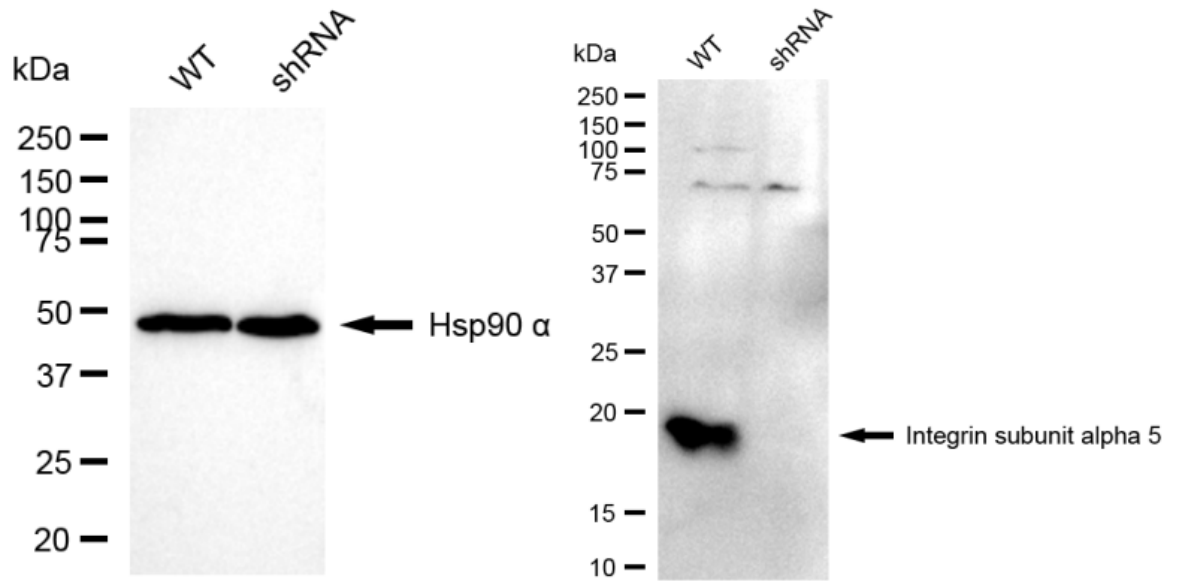
Western Blotting (WB): 1:2,500-1:5,000

Protocols

For general and specific antibody protocols please visit our website. Read all instructions before using this product.



Western blotting analysis using anti-Integrin subunit alpha 5 antibody 1:5,000 and HRP-conjugated goat anti-rabbit secondary antibody 1:20,000 respectively. Image was developed using FeQ™ ECL Substrate Kit .



Western blotting analysis using anti-Integrin subunit alpha 5 antibody 1:5,000 and HRP-conjugated goat anti-rabbit secondary antibody 1:20,000 respectively. Image was developed using FeQ™ ECL Substrate Kit .