



SunLong Biotech Co.,LTD
Tel: 0086-571- 56623320 Fax:0086-571- 56623318
E-mail:sales@sunlongbiotech.com
www.sunlongbiotech.com

[KD-Validated] Anti-ISG15 Rabbit Monoclonal Antibody

Cat No.: KD-10499

Aliases:

ISG15; ISG15 Ubiquitin Like Modifier; UCRP; IFI15; G1P2; Interferon, Alpha-Inducible Protein (Clone IFI-15K); Ubiquitin Cross-Reactive Protein; Ubiquitin-Like Protein; ISG15; HUICRP; IP17; Interferon-Induced 17-KDa/15-KDa Protein; Interferon-Stimulated Protein, 15 KDa; Interferon-Induced 15 KDa Protein; Interferon-Induced 17 KDa Protein; IMD38

Background:

UniProt Entry: [P05161](#);NCBI Gene Entry: [9636](#)

Application Information

Molecular Weight: Predicted, 18 kDa, observed, 15 kDa Clonality: Rabbit monoclonal antibody Clone ID: 23GB6460 Species Reactivity: Human Applications Used: Western Blotting (WB), Immunocytochemistry (IC)

Immunogen

A synthesized peptide derived from human ISG15

Isotype

Rabbit IgG

Storage Buffer

Supplied in PBS (pH 7.4) containing 50% glycerol, and 0.02% sodium azide.

Storage

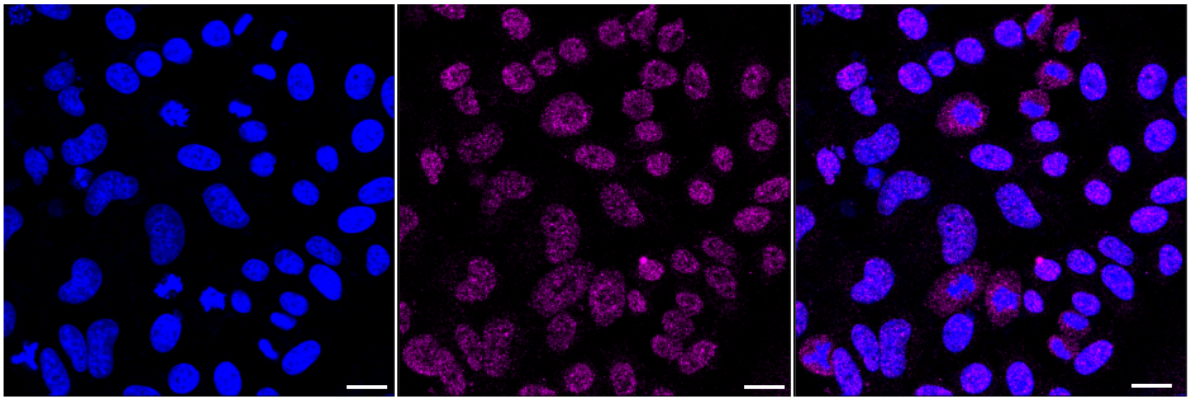
Store at -20 °C for one year.

Recommended Dilutions

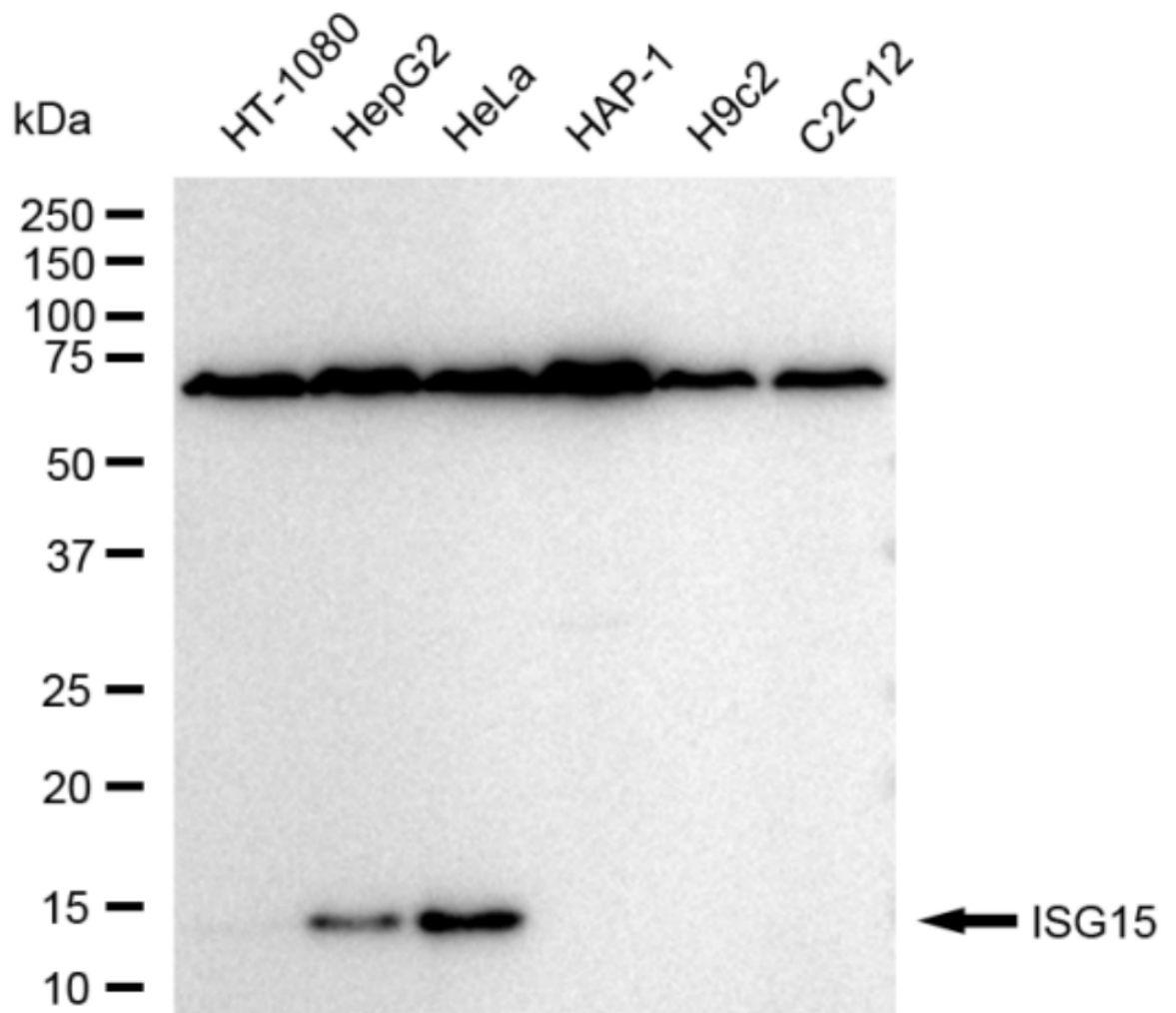
Western Blotting (WB): 1:1,000-1:5,000 Immunocytochemistry (IC): 1:1,000

Protocols

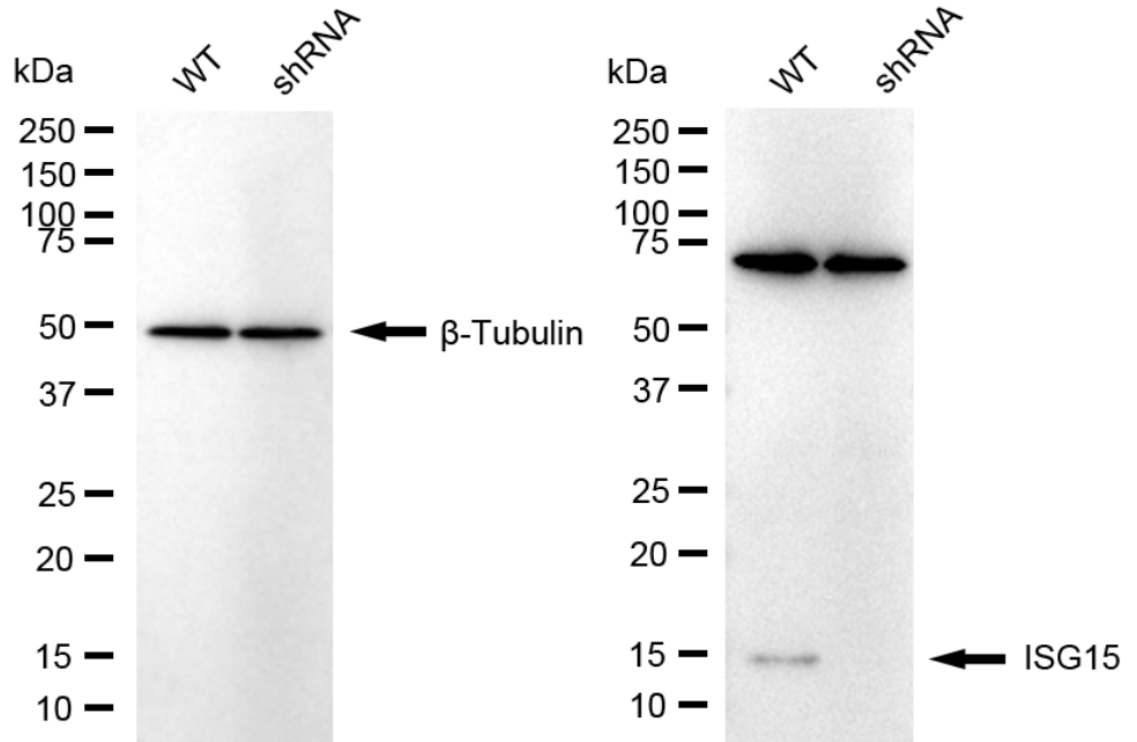
For general and specific antibody protocols please visit our website. Read all instructions before using this product.



Immunocytochemical staining of HepG2 cells with anti-ISG15 antibody 1:1,000. Nuclei were stained blue with DAPI; ISG15 was stained magenta with Alexa Fluor® 647. Images were taken using Leica stellaris 5. Protein abundance based on laser Intensity and smart gain: Medium. Scale bar: 20 µm.



Western blotting analysis using anti-ISG15 antibody 1:5,000 and HRP-conjugated goat anti-rabbit secondary antibody 1:20,000 respectively. Image was developed using FeQ™ ECL Substrate Kit .



Western blotting analysis using anti-ISG15 antibody 1:5,000 and HRP-conjugated goat anti-rabbit secondary antibody 1:20,000 respectively. Image was developed using FeQ™ ECL Substrate Kit .