



SunLong Biotech Co.,LTD  
Tel: 0086-571- 56623320 Fax:0086-571- 56623318  
E-mail:sales@sunlongbiotech.com  
www.sunlongbiotech.com

## **[KD-Validated] Anti-Insulin receptor Rabbit Monoclonal Antibody**

Cat No.: KD-10492

### **Aliases:**

INSR; Insulin Receptor; CD220; EC 2.7.10.1; IR; CD220 Antigen; EC 2.7.10; HHF5

### **Background:**

UniProt Entry: [P06213](#);NCBI Gene Entry: [3643](#)

### **Application Information**

Molecular Weight: Predicted, 156 kDa, observed, 95 kDa Clonality: Rabbit monoclonal antibody Clone ID: 23GB2050 Species Reactivity: Human, Mouse, Rat Applications Tested: Western Blotting (WB), Flow Cytometry (FCM)

### **Immunogen**

A synthesized peptide derived from human Insulin Receptor

### **Isotype**

Rabbit IgG

### **Storage Buffer**

Supplied in PBS (pH 7.4) containing 50% glycerol, and 0.02% sodium azide.

### **Storage**

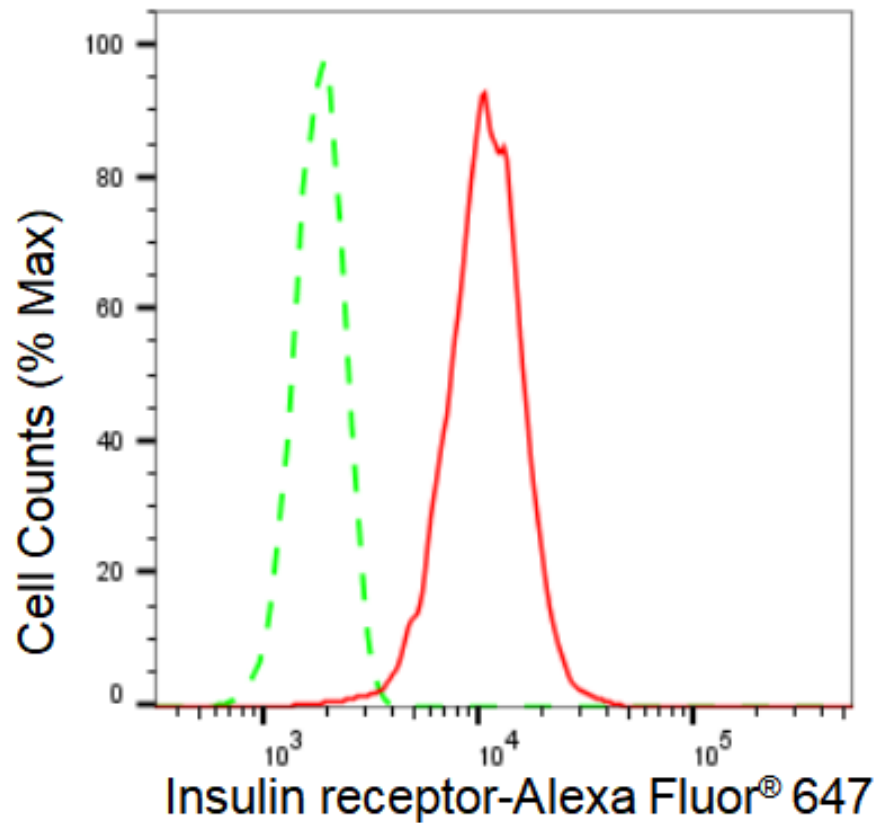
Store at -20 °C for one year.

#### Recommended Dilutions

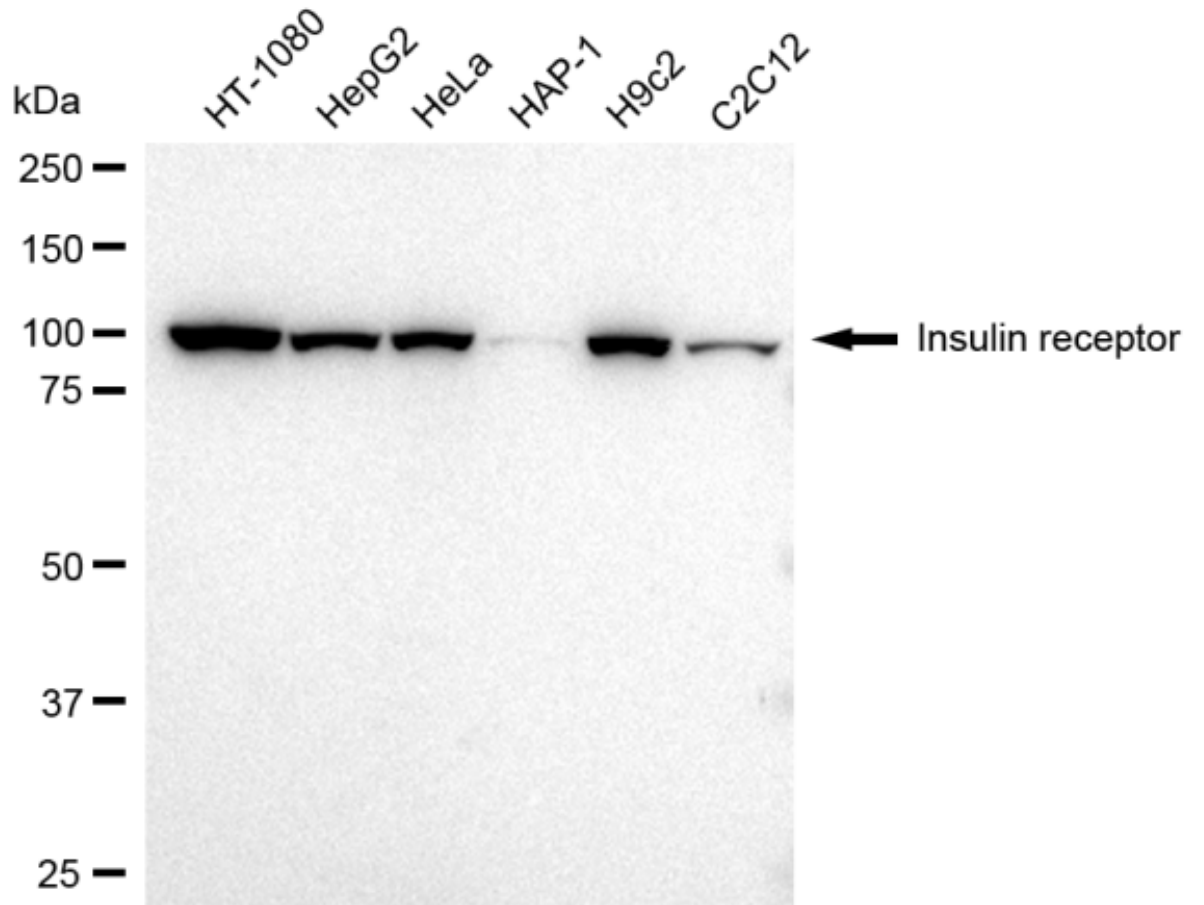
Western Blotting (WB): 1:1,000-1:5,000 Flow Cytometry (FCM): 1:2,000

#### Protocols

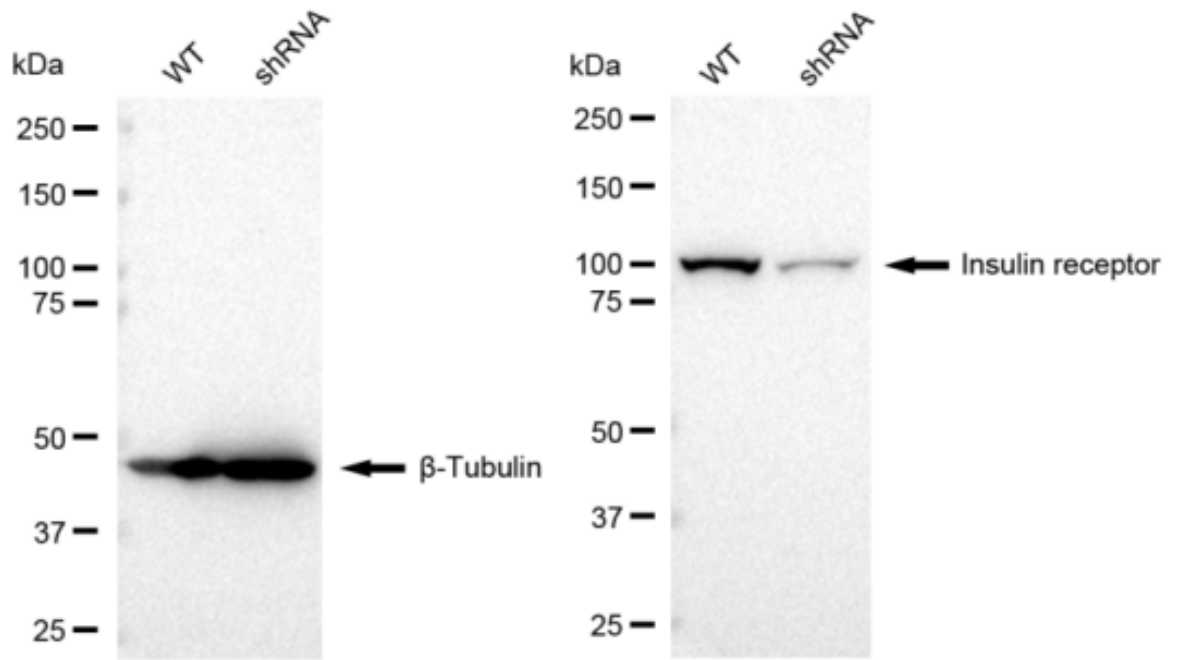
For general and specific antibody protocols please visit our website. Read all instructions before using this product.



Flow cytometric analysis of Insulin receptor expression in HT-1080 cells using Insulin receptor antibody 1:2,000. Green, isotype control; red, Insulin receptor.



Western blotting analysis using anti-Insulin receptor antibody 1:5,000 and HRP-conjugated goat anti-rabbit secondary antibody 1:20,000 respectively. Image was developed using FeQ™ ECL Substrate Kit .



Western blotting analysis using anti-Insulin receptor antibody 1:5,000 and HRP-conjugated goat anti-rabbit secondary antibody 1:20,000 respectively. Image was developed using FeQ™ ECL Substrate Kit .