



SunLong Biotech Co.,LTD
Tel: 0086-571- 56623320 Fax:0086-571- 56623318
E-mail:sales@sunlongbiotech.com
www.sunlongbiotech.com

[KD-Validated] Anti-Inhibin subunit beta B Rabbit Monoclonal Antibody

Cat No.: KD-10491

Aliases:

INHBB; Inhibin Subunit Beta B; Inhibin Beta B Chain; Activin Beta-B Chain; Inhibin, Beta B (Activin AB Beta Polypeptide); Activin AB Beta Polypeptide; Inhibin Beta B Subunit; Inhibin, Beta B; Inhibin, Beta-2

Background:

UniProt Entry: [P09529](#);NCBI Gene Entry: [3625](#)

Application Information

Molecular Weight: Predicted, 45 kDa, observed, 52 kDa Clonality: Rabbit monoclonal antibody Clone ID: 24GB6100 Species Reaceivity: Human, Mouse Applicseions Tsted: Western Blotting (WB), Flow Cytometry (FCM), Immunocytochemistry (IC)

Immunogen

A synthesized peptide derived from human Inhibin beta B

Isotype

Rabbit IgG

Storage Buffer

Supplied in PBS (pH 7.4) containing 50% glycerol, and 0.02% sodium azide.

Storage

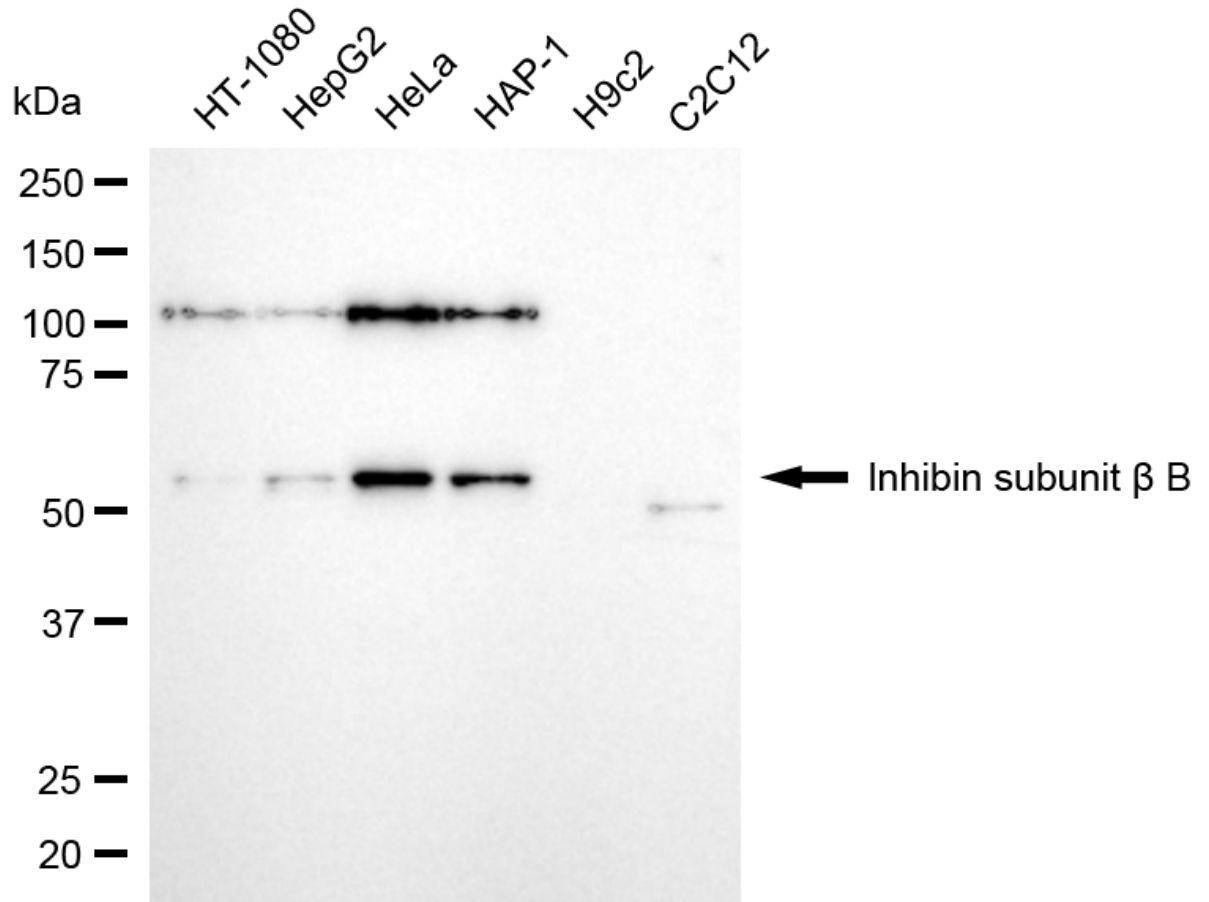
Store at -20 °C for one year.

Recommended Dilutions

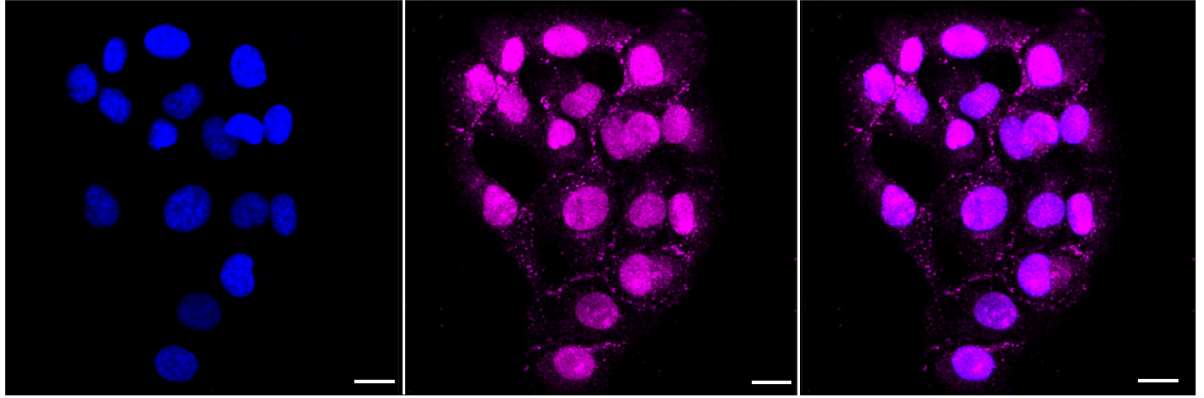
Western Blotting (WB): 1:500-1:2,500 Flow Cytometry (FCM): 1:2,000
Immunocytochemistry (IC): 1:1,000

Protocols

For general and specific antibody protocols please visit our website. Read all instructions before using this product.



Western blotting analysis using anti-inhibin subunit beta B antibody 1:2,500 and HRP-conjugated goat anti-rabbit secondary antibody 1:20,000 respectively. Image was developed using NaQ™ ECL Substrate Kit 1:5,000 and HRP-conjugated goat anti-rabbit secondary antibody 1:20,000 respectively. Image was developed using NaQ™ ECL Substrate Kit 1:2,000. Green, isotype control; red, inhibin subunit beta B.



Immunocytochemical staining of HT-1080 cells with anti-inhibin subunit beta B antibody 1:1,000. Nuclei were stained blue with DAPI; Inhibin subunit beta B was stained magenta with Alexa Fluor® 647. Images were taken using Leica stellaris 5. Protein abundance based on laser Intensity and smart gain: High. Scale bar: 20 μ m.