



SunLong Biotech Co.,LTD  
Tel: 0086-571- 56623320 Fax:0086-571- 56623318  
E-mail:sales@sunlongbiotech.com  
www.sunlongbiotech.com

## [KD-Validated] Anti-IMPDH2 Rabbit Monoclonal Antibody

Cat No.: KD-10490

### Aliases:

IMPDH2; Inosine Monophosphate Dehydrogenase 2; IMP (Inosine 5'-Monophosphate) Dehydrogenase 2; Inosine-5'-Monophosphate Dehydrogenase Type II; Inosine-5'-Monophosphate Dehydrogenase 2; IMP Dehydrogenase II; EC 1.1.1.205; IMPDH-II; IMPDH 2; IMPD 2; IMPD2; IMP (Inosine Monophosphate) Dehydrogenase 2; Inosine Monophosphate Dehydrogenase Type II; Epididymis Secretory Sperm Binding Protein; Inosine 5' Phosphate Dehydrogenase 2; IMP Dehydrogenase 2; IMP Oxireductase 2

### Background:

UniProt Entry: [P12268](#);NCBI Gene Entry: [3615](#)

### Application Information

Molecular Weight: Predicted, 56 kDa, observed, 56 kDa Clonality: Rabbit monoclonal antibody Clone ID: 24GB6135 Species Reactivity: Human, Mouse, Rat Applications Tested: Western Blotting (WB), Flow Cytometry (FCM), Immunocytochemistry (IC)

### Immunogen

A synthesized peptide derived from human IMPDH2

### Isotype

Rabbit IgG

### Storage Buffer

Supplied in PBS (pH 7.4) containing 50% glycerol, and 0.02% sodium azide.

### Storage

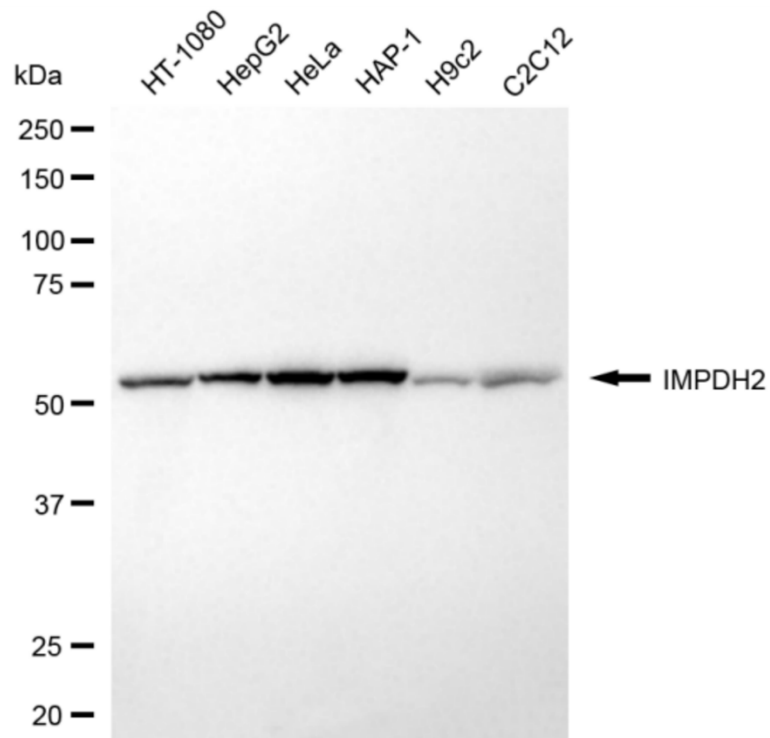
Store at -20 °C for one year.

### Recommended Dilutions

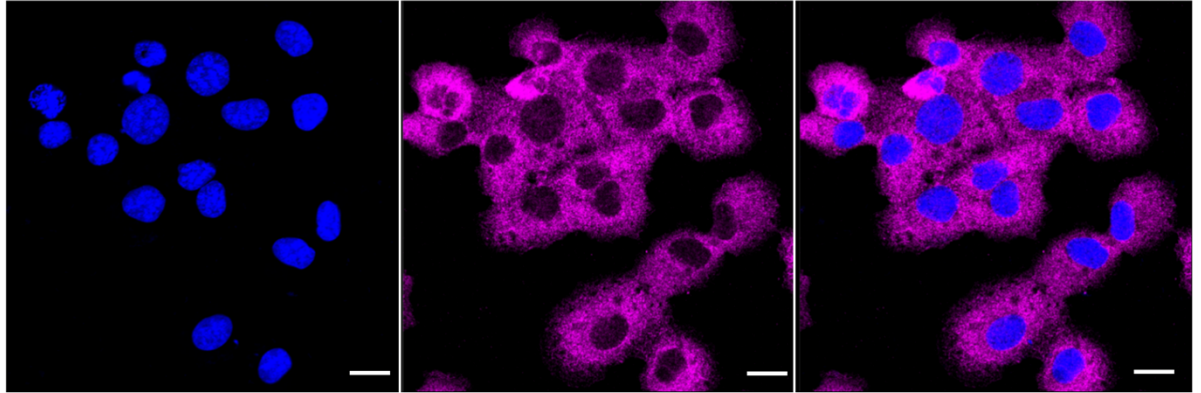
Western Blotting (WB): 1:1,000-1:5,000 Flow Cytometry (FCM): 1:2,000  
Immunocytochemistry (IC): 1:1,000

### Protocols

For general and specific antibody protocols please visit our website. Read all instructions before using this product.



Western blotting analysis using anti-IMPDH2 antibody 1:5,000 and HRP-conjugated goat anti-rabbit secondary antibody 1:20,000 respectively. Image was developed using NaQ™ ECL Substrate Kit 1:5,000 and HRP-conjugated goat anti-rabbit secondary antibody 1:20,000 respectively. Image was developed using NaQ™ ECL Substrate Kit 1:2,000. Green, isotype control; red, IMPDH2.



Immunocytochemical staining of HT-1080 cells with anti-IMPDH2 antibody 1:1,000. Nuclei were stained blue with DAPI; IMPDH2 was stained magenta with Alexa Fluor® 647. Images were taken using Leica stellaris 5. Protein abundance based on laser Intensity and smart gain: Medium. Scale bar: 20  $\mu$ m.