



SunLong Biotech Co.,LTD
Tel: 0086-571- 56623320 Fax:0086-571- 56623318
E-mail:sales@sunlongbiotech.com
www.sunlongbiotech.com

[KD-Validated] Anti-IL13 receptor alpha 1 Rabbit Monoclonal Antibody

Cat No.: KD-10489

Aliases:

IL13RA1; Interleukin 13 Receptor Subunit Alpha 1; CD213a1 Antigen; IL-13Ra; CD213a1; NR4; Interleukin-13 Receptor Subunit Alpha-1; Interleukin 13 Receptor, Alpha 1; IL-13 Receptor Subunit Alpha-1; IL13 Receptor Alpha-1 Chain; Cancer/Testis Antigen 19; IL-13R Subunit Alpha-1; CT19; IL-13R-Alpha-1; IL-13RA1; IL13RA; IL13R

Background:

UniProt Entry: [P78552](#);NCBI Gene Entry: [3597](#)

Application Information

Molecular Weight: Predicted, 49 kDa, observed, 50 kDa Clonality: Rabbit monoclonal antibody Clone ID: 23GB6655 Species Reactivity: Human Applications Tested: Western Blotting (WB), Flow Cytometry (FCM), Immunocytochemistry (IC)

Immunogen

A synthesized peptide derived from human IL13 receptor alpha 1

Isotype

Rabbit IgG

Storage Buffer

Supplied in PBS (pH 7.4) containing 50% glycerol, and 0.02% sodium azide.

Storage

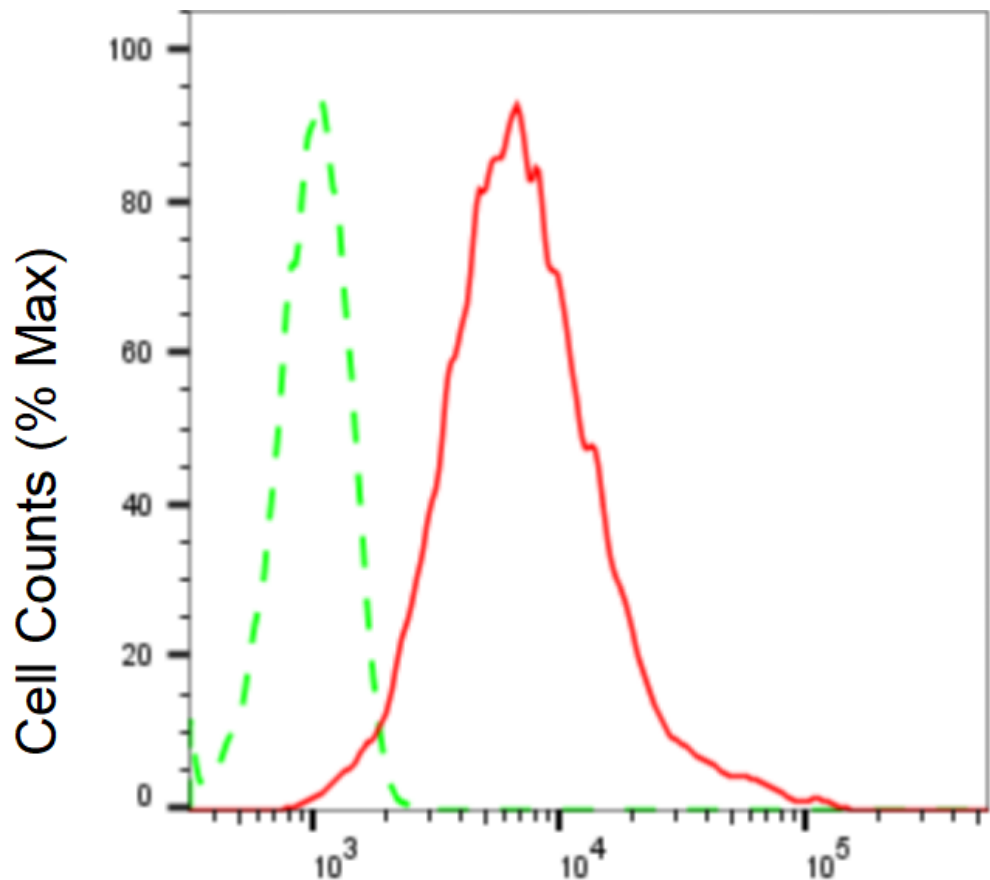
Store at -20 °C for one year.

Recommended Dilutions

Western Blotting (WB): 1:1,000-1:5,000 Flow Cytometry (FCM): 1:2,000
Immunocytochemistry (IC): 1:1,000

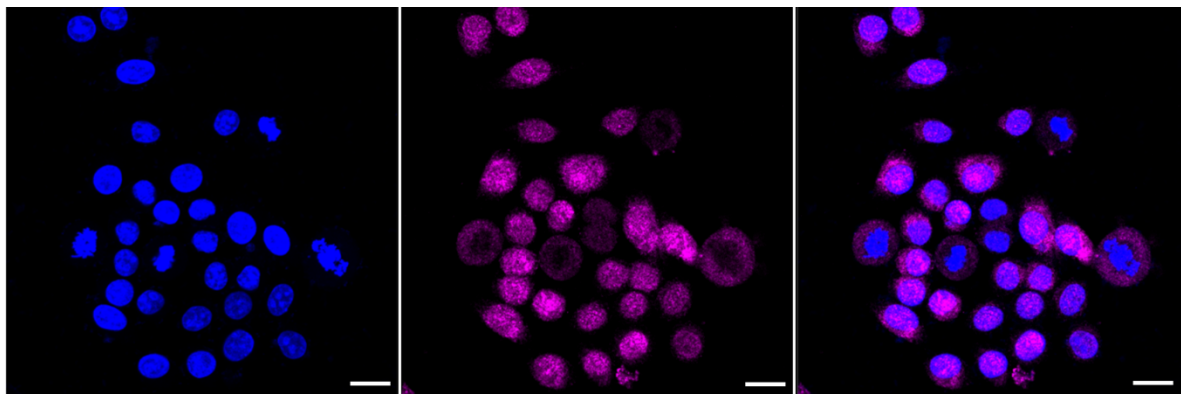
Protocols

For general and specific antibody protocols please visit our website. Read all instructions before using this product.

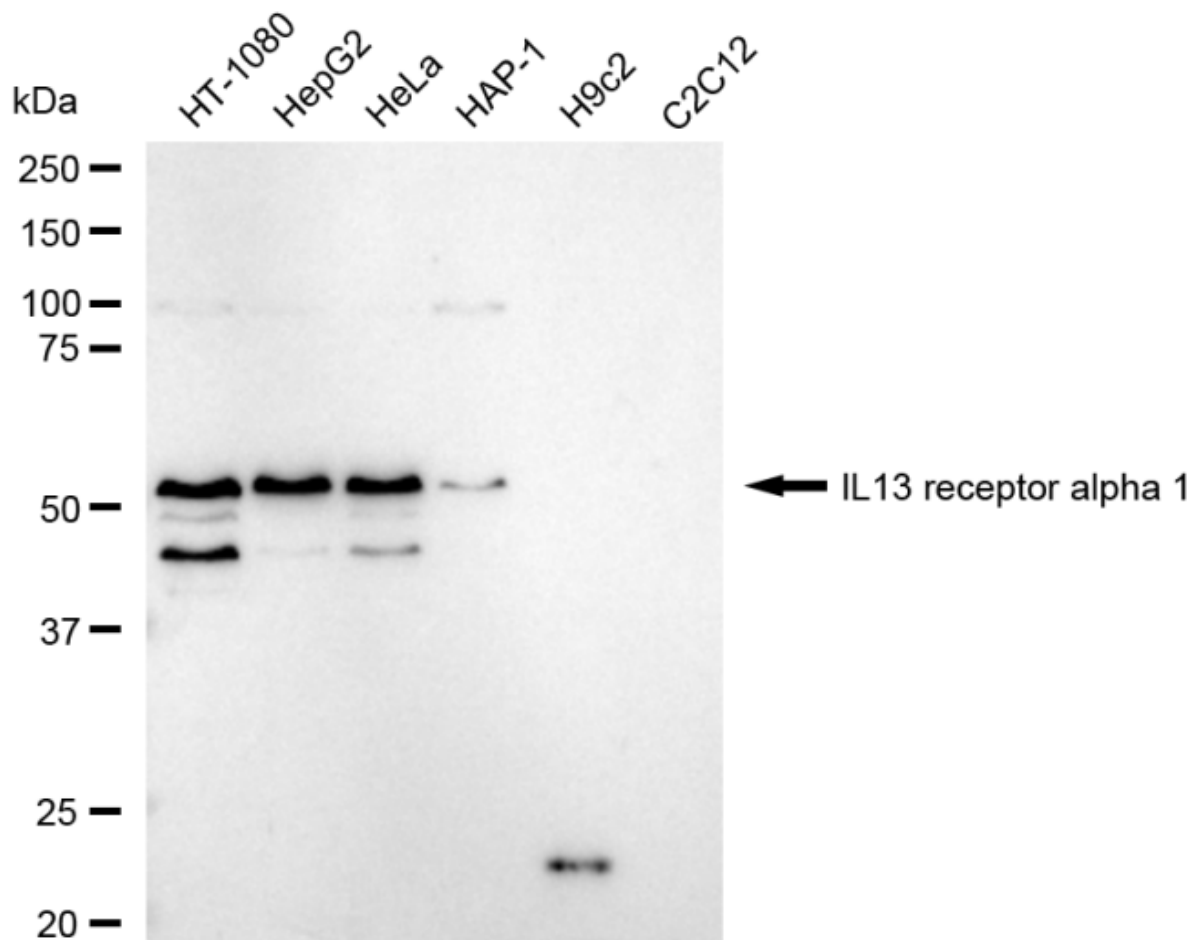


IL13 receptor alpha 1-Alexa Fluor® 647

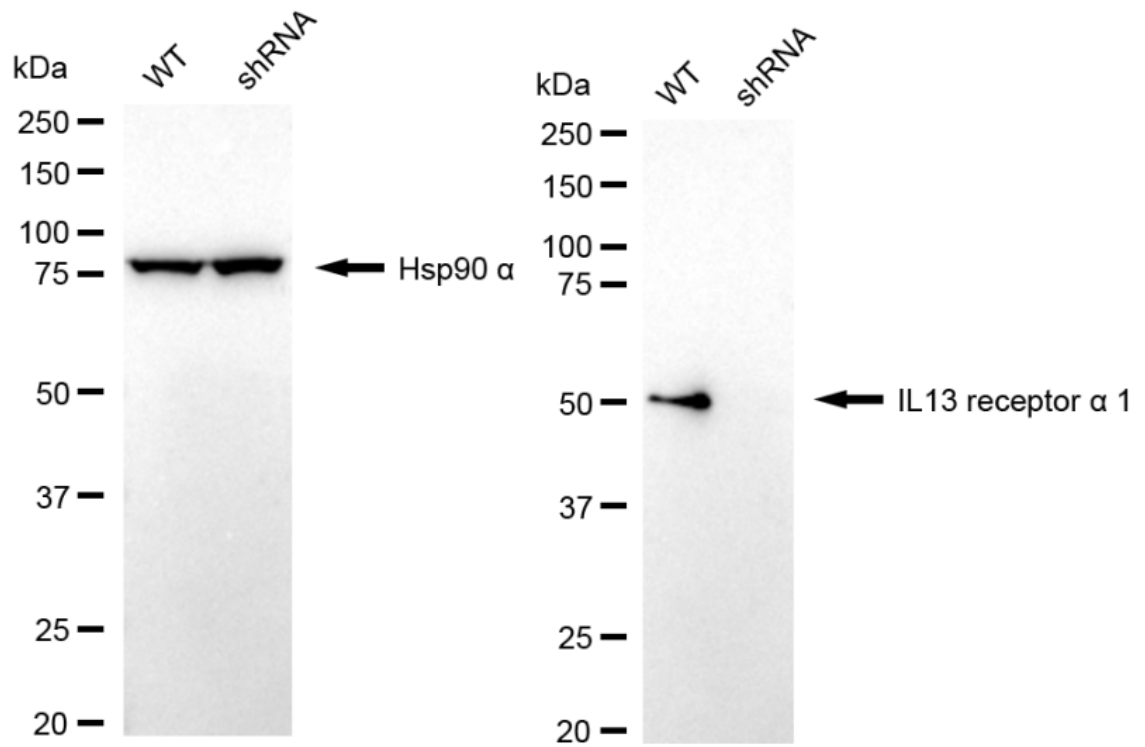
Flow cytometric analysis of IL13 receptor alpha 1 expression in HepG2 cells using IL13 receptor alpha 1 antibody 1:2,000. Green, isotype control; red, IL13 receptor alpha 1.



Immunocytochemical staining of HeLa cells with anti-IL13 receptor alpha 1 antibody 1:1,000. Nuclei were stained blue with DAPI; IL13 receptor alpha 1 was stained magenta with Alexa Fluor® 647. Images were taken using Leica stellaris 5. Protein abundance based on laser Intensity and smart gain: Medium. Scale bar: 20 μ m.



Western blotting analysis using anti-IL13 receptor alpha 1 antibody 1:5,000 and HRP-conjugated goat anti-rabbit secondary antibody 1:20,000 respectively. Image was developed using FeQ™ ECL Substrate Kit .



Western blotting analysis using anti-IL13 receptor α 1 antibody 1:5,000 and HRP-conjugated goat anti-rabbit secondary antibody 1:20,000 respectively. Image was developed using NaQ™ ECL Substrate Kit .