



SunLong Biotech Co.,LTD
Tel: 0086-571- 56623320 Fax:0086-571- 56623318
E-mail:sales@sunlongbiotech.com
www.sunlongbiotech.com

[KD-Validated] Anti-IGFBP7 Rabbit Monoclonal Antibody

Cat No.: KD-10488

Aliases:

IGFBP7; Insulin Like Growth Factor Binding Protein 7; IGFBP-7; MAC25; PSF; FSTL2; Insulin-Like Growth Factor-Binding Protein 7; Prostacyclin-Stimulating Factor; Tumor-Derived Adhesion Factor; PGI2-Stimulating Factor; IGF-Binding Protein 7; IGFBP-RP1; IBP-7; TAF; Insulin-Like Growth Factor Binding Protein 7; MAC25 Protein; Angiomodulin; IGFBP-7v; IGFBPRP1; RAMSVPS; AGM

Background:

UniProt Entry: [Q16270](#);NCBI Gene Entry: [3490](#)

Application Information

Molecular Weight: Predicted, 29 kDa, observed, 29 kDa Clonality: Rabbit monoclonal antibody Clone ID: 24GB4910 Species Reactivity: Human Applications Used: Western Blotting (WB), Flow Cytometry (FCM)

Immunogen

A synthesized peptide derived from human IGFBP7

Isotype

Rabbit IgG

Storage Buffer

Supplied in PBS (pH 7.4) containing 50% glycerol, and 0.02% sodium azide.

Storage

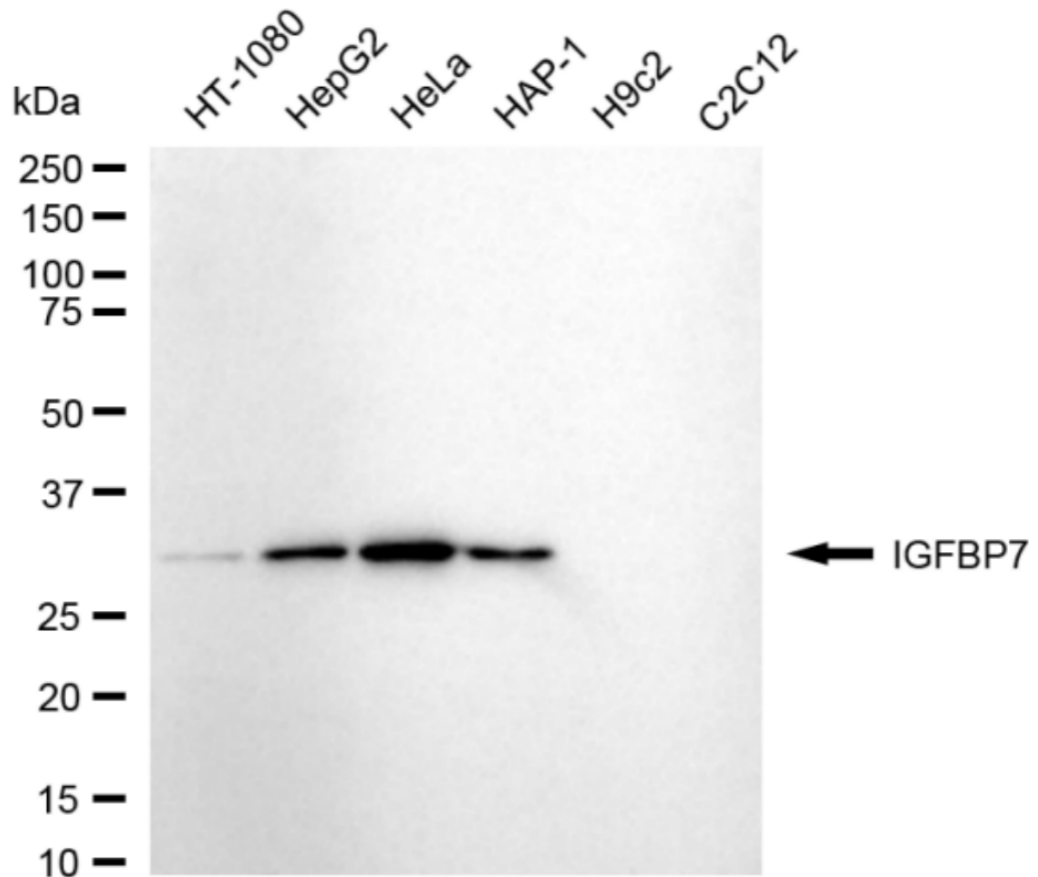
Store at -20 °C for one year.

Recommended Dilutions

Western Blotting (WB): 1:1,000-1:5,000 Flow Cytometry (FCM): 1:2,000

Protocols

For general and specific antibody protocols please visit our website. Read all instructions before using this product.



Western blotting analysis using anti-IGFBP7 antibody 1:5,000 and HRP-conjugated goat anti-rabbit secondary antibody 1:20,000 respectively. Image was developed using NaQ™ ECL Substrate Kit 1:5,000 and HRP-conjugated goat anti-rabbit secondary antibody 1:20,000 respectively. Image was developed using NaQ™ ECL Substrate Kit 1:2,000. Green, isotype control; red, IGFBP7.