



SunLong Biotech Co.,LTD
Tel: 0086-571- 56623320 Fax:0086-571- 56623318
E-mail:sales@sunlongbiotech.com
www.sunlongbiotech.com

[KD-Validated] Anti-IGF2BP3 Rabbit Monoclonal Antibody

Cat No.: KD-10487

Aliases:

IGF2BP3; Insulin Like Growth Factor 2 mRNA Binding Protein 3; IMP-3; IMP3; CT98; Insulin-Like Growth Factor 2 mRNA-Binding Protein 3; IGF-II mRNA-Binding Protein 3; IGF2 mRNA-Binding Protein 3; Cancer/Testis Antigen 98; VICKZ Family Member 3; VICKZ3; KOC1; KH Domain Containing Protein Overexpressed In Cancer; KH Domain-Containing Protein Overexpressed In Cancer; Insulin-Like Growth Factor 2 mRNA Binding Protein 3; IGF II mRNA Binding Protein 3; HKOC; KOC

Background:

UniProt Entry: [O00425](#);NCBI Gene Entry: [10643](#)

Application Information

Molecular Weight: Predicted, 64 kDa, observed, 69 kDa Clonality: Rabbit monoclonal antibody Clone ID: 23GB6345 Species Reactivity: Human Applications Used: Western Blotting (WB), Flow Cytometry (FCM), Immunocytochemistry (IC)

Immunogen

A synthesized peptide derived from human IMP3

Isotype

Rabbit IgG

Storage Buffer

Supplied in PBS (pH 7.4) containing 50% glycerol, and 0.02% sodium azide.

Storage

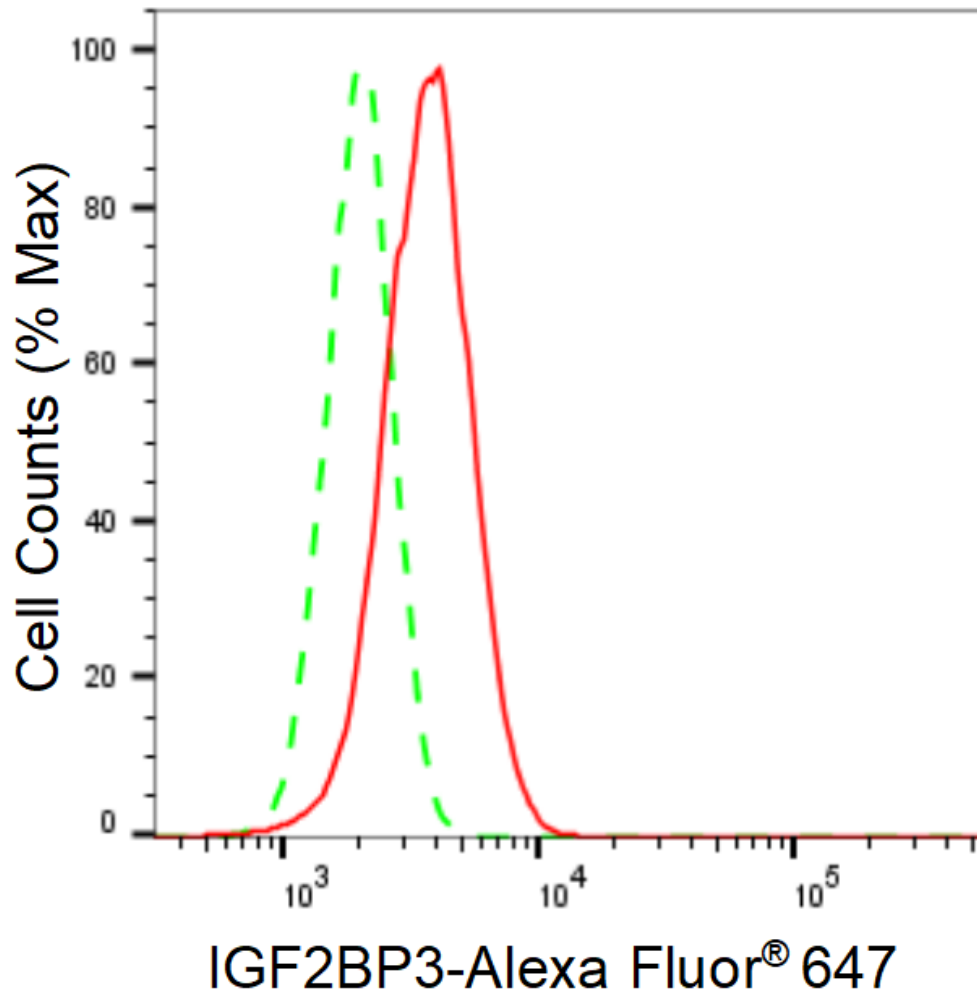
Store at -20 °C for one year.

Recommended Dilutions

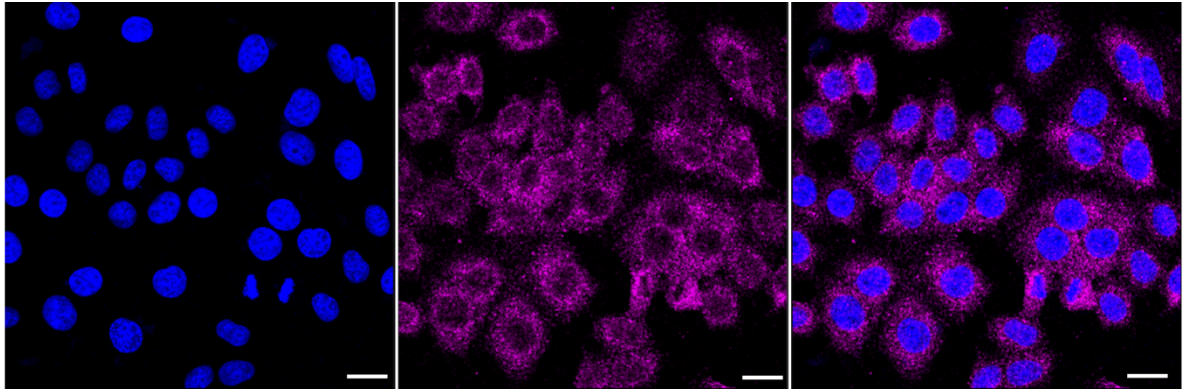
Western Blotting (WB): 1:1,000-1:5,000 Flow Cytometry (FCM): 1:2,000
Immunocytochemistry (IC): 1:1,000

Protocols

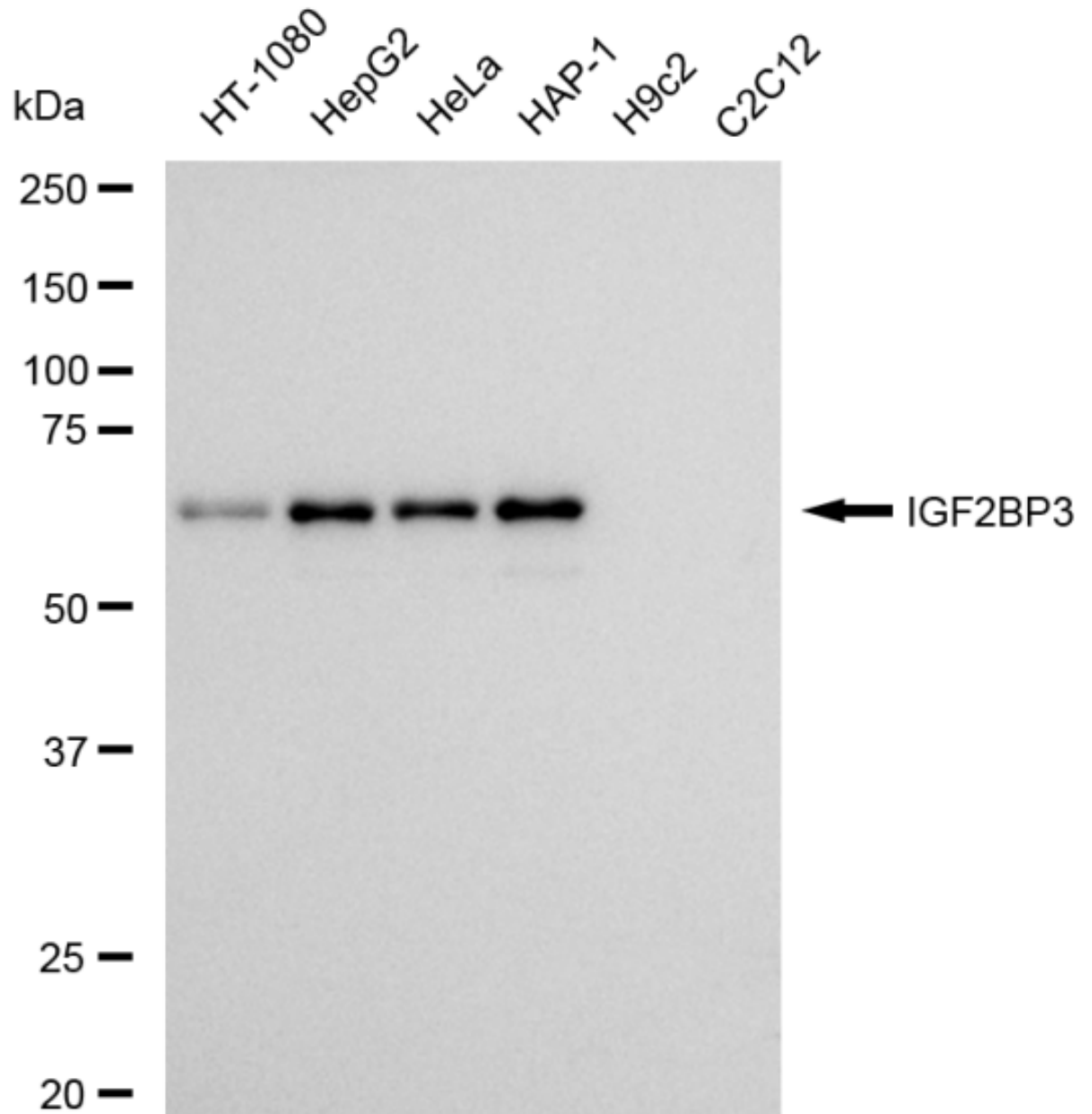
For general and specific antibody protocols please visit our website. Read all instructions before using this product.



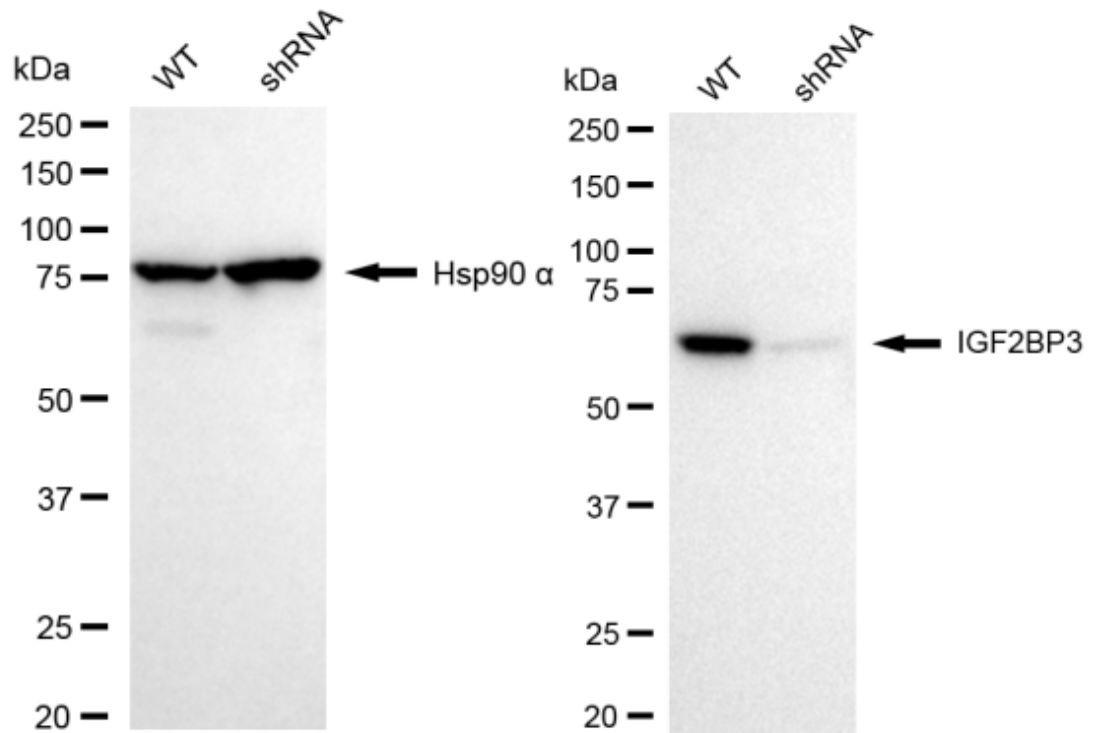
Flow cytometric analysis of IGF2BP3 expression in HepG2 cells using IGF2BP3 antibody 1:2,000. Green, isotype control; red, IGF2BP3.



Immunocytochemical staining of HepG2 cells with anti-IGF2BP3 antibody 1:1,000. Nuclei were stained blue with DAPI; IGF2BP3 was stained magenta with Alexa Fluor® 647. Images were taken using Leica stellaris 5. Protein abundance based on laser Intensity and smart gain: Medium. Scale bar: 20 μm .



Western blotting analysis using anti-IGF2BP3 antibody 1:5,000 and HRP-conjugated goat anti-rabbit secondary antibody 1:20,000 respectively. Image was developed using FeQ™ ECL Substrate Kit .



Western blotting analysis using anti-IGF2BP3 antibody 1:5,000 and HRP-conjugated goat anti-rabbit secondary antibody 1:20,000 respectively. Image was developed using NaQ™ ECL Substrate Kit .