



SunLong Biotech Co.,LTD
Tel: 0086-571- 56623320 Fax:0086-571- 56623318
E-mail:sales@sunlongbiotech.com
www.sunlongbiotech.com

[KD-Validated] Anti-Intraflagellar transport 88 Rabbit Monoclonal Antibody

Cat No.: KD-10486

Aliases:

IFT88; Intraflagellar Transport 88; D13S1056E; TG737; TTC10; Recessive Polycystic Kidney Disease Protein Tg737 Homolog; Intraflagellar Transport Protein 88 Homolog; Tetratricopeptide Repeat Protein 10; Tetratricopeptide Repeat Domain 10; TPR Repeat Protein 10; Polaris Homolog; MGC26259; HTg737; Probe HTg737 (Polycystic Kidney Disease, Autosomal Recessive); Intraflagellar Transport 88 Homolog (Chlamydomonas); Intraflagellar Transport 88 Homolog; Testicular Tissue Protein Li 93; HTG737; Tg737; DAF19

Background:

UniProt Entry: [Q13099](#);NCBI Gene Entry: [8100](#)

Application Information

Molecular Weight: Predicted, 94 kDa, observed, 75 kDa Clonality: Rabbit monoclonal antibody Clone ID: 23GB4015 Species Reactivity: Human, Mouse, Rat Applications Tested: Western Blotting (WB), Flow Cytometry (FCM), Immunocytochemistry (IC)

Immunogen

A synthesized peptide derived from human IFT88

Isotype

Rabbit IgG

Storage Buffer

Supplied in PBS (pH 7.4) containing 50% glycerol, and 0.02% sodium azide.

Storage

Store at -20 °C for one year.

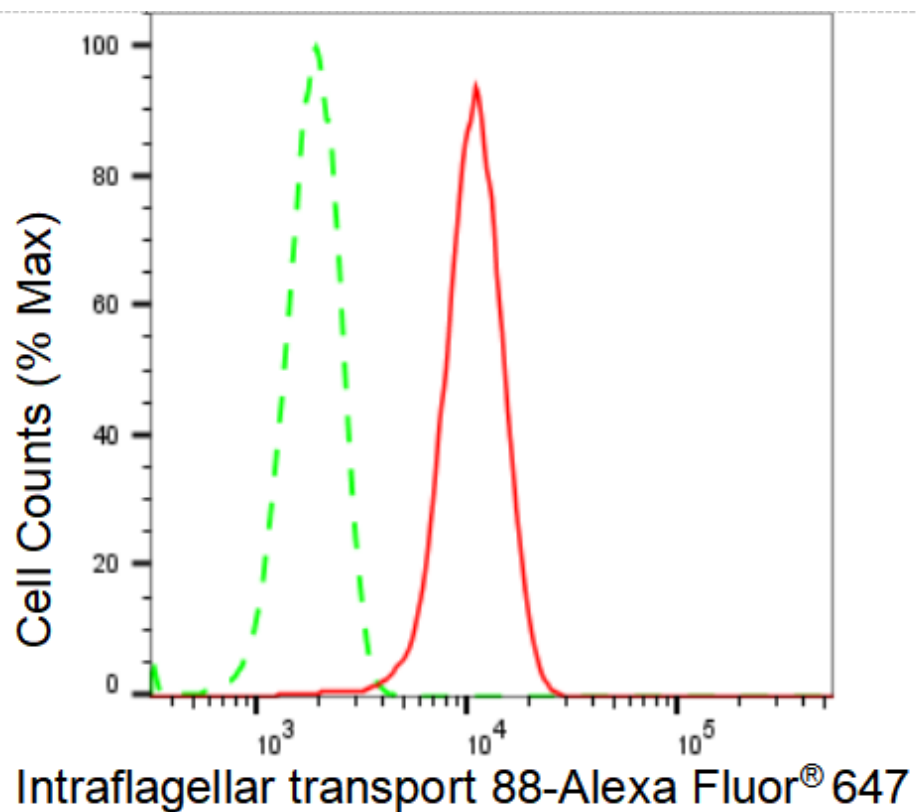
Recommended Dilutions

Western Blotting (WB): 1:1,000-1:5,000 Flow Cytometry (FCM): 1:2,000

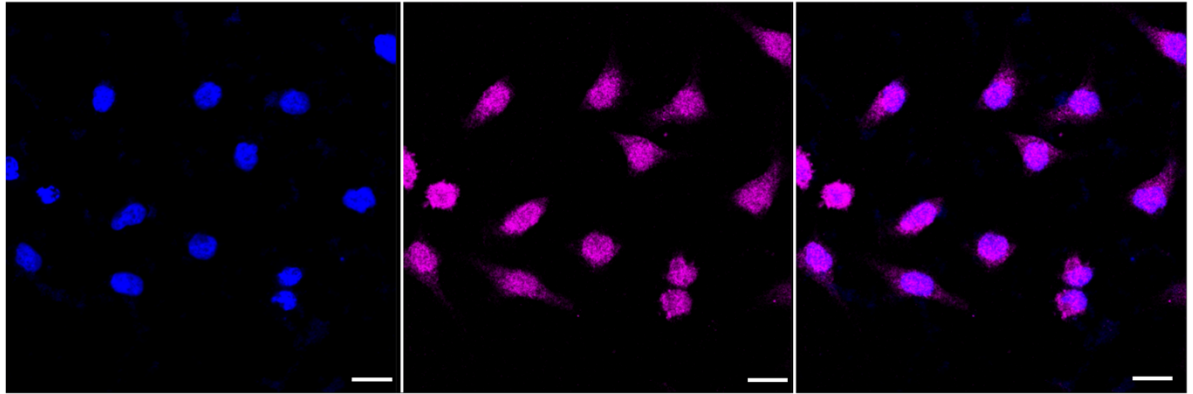
Immunocytochemistry (IC): 1:1,000

Protocols

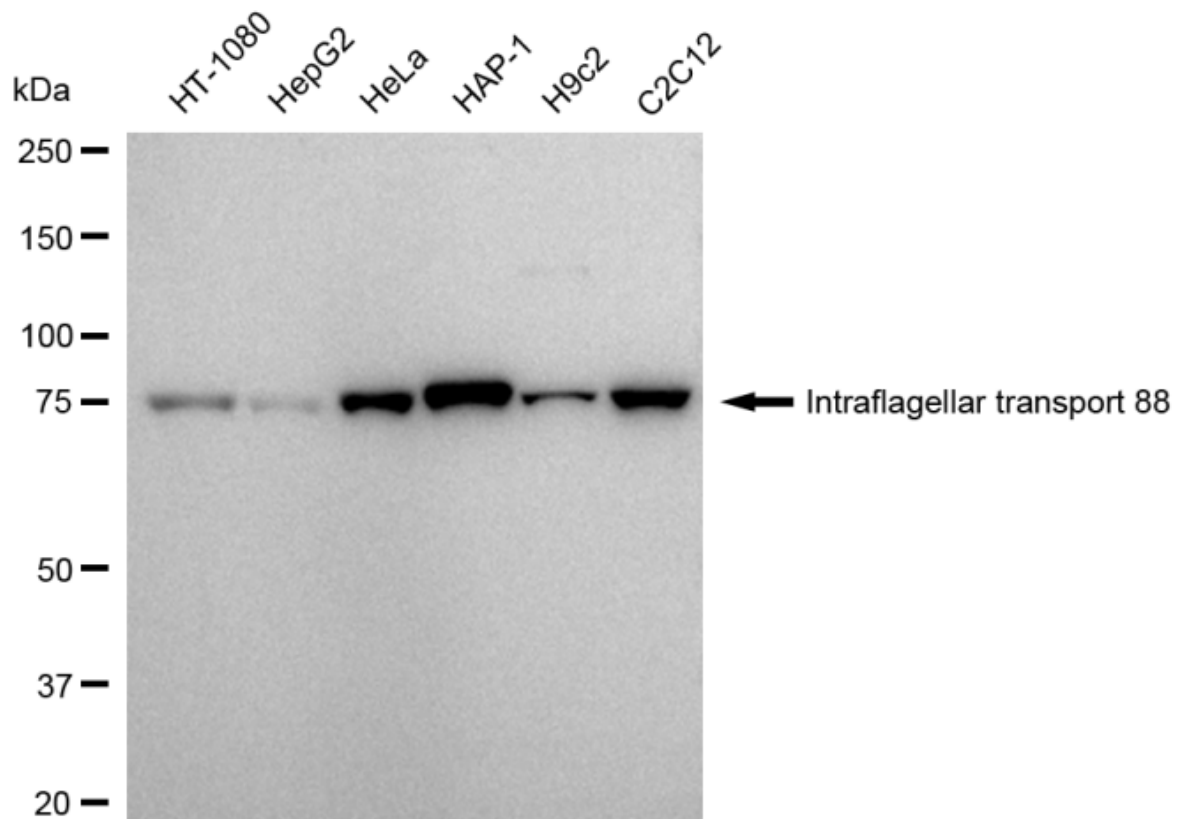
For general and specific antibody protocols please visit our website. Read all instructions before using this product.



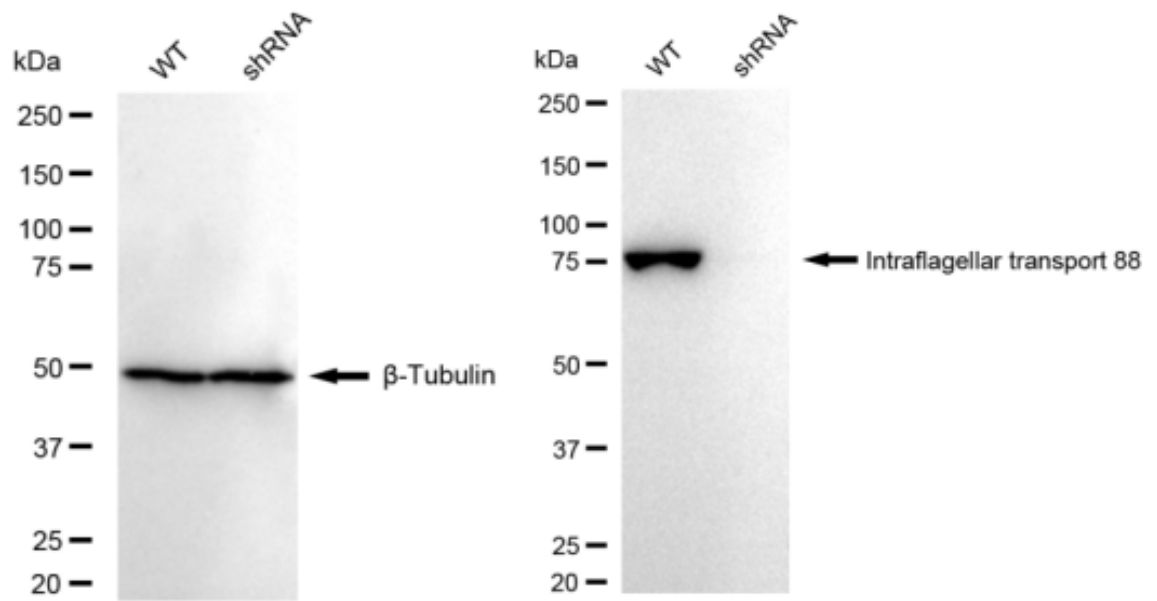
Flow cytometric analysis of Intraflagellar transport 88 expression in HeLa cells using Intraflagellar transport 88 antibody 1:2,000. Green, isotype control; red, Intraflagellar transport 88.



Immunocytochemical staining of HeLa cells with Intraflagellar transport 88 antibody 1:1,000. Nuclei were stained blue with DAPI; Intraflagellar transport 88 was stained magenta with Alexa Fluor® 647. Images were taken using Leica stellaris 5. Protein abundance based on laser Intensity and smart gain: Medium. Scale bar: 20 μ m.



Western blotting analysis using anti-Intraflagellar transport 88 antibody 1:5,000 and HRP-conjugated goat anti-rabbit secondary antibody 1:20,000 respectively. Image was developed using FeQ™ ECL Substrate Kit .



Western blotting analysis using anti-Intraflagellar transport 88 antibody 1:5,000 and HRP-conjugated goat anti-rabbit secondary antibody 1:20,000 respectively. Image was developed using FeQ™ ECL Substrate Kit .